

AGENDA

*REVISED 11-10-2022

JEFFERSON COUNTY BOARD MEETING

TUESDAY NOVEMBER 15, 2022 7:00 p.m.

Jefferson County Highway Training Room
1425 Wisconsin Drive, North Entrance
Jefferson, WI 53549

[Livestream on YouTube](#)

Register in advance for this webinar:

https://us06web.zoom.us/webinar/register/WN_N2ghwZR3TQenotKF1KEwmQ

After registering, you will receive a confirmation email containing information about joining the webinar.

1. **CALL TO ORDER**
 2. **ROLL CALL BY COUNTY CLERK**
 3. **PLEDGE OF ALLEGIANCE**
 4. **CERTIFICATION OF COMPLIANCE WITH OPEN MEETINGS LAW**
 5. **APPROVAL OF THE AGENDA**
 6. **APPROVAL OF MINUTES - OCTOBER 11 AND OCTOBER 25**
 7. **COMMUNICATIONS**
 - a. Highway Committee Report - ATV-UTV Ordinance Review (Page 1)
 - b. Notice of Public Hearing – Planning and Zoning – November 17, 2022, 7:00 p.m. (Page 2)
 - c. Treasurer’s Monthly Report
 8. **ANNUAL REPORTS**
 - a. Fair Park – Amy Listle
 - b. Veterans Service – Yvonne Dueterhoeft
 - c. Zoning/Land Information – Matt Zangl
- COMMITTEE REPORTS / RESOLUTIONS / ORDINANCES**
9. **COUNTY ADMINISTRATOR**
 - a. Resolution – In Memoriam – Richard “Augie” Tietz (Page 4)
 10. **FINANCE COMMITTEE**
 - a. *Amend Recommended 2023 County Budget (w/possible addenda)
 - a. Resolution – Establishing non-countywide levies for health and library Services (Page 5)
 - b. Resolution – Establishing countywide levy and fees (Page 6)
 - c. Resolution – Amending the 2023 budget for various Jefferson County departments (w/possible addenda) (Page 8)
 11. **HIGHWAY COMMITTEE**
 - a. Resolution – Introducing resolution to vacate and discontinue a public way (Page 11)

12. HUMAN SERVICES BOARD

- a. Resolution – Authorizing state human services contracts, consortium agreements, and professional service and care provider contracts (Page 14)

13. PLANNING AND ZONING COMMITTEE

- a. Zoning Report – Approval of Petitions (Page 33)
- b. Ordinance – Amending Official Zoning Map (Page 34)
- c. Resolution – Authorizing entering into a Contract with Pictometry International Corp for Oblique and Aerial Imagery (Page 35)

14. APPOINTMENTS BY COUNTY ADMINISTRATOR (Page 37)

- a. Deborah Reinbold, ThriveED President/JCEDC Executive Director for an Indeterminate term
- b. Timothy Anhalt to the Veterans Service Commission for a three-year term ending December 8, 2025
- c. Anthony Gulig to the Bridges Library System Board for a three-year term ending December 31, 2025
- d. Richard Moulding to the Jefferson County Library Board for a three-year term ending December 31, 2025
- e. Anthony Gulig to the Jefferson County Library Board for a three-year term ending December 31, 2025
- f. Brian Henning to the Jefferson County Library Board for a three-year term ending December 31, 2025

15. PUBLIC COMMENT (General)

16. ANNOUNCEMENTS

17. ADJOURN

**NEXT COUNTY BOARD MEETINGS
DECEMBER 13, 2022 – 7:00 P.M.**

October 25, 2022

Highway Committee Report

Subject: Jefferson County All-Terrain (ATV) and Utility-Terrain Vehicle (UTV) Route Ordinance

Background: Jefferson County Board passed the ATV/UTV Ordinance on April 20, 2021. The ordinance allowed ATV/UTV vehicles to utilize Jefferson County Highways in Jefferson County within limitations stated in the ordinance. The Ordinance stated a review of the recreation and economic benefits should be completed against any possible dangers including safety and health effects. Any findings and recommendations by the Highway Committee should be forwarded to the County Board as a communication by November 30, 2022.

Review/Comments

Traffic Safety Committee Information (Highway/Sheriff's Departments) – ATV/UTV Ordinance

The Traffic Safety Commission has placed this on the agenda numerous times since the Ordinance passed on April 20, 2021. The comments from the committee were mostly about educating the public on the ordinance, and discussing how the Ordinance affected local municipalities that did not have roads open to ATV's.

The Highway Department and Sheriff's Department have discussed the Ordinance numerous times since the Ordinance passed, including input at most of the Traffic Safety Committee meetings. There have been very few issues from the Ordinance, with most of the discussion centering on the initial posting of the Ordinance and questions regarding the details of the Ordinance.

Highway Committee Review

The Highway Committee discussed the ATV/UTV Ordinance for County Highways at the October 25, 2022 Highway Committee meeting. The Committee discussed general information regarding the Ordinance including the feedback from the Traffic Safety Commission. The Committee also discussed the adoption of similar ordinances from the majority of local government (Towns, Villages, Cities) agencies in Jefferson County. The unanimous consensus of the Committee was to leave the ordinance in-place without any adjustments at this time.

Respectfully submitted,

George Jaeckel

George Jaeckel, Chairman
Jefferson County Highway Committee

NOTICE OF PUBLIC HEARING
JEFFERSON COUNTY PLANNING AND ZONING COMMITTEE

George Jaeckel, Chair; Steve Nass, Vice-Chair; Blane Poulson, Secretary; Matt Foelker, Cassie Richardson

SUBJECT: Map Amendments to the Jefferson County Zoning Ordinance and Requests for Conditional Use Permits

DATE: Thursday, November 17, 2022

TIME: 7:00 p.m. (Doors will open at 6:30)

PLACE: **JEFFERSON COUNTY HIGHWAY DEPARTMENT TRAINING ROOM, 1425 SOUTH WISCONSIN DRIVE, JEFFERSON, WI 53549**
OR Via Zoom Videoconference

PETITIONERS OR MEMBERS OF THE PUBLIC MAY ATTEND THE MEETING VIRTUALLY BY FOLLOWING THESE INSTRUCTIONS IF THEY CHOOSE NOT TO ATTEND IN PERSON:

You are invited to a Zoom meeting.
When: November 17, 2022, at 07:00 PM Central Time (US and Canada)
Meeting ID: 957 3344 0565
Passcode: Zoning
Register in advance for this meeting:
<https://zoom.us/j/95733440565?pwd=eHZRbHZXWXhlUnlKdkhtOXhoTmtNZz09>
After registering, you will receive a confirmation email containing information about joining the meeting.

1. **Call to Order**
2. **Roll Call**
3. **Certification of Compliance with Open Meetings Law**
4. **Approval of Agenda**
5. **Explanation of Public Hearing Process by Committee Chair**
6. **Public Hearing**

NOTICE IS HEREBY GIVEN that the Jefferson County Planning and Zoning Committee will conduct a public hearing on Thursday, November 17, 2022, in the **JEFFERSON COUNTY HIGHWAY DEPARTMENT TRAINING ROOM, 1425 SOUTH WISCONSIN DRIVE**, Jefferson, Wisconsin. Members of the public will be allowed to be heard regarding any petition under consideration by the Planning and Zoning Committee. **PETITIONERS, OR THEIR REPRESENTATIVES SHALL BE PRESENT EITHER IN PERSON OR VIA ZOOM.** Matters to be heard are petitions to amend the official zoning map of Jefferson County and applications for conditional use permits. A map of the properties affected may be obtained from the Zoning Department. Individual files, which include staff finding of fact, are available for viewing between the hours of 8 a.m. and 4:30 p.m., Monday through Friday, excepting holidays. If you have questions regarding these matters, please contact Zoning at 920-674-7131.

Final action on only the **rezoning amendments** will be made by the County Board of Supervisors on December 13, 2022.

Final decisions on only the **conditional uses** will be made by the Planning and Zoning Committee on November 28, 2022.

**FROM A-1, EXCLUSIVE AGRICULTURAL TO A-2, AGRICULTURAL & RURAL BUSINESS WITH
CONDITIONAL USE**

R4445A-22 & CU2072 – Aztalan Cycle Club Inc: Rezone PIN 002-0714-0831-000 (32.383 ac) with conditional use to allow a recreational facility (outdoor motorcycle riding/racing) directly related to open space uses & the necessity for a rural location. The site is at **N6641/N6643 Gomoll Rd** on PIN 002-0714-0831-000 (32.383 ac) in the Town of Aztalan. This is in accordance with Sec 11.04(f)7 of the Jefferson County Zoning Ordinance.

FROM A-1, EXCLUSIVE AGRICULTURAL TO A-3, AGRICULTURAL/RURAL RESIDENTIAL

R4446A-22 – James & Steven Mesmer: Create a 2-ac farm consolidation lot at **W1849 Bente Rd** from part of PIN 026-0616-2042-000 (40 ac), Town of Sullivan. This is in accordance with Sec 11.04(f)8 of the Jefferson County Zoning Ordinance.

R4447A-22 – Angela Ritonia-Peot/Robert & Sharon Peot Trust Property: Create a 2.05-ac building site from part of PIN 026-0616-1131-000 (39.737 ac) on **Froelich Rd**, Town of Sullivan. This is in accordance with Sec 11.04(f)8 of the Jefferson County Zoning Ordinance.

CONDITIONAL USE PERMIT APPLICATIONS

CU2073-22 – HL Beemer Trust: Allow an event facility in an existing A-2 zone at **N1507 Groeler Rd**, Town of Koshkonong on PIN 016-0514-1732-002 (1.979 ac). This is in accordance with Sec.11.04(f)7 of the Jefferson County Zoning Ordinance as an “adaptive reuse of a barn.”

CU2074-22 – Aqua Investment Partnership: Allow for ten duplex buildings, established as a planned development in an existing Residential R-2 zone at **W7489 Koshkonong Mounds Road**. The site is in the Town of Koshkonong on PIN 016-0513-2512-001 (35.124 ac). This is in accordance with Sec. 11.04(f)2.

CU2066-22 – Heidi & Andrew Deuster: CU for home occupation floral business in an A-1 Agricultural zone at **N2356 County Rd E**, PIN 024-0516-0314-001 (3 ac), Town of Palmyra. This is in accordance with Sec 11.04(f)6 of the Jefferson County Zoning Ordinance.

7. Adjourn

A Quorum of any Jefferson County Committee, Board, Commission or other body, including the Jefferson County Board of Supervisors, may be present at this meeting.

Individuals requiring special accommodations for attendance at this meeting should contact the County Administrator 24 hours prior to the meeting at 920-674-7101 so appropriate arrangements can be made.

A digital recording of the meeting will be available in the Zoning Department upon request.

RESOLUTION NO. 2022-_____

IN MEMORIAM – Richard “Augie” Tietz

WHEREAS, Augie Tietz of Fort Atkinson was born on December 13, 1937, and died on November 4, 2022, and

WHEREAS, Augie Tietz served on the Jefferson County Board of Supervisors for District 4 from July 2009 until January 2021, and

WHEREAS, as a County Board Supervisor, Augie served on the Board of Health, Economic Development Consortium, Law Enforcement and Emergency Management Committee, Parks Committee, Strategic Planning Committee, Veterans Service Commission, and the Wisconsin River Rail Transit Commission, serving as chair on several committees, and

WHEREAS, Augie was very involved with his community giving countless hours to the Watertown Rotary Club, Watertown Main Street Program, United Way, Interurban Bike Trail Initiative, Watertown Elks Club, Big Brothers Big Sisters of Watertown, and served as an Alderman for the City of Watertown, and

WHEREAS, Augie has been recognized for the planning and securing funds for the construction of the Interurban Trail, Korth Park and Cappie’s Landing during his service as a Jefferson County Board Supervisor. and

WHEREAS, it is fitting for Augie Tietz to be recognized by the Jefferson County Board of Supervisors for his public service, dedication, and thoughtfulness which will be missed by many.

NOW, THEREFORE, BE IT RESOLVED that the Jefferson County Board of Supervisors meeting this 15th day of November 2022, does hereby extend its sincere sympathy to the family of Augie Tietz along with this recognition of his service and dedication to the citizens of Jefferson County.

Referred By:
County Administrator

11-15-2022

REVIEWED: Corporation Counsel: JBW; Finance Director:



RESOLUTION NO. 2022-_____

Establishing non-countywide levies for health and library services

WHEREAS, the non-countywide budget for 2023 containing total department appropriations and levies is apportioned to the municipalities benefiting from the services furnished, and

BE IT FURTHER RESOLVED that the requirement established by Jefferson County's Fund Balance Policy to retain two months of current year budgeted expenditures in the Health Department's Fund Balance is hereby suspended for the 2023 budget year, and that the Health Department's Ending Fund Balance shall not be budgeted at an amount less than one month of the current year's budgeted expenditures.

NOW, THEREFORE BE IT RESOLVED that the sums listed below be levied upon all property in Jefferson County that is taxable for the purpose listed:

Health Department	\$ 914,512
Library Services	\$ 1,179,470

BE IT FURTHER RESOLVED that the above amounts be apportioned to equalized values as established by the State Department of Revenue.

Fiscal Note: The Health mill rate is \$0.1063; and the Library mill rate is \$0.2404 per \$1,000 of equalized value. In 2022, the Health mill rate was \$0.1226 and the library mill rate was \$0.2801, for decreases of \$0.0163 and \$0.0397 in the Health and Library mill rates, respectively.

Referred By:
Finance Committee

11-15-2022

REVIEWED: Corporation Counsel: JBW ; Finance Director:



RESOLUTION NO. 2022-_____

Establishing countywide levy and fees

WHEREAS, the proposed 2023 County Budget was submitted to the Board by the County Administrator on October 11, 2022, and

WHEREAS, the proposed 2023 County Budget was the subject of a public hearing on October 25, 2022, and

WHEREAS, the Board has considered all amendments,

NOW, THEREFORE, BE IT RESOLVED that the authorized positions, the total appropriation for each governmental function as shown below, Fund Balance application and assignments in the Recommended Budget book, and the levy contained in the countywide portion of the 2023 Budget, be levied as a county tax to be raised on the 2022 tax roll as follows:

	<u>Subject to levy limit</u>	<u>Debt levy</u>	<u>Library levy</u>	<u>Total apportioned levy</u>
Countywide levy	\$ 29,732,941	\$ 4,029,243	\$ -	\$ 33,762,184
Noncountywide levy (previously approved)				
Health	914,512	-	-	914,512
Library	<u>-</u>	<u>-</u>	<u>1,179,470</u>	<u>1,179,470</u>
Total	<u>\$ 30,647,453</u>	<u>\$ 4,029,243</u>	<u>\$ 1,179,470</u>	<u>\$ 35,856,166</u>

BE IT FURTHER RESOLVED that the above amount be apportioned according to equalized values established by the Wisconsin Department of Revenue.

BE IT FURTHER RESOLVED that the fee schedule for various licenses, permits and services used to establish revenue amounts in the budget are hereby approved.

Category	General Fund	Health Dept	Human Services	Debt Service	Capital Projects	Highway Dept	MIS Dept	Fleet Management	Total
Expenditures									
General Government	\$ 13,988,762	\$ -	\$ -	\$ -	\$ -	\$ -	\$ 1,942,478	\$ 61,960	\$ 15,993,200
Public Safety	17,879,018	-	-	-	-	-	-	-	17,879,018
Health and Human Services	1,538,834	2,008,379	35,024,371	-	-	-	-	-	38,571,584
Public Works	127,580	-	-	-	-	7,566,556	-	-	7,694,136
Culture, Recreation, and Education	4,613,975	-	-	-	-	-	-	-	4,613,975
Conservation and Development	1,795,588	-	-	-	-	-	-	-	1,795,588
Capital Items and Projects	3,080,693	-	179,892	-	40,418,520	6,125,000	229,000	200,000	50,233,105
Debt Service--Principal	-	-	-	5,610,000	-	-	-	-	5,610,000
Debt Service--Interest	-	-	-	1,852,956	-	-	-	-	1,852,956
Total Expenditures	43,024,450	2,008,379	35,204,263	7,462,956	40,418,520	13,691,556	2,171,478	261,960	144,243,562
Revenues									
Taxes	8,589,150	-	-	-	-	-	-	-	8,589,150
Intergovernmental Revenues	7,646,295	987,296	12,359,713	-	8,355,000	3,928,899	-	-	33,277,203
Licenses and Permits	247,710	-	-	-	-	7,000	-	-	254,710
Fines and Forfeitures	466,200	-	-	-	-	-	-	-	466,200
Public Charges for Services	3,945,327	42,243	11,227,186	-	-	11,000	2,400	-	15,228,156
Intergovernmental Charges	754,185	58,928	1,423,132	-	-	3,305,539	1,914,818	61,960	7,518,562
Miscellaneous Revenues	2,294,067	5,400	362,417	-	-	135,488	-	200,000	2,997,372
Total Revenues	23,942,934	1,093,867	25,372,448	-	8,355,000	7,387,926	1,917,218	261,960	68,331,353
Other Financing Sources									
Unassigned Fund Balance Applied	4,346,326	-	-	-	-	-	-	-	4,346,326
Restricted Funds Applied	1,600,829	-	-	1,343,713	32,063,520	-	-	-	35,008,062
Non-Lapsing (discretionary)									
Funds Applied	701,655	-	-	-	-	-	-	-	701,655
Debt Proceeds	-	-	-	-	-	-	-	-	-
Transfers	(2,309,946)	-	219,946	2,090,000	-	-	-	-	-
Total Other Financing Sources	4,338,864	-	219,946	3,433,713	32,063,520	-	-	-	40,056,043
Tax Levy	\$ 14,742,652	\$ 914,512	\$ 9,611,869	\$ 4,029,243	\$ -	\$ 6,303,630	\$ 254,260	\$ -	\$ 35,856,166

Fiscal Note: As presented, the countywide levy is proposed at \$33,762,184, which is a mill rate of \$3.0309 for general operations and \$0.4107 for debt service fund for a total of \$3.4416 per \$1,000 of taxable value. In 2022, the countywide levy was \$31,392,371, with a general operations mill rate of \$3.3342 and debt service mill rate of \$0.4369, for a decrease of \$0.3034 per \$1,000 of taxable value for 2023 general operations and a decrease of \$0.0261 per \$1,000 per taxable value for 2023 debt service.

Referred By:
Finance Committee

11-15-2022

REVIEWED: Corporation Counsel: JBW ; Finance Director



RESOLUTION NO. 2022-____

Amending the 2023 budget for various Jefferson County departments

Executive Summary

Subsequent to the Finance Committee budget hearings and presentation of the 2023 budget to the Board of Supervisors and public hearing on the 2023 budget, several departments have received further information regarding their budgets. As a result, the following amendments are proposed to the 2023 budget:

1. Land & Water Conservation department – the U.S. Department of Agriculture has approved an additional \$72,500 of federal awards for the purchase of a conservation easement. The County’s match would increase by \$36,250 to \$58,122 and will be funded by carryover funds from the existing PACE program. This will reduce the carryover amount in the Land & Water Conservation department from \$94,372 to \$58,122. The payment to the landowner will increase by \$108,750 to \$228,750.

2. Register of Deeds – the Register of Deeds is proposing to move their land record files from Jefferson County’s servers to a cloud-based storage solution. This will save the County by not having to purchase servers in the future but will create ongoing maintenance and licensing costs. For 2023, the Register of Deeds office will use \$8,000 of funding from its back indexing project funds that were carried forward in 2022, and the Land Information department will fund the remaining \$8,000 from fees it collects that are restricted for land records. This will reduce the carryover amount in the Land Information department from \$264,549 to \$256,549.

3. Human Services –

a. The department wishes to reclassify an amount of \$48,000 previously budgeted in an operating account to a capital account to purchase new playground equipment.

b. The department wishes to combine two part-time positions in the Parents Supporting Parents program into one full-time position. This change does not affect total full-time equivalents or any budgeted amounts, but it does change the position detail which is presented in the budget document.

4. Alcohol/Drug Treatment Court – The State of Wisconsin approved enhancements to the Alcohol/Drug Treatment Court program by increasing the cost allocation for case managers in order to reduce turnover, funding 50% of a psychotherapist position to facilitate a Women’s Intensive Outpatient Treatment program, enhance support specialist services with a focus on agricultural clients, and provide enhancements to assist with flexible testing. This will increase state aid by \$30,647 to \$262,674 and county match by \$42,817. Jefferson County will use ARPA funding for the increase in county match.

WHEREAS, the above Executive Summary is incorporated into this resolution, and

WHEREAS, Jefferson County has received information that did not exist at the time the budget was presented to the Finance Committee, and

WHEREAS, this new information could enhance the services delivered to the residents of Jefferson County as described in the Executive Summary,

NOW, THEREFORE, BE IT RESOLVED that the 2023 County Budget is hereby amended for the adjustments described herein.

Fiscal Note: Please see the attached Budget Amendment Sheet for specific line-item changes. This is a budget amendment. County Board approval requires a two-thirds vote of the entire membership of the County Board (20 votes of the 30-member County Board).

Referred By:
Finance Committee

11-15-2022

REVIEWED: Corporation Counsel: JBW ; Finance Director: 

**JEFFERSON COUNTY
BUDGET ADJUSTMENT OR AMENDMENT REQUEST**

<u>Adjustment</u>	<u>Description</u>	<u>Approval Level</u>
<input type="checkbox"/> Level 1	Adjustments of operating appropriations up to \$4,999 from one account to another <u>within</u> the department's budget	Department Head
<input type="checkbox"/> Level 2	<input type="checkbox"/> a. Adjustments of operating appropriations over \$5,000 and up from one account to another <u>within</u> the department's budget.	Administrator
	<input type="checkbox"/> b. Substitution of capital items or adjustment of operating to capital appropriations up to \$24,999 from one account to another <u>within</u> the department's budget.	Administrator
	<input type="checkbox"/> c. Transfers between departments within a budgetary function of up to \$24,999.	Administrator
<input type="checkbox"/> Level 3	Amendments of operating or capital appropriations needing additional funding from contingency funds from that are under 10% of the funds originally appropriated for an individual department.	Finance Committee
<input checked="" type="checkbox"/> Level 4	<input type="checkbox"/> a. Amendments of operating or capital appropriations needing additional funding from contingency funds from that are over 10% of the funds originally appropriated for an individual department.	County Board
	<input type="checkbox"/> b. New programs in a department that were not originally budgeted through increase in expenses with offsetting increase in revenue for that program. (i.e. grant funding or donations)	County Board
	<input checked="" type="checkbox"/> c. Substitution of capital items or adjustment of operating to capital appropriations over \$25,000 from one account to another <u>within</u> the department's budget.	County Board
	<input type="checkbox"/> d. Amendments of operating or capital appropriations needing funding from general fund balance.	County Board

Increase	Decrease	Org	Obj	Proj	Account Title	Amount
	<input checked="" type="checkbox"/>	65690986	531319	63188	Other Operating Supplies	(48,000.00)
<input checked="" type="checkbox"/>		65690986	594810	63188	Capital Equipment	48,000.00
<input checked="" type="checkbox"/>		11102	424001	22224	Federal Grants	42,817.00
<input checked="" type="checkbox"/>		11102	421001		State Aid	30,647.00
<input checked="" type="checkbox"/>		11102	521219		Other Professional Services	73,464.00
<input checked="" type="checkbox"/>		12407	424001		Federal Grants	72,500.00
<input checked="" type="checkbox"/>		12407	594816		Capital Conserve Easement	108,750.00
	<input checked="" type="checkbox"/>	12407	594960		Capital Reserve	(36,250.00)
<input checked="" type="checkbox"/>		12503	531303		Computer Equip/Software	8,000.00
	<input checked="" type="checkbox"/>	12503	594950		Operating Reserve	(8,000.00)

Description of Adjustment:

Department Head Signature _____ Date _____

County Administrator Signature _____ Date _____

- 1) Salaries and Fringes are not included as operating above, any changes to salaries and fringes must be discussed with the County Administrator.
- 2) The County Administrator shall make the determination if the budget adjustment needs to go to the County Board.
- 3) Any items \$5,000 and above must be capitalized.

RESOLUTION NO. 2022- _____

Introducing resolution to vacate and discontinue a public way

Executive Summary

Jefferson County received an offer to purchase a remnant parcel of property adjoining County Highway B in the Town of Aztalan which was originally purchased by Jefferson County for the purpose of highway right-of-way. The offer was made by Rick Winter and Bridget Olson who own the adjoining property and use this parcel of county owned property as their only access to their residence. The attached exhibit shows the boundaries of this parcel and that of the adjoining landowners, encompassing approximately .60 acres. Wisconsin Statute § 83.08 authorizes counties to sell property owned for highway purposes, at public or private sale, when the county board shall determine that such property is no longer necessary for the county's use for highway purposes. Before the County can sell this remnant parcel, the County must first vacate and discontinue that portion of Highway B which remains a public way pursuant to Wisconsin Statute § 66.1003(4).

The other surrounding landowner has been provided notice of this sale and stated his objections to the Highway Committee. After considering the arguments of both adjoining landowners, the Jefferson County Highway Committee recommended forwarding this resolution to the Jefferson County Board of Supervisors to approve vacating and discontinuing that portion of Highway B which remains a public way and selling said parcel to Rick Winter and Bridget Olson based on the fact that the property is the only access point to their adjoining property and the right of way is no longer necessary for the county's use for highway purposes. The Highway Committee's decision was also based on the Highway Commissioner's offer to construct an alternate secondary access to Highway B for the other adjoining landowner.

Before the County Board can act on a resolution to vacate and discontinue a public way, a public hearing must be held not less than 40 days after the date on which this resolution is introduced with notice served on owners of all of the frontage of the lots and lands abutting upon the public way at least 30 days before the public hearing. This resolution is for the purpose of introducing this matter to the County Board, with formal action being taken at the January 2023 County Board meeting to determine whether or not that portion of Highway B which remains a public way should be vacated and discontinued at which time a formal plat of survey and legal description will be provided to the County Board.

WHEREAS, the executive summary is incorporated into this resolution, and

WHEREAS, Jefferson County owns a parcel of real property adjoining County Highway B in the Town of Aztalan, which was originally purchased for highway right-of-way purposes, and

WHEREAS, due to the relocation of County Highway B, there is no longer a need for Jefferson County to maintain this property as a public way or continue ownership of the adjoining highway right-of-way, and

WHEREAS, Rick Winter and Bridget Olson own a parcel of real property that adjoins this parcel of County owned right-of-way and currently use this property as their only access to their residential property, and

WHEREAS, Rick Winter and Bridget Olson have offered to purchase this .60 acre parcel of Highway B right-of-way that is no longer used or needed by Jefferson County, and

WHEREAS, before this offer to purchase can be accepted, the County must first vacate and discontinue that portion of Highway B which remains a public way pursuant to Wisconsin Statute § 66.1003(4), and

WHEREAS, this resolution is for the purpose of introducing this matter to the County Board and will not result in any formal action being taken, and

WHEREAS, the parcel of real property is described in the attached exhibit, and

WHEREAS, Wisconsin Statute § 83.08 authorizes the sale of remnant parcels of county owned real property as follows:

(4) Subject to s. 84.09(3)(c) and to the approval of the department, the county board is authorized and empowered to sell at public sale, or to sell at private sale for fair market value to an owner of adjacent property, property owned by the county in fee for highway purposes, when the county board shall determine that such property is no longer necessary for the county's use for highway purposes. The funds derived from such sale shall be deposited in the county highway fund and the expense incurred in connection with the sale shall be paid from that fund. However, approval of the department is not required where county funds only have been used.

WHEREAS, the fair market value of this property has been determined to be \$8,300 by Aari Kevin Roberts from AJ Appraisals and Real Estate, LLC, and

WHEREAS, Jefferson County has no use for this remnant parcel of real property.


NOW, THEREFORE, BE IT RESOLVED by the Jefferson County Board of Supervisors that a public hearing shall be held not less than 40 days after the date on which this resolution is introduced with notice served on owners of all of the frontage of the lots and lands abutting upon the public way at least 30 days before the public hearing pursuant to Wisconsin Statute § 66.1003(4).

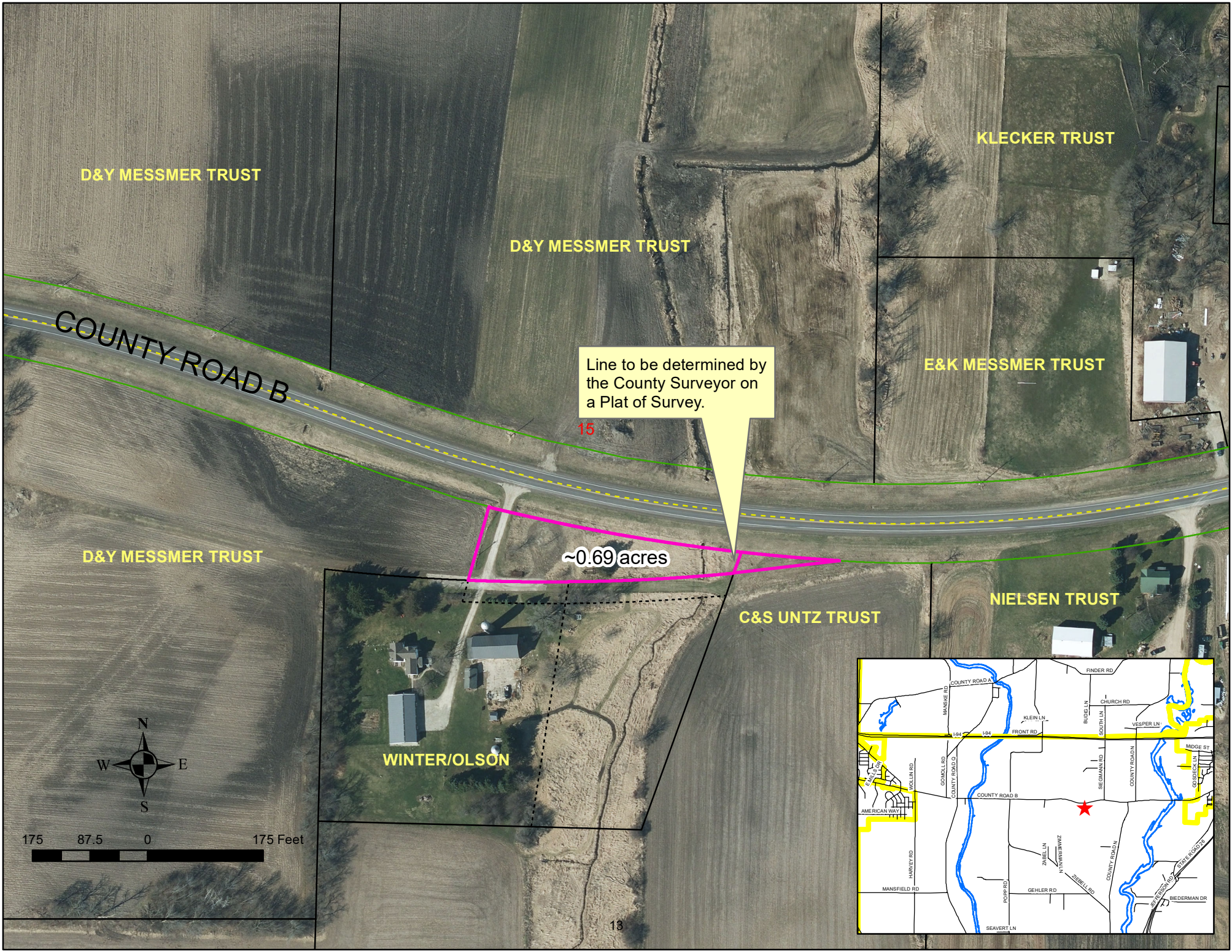
BE IT FURTHER RESOLVED, that this resolution is for the purpose of introducing this matter to the County Board, with formal action being taken at the January, 2023 County Board meeting to determine whether or not that portion of Highway B which remains a public way should be vacated and discontinued, and if vacated and discontinued, whether or not the offer to purchase by Rick Winter and Bridget Olson should be accepted.

Fiscal Note: This resolution has no fiscal impact.

Referred By:
Highway Committee

11-15-2022

Reviewed: Corporation Counsel: JBW; Finance Director: 



D&Y MESSMER TRUST

KLECKER TRUST

D&Y MESSMER TRUST

E&K MESSMER TRUST

COUNTY ROAD B

Line to be determined by the County Surveyor on a Plat of Survey.

15

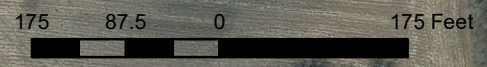
D&Y MESSMER TRUST

~0.69 acres

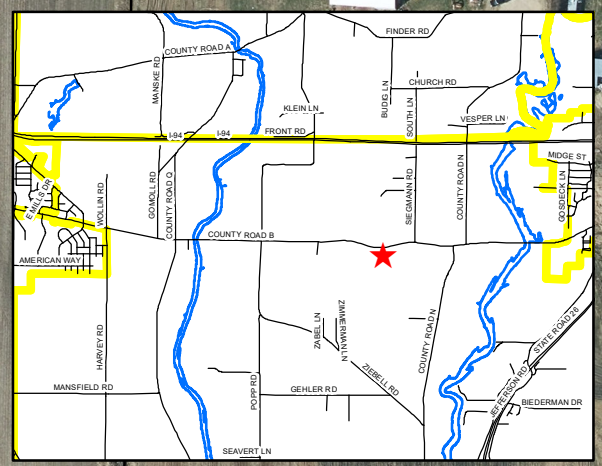
C&S UNTZ TRUST

NIELSEN TRUST

WINTER/OLSON



13



RESOLUTION NO. 2022-_____

**Authorizing state human services contracts, consortium agreements,
and professional service and care provider contracts**

Executive Summary

The Jefferson County Human Services Department contracts with state agencies, consortiums and in excess of 100 professional service and care providers to fulfill its statutory duties. Each year contracts are renewed and/or updated with additional providers. State law requires County Board approval of the state contracts set forth in this resolution. The contracts have not been reproduced and attached to this resolution because they total more than 100 pages. The Wisconsin County Human Service Association negotiates the basic agreements on behalf of the counties which are standard state forms and are not subject to negotiation by individual counties. The professional service and care provider contract list for 2023 is attached. These provider contracts are reviewed by the Jefferson County Corporation Counsel to ensure compliance with the County's Purchasing Ordinance, and contain the language and terms set forth by the State of Wisconsin Department of Health Services Purchase of Care Services Guide and section 46.036 of the Wisconsin Statutes. The Human Services Board considered this resolution at its October 11, 2022, meeting and recommended forwarding to the County Board to approve entering into professional service and care provider contracts with the providers on the attached list and entering into state contracts and consortium agreements as set forth below for 2023.

WHEREAS, the executive summary is incorporated into this resolution, and

WHEREAS, the Jefferson County Human Services Department contracts with several different state agencies, consortiums, and in excess of 100 professional service providers and care providers to fulfill its statutory duties, usually on an annual basis, as approved by the Human Services Board, and

WHEREAS, the Social Services & Community Programs contracts with the Department of Health Services, and the Department of Children and Families and Youth Aids Program contracts, are statutorily required to be approved by the County Board, and

WHEREAS, the Human Services Board recommends approval of the Social Services & Community Programs, including the Children's Long Term Support program, and State Targeted Response contracts with the Department of Health Services in the anticipated amount of \$3,098,215; the Substance Abuse Prevention and Treatment Block Grant Supplemental Award with the Department of Health Services in the amount of \$78,695; the Mental Health Services Block Grant Supplemental Award with the Department of Health Services in the amount of \$41,582; the Birth to 3 Pandemic Recovery Support Grant with the Department of Health Services in the amount of \$127,611; the Crisis Program Enhancement Servicing Rural Areas Grant with the Department of Health Services in the amount of \$100,000; the Aging and Disability Resources contract, which includes additional amounts for Medicare Improvements for Patients and Providers, the State Health Insurance Assistance Program, and the State Pharmaceutical Assistance Program in the anticipated amount of \$650,142; the Department of Children and Families State County Child Welfare contract,

which includes the Youth Aids Program contract and the Targeted Safety Support contract, in the anticipated amount of \$2,568,174; the Older American Programs contract in the anticipated amount of \$618,086; the Department of Transportation contracts pursuant to section 85.21 of the Wisconsin Statutes (county elderly and disabled transportation assistance), and section 49 USC 5310 (transportation services provided to older adults and people with disabilities), in the anticipated amount of \$316,153; the Department of Health Services Division of Long Term Care contract in the anticipated amount of \$625,097; the Intensive Outpatient Program contract with the Department of Corrections in the anticipated amount of \$28,196 per year for the state fiscal biennium of July 1, 2021, to June 30, 2023; and the Child Care contract in the anticipated amount of \$156,624, and

WHEREAS, the consortium agreement requires County Board approval for the State and Federal Income Maintenance Programs through Southern Consortium in the anticipated amount of \$1,329,969.

NOW, THEREFORE, BE IT RESOLVED that the Human Services Director or the Administrative Services Division Manager is authorized to execute the state contracts and consortium contract set forth above.

BE IT FURTHER RESOLVED that the Human Services Director or the Administrative Services Manager is authorized to sign addendums or revisions to said contracts during the course of the year as necessary.

BE IT FURTHER RESOLVED that the Human Services Director or Administrative Services Manager is authorized to sign all other contracts with state agencies and consortiums pursuant to section 46.23(6m)(c) of the Wisconsin Statutes, and all professional services and care provider contracts as approved by the Human Services Board in accordance with the Jefferson County Purchasing Ordinance.

Fiscal Note: The costs associated with these state and consortium contracts have been included as an appropriation in the 2023 budget.

Referred By:
Human Services Board

11-15-2022

REVIEWED: Corporation Counsel: JBW ; Finance Director:



2023 Provider Contracts (10/05/2022)

Contract Number		Provider	Service	Target	2022			2023			Totals	
23-100		5 Door Recovery (Hope Haven)	AODA Residential	AODA	295.00	per	day	299.34	per	day	1.5%	n/a
23-101		A & J Vans, Inc. dba A & J Mobility	Adaptive Aids - Vehicle	Child	22,975.00	per	item	22,975.00	per	item	0.0%	30,000
23-102		Abilities, Inc. - Apartments, CBRF & AFH, EMH Crisis Stabilization	Adult Alt Care	CMI	3,540.00	per	month	3,540.00	per	month	0.0%	300,000
23-103		Access Elevator (All About Access) Waiting	Home Modification	various	14,549.00	per	modification	14,549.00	per	modification	0.0%	14,549
23-104		Advocates for Healthy Transitional Living, LLC**	Child Alt Care	Child	1800-4000	per	month	1800-4000	per	month	#DIV/0!	48,000
23-105		Affiliated Wellness Group, LLC	Psychotherapy	n/a	90.00	per	hour	90.00	per	hour	0.0%	n/a
23-106		Affinity Health Care LLC (Pine Ridge House) NOP	Adult Alt Care	Adult	4,541.00	per	month	4,541.00	per	month	0.0%	54,492
23-107		Agnesian - St. Agnes Hospital	Inpatient Services	MH	1,308.00	per	day	1,308.00	per	day	0.0%	n/a
23-108		Alere Toxicology	Urine Screens	various	38.50	per	screen	38.50	per	screen	0.0%	11,550
23-109		Alina Flink	IV-E Legal/JET	Child	85.00	per	hour	85.00	per	hour	0.0%	n/a
23-110		All About Learning - not using yet	Child Care	Child	varies	per	Day	varies	per	Day	#DIV/0!	8,000
23-111		Allied Counseling Services	Psychological	MH	86.35	per	hour	86.35	per	hour	0.0%	60,000
23-112		Alternatives in Psychological Consultation- JRW Region (Jefferson County not using)	CCS Regional Service Array	CCS	128.56	per	hour	128.56	per	hour	0.0%	n/a
23-113		Anesis Center for Marriage and Family Therapy - JRW Region	CCS Regional Service Array	CCS	0.00	per	hour	128.56	per	hour	#DIV/0!	10,000
23-114		Angelsense	Personal Emergency Response Systems (PERS) -	Child	39.99	per	month	39.99	per	month	0.0%	15,000
23-115		ANU Family Based Services - BH, Respite**	Respite	Child	97.85	per	hour	97.85	per	hour	0.0%	45,000
23-116		ANU Family Based Services - JRW Region	CCS Regional Service Array	CCS	97.85-154.50	per	hour	97.85-154.50	per	hour	#DIV/0!	24,000
23-117		Applied Therapies & Wellness Center, S.C.	Therapeutic Services	MH	0.00	per	hour	0.00	per	hour	#DIV/0!	n/a
23-118		Arbor Place Inc.	Residential SUD Treatment	MH	101-323	per	hour	101-323	per	hour	#DIV/0!	100,000
23-119		ARC Community Services, Inc.	AODA Residential Trmt	Adult	120.00	per	day	120.00	per	day	0.0%	10,000
23-120		Ascension includes Wheaton	Inpatient Services	MH	1,388.00	per	day	1,388.00	per	day	0.0%	n/a

2023 Provider Contracts (10/05/2022)

Contract Number		Provider	Service	Target	2022			2023			Totals	
23-	121	Aspire Therapy and Development Services, LLC	Respite Care	Child	149.00	per	hour	149.00	per	hour	0.0%	10,000
23-	122	Atkins, Caleb & Elizabeth	Foster Care	Child	1,688.00	per	month	1,688.00	per	month	0.0%	20,256
23-	123	Aurora Health Care, Inc.	Inpatient Services	MH	1,175.00	per	day	1,175.00	per	day	0.0%	50,000
23-	124	Autism Society Southeast Wisconsin - WAITING	Respite	various	50.00	per	day	50.00	per	day	0.0%	250
23-	125	Autism Spectrum Therapies of Delaware dba WI Early Autism Project (WEAP)	Respite Care	Child	106.50	per	hour	106.50	per	hour	0.0%	2,000
23-	126	Avail Therapeutic Services- JRW Region (Jefferson County not using)	CCS Regional Service Array	CCS	97.85-154.50	per	hour	97.85-154.50	per	hour	#DIV/0!	n/a
23-	127	Badgerland After School Enrichment (BASE) - WAITING	Respite Care	Child	345.00	per	unit	345.00	per	unit	0.0%	5,000
23-	128	Bales, Marshall, MD	Psychological	MH	134.21	per	hour	134.21	per	hour	0.0%	20,000
23-	129	Behavioral Tech LLC	Consulting	MH	1,500.00	per	year	1,500.00	per	year	0.0%	1,500
23-	130	Behl Fence & Decking LLC - WAITING	Home Modification	child	11,012.50	per	item	11,012.50	per	item	0.0%	11,013
23-	131	Beyond Words Art Therapy & Counseling LLC	Counseling & Therapeutic Services	Child	3,500.00	per	year	3,500.00	per	year	0.0%	10,000
23-	132	Beyond Words Art Therapy & Counseling LLC - JRW Region	CCS Regional Service Array	CCS	85.00	per	hour	85.00	per	hour	0.0%	36,000
23-	133	BILD-Bridgeway Independent Living Designs	Home Modifications	Child	U & C	per	modification	U & C	per	modification	#DIV/0!	27,000
23-	134	Bilingual Training Consultants	Interpreter	n/a	0.00	per	n/a	0.00	per	n/a	#DIV/0!	4,000
23-	135	Birch Haven Counseling and Consulting	Infant, Early Childhood, Mental Health Consultation	B-3	31.25	per	unit	31.25	per	unit	0.0%	10,000
23-	136	Blackbird Psychotherapy, LLC - JRW Region (Jefferson County not using)	CCS Regional Service Array	CCS	0.00	per	hour	115.00	per	hour	#DIV/0!	n/a
23-	137	Blandine House	AODA Residential	Adult	117.00	per	day	117.00	per	day	0.0%	21,060
23-	138	BoyzLife, LLC **	Child Alt Care	child	299.36	per	day	299.36	per	day	0.0%	109,266
23-	139	Braun Thyssen Krupp Elevator Inc.	Elevator Maintenance	All	0.00	per	year	0.00	per	year	#DIV/0!	n/a
23-	140	Brigham Impact Group(BIG)	Respite Care, DLS, Mentoring	Child	\$6-\$9.50	per	unit	\$6-\$9.50	per	unit	#DIV/0!	10,000
23-	141	Brigham Impact Group(BIG) - JRW Region (Jefferson County not using)	CCS Regional Service Array	CCS	0.00	per	hour	43-87.08	per	hour	#DIV/0!	10,000

2023 Provider Contracts (10/05/2022)

Contract Number		Provider	Service	Target	2022			2023			Totals	
23-142		Buckaroo's Adult Family Home, LLC	Respite Care	Adult	533.00	per	day	533.00	per	day	0.0%	7,462
23-143		C & W Med Rides LLC	Medical Rides	Adults & Elderly	100.00	per	round trip	100.00	per	round trip	0.0%	4,000
23-144		C.A. Counseling and Consultants, LLC - JRW Region (Jefferson County not using)	CCS Regional Service Array	CCS	\$39.45-\$158.16	per	hour	\$39.45-\$158.16	per	hour	#DIV/0!	n/a
23-145		C.E.S.A. 2 (RENT)	Space Charges received	n/a	-1,613.00	per	month	-1,613.00	per	month	0.0%	-6,452
23-146		Camacho, Paul	Interpreter	n/a	0.00	per	hour	0.00	per	hour	#DIV/0!	2,700
23-147		Center for Change - JRW Region (Jefferson County not using)	CCS Regional Service Array	CCS	100-137.31	per	hour	100-137.31	per	hour	#DIV/0!	n/a
23-148		CGS, Inc. dba Compass Guardianship Services	Guardianship	Adults & Elderly	125-200	per	month	125-200	per	month	#DIV/0!	5,000
23-149		Child and Family Therapeutic Systems - JRW Region	CCS Regional Service Array	CCS	128.58	per	hour	128.58	per	hour	0.0%	35,000
23-150		Children's Service Society - JRW Region (Jefferson County not using)	CCS Regional Service Array	CCS	93.76	per	hour	93.76	per	hour	0.0%	n/a
23-151		Children's Service Society dba Children Hospital of WI Community Services	Child Alt Care	Child	3,535.61	per	month	3,535.61	per	month	0.0%	50,000
23-152		Christensen, Tammy - WAITING	Foster Care	Child	1,700.00	per	month	1,700.00	per	month	0.0%	20,400
23-153		Christian Servants Home Care, LLC	In-Home Supports	Adults & Elderly	\$29-\$36	per	hour	\$29-\$36	per	hour	#DIV/0!	5,000
23-153		Christian Servants Home Care, LLC	Various	Child	\$29-\$36	per	hour	\$29-\$36	per	hour	#DIV/0!	800,000
23-154		Christie's Support Services, LLC	Guardianship	Adults & Elderly	200.00	per	month	200.00	per	month	0.0%	3,000
23-155		Circle of Song Music Therapy, LLC	Counseling & Therapeutic Services	Child	0.00	per	hour	128-170	per	hour	#DIV/0!	10,000
23-156		City of Jefferson	Nutrition Rent	Eld	25.00	per	month	25.00	per	month	0.0%	300
23-157		City of Lake Mills	Nutrition Rent	Eld	50.00	per	month	50.00	per	month	0.0%	600
23-158		City of Waterloo	Nutrition Site Manager	Eld	18.33	per	hour	18.33	per	hour	0.0%	9,532
23-159		CJB Ventures Inc. dba BrightStar Care	Respite	Child	6.25	per	unit	6.25	per	unit	0.0%	3,000
23-160		Clinical Psychology Associates	Psychological	Child	160.00	per	hour	160.00	per	hour	0.0%	1,500
23-161		Clinical Psychology Associates (JRW Region)	CCS Regional Service Array	CCS	175.00	per	hour	175.00	per	hour	0.0%	5,000

2023 Provider Contracts (10/05/2022)

Contract Number		Provider	Service	Target	2022			2023			Totals	
23-162	162	CliniCare Corporation ** NOP	Child Alt Care	Child	472.63	per	session	472.63	per	session	0.0%	172,510
23-163	163	Columbia St. Mary's Hospital Milwaukee, Inc. Need inpatient pysch	Inpatient Services	MH	1,100.00	per	month	1,100.00	per	month	0.0%	n/a
23-164	164	Comfort Care 4 U NOP	Adult Alt Care	Adult	402.00	per	day	402.00	per	day	0.0%	n/a
23-165	165	Community Care Programs, Inc.	Mental Health	Child	450-1500	per	month	450-1500	per	month	#DIV/0!	250,000
23-166	166	Community Care Resources**	Child Alt Care	Child	2500-4346	per	month	2500-4346	per	month	#DIV/0!	90,000
23-167	167	Community Coordinated Child Care, Inc. - (4-C)	Child Care Certification	Child	Bill		Actual Costs	Bill		Actual Costs	#DIV/0!	7,906
23-168	168	Community Service Associates dba Pauquette Center for Psychological Services	Psychological Evaluations, AODA Assessments, 51 Evaluations	MH	\$150-225.00	per	hour	\$150-225.00	per	hour	#DIV/0!	50,000
23-169	169	Community Works, LLC	Mentoring/Respite	Child	18.75	per	unit	18.75	per	unit	0.0%	15,600
23-170	170	Compassionate Care Services - JRW Region (Jefferson County not using)	CCS Regional Service Array	CCS	125.46	per	hour	125.46	per	hour	0.0%	n/a
23-171	171	Compassionate Family Services, LLC	Training for Parents/Guardian	Child	18.75	per	unit	18.75	per	unit	0.0%	500,000
23-172	172	Compassionate Family Services, LLC - JRW Region	CCS Regional Service Array	CCS	\$69.38-\$76.96	per	hour	\$69.38-\$76.96	per	hour	#DIV/0!	120,000
23-173	173	Compassionate Peer Support and Training LLC - JRW Region (Jefferson County not using)	CCS Regional Service Array	CCS	50.00	per	hour	50.00	per	hour	0.0%	n/a
23-174	174	Compliance & Quality Consulting	Consulting	MH	35.00	per	hour	35.00	per	hour	0.0%	10,000
23-175	175	Connecting Youth Inc.**	Child Alt. Care	Child	245.14	per	day	245.14	per	day	0.0%	73,542
23-176	176	Connections Counseling	Counseling	various	140-170	per	hour	140-170	per	hour	#DIV/0!	43,000
23-177	177	Connections Counseling - JRW Region (Jefferson County not using)	CCS Regional Service Array	CCS	128.56	per	hour	128.56	per	hour	0.0%	n/a
23-178	178	Cornerstone Counseling Services	Psychotherapy	n/a	53.06	per	hour	53.06	per	hour	0.0%	n/a
23-179	179	Corporate Business Systems	Printer and Fax	All	0.00	per	month	0.00	per	month	#DIV/0!	1,600
23-180	180	County of La Crosse WI NOP**	Child Alt Care	varies	250.00	per	day	250.00	per	day	0.0%	80,250
23-181	181	Credence Therapy Associates - JRW Region (Jefferson County not using)	CCS Regional Service Array	CCS	124.68	per	hour	124.68	per	hour	0.0%	n/a

2023 Provider Contracts (10/05/2022)

Contract Number		Provider	Service	Target	2022			2023			Totals	
23-182	182	Cross Roads Kids Connection	Child Care	child	\$8-\$30	per	hour	\$8-\$30	per	hour	#DIV/0!	3,550
23-183	183	Crossroads Counseling Center Inc.	Counseling	Child	90.00	per	hour	90.00	per	hour	0.0%	2,500
23-184	184	Crossroads Counseling Center Inc. - JRW Region (Jefferson County not using)	CCS Regional Service Array	CCS	105-175	per	hour	105-175	per	hour	#DIV/0!	n/a
23-185	185	Dane County DHS**	Emerg Detention	MH	175.00	per	hour	175.00	per	hour	0.0%	n/a
23-186	186	Dane County Fence and Deck Company, Inc	Home Modification	Child	8,680.00	per	item	8,680.00	per	item	0.0%	8,680
23-187	187	Dave Gallup Foundation	AODA Res Service	MH	20,000.00	per	year	20,000.00	per	year	0.0%	20,000
23-188	188	Daybreak, Inc. - Waupan/Horicon	Adult Alt Care	varies	202.68	per	day	202.68	per	day	0.0%	175,000
23-189	189	Derrick's House	Supervised Independent Living	Del	200.00	per	day	200.00	per	day	0.0%	61,200
23-190	190	Diamond Mental Health, LLC	Counseling	MH	90.16	per	hour	90.16	per	hour	0.0%	30,000
23-191	191	Diamond Mental Health, LLC - JRW Region Only	CCS Regional Service Array	CCS	90.16	per	hour	90.16	per	hour	0.0%	28,000
23-192	192	Dodge County HSD**	Non-Secure Det	Child	0.00	per	day	0.00	per	day	#DIV/0!	n/a
23-193	193	Dodge County Medical Facilities dba Clearview Behavioral Health	Adult Alt Care	Adult	419.00	per	day	419.00	per	day	0.0%	152,935
23-194	194	Dr. Lori Pyter dba Family Psychological Services	Psychological	Child	120.00	per	hour	120.00	per	hour	0.0%	n/a
23-195	195	Easter Seals of SE(Corp Guardian)	Corp Guardian	various	0.00	per	month	0.00	per	month	#DIV/0!	n/a
23-195	195	Easter Seals SE(Respite) no summer camp in 2022	Respite	Child	0.00	per	session	0.00	per	session	#DIV/0!	n/a
23-196	196	Easter Seals of Wisconsin (Wawbeek and Respite)	Respite	child	891.00	per	session	891.00	per	session	0.0%	5,000
23-197	197	Edgerton Care Center, Inc (DBA WISH)	PC & SHC & HDM	Elderly	\$22. -\$35	per	hour	\$22. -\$35	per	hour	#DIV/0!	20,000
23-198	198	Education and Treatment Alternatives, Inc	Consulting	Del	11,833.00	per	year	11,833.00	per	year	0.0%	11,833
23-199	199	Emery Cyclery	Adaptive Aids	Child	4,500.00	per	item	4,500.00	per	item	0.0%	5,000
23-200	200	Emily Barrett Wellness & Psychotherapy LLC	Psychotherapy	MH	50.00	per	hour	50.00	per	hour	0.0%	10,000
23-201	201	Erika Hagen, PhD	Consulting/Data Review	MH	100.00	per	hour	100.00	per	hour	0.0%	4,500

2023 Provider Contracts (10/05/2022)

Contract Number		Provider	Service	Target	2022			2023			Totals	
23-	202	eSpecial Needs	Adaptive Aids, Specialized Medical & Therapeutic	Child	160-1200	per	item	160-1200	per	item	#DIV/0!	5,000
23-	203	Exodus Transitional Care Facility	AODA Res Service	MH	103.00, 36.11	per	day	103.00, 36.11	per	day	#DIV/0!	10,000
23-	204	Family and Children's Center**	Child Alt. Care	Child	245.14	per	daily	245.14	per	daily	0.0%	150,000
23-	205	Family Service Agency of Waukesha County, Inc.	Group Therapy	Child	35.00	per	class	35.00	per	class	0.0%	2,100
23-	206	Family Service Agency of Waukesha County, Inc. - JRW Region (Jefferson not using)	CCS Regional Service Array	CCS	118.36	per	hour	118.36	per	hour	0.0%	10,000
23-	207	Family Works**	Child Alt Care	Child	2,544.00	per	month	2,544.00	per	month	0.0%	48,000
23-	208	Feeling Good Institute	Training for Behavioral Health Staff	Adult	1,000.00	per	year	1,000.00	per	year	0.0%	12,000
23-	209	Feil's Catering	Elderly Nutrition Program	Eld	5.30	per	meal	5.30	per	meal	0.0%	190,000
23-	210	First Stage Milwaukee, Inc.	Respite Care	Child	395.00	per	session	395.00	per	session	0.0%	395
23-	211	Fiscal Assistance, Inc.	Fiscal Agent	Child	various	per	hour	various	per	hour	#DIV/0!	375,000
23-	212	Fischer Law Offices	IV-E Legal	Child	180.00	per	hour	180.00	per	hour	0.0%	25,000
23-	213	Fond du Lac County Human Services	Inpatient Services	MH	1,300.00	per	day	1,300.00	per	day	0.0%	85,000
23-	214	Forensic Fluids Laboratories, Inc	Test Kits	varies	25.00	per	kit	25.00	per	kit	0.0%	15,000
23-	215	Fort Kidz Too	Daycare	Child	165.00	per	week	165.00	per	week	0.0%	5,115
23-	216	Foundations Counseling Center, LLC. - JRW Region	CCS Regional Service Array	CCS	70.00	per	hour	70.00	per	hour	0.0%	30,000
23-	217	Foundations Health & Wholeness	Child Alt. Care	Child	4,000.00	per	month	4,000.00	per	month	0.0%	48,000
23-	218	Fouts, Susan	Foster Care	Child	1,000.00	per	month	1,000.00	per	month	0.0%	12,000
23-	219	Frazier Support Services Peace of Mind	Child Alt Care	Child	250.64	per	hour	250.64	per	hour	0.0%	91,484
23-	220	Friends of Women in Recovery (Beacon)	Halfway House	AODA	186.00	per	day	186.00	per	day	0.0%	75,000
23-	221	FW Consulting - DHFS, LLC	Fiscal Agent	DD	various	per	hour	various	per	hour	#DIV/0!	1,200,000
23-	222	G & L Advocacy, Inc.	Guardianship	Adults & Elderly	125-200	per	month	125-200	per	month	#DIV/0!	10,000

2023 Provider Contracts (10/05/2022)

Contract Number		Provider	Service	Target	2022			2023			Totals	
23-	223	Game-U Enterprises LLC	Consumer Education and Training	child	90.00	per	session	90.00	per	session	0.0%	25,000
23-	224	Gemiini Systems, Inc.	Consumer Education and Training	Child	98.00	per	unit	98.00	per	unit	0.0%	5,000
23-	225	Genesee Community Services, LLC (broke out this LLC from ODTC-Genesee Lake School Contract	Counseling	Child	27.50	per	unit	27.50	per	unit	0.0%	150,000
23-	226	Goeschko Law Offices	IV-E Legal	Child	180.00	per	hour	180.00	per	hour	0.0%	25,000
23-	227	Grant Erickson	IV-E Legal/JET	Child	85.00	per	hour	85.00	per	hour	0.0%	n/a
23-	228	Greenfield Rehabilitation Agency, Inc. - Rehab Resources, Inc.	B-3 Therapy	DD	0.00	per	hour	0.00	per	hour	#DIV/0!	n/a
23-	229	Habilitation Centers, LLC d/b/c Millcreek of Arkansas** NOP	Child Alt. Care	Child	530.00	per	day	530.00	per	day	0.0%	64,660
23-	230	Hady Electric, Inc.	Home Modification		7,139.19	per	item	7,139.19	per	item	0.0%	7,139
23-	231	Haggart, Mel, MD	Staff Doctor	MH	164.00	per	hour	164.00	per	hour	0.0%	n/a
23-	232	Harmony Counseling and Consultation, LLC - JRW Region (Jefferson County not using)	CCS Regional Service Array	CCS	126.28	per	hour	126.28	per	hour	0.0%	n/a
23-	233	Healing Harmonies, LLC	Music Therapy	Child	67.83	per	session	67.83	per	session	0.0%	2,500
23-	234	Healing Hearts Family Counseling Center, LLC	Therapy	Child	100-210	per	hour	100-210	per	hour	#DIV/0!	7,000
23-	235	Healthy Minds, LLC - JRW Region	CCS Regional Service Array	CCS	49.64-115.80	per	hour	49.64-115.80	per	hour	#DIV/0!	15,000
23-	236	Highways and Hedges Therapeutic Systems, LLC - JRW Region (Jefferson County not using)	CCS Regional Service Array	CCS	32-128	per	hour	32-128	per	hour	#DIV/0!	n/a
23-	237	Holistic Counseling Services - JRW Region (Jefferson County not using)	CCS Regional Service Array	CCS	124.04	per	hour	124.04	per	hour	0.0%	n/a
23-	238	Home Care Assistance Services, LLC dba Visiting Angels LAS	PC & SHC	various	\$19-\$24.50	per	hour	\$19-\$24.50	per	hour	#DIV/0!	50,000
23-	239	Home, Health & Happiness, LLC d/b/a Home Helpers of Lake Country	Supportive Home Care	Child	8.25	per	unit	8.25	per	unit	0.0%	34,320
23-	240	Honey Creek Counseling and Recovery Services, LLC	Therapeutic Services	MH	37.50	per	unit	37.50	per	unit	0.0%	7,500
23-	241	Hopeful Haven, Inc.**	Child Alt Care	Child	2600-4717	per	month	2600-4717	per	month	#DIV/0!	310,000

2023 Provider Contracts (10/05/2022)

Contract Number		Provider	Service	Target	2022			2023			Totals	
23-	242	Hussin, Melissa	Foster Care	Child	856.00	per	month	856.00	per	month	0.0%	25,000
23-	243	Incredible Years, Inc.	Training	varies	7,300.00	per	year	7,300.00	per	year	0.0%	7,300
23-	244	Integrative Psychological Consultants	Psychosexual Evaluations	MH	175.00-275.00	per	hour	175.00-275.00	per	hour	#DIV/0!	25,000
23-	245	Interim HealthCare of Wisconsin (Country Nurses Buyout)	In-Home Supports	Adult	21.75-23.75	per	hour	21.75-23.75	per	hour	#DIV/0!	10,000
23-	246	International Institute for Restorative Practices	Restorative Justice Training	Juvenile	16,000.00	per	Training	16,000.00	per	Training	0.0%	32,000
23-	247	JCB at your Service, LLC	Home Modification	Child	5,500.00	per	time	5,500.00	per	time	0.0%	5,500
23-	248	Jean Lynch	IV-E Legal/JET	Child	85.00	per	hour	85.00	per	hour	0.0%	n/a
23-	249	Jefferson County Health Dept	CSP Nursing	MH	0.00	per	hour	0.00	per	hour	#DIV/0!	56,000
23-	249	Jefferson County Health Dept	Space Charges	n/a	-72,942.00	per	month	-58,000.00	per	month	-20.5%	-58,000
23-	250	Jefferson County Health Dept - JRW Region Jefferson Only	CCS Regional Service Array	CCS	48.80	per	hour	48.80	per	hour	0.0%	5,000
23-	251	Jefferson Memory Care NOP	Adult Alt Care	Eld	4,400.00	per	month	4,400.00	per	month	0.0%	42,000
23-	252	Jensen Therapy, LLC - JRW Region (Jefferson not using)	CCS Regional Service Array	CCS	128.00	per	hour	128.00	per	hour	0.0%	n/a
23-	253	Jill Vento	IV-E Legal/JET	Child	85.00	per	hour	85.00	per	hour	0.0%	n/a
23-	254	Johnstone Consulting, LLC	Training Program	Staff	0.00	per	hour	0.00	per	hour	#DIV/0!	40,000
23-	255	Journey Mental Health (Bay Side Care Center)	Respite Care	Adult	525.00	per	day	525.00	per	day	0.0%	60,000
23-	256	Just Like Home NOP	Adult Alt Care	MH	4,600.00	per	month	4,600.00	per	month	0.0%	55,200
23-	257	Justin & Sabrina Murphy	Foster Care	Child	1,000.00	per	month	1,000.00	per	month	0.0%	13,000
23-	258	Juvenile Assessment and Treatment Center, LLC	Mental Health	child	450-1200	per	month	450-1200	per	month	#DIV/0!	15,000
23-	259	Karen Reimer	IV-E Legal/JET	Child	85.00	per	hour	85.00	per	hour	0.0%	n/a
23-	260	Kettle Moraine YMCA, Inc.Young Mens Christian Association	Respite Care	Child	165.00	per	week	165.00	per	week	0.0%	1,650
23-	261	Kid's Palace L.L.C.	Day Care	Child	150.00	per	hour	150.00	per	hour	0.0%	7,825

2023 Provider Contracts (10/05/2022)

Contract Number	Provider	Service	Target	2022			2023			Totals	
23-262	Kimberly & Anthony Peters	Foster Care	Child	1,000.00	per	month	1,000.00	per	month	0.0%	22,000
23-263	Kohlenberg, Cary J MD SC	Psychiatric Evaluations	MH	450.00	per	eval	450.00	per	eval	0.0%	11,000
23-264	Kowalske Kitchen & Bath dba Kowalske Carpet & Tile, Inc.	Home Modification	Child	32,750.00	per	item	32,750.00	per	item	0.0%	32,750
23-265	Lad Lake - (Summer Camp)	Respite Care/Child Alt Care	Child	90,000.00	per	year	90,000.00	per	year	0.0%	35,000
23-266	Lad Lake - JRW Region - (Jefferson County not using)	CCS Regional Service Array	CCS	37-110	per	hour	37-110	per	hour	#DIV/0!	n/a
23-267	Lake Country Sales & Remodeling, Inc.	Home Modification	Child	13,578.51	per	item	13,578.51	per	item	0.0%	13,579
23-268	Lake Mills Independent Living	Supervised Apt.	CMI	1,500.00	per	month	1,500.00	per	month	0.0%	17,676
23-269	Lakeside Counseling - JRW Region (Jefferson County not using)	CCS Regional Service Array	CCS	119.28	per	hour	119.28	per	hour	0.0%	0.00
23-270	LAMAR	ADRC Advertising	Eld	varies	per	contract	varies	per	contract	#DIV/0!	16,860
23-271	Lavigne's Bus Lines	Transportation	various	various	per	trip	various	per	trip	#DIV/0!	2,000
23-272	Lemke Fence	Home Modifications	Child	11,500.00	per	item	11,500.00	per	item	0.0%	11,500
23-273	Lifestriders, Inc	Therapy Services	Child	390.00	per	session	390.00	per	session	0.0%	100,000
23-274	Little Dumplings, LLC	Respite Care	Child	1,471.00	per	year	1,471.00	per	year	0.0%	50,000
23-275	Little Eagles Childcare & Preschool	Respite	Child	8.40	per	unit	8.40	per	unit	0.0%	50,000
23-276	Lori and Dan O'Brien	Foster Care	Child	2,466.00	per	month	2,466.00	per	month	0.0%	28,000
23-277	LTDK LLC - Turner, Liz - CCS - JRW Region (Jefferson Only)	CCS Regional Service Array	CCS	53.06	per	hour	53.06	per	hour	0.0%	90,000
23-278	Luchetta, Tracy	Psychological	Child	150.00	per	hour	150.00	per	hour	0.0%	14,000
23-279	Lutheran Social Services	Respite/Aspen/IHSS	various	77.25-173.46	per	hour	77.25-173.46	per	hour	#DIV/0!	50,000
23-279	Lutheran Social Services**	Child Alt Care	Child	2259.70-3603	per	month	2259.70-3603	per	month	#DIV/0!	125,000
23-280	Lutheran Social Services - JRW Region	CCS Regional Service Array	CCS	125.77	per	hour	125.77	per	hour	0.0%	10,000
23-281	Lynette M. Studer	CSP Training & Consulting	MH	125.00	per	hour	125.00	per	hour	0.0%	18,000

2023 Provider Contracts (10/05/2022)

Contract Number		Provider	Service	Target	2022			2023			Totals	
23-	282	Madison Area Music Therapy - Danielle Christian	Counseling	Child	128.00	per	session	128.00	per	session	0.0%	40,000
23-	283	Manitowoc County Human Services	Early Intervetion	Child	20.59	per	unit	20.59	per	unit	0.0%	-3,295
23-	284	Mansion Hill Psychological Services, LLC	Psychosexual Evaluation	various	2,000.00	per	Eval	2,000.00	per	Eval	0.0%	6,000
23-	285	Marcey Care AFH LLC - NOP	Adult Alt Care	MH	3,599.00	per	month	3,599.00	per	month	0.0%	43,188
23-	286	Marcus, Jeffrey A. MD	Psychiatric	various	160.00	per	hour	160.00	per	hour	0.0%	50,000
23-	287	Marsh Country Health Alliance (Clearview LT Care)	Placement Holding	MH	24,139.00	per	year	24,139.00	per	year	0.0%	24,139
23-	288	Mary Linsmeier Schools, Inc	Respite Care	Child	27.00	per	day	27.00	per	day	0.0%	972
23-	289	Matt Talbot Recovery Services, Inc. (Horizon Healthcare, Inc. - replaces Genesis 151)	AODA Detox Service	Adult	319.00	per	day	319.00	per	day	0.0%	n/a
23-	290	Mediation & Collaborative Law Center, LLC	GAL	various	100.00	per	hour	100.00	per	hour	0.0%	n/a
23-	291	Meriter Hospital, Inc.	IP Psyc Hosp	MH	0.00	per	day	0.00	per	day	#DIV/0!	n/a
23-	292	Meta House, Inc.	AODA Res Service	Adult	265.00	per	day	265.00	per	day	0.0%	75,000
23-	293	Meyer's Miracle Meadows, LLC	Respite Care	Child	551.25	per	day	551.25	per	day	0.0%	26,460
23-	294	MG Home Care LLC	Home Daily Care	Del	1,700.00	per	year	1,700.00	per	year	0.0%	8,500
23-	295	Michelle & David Vasquez	Foster Care	child	1,646.00	per	month	1,646.00	per	month	0.0%	26,000
23-	296	Milwaukee Behavioral Health, LLC dba Granite Hills Hospital	Inpatient Services	MH	1,500.00	per	day	1,500.00	per	day	0.0%	n/a
23-	297	Mind & Heart, LLC	APNP	MH	90.00	per	hour	90.00	per	hour	0.0%	100,000
23-	298	Moving On, LLC JRW Region	CCS Regional Service Array	CCS	137.00	per	hour	137.00	per	hour	0.0%	10,000
23-	299	Music Speaks, LLC - JRW Region	CCS Regional Service Array	CCS	103.32	per	hour	103.32	per	hour	0.0%	10,000
23-	300	Music Therapy Services of Waukesha County, LLC	Therapy	Child	28.00	per	session	28.00	per	session	0.0%	10,000
23-	301	Mystic Creek, LLC	Adult Alternate Care	Adult	345.00	per	day	345.00	per	day	0.0%	37,950
23-	302	NAMI Southeast Wisconsin	Peer Support	CRS/CSP	25.50	per	hour	25.50	per	hour	0.0%	n/a

2023 Provider Contracts (10/05/2022)

Contract Number		Provider	Service	Target	2022		2023		Totals	
23-303		Nancy Koltanowski	Foster Care	Child	460-688	per month	460-688	per month	#DIV/0!	9,000
23-304		National Council for Behavioral Health	Consulting	MH	2,083.33	per year	2,083.33	per year	0.0%	25,000
23-305		National Seating & Mobility	Adaptive Aids	Child	U & C	per item	U & C	per item	#DIV/0!	n/a
23-306		New Beginnings APFV, Inc.	Intervention	Adult	1,666.67	per year	1,666.67	per year	0.0%	20,000
23-307		New Leaf Family Support LLC	Parent Coach	Child	40.00	per hour	40.00	per hour	0.0%	10,000
23-308		New Leaf Sober Living, LLC - NOP	AODA Residential	MH	525.00	per month	525.00	per month	0.0%	6,300
23-309		Norris Inc.**	Child Alt Care	Child	197.55-378.97	per day	197.55-378.97	per day	#DIV/0!	89,500
23-310		North American Mechanical Inc. (NAMI)	Boiler Preventative Maintenance	Maint	3,960.00	per year	3,960.00	per year	0.0%	3,960
23-311		North Central Safety Services, LLC	Transportation	MH	100.00	per hour	100.00	per hour	0.0%	100,000
23-312		Northwest Passage **	Child Alt Care	MH	378.97	per day	378.97	per day	0.0%	20,000
23-313		Nova Counseling Services, Inc	AODA Residential	AODA	88.26-166.	per day	213.22	per day	#DIV/0!	50,000
23-314		Nurturing Ways, LLC	Reflective Supervision	B-3	25.00	per unit	25.00	per unit	0.0%	10,000
23-315		Oak Ridge Counseling Services - JRW Region	CCS Regional Service Array	CCS	51.48-112.27	per hour	51.48-112.27	per hour	#DIV/0!	10,000
23-316		Oconomowoc Dev Trng Cnt - Genesee Lake School	Child Alt Care/Respite	Child	235-472.63	per day	235-472.63	per day	#DIV/0!	20,000
23-317		Opportunities, Inc.	Corp Guardian/HOPE Clients	various	225.00	per month	225.00	per month	0.0%	80,000
23-317		Opportunities, Inc.	WDC Space Rent	n/a	-1,137.50	per month	-1,183.00	per month	4.0%	-14,196
23-318		Orion Family Services	Counseling	various	78.28	per hour	78.28	per hour	0.0%	50,000
23-319		Orion Family Services - JRW Region	CCS Regional Service Array	CCS	64.58-87.72	per hour	64.58-87.72	per hour	#DIV/0!	130,000
23-320		Parachute Partnerships, LLC	Consumer Education and Training	Child	22.50	per unit	22.50	per unit	0.0%	10,000
23-321		Paragon	Respite/SHC	SED/DD	0.00	per Hour	0.00	per Hour	#DIV/0!	50,000
23-321		Paragon	Transportation	SED/DD	13.75-24.00	per trip	13.75-24.00	per trip	#DIV/0!	4,000

2023 Provider Contracts (10/05/2022)

Contract Number		Provider	Service	Target	2022			2023			Totals	
23-	321	Paragon	Daily Living Skills	SED/DD	17.00	per	hour	17.00	per	hour	0.0%	300
23-	322	Pasqua Phase II, LLC dba LearningRx-Milwaukee/Brookfield	Counseling & Therapeutic Services	Child	13,000.00	per	year	13,000.00	per	year	0.0%	15,000
23-	323	Pathways Counseling Center	Assessment	Child	800.00	per	assess	800.00	per	assess	0.0%	n/a
23-	324	Perkins Law Office	IV-E Legal/JET	Child	85.00	per	hour	85.00	per	hour	0.0%	n/a
23-	325	Phantom Lake YMCA Camp	Respite Care	Child	1,580.00	per	session	1,580.00	per	session	0.0%	1,580
23-	326	PIE - Professional Interpreting Enterprise	ASL Interpreter	various	80-105	per	hour	80-105	per	hour	#DIV/0!	5,000
23-	327	Pillar and Vine** - NOP	Child Alt Care	Child	3,535.61	per	month	3,535.61	per	month	0.0%	42,427
23-	328	Pine Valley Residential - NOP	Independent Living	MH	0.00	per	month	0.00	per	month	#DIV/0!	n/a
23-	329	PKM Clinical Solutions - JRW Region (Jefferson not using)	CCS Regional Service Array	CCS	158.00	per	hour	158.00	per	hour	0.0%	n/a
23-	330	Plum, Henry	Legal Assistance	Child	200.00	per	hour	200.00	per	hour	0.0%	150,800
23-	331	Portage Co. Detention Center**	Juv Detention	Child	150.00	per	day	150.00	per	day	0.0%	n/a
23-	332	Positive Alternatives, Inc.** NOP	Child Alt Care	Child	245.14	per	day	245.14	per	day	0.0%	89,476
23-	333	Prentice House **	Child Alt Care	Child	235.00	per	day	235.00	per	day	0.0%	85,775
23-	334	Productive Living Systems, Inc. - NOP	Adult Alt Care	Adult	192.15	per	day	192.15	per	day	0.0%	9,992
23-	335	Professional Services Group, Inc.	Mentoring, In-Home Safety, Electronic Monitoring	Parents	50.00	per	hour	50.00	per	hour	0.0%	9,000
23-	336	Professional Services Group/Community Impact Program-JRW Region	CCS Regional Service Array	CCS	\$18.68 - \$200	per	hour	\$18.68 - \$200	per	hour	#DIV/0!	800,000
23-	337	Psychological Assessment Services, LLC	Psychological	MH	200.00	per	hour	200.00	per	hour	0.0%	5,000
23-	338	R Family Care Services, LLC	Respite Care	Child	9.45	per	hour	9.45	per	hour	0.0%	40,000
23-	339	R Family Care Services, LLC - JRW Region	CCS Regional Service Array	CCS	0.00	per	hour	51.38-114.58	per	hour	#DIV/0!	10,000
23-	340	R.B.3 Inc. - WAITING	Home Modifications	Child	150.00	per	item	150.00	per	item	0.0%	11,900
23-	341	Rawhide, Inc.**	Child Alt Care	child	472.63	per	day	472.63	per	day	0.0%	n/a

2023 Provider Contracts (10/05/2022)

Contract Number		Provider	Service	Target	2022			2023			Totals	
23-	342	Rawski Forensic Psychiatry, LLC	Psychiatric	MH	160.00	per	hour	160.00	per	hour	0.0%	30,000
23-	343	Responsive Solutions, Inc Waiting	Home Modification Assessment	Child	71.00	per	hour	71.00	per	hour	0.0%	710
23-	344	Rest Assure Family Home, LLC	Respite Care	Child	551.25	per	day	551.25	per	day	0.0%	12,500
23-	345	Restoring Balance Counseling, LLC - JRW Region	CCS Regional Service Array	CCS	70.00	per	hour	70.00	per	hour	0.0%	15,000
23-	346	Revive Youth and Family Services** - NOP	Child Alt Care	Child	240.38	per	day	240.38	per	day	0.0%	45,432
23-	347	Riverview AFH LLC - NOP	Adult Alt Care	Adult	361.64	per	daily	361.64	per	daily	0.0%	46,652
23-	348	Rock County Human Services** (Includes Harper's)	Secure Juv Det	Child	170.00	per	day	170.00	per	day	0.0%	130,000
23-	348	Rock County-Harpers Place (not a separate contract)	Crisis Stabilization	MH	350.00	per	day	350.00	per	day	0.0%	40,000
23-	349	Rock Valley Community Programs, dba Compass Behavioral Health Clinic-JRW Region (Jefferson not	CCS Regional Service Array	CCS	108. - 260.	per	hour	108. - 260.	per	hour	#DIV/0!	n/a
23-	350	Rogers Memorial Hospital**	IP Psyc Hosp	MH	1,557.00	per	day	1,557.00	per	day	0.0%	n/a
23-	351	S and J Home Care LLC dba BrightStar Care	PC & SHC	various	25-42	per	hour	25-42	per	hour	#DIV/0!	3,000
23-	352	Safe Community Coalition of Madison and Dane County	Peer Support & Recovery Coachin	MH	55.88	per	hour	55.88	per	hour	0.0%	22,352
23-	353	Safe Community Coalition of Madison and Dane County - JRW Region	CCS Regional Service Array	CCS	55.88	per	hour	55.88	per	hour	0.0%	30,000
23-	354	SBH - Madison LLC, dba Miramont Behavioral Health	Inpatient Services	MH	1,212.00	per	day	1,212.00	per	day	0.0%	n/a
23-	355	Secured Living, LLC	Adult Alt Care	MH	2,707.08	per	month	2,707.08	per	month	0.0%	32,485
23-	356	Seniors on the GO! Taxi Service Inc.	Transportation	Adults & Elderly	65.00	per	trip	65.00	per	trip	0.0%	2,000
23-	357	Siemens	Fire Alarm Testing	All	2,916.00	per	month	3,000.00	per	month	2.9%	36,000
23-	358	Silverado North Shore, LLC	Adult Alternate Care	Adults & Elderly	350.00	per	day	350.00	per	day	0.0%	10,500
23-	359	Simmons Fence and Specialty Products, LLC - WAITING	Home Modification	Child	16,945.00	per	time	16,945.00	per	time	0.0%	16,945
23-	360	Simply Lesia, LLC - NOP	Child Alt Care	Child	274.00	per	day	274.00	per	day	0.0%	25,000
23-	361	SSM Healthcare of WI (St. Mary's Hospital)	IP Psyc Hosp	MH	0.00	per	day	0.00	per	day	#DIV/0!	n/a

2023 Provider Contracts (10/05/2022)

Contract Number		Provider	Service	Target	2022			2023			Totals	
23-	362	St. Coletta of Wisconsin, Inc.	Transportation	various	1.75	per	mile	1.75	per	mile	0.0%	4,000
23-	363	St. Elizabeth	Inpatient Services	various	1,100.00	per	day	1,100.00	per	day	0.0%	n/a
23-	364	Stangler, Nicole - WAITING - NOP	Foster Care	Child	1,600.00	per	month	1,600.00	per	month	0.0%	19,200
23-	365	State of Wisconsin-DWD	WDC Space Rent	n/a	-1,775.53	per	month	-1,806.60	per	month	1.7%	-21,679
23-	366	Stateline Mental Health Services, SC - JRW Region (Jefferson not using)	CCS Regional Service Array	CCS	128.56	per	hour	128.56	per	hour	0.0%	n/a
23-	367	Stay at Home Specialists, Inc.	Home Modification	various	39,747.41	per	modification	39,747.41	per	modification	0.0%	39,747
23-	368	Stein Counseling & Consulting Services, Ltd	Supervision	Adult	49.35	per	hour	49.35	per	hour	0.0%	800
23-	369	Steven J. Braam PhD	Psychological	MH	150.00	per	hour	150.00	per	hour	0.0%	20,000
23-	370	Steven Spear	IV-E Legal/JET	Child	85.00	per	hour	85.00	per	hour	0.0%	n/a
23-	371	Stoughton Hospital	IP Psyc Hosp	MH	0.00	per	day	0.00	per	day	#DIV/0!	n/a
23-	372	SWITS	Interpreting	various	45-90	per	hour	45-90	per	hour	#DIV/0!	n/a
23-	373	Taylor Psychiatric Services-Taylor, Leslie PhD	Psychiatric	MH	150.00	per	hour	150.00	per	hour	0.0%	14,000
23-	374	TCM Development LLC	Respite Care	Child	9.45/551.25	per	unit/overnight	9.45/551.25	per	unit/overnight	#DIV/0!	32,000
23-	375	Teletech System (RoboKiller)	Technology Software	various	585.00	per	month	585.00	per	month	0.0%	7,020
23-	376	Tellurian, Inc. - Med Detox - ARP	Detoxification	AODA	598.00	per	day	598.00	per	day	0.0%	15,000
23-	376	Tellurian, Inc. - Med Detox - Dane	Detoxification	AODA	525.00	per	day	525.00	per	day	0.0%	80,000
23-	377	Terri Schanen - Lessons In Harmony	Counseling & Therapeutic Services	Child	94.00	per	session	94.00	per	session	0.0%	3,500
23-	378	Terri Schanen - Lessons In Harmony - JRW Region	CCS Regional Service Array	CCS	66.19	per	hour	66.19	per	hour	0.0%	140,000
23-	379	The Arc of Fond du Lac Inc	Respite Care	Child	83.00	per	day	83.00	per	day	0.0%	2,988
23-	380	The Bees Knees	Respite Care	Child	150.00	per	session	150.00	per	session	0.0%	7,800

2023 Provider Contracts (10/05/2022)

Contract Number		Provider	Service	Target	2022			2023			Totals	
23-	381	The Fence Company, LLC - WAITING	Home Modification	Child	23,200.00	per	item	23,200.00	per	item	0.0%	23,200
23-	382	The Foster Lane, LLC - JRW Region (Jefferson not using)	CCS Regional Service Array	CCS	103.00	per	hour	103.00	per	hour	0.0%	n/a
23-	383	The Manor Adult Family Home - NOP	Adult Alt Care	Adult	3,000.00	per	month	3,000.00	per	month	0.0%	36,000
23-	384	The Mooring House Inc. - Apricity	AODA Res Service	MH	201.04-215	per	day	201.04-215	per	day	#DIV/0!	200,000
23-	385	The Parenting Network	Parenting Class	Parents	45.00	per	hour	45.00	per	hour	0.0%	500
23-	386	The Psychology Center	Psychological Evaluations	child	200.00	per	hour	200.00	per	hour	0.0%	50,000
23-	387	The Richardson School, LLC	Respite	Child	110.00	per	hour	110.00	per	hour	0.0%	5,000
23-	388	The Willows Counseling and EMDR Center - JRW Region (Jefferson not using)	CCS Regional Service Array	CCS	120.84	per	hour	120.84	per	hour	0.0%	n/a
23-	389	Three Gaits, Inc.	Therapeutic Services	Child	330.00	per	session	330.00	per	session	0.0%	330
23-	390	Thrive Treatment Services LLC** - NOP	Child Alt Care	child	3,735.61	per	month	3,735.61	per	month	0.0%	44,827
23-	391	TigerConnect	Texting Software	various	8,200.00	per	term	8,200.00	per	term	0.0%	3,600
23-	392	Timberwood Lodge, LLC dba Timberwood Lodge Lake Mills	Adult Alt Care	Adults & Elderly	150.00	per	day	150.00	per	day	0.0%	33,300
23-	393	TKO Enterprises, LLC	Respite Care	Child	302.40	per	day	302.40	per	day	0.0%	20,000
23-	394	TLC Staffing, LLC	SHC	various	\$18-\$24	per	hour	\$26-\$27	per	hour	#DIV/0!	50,000
23-	395	Tomorrow's Children, Inc.** - NOP	Child Alt. Care	Child	472.63	per	day	472.63	per	day	0.0%	172,510
23-	396	Total Care Group	Adult Alternate Care	MH	225.00	per	day	225.00	per	day	0.0%	82,125
23-	397	Total Senior Solutions, LLC d/b/a Caring Angels	Personal Home Care	Adults & Elderly	19.00	per	hour	19.00	per	hour	0.0%	5,000
23-	398	Transcend Adult Family Home	Adult Alternate Care	MH	3,386.00	per	month	3,386.00	per	month	0.0%	162,528
23-	399	Transitions at Home, Inc.	In-Home Supports	Adults & Elderly	\$22-\$27	per	hour	\$22-\$27	per	hour	#DIV/0!	10,000
23-	400	Trempealeau County Health Care Center - NOP	Adult Alternate Care	MH	242.62-365.00	per	day	242.62-365.00	per	day	#DIV/0!	140,381

2023 Provider Contracts (10/05/2022)

Contract Number		Provider	Service	Target	2022			2023			Totals	
23-	401	True Comfort Home Care LLC	SHC, PC, Respite, Transportation	Adults & Elderly	22.00	per	hour	22.00	per	hour	0.0%	25,000
23-	402	United Cerebral Palsy of Greater Dane County, Inc. - WAITING	Respite Care	Child	8.00	per	unit	8.00	per	unit	0.0%	3,840
23-	403	United Seating and Mobility, LLC dba Numotion - WAITING	Adaptive Aids - other	child	2,563.00	per	item	2,563.00	per	item	0.0%	2,563
23-	404	University Health Care, Inc.	Inpatient Services	MH	various	per	day	various	per	day	#DIV/0!	n/a
23-	405	Vision Forward Association, Inc.	Vision Support	Child	22.50	per	unit	22.50	per	unit	0.0%	3,960
23-	406	Vitality Youth Services, LLC - JRW Region (Jefferson not using)	CCS Regional Service Array	CCS	127.12	per	hour	127.12	per	hour	0.0%	n/a
23-	407	Washington Co DSS - Shelter Care**	Non-Secure Det	Child	131.00	per	day	131.00	per	day	0.0%	n/a
23-	408	Washington Co Sheriff - Detention**-send hard copy-do not use DocuSign	Secure Juv Det	Child	150.00	per	day	150.00	per	day	0.0%	n/a
23-	409	Watertown Health Department	In-Home Visits	Child	250.00	per	month	250.00	per	month	0.0%	3,000
23-	410	Waukesha County, Department of Health and Human Services	Inpatient Services	MH	888.00	per	day	888.00	per	day	0.0%	n/a
23-	411	Waystar	Clearinghouse	billing	0.00	per	month	0.00	per	month	#DIV/0!	n/a
23-	412	Wellpoint Care Network (Formerly SaintA)	Child Alt Care	CCS	419.86	per	day	419.86	per	day	0.0%	50,000
23-	413	Willow Creek Behavioral Health	Inpatient Services	MH	1,212.00	per	day	1,212.00	per	day	0.0%	n/a
23-	414	Willow Way Counseling Center, LLC - JRW Region (Jefferson County not using)	CCS Regional Service Array	CCS	100.60	per	hour	100.60	per	hour	0.0%	n/a
23-	415	Willow Winds Living LLC	Adult Alt Care	MH	4,401.00	per	month	4,401.00	per	month	0.0%	52,812
23-	416	Wisconsin Community Services, Inc.	Youth Crisis Stabilization	MH	475.00	per	hour	475.00	per	hour	0.0%	114,000
23-	417	Wisconsin Family Ties	WrapAround	Child	6,000.00	per	year	6,000.00	per	year	0.0%	6,000
23-	418	Wisconsin Illinois Senior Housing, LLC dba Wellington Place	Protective Placement/Respite	Adults & Elderly	5,613.00	per	year	5,613.00	per	year	0.0%	5,613
23-	419	Wisconsin Lutheran Child & Family Services, Inc.dba Christian Family Solutions, The Gardens of Hartford, CFS Home Care	Supportive Home Care & Crisis Response Respite	MH	\$25, \$43	per	hour	\$25, \$43	per	hour	#DIV/0!	4,000

2023 Provider Contracts (10/05/2022)

Contract Number		Provider	Service	Target	2022			2023			Totals	
23-420	420	Wishope Inc.	AODA Res Service	MH	600.00	per	month	600.00	per	month	0.0%	7,200
23-421	421	Witzigmann Foster Home	Foster Care	Child	1,500.00	per	month	1,500.00	per	month	0.0%	18,500
23-422	422	WMK LLC dba Mobility Works	Adaptive Aids - Vehicle	Child	2,000.00	per	item	2,000.00	per	item	0.0%	2,000
23-423	423	YMCA at Pabst Farms	Respite	Child	15-140	per	session	15-140	per	session	#DIV/0!	100,000
23-424	424	Youth Villages-Tennessee, Georgia	Child Alt Care	Child	615.00	per	day	615.00	per	day	0.0%	224,475
23-425	425	ZBM Inc.	Cleaning Services	varies	20-50	per	hour	20-50	per	hour	#DIV/0!	9,000
		**Rates not established for 2023 yet for all providers										
		Contracts with Jefferson County for Services-No Cost to us.										
		My Choice (Care Wisconsin)	various	Adult	various	per	service	various	per	service	#DIV/0!	n/a
		Inclusa (ContinuUs)	various	Adult	various	per	service	various	per	service	#DIV/0!	n/a

REPORT
TO THE HONORABLE MEMBERS OF THE JEFFERSON COUNTY
BOARD OF SUPERVISORS

The Jefferson County Planning and Zoning Committee, having considered petitions to amend the official zoning map of Jefferson County, filed for public hearing held on October 20, 2022, as required by law pursuant to Wisconsin Statutes, notice thereof having been given, and being duly advised of the wishes of the town boards and persons in the areas affected, hereby makes the following recommendations:

APPROVAL OF PETITIONS R4442A-22, R4443A-22, AND R4444A-22

DATED THIS 31ST DAY OF OCTOBER 2022

Blane Poulson, Secretary

THE PRIOR MONTH'S AMENDMENTS R4428A-22, R4429A-22, R4430A-22, R4431A-22, R4432A-22, R4433A-22, R4435A-22, R4436A-22, R4437A-22, R4438A-22, R4439A-22 AND R4440A-22 ARE EFFECTIVE UPON PASSAGE BY COUNTY BOARD, SUBJECT TO WIS. STATS. 59.69(5)

ORDINANCE NO. 2022- _____

Amending Official Zoning Map

WHEREAS, the Jefferson County Board of Supervisors has heretofore been petitioned to amend the official zoning map of Jefferson County, and

WHEREAS, Petitions R4442A-22, R4443A-22 and R4444A-22 were referred to the Jefferson County Planning and Zoning Committee for public hearing on October 20, 2022, and

WHEREAS, the proposed amendments have been given due consideration by the Board of Supervisors in open session,

NOW, THEREFORE, BE IT ORDAINED that the Jefferson County Board of Supervisors does amend the official zoning map of Jefferson County as follows:

FROM A-1, EXCLUSIVE AGRICULTURAL TO A-3, AGRICULTURAL/RURAL RESIDENTIAL

Rezone PIN 026-0616-2511-001 (1.422 ac) to create a new building site at the intersection of **Northey Rd & County Rd Z** in the Town of Sullivan. This is in accordance with Sec. 11.04(f)8 of the Jefferson County Zoning Ordinance. The action is conditioned upon recording of an affidavit acknowledging use of the last available A-3 zone for the property. It is further conditioned upon receipt by Zoning of a suitable soil test and filing of a plat of survey within one year of this decision. R4442A-22 – James & Karen Larson

Create a 1.75-ac building site from part of PIN 018-0713-2643-001 (24.471 ac) along **Conservation Road**, Town of Lake Mills. This is in accordance with Sec. 11.04(f)8 of the Jefferson County Zoning Ordinance. Rezoning is conditioned upon road access approval, receipt by Zoning of a suitable soil test, and approval and recording of a final certified survey map for the lot, including extraterritorial plat review if necessary. R4443A-22 – Cheryl Jarrett

FROM A-1, EXCLUSIVE AGRICULTURAL TO N, NATURAL RESOURCE

Create a 2.22-ac Natural Resource zone from part of PIN 018-0713-2643-001 (24.471 ac) adjacent to a proposed building site on **Conservation Rd**, Town of Lake Mills. This is in accordance with Sec. 11.04(f)12 of the Jefferson County Zoning Ordinance. Rezoning is conditioned upon approval and recording of a final certified survey map for the lot and recording of a minimum 20-foot-wide access easement to serve the lot. R4444A-22 – Cheryl Jarrett

The above zoning amendments shall be null and void and have no effect one year from the date of County Board approval unless all applicable conditions have been completed.

Referred By:
Planning and Zoning Committee

11-15-2022

REVIEWED: Corporation Counsel: JBW; Finance Director



RESOLUTION NO.

**Authorizing Entering into a Contract with Pictometry International Corp.
for Oblique and Aerial Imagery**

Executive Summary

Digital aerial photography funded by the Land Information Program has been a valuable tool for mapping, planning, zoning, land and water conservation, parks, public safety and other government functions throughout the County. Jefferson County contracted with Pictometry International Corporation in April and June of 2008 and Spring of 2018 to take oblique and overhead imagery county-wide. Contracting with Pictometry International Corporation for 2023 imagery would maintain continuity of GIS integration tools and other software programs and applications developed to access and utilize the historical oblique imagery. Based on the unique services provided by Pictometry International Corporation and the desire to maintain continuity there were no other proposals solicited for this project. Jefferson County is also partnering with local municipalities to offer increased coverage within their jurisdictions.

The Land Information Council met on July 21, 2022, and recommended funding a 2023 flight of Pictometry and aerial photography. In addition, acquiring Pictometry data and aerial photography is a project outline in the 2021 Land Information Plan and approved utilization of Land Information Funding. The Planning & Zoning Committee considered this resolution at its meeting on October 31, 2022, and recommended forwarding to the County Board for approval to contract with Pictometry International Corporation for oblique and overhead imagery in the spring of 2023.

WHEREAS, the Executive Summary is incorporated into this resolution, and

WHEREAS, oblique imagery of Jefferson County will provide information on land features and structures that can be used to update the county land use inventory for updating the County Comprehensive Plan as well as numerous other county and local governmental uses, and

WHEREAS, Pictometry imagery was contracted for in 2008 and 2018 through Pictometry International Corporation, and

WHEREAS, Pictometry International Corporation has developed integrated tools currently used by Jefferson County and continuing to contract with Pictometry International Corporation will allow Jefferson County to maintain continuity with GIS applications to access oblique imagery from 2008, and

WHEREAS, the Land Information Plan includes acquiring Pictometry and aerial imagery as a desired project, and

NOW, THEREFORE, BE IT RESOLVED that the Jefferson County Board of Supervisors does hereby authorize the County Administrator to enter into a contract with Pictometry International Corporation, to acquire new aerial and oblique imagery in the spring of 2023 at a


total cost of \$121,822.32 and for the County Administrator to enter into a Memorandum of Understanding with local municipalities who wish to partner with Jefferson County to receive higher resolution imagery throughout their municipality.

Fiscal Note: This project is included in the 2023 budget. The Wisconsin Land Information Program Grant for 2023 will fund \$70,000 of the project cost. The non-tax levy Land Information Program funded by a portion of the document recording fees in the Register of Deed's Office will fund the remaining amount of the project. The City of Lake Mills, Watertown and Whitewater will reimburse the County for the cost of higher resolution imagery throughout each City at a per square mile rate.

Fiscal Note: This resolution has no fiscal impact

Referred By:
Planning and Zoning Committee

11-15-2022

Reviewed: Corporation Counsel: JBW; Finance Director: 

APPOINTMENTS BY COUNTY ADMINISTRATOR

By virtue of the authority vested in me under Sections 59.18 (2)(b) of the Wisconsin Statutes, I respectfully request confirmation of the following appointment:

- a. Deborah Reinbold, ThriveED President/JCEDC Executive Director for an indeterminate term

AYES _____ NOES _____ ABSTAIN _____ ABSENT _____

By virtue of the authority vested in me under Sections 59.19(2)(c) of the Wisconsin Statutes, I respectfully request confirmation of the following appointments:

- a. Timothy Anhalt, Lake Mills, WI, to the Veterans Service Commission for a three-year term ending December 8, 2025
- b. Anthony Gulig, Fort Atkinson, WI, to the Bridges Library System Board for a three-year term ending December 31, 2025
- c. Richard Moulding, Johnson Creek, WI, to the Jefferson County Library Board for a three-year term ending December 31, 2025
- d. Anthony Gulig, Fort Atkinson, WI, to the Jefferson County Library Board for a three-year term ending December 31, 2025
- e. Brian Henning, Waterloo, WI, to the Jefferson County Library Board for a three-year term ending December 31, 2025

AYES _____ NOES _____ ABSTAIN _____ ABSENT _____