

## Why the Need to Address IOH?

- Equipment increasing in size and weight
- Update statutory definition of IOH
- Need to maintain roads – balancing agriculture's need and town/county responsibility
- Provide safe roads and bridges for all
- Maintain Local Control

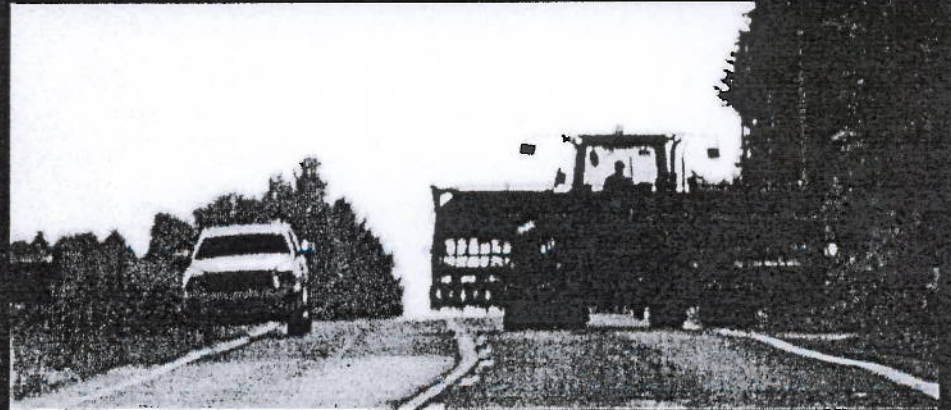
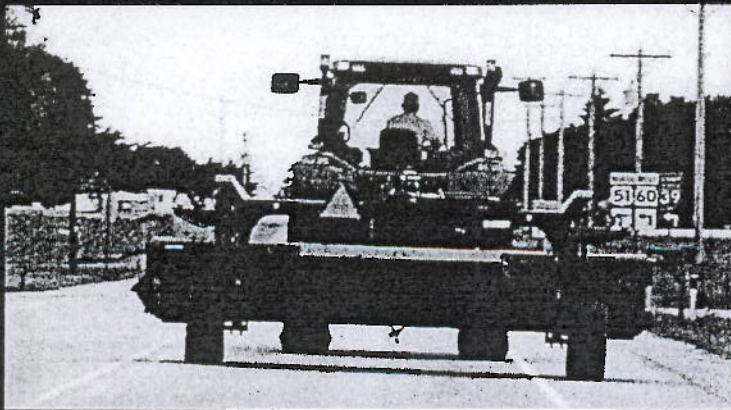
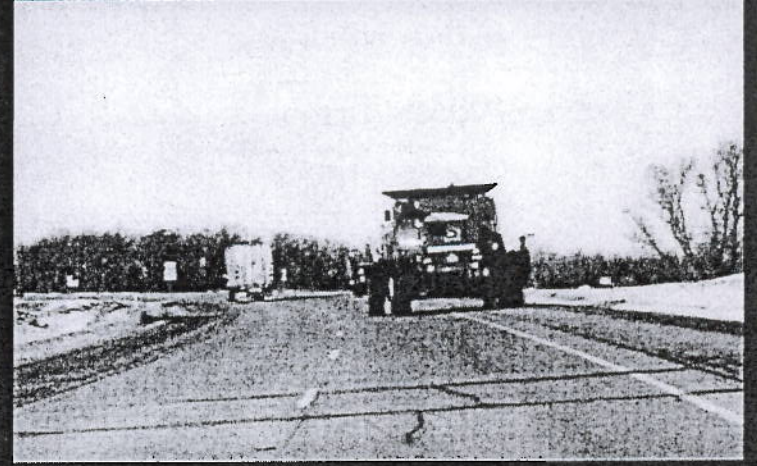
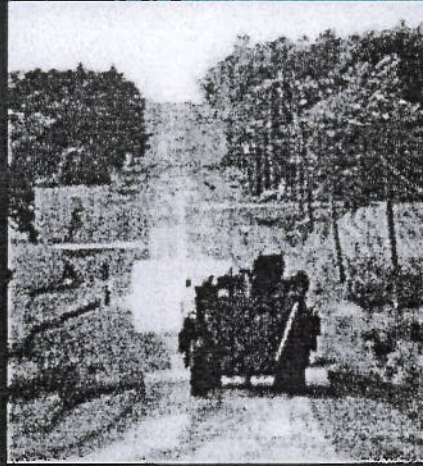
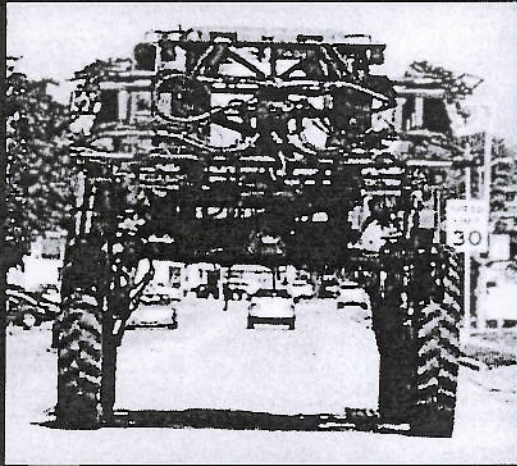
## Wisconsin Act 377

- IOH Study group Formed with Broad based stakeholder representation
- IoH Study group provided recommendations with input from town hall meetings
- Legislation leadership by Senator Petrowski and Representative Ripp
- SB509 included discussion by numerous agricultural organizations and agencies and local government
- Signed by Governor Walker on April 23, 2014

## What actually Changed?

- Definitions for IOH and Ag CMV
- Size and Weight Limits
- Disclosure in Sales
- Lighting and Marking Requirements
- Rules of the Road
- Local Options and No Fee Permits

# Implement of Husbandry (IoH)





# Weight – IoH and Ag CMV

Weights GENERALLY increased by 15% for IoH and Ag CMV over the Federal Bridge Formula (FBF).

Maximum GVW 92,000 lbs

Maximum Axle weight 23,000 lbs.

New IoH/Ag CMV Weight Table reflects necessary number of axles and axle spacing

New IoH/Ag CMV weight allowances DO NOT apply on the Interstate Highway System

Effective- 04-23-14



# COUNTY HIGHWAYS

- Built for normal and historic use.
- May have substandard roadway geometrics, pavement section, pavement width, vertical and horizontal issues with sight lines and shoulder restrictions.
- May have bridge or culvert weight restrictions
- May have limited roadway access
- May have seasonal weight restrictions

# COUNTY OPTIONS

## ACT 377 – Local Government Options

Below is a summary of options local governments may take to govern loH and AG CMV operation on their roads. Note:

Category B must be given route – but may include conditions for operation.

Permits may not be given to exceed limits on posted bridges.

Options		Action	Communication	Permit	Result
A	Posting Approach (§349.16)	Post roads limiting weight below 23K/92K/Wt Table	No publication required – but roads must be posted	Must respond to permit applications	Could post notice giving commodities/vehicles exemptions (e.g. milk trucks and Category B). §349.16 (3)
B	Total Opt Out §348.27 (19)5.a.	No weight or length limit on any jurisdiction road for loH or Ag CMVs	Must pass and post/publish ordinance or resolution. Also posted on DOT website.	No permits necessary	loH or Ag CMVs of any weight or length can run on roads subject to seasonal and special postings
C	Partial Opt Out I	Sets weight limit above 23K/92K/Wt Table on all roads under jurisdiction	Must pass and post/publish ordinance or resolution. Also posted on DOT website.	Must respond to permit applications	loH or Ag CMVs can run up to set limits without permit subject to seasonal and special postings
D	Partial Opt Out II §348.27 (19)5.c.	Designates roads for over-weight/over-length loH and Ag CMVs	Must pass and post/publish ordinance or resolution. Also posted on DOT website.	Must respond to permit applications	loH or Ag CMVs can run up to set limits on designated roads without permit subject to seasonal and special postings
E	Opt In §348.15 (9)(f)2.a.  State highways fall into this category	Pass ordinance requiring Category B and all loH/Ag CMVs to follow 23K/92K/Wt Table	Must pass and post/publish ordinance or resolution. Also posted on DOT website.  State Highway operate like this per 348.15 (9)(f)3	Must respond to permit applications	loH and Ag CMVs must apply for permit to exceed 23K/92K/Wt Table
F	Abides by Act 377	No special action taken – 23K/92K/Table governs loH and Ag CMVs – <u>except Category B</u> (no axle limit/ 92K GVW)	No publishing required	Must respond to permit applications	loH and Ag CMVs must apply for permit to exceed 23K/92K/Wt Table; Category B must apply for permit to exceed <u>92K GVW</u>

# PERMITS – FAQ's

- **How much will an IoH/Ag CMV permit cost?**

It is a no-fee permit. The bill specifically prohibits municipalities and counties from charging a fee for the IoH/Ag CMV permit. It also prohibits them from charging a fee for any study, investigation, or other review in connection with an application for the no-fee permit.

- **When do the new no-fee permits go into effect?**

While the new no-fee IoH/Ag CMV permit is now available, applications are not required to be made on the universal no-fee permit application form until January 1, 2015. Operators who have an IoH or Ag-CMV which exceeds the new weight and length limits are encouraged to contact their local road authority to discuss operation. A permit is required to operate on state highways over the new length and axle and gross vehicle weight limits

# LIGHTING & MARKING con't

- When do the lighting and marking requirement go into effect?

The lighting requirements for IoH exceeding 15 feet in width take effect November 1, 2015.