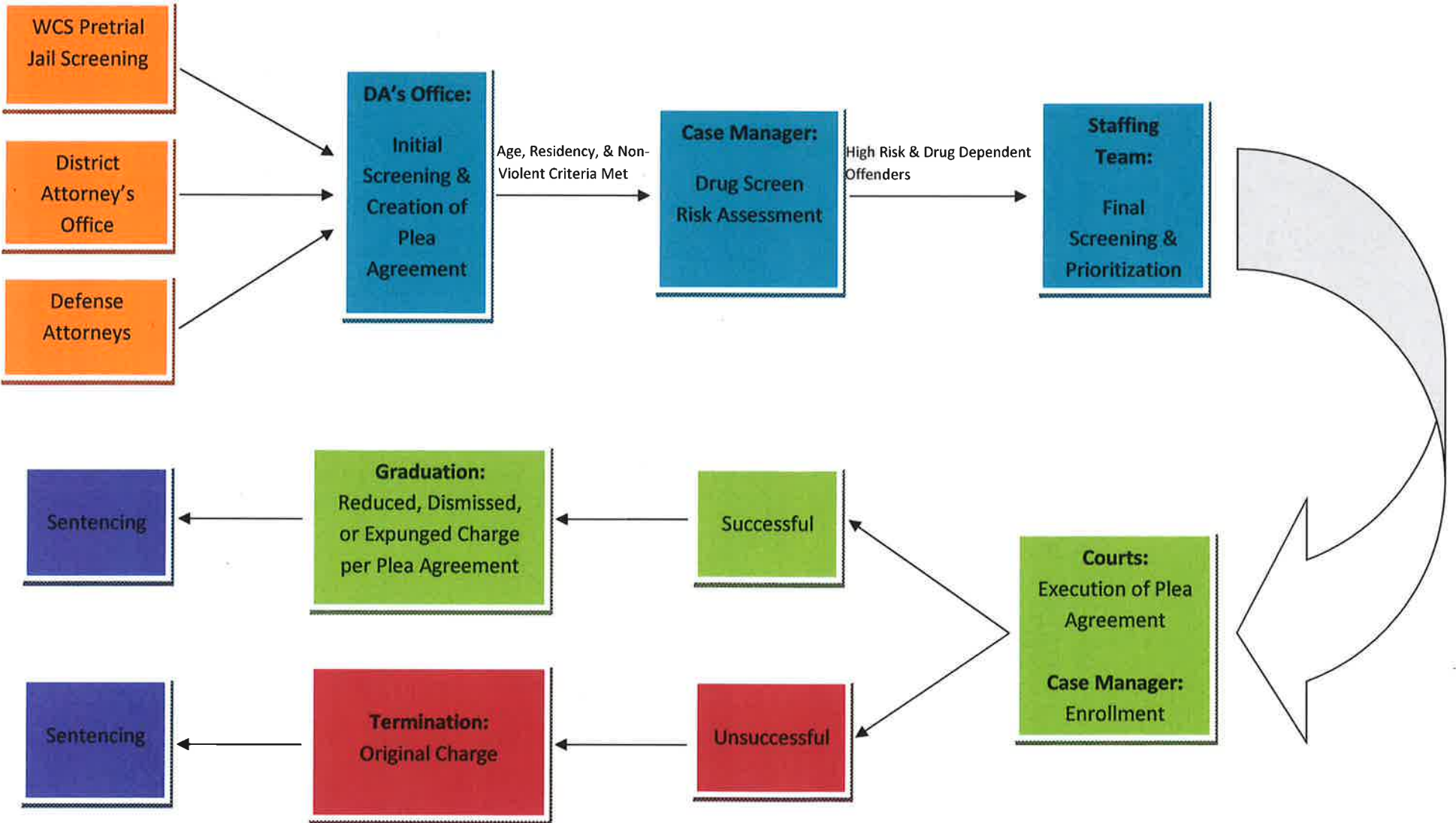


# WAUKESHA COUNTY DRUG TREATMENT COURT PROGRAM

## FLOW CHART: REFERRAL TO DISCHARGE

### Referral Sources



## WAUKESHA COUNTY DRUG COURT PHASE CHART

	Phase I	Phase II	Phase III	Phase IV
	120 Days	90 Days	90 Days	60 Days
Court Obligations	▶ Judicial status hearing every two weeks	▶ Judicial status hearing every two weeks	▶ Judicial status hearing once a month	▶ Judicial status hearing once a month
Supervision & Monitoring Requirements	<ul style="list-style-type: none"> <li>▶ Random drug testing three times per week</li> <li>▶ PBT's three times per week</li> <li>▶ Meet with case manager at least once a week</li> </ul>	<ul style="list-style-type: none"> <li>▶ Random drug testing at least twice per week</li> <li>▶ PBT's at least twice per week</li> <li>▶ Meet with case manager at least once every two weeks</li> </ul>	<ul style="list-style-type: none"> <li>▶ Random drug testing at least twice per week</li> <li>▶ PBT's at least twice per Week</li> <li>▶ Meet with case manager at least once every two weeks</li> </ul>	<ul style="list-style-type: none"> <li>▶ Random drug testing at least twice per week</li> <li>▶ PBT's at least twice per week</li> <li>▶ Meet with case manager at least once a month</li> </ul>
Treatment Requirements	<ul style="list-style-type: none"> <li>▶ Complete assessment and individualized treatment plan</li> <li>▶ Attend at least three self-help meetings per week</li> <li>▶ Obtain a sponsor within 30 days</li> </ul>	<ul style="list-style-type: none"> <li>▶ Attend treatment as identified in assessment</li> <li>▶ Attend at least three self-help meetings per week</li> </ul>	<ul style="list-style-type: none"> <li>▶ Attend treatment as identified in assessment</li> <li>▶ Attend at least two self-help meetings per week</li> </ul>	<ul style="list-style-type: none"> <li>▶ Develop aftercare treatment plan</li> <li>▶ Attend AODA recovery group 1 time/month</li> <li>▶ Attend two self-help meetings per week</li> </ul>
Other Requirements	▶ Determined on an individual, as-needed, basis	▶ Determined on an individual, as-needed, basis	▶ Determined on an individual, as-needed, basis	<ul style="list-style-type: none"> <li>▶ Pre-graduation conference and exit interview</li> <li>▶ Alumni program participation</li> </ul>

# Committee Meeting Sign-In Sheet

Committee/Board Name:

Date of Meeting:

Name (Please Print)	City or Township	Person/Firm Representing	Item # or General Comment
Brian Dykstra	State of WI	DOC	
Yelena Zepewell	Jefferson Co.	Corp. Counsel's office	
Carle Robinson		DOC	
Paul S. Milbrat	JCSO	JCSO	
Jim Sch		County Bd	
Su Hupp	P.A.		
Randy Kozhnick	Judge		
MIKE WALLACE	FOOT ATKINSON	FHC	
John David	City of Watertown	Mayor	
Lynn Forseth	Jefferson	JCLC	
Kathy Conley		JCHSD	
DALE LITZ	JEFFERSON	Chief Sheriff's Assoc.	
Blair Ward	JEFFERSON COUNTY	Corporation Counsel	
Ben wehmer		Administrator	
Mary Wither	OX	WCS	
Kristy Gusse		WCS	
DWANE SCOTT	JCSO	JAIL	
JEFF DE LA ROSA	SPD - JEFFERSON	SPD	