



Visitors looking to drop a fishing line will find multiple access points to the pond.

Photo courtesy of WCSWMB.

Closed Winnebago County Landfill Site **GETS NEW LIFE**

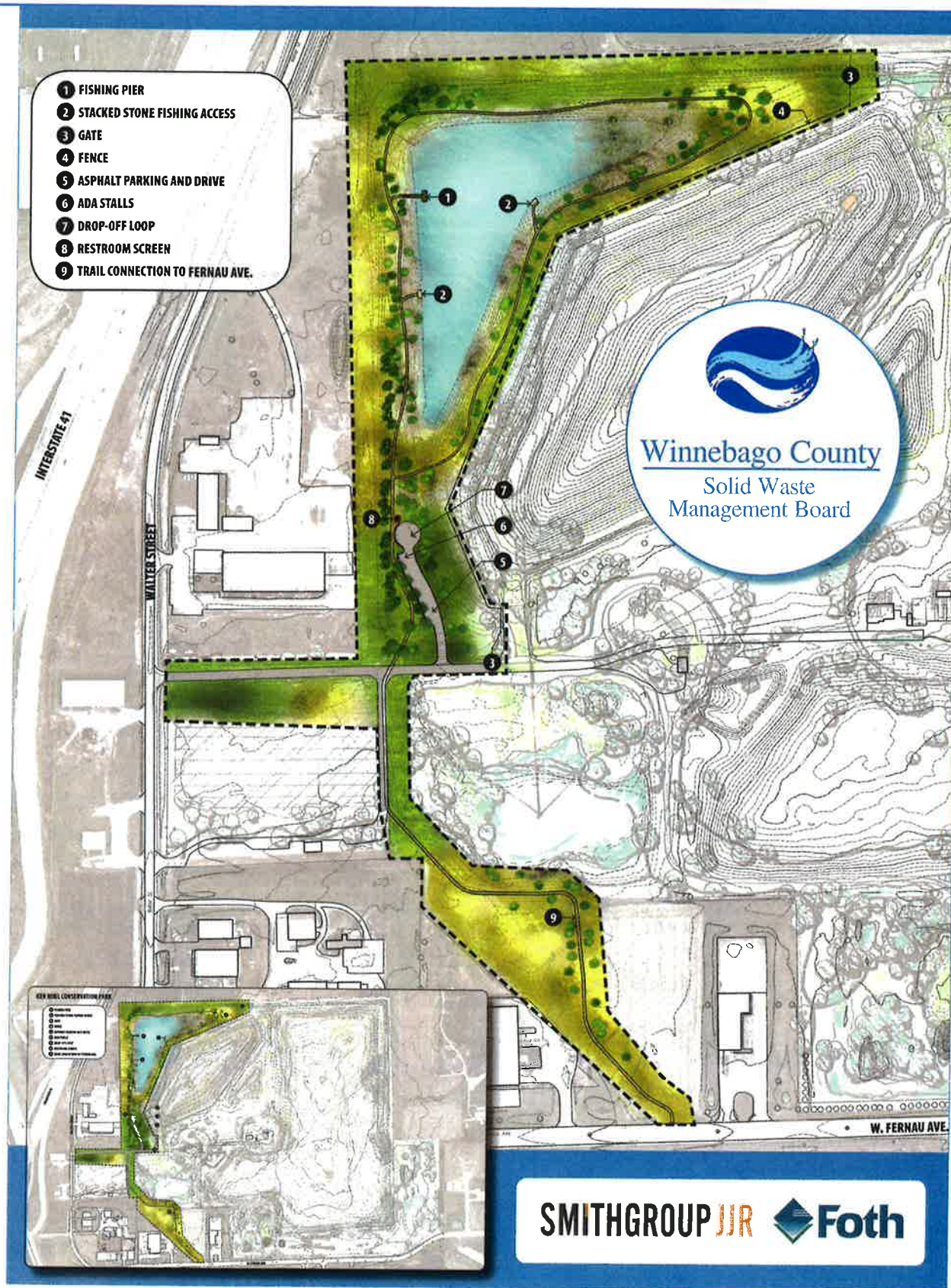
—David Albrecht, Winnebago County Board

Located along Interstate 41 on the north end of Oshkosh sits a 200 acre parcel of land that served as the Winnebago County Snell Road Landfill from 1968 to 1989. While considering options for end use planning, the Winnebago County Solid Waste Management Board (WCSWMB), caretakers of this site, recognized that the end of useful life of a landfill was not necessarily the end of the story. The site already had much going for it – interesting topography, established wildlife habitat, open green-space – and the WCSWMB envisioned improving upon that backdrop to build interactive educational and recreational experiences for the public.

Formal discussions for Snell Road Landfill end use planning began in 2012 when WCSWMB developed concepts that highlighted the site’s natural habitats, with addition of human interest features, like walking trails, education stations, and access to an 8-acre pond. WCSWMB Chairman Pat O’Brien explains, “Opening portions of the property to the public for education and recreation made perfect sense. We viewed this property as an asset and wanted to create a positive example of how to use a closed landfill site.”

Site specific master planning proved key to getting the project off of the ground. In 2015, WCSWMB hired Foth Infrastructure & Environmental, LLC

continues on page 12



Initial areas of development, including a walking trail, pond access, bike route connector trail, and parking lot are expected to be completed this spring.

Graphic courtesy of Foth.



WCSWMB Vice Chairman Ken Robl is surrounded by WCSWMB members, staff, and project coordinators during the dedication ceremony in October 2017.

Photo courtesy of Foth.

(Foth) with consultant SmithGroup JJR to develop site plans and conduct site surveys. Through 2016 and 2017, the Foth/SmithGroup JJR partnership brought WCSWMB's concepts to reality by developing a clear Master Plan that emphasized the following goals: provide educational opportunities that focus on solid waste and recycling programs; support community outdoor recreation programs; and use the project as a showcase example for a landfill end use plan that benefits the community. Winnebago County Parks Department also assisted WCSWMB to determine recreational needs for the community and provide future park operations and maintenance.

Naming the property was also important and WCSWMB had a particular honoree in mind. "Ken Robl is a long-standing WCSWMB member with lifetime dedication to environmentalism. We wanted to recognize Ken for his 35+ years of services on our Solid Waste Management Board and submitted a resolution to the county board recommending the property be named in his honor," Pat O'Brien said. The Winnebago County Board of Supervisors of-

ficially adopted the resolution naming the property the Ken Robl Conservation Park in December 2015.

The first phase of construction began in late 2017, with installation of a parking area, 1-mile walking trail, and improved access to the pond. Installation of additional native trees, interpretive signs, and a fully-accessible fishing pier are planned this spring. Visitors are invited to navigate the footpath where they will find educational stations – made of recycled content materials – featuring the following: the WCSWMB's mission, programs, and role within the community; key elements in landfill operations, maintenance, and end use planning; and the benefits of recycling. "Further development will be considered," Winnebago County Director of Solid Waste John Rabe said. "As of now the higher elevations are closed to the public; however, WCSWMB plans to continue to work with the Winnebago County Parks Department to evaluate community recreational needs." The Ken Robl Conservation Park is located at 3390 Walter Street in Oshkosh and is open during daylight hours from April - November.

Drug Collection Information from 2008-2017

Year	Controlled	Non-Controlled	Mix-Drug DEA	Total Pounds	Cost
2008	29.5	920		949.5	\$ 1,632.50
2009	30.5	847		877.5	\$ 2,085.40
2010	91	452		543	\$ 1,433.47
2011	478	686		1164	\$ 1,309.08
2012	40.25	1,200		1240.25	\$ 1,715.34
2013	0	1315	*1113	2428	\$ 2,791.78
2014	70.25	1,820		1890.25	\$ 2,130.72
2015	0	349		349	\$ 594.05
2016	113	349		462	\$ 302.65
2017	0	0	1167	1167	\$ -
2018 Spring			868.3	868.3	\$ -
2018 Fall					\$ -
Totals	852.5	7938	1113	11938.8	\$ 13,994.99

* Mix drugs that went to a witness burn.

2008-2009 - Jefferson County Sheriff disposed of drugs through his evidence program at the State lab.

2010-2014 - Veolia Environmental disposed of our non-controlled through the Clean Sweep Program

2010-2014 - All the controlled drugs were disposed of at witness burn in Illinois at a Veolia site.

Jefferson County Sheriff hosted the collection of drugs for the State and witnessed the burn.

2105-2016 - The Wisconsin Department of Justice took over the disposal of all drugs with

registered police departments in the State; as of this date they have collected over 110,000 pounds of drugs this doesn't include this pasted weekend's drug take-back.

Before the DOJ drug collections we had less than 100 police department participating and now we have over 274 participating police departments.

State DOJ Total Pounds for Mix-Drugs Collected

Year & Month	Total Pounds
May, 2015	39,783
September, 2015	44,698
April, 2016	64,247
October, 2016	58,729
April, 2017	66,830
October, 2017	60,257
April, 2018	63,541

398,085

April & October 2017 Wisconsin ranked third among the 48 states. California & Texas were first & second.

April 2018 we ranked third among the 48 states and first with law-enforcement participation.

California & Texas were first & second

The DOJ said that national wide for the October, 2017 912,305 pounds were collected

The DOJ also said that the City of Milwaukee collected 2,000 pounds in October.

Jefferson County took in 1,167 pound for October so I think Jefferson County has a very strong program for collecting drugs and with Johnson Creek Police Dept. on board we should be increasing that total.

Sharon Ehrhardt

To: Paul Milbrath (PaulM@jeffersoncountywi.gov); Dale Lutz (dlutz@jeffersonpd.com); Daniel Meyer (dmeyer@whitewater-wi.gov); Randy Johnson (RJohnson@CityofWatertown.org); police@waterloowi.us; Chief Gary Bleecker garyb@johnsoncreekwi.org; Chief Matuszewski (pmatuszewski@ci.lake-mills.wi.us); Neal Kolb (NKolb@whitewater-wi.gov); Don Hunter (DonH@jeffersoncountywi.gov); Jefferson Police Dept. lahauser@jeffersonwis.com; Jill Hoard (j.hoard@villageofpalmyra.com); Kenneth Pileggi - City of Jefferson Police Department (kpileggi@jeffersonpd.com); Davis, Lt. Jeff; Lt. Joe Szwec (jszwec@jeffersonpd.com); police@uww.edu (police@uww.edu); Rene Frier (RFrier@ci.lake-mills.wi.us); Burt, Jason R (burtj@uww.edu)

Cc: Emi Reiner; Craig Holler; Carol Quest RN BSN (cquest@ci.watertown.wi.us); Gail Scott; Solid Waste & Air Quality Committee; Matt Zangl; Sarah Higgins; Lindsey Schreiner; Larson, Jane H - DATCP; Amber Borchardt

Subject: FW: Fall 2018 Drug Take Back Date and Training Opportunity

Attachments: WIS-DOJ-15112_Drug Take Back Thank You_960x440_050918.pdf; OD Investigation and prosecution training.pdf; Drug Collection total 2008-2018.xls

I'm passing this long in case you didn't received this email from Danielle Long. Remember to sign up for the fall collection and order your drug boxes from Danielle.

This was again a great job by our Jefferson County law-enforcement and the states. I attached Jefferson County's drug collection information.

Thank you,
Sharon

From: Long, Danielle B. [<mailto:longdb@doj.state.wi.us>]
Sent: Wednesday, June 06, 2018 11:44 AM
Subject: Fall 2018 Drug Take Back Date and Training Opportunity

Good Morning,

I'd first like to thank all of you for your participation in the spring, 2018 Drug Take Back. Statewide, we collected **63,541 pounds** of unused medications! Once again we were #1 in the nation for law enforcement agency participation and #3 for pounds collected! Attached please find a graphic you are welcome to share.

Second, hot off the presses, I just learned that the **fall, 2018 Drug Take Back will be on Saturday, October 27th**. Whether you plan to host an event or need to turn over the drugs you collect in your drop box, **Monday, October 29th** will be the day to do so. More information to come.

Finally, the Department of Justice and the National Association of Attorneys General (NAAG) are hosting a Overdose Death Investigation and Prosecution training on June 26th at the Marquette University Law School. Please see the flyer (including registration information) attached. Registration is only \$25 and closes this Friday.

Thanks so much for all you do to make Drug Take Back in Wisconsin a success.

Danielle Basil Long
Opioid Initiatives Advisor
WI Department of Justice
(414) 403-4437

**DRUG TAKE
BACK DAY**

**THANK
YOU!**



**63,541 LBS. OF
DRUGS WERE COLLECTED!**

A message from Wisconsin Department of Justice, Brad Schimel,
Attorney General, and the Wisconsin Department of Health Services



Wisconsin
Department of Health Services

DOSE OF REALITY

PREVENT PRESCRIPTION PAINKILLER ABUSE IN WISCONSIN.

DoseOfRealityWI.gov

FROM ACCOUNTS FOR:	2018 ORIGINAL APPROP	1 TO TRANFRS ADJSTMTS	REVISED BUDGET	2018 ACTUALS	4 ENCUMBF	AVAILABL BUDGET	PCT USED
12902 Solid Waste Program							
12902 411100 General Property Taxes	-15000	0	-15000	-5000	0	-10000	33.30%
12902 451009 Deer Track Park Charges	-55000	0	-55000	0	0	-55000	0.00%
12902 458011 Public Solid Waste Charges	-5000	0	-5000	-3198	0	-1802	64.00%
12902 485100 Donations - Unrestricted	-6000	0	-6000	-2610	0	-3390	43.50%
12902 511210 Wages-Regular	25289	0	25289	8817.57	0	16471.43	34.90%
12902 511310 Wages-Sick Leave	0	0	0	375.67	0	-375.67	0.00%
12902 511320 Wages-Vacation Pay	0	0	0	188.64	0	-188.64	0.00%
12902 511330 Wages-Longevity Pay	132	0	132	0	0	132	0.00%
12902 511340 Wages-Holiday Pay	0	0	0	94.16	0	-94.16	0.00%
12902 511350 Wages-Miscellaneous(Comp)	0	0	0	6.09	0	-6.09	0.00%
12902 512141 Social Security	1900	0	1900	679.09	0	1220.91	35.70%
12902 512142 Retirement (Employer)	1703	0	1703	635.27	0	1067.73	37.30%
12902 512144 Health Insurance	9207	0	9207	3364.1	0	5842.9	36.50%
12902 512145 Life Insurance	33	0	33	8.14	0	24.86	24.70%
12902 512150 FSA Contribution	125	0	125	0	0	125	0.00%
12902 512173 Dental Insurance	540	0	540	215.43	0	324.57	39.90%
12902 529299 Purchase Care & Services	77500	0	77500	0	75000	2500	96.80%
12902 531311 Postage & Box Rent	1500	0	1500	335.18	0	1164.82	22.30%
12902 531312 Office Supplies	1200	0	1200	330.62	0	869.38	27.60%
12902 531313 Printing & Duplicating	2500	0	2500	768.72	0	1731.28	30.70%
12902 531314 Small Items Of Equipment	2500	0	2500	809.59	0	1690.41	32.40%
12902 531322 Subscriptions	100	0	100	99.75	0	0.25	99.80%
12902 531324 Membership Dues	165	0	165	165	0	0	100.00%
12902 531326 Advertising	4000	0	4000	185.7	0	3814.3	4.60%
12902 531334 Educational Initiative	5000	0	5000	2364.12	0	2635.88	47.30%
12902 532325 Registration	480	0	480	40	0	440	8.30%
12902 532335 Meals	32	0	32	0	0	32	0.00%
12902 532336 Lodging	270	0	270	246	0	24	91.10%
12902 532339 Other Travel & Tolls	25	0	25	0	0	25	0.00%
12902 533225 Telephone & Fax	150	0	150	5.36	0	144.64	3.60%
12902 535242 Maintain Machinery & Equip	700	0	700	244.4	0	455.6	34.90%
12902 571004 IP Telephony Allocation	109	0	109	36.32	0	72.68	33.30%
12902 571005 Duplicating Allocation	1096	0	1096	365.32	0	730.68	33.30%
12902 571009 MIS PC Group Allocation	832	0	832	277.32	0	554.68	33.30%

12902 571010 MIS Systems Grp Alloc(ISIS)	621	0	621	207	0	414	33.30%
12902 591519 Other Insurance	103	0	103	34.24	0	68.76	33.20%
12902 594950 Operating Reserve	45494	-15017	30477	0	0	30476.58	0.00%
12902 699700 Resv Applied Operating	-102306	15017	-87289	0	0	-87288.6	0.00%
TOTAL Solid Waste Program	0	0	0	10090.8	75000	-85090.8	0.00%
TOTAL General Fund	0	0	0	10090.8	75000	-85090.8	0.00%
TOTAL REVENUES	-183306	15017	-168289	-10808	0	-157481	
TOTAL EXPENSES	183306	-15017	168289	20898.8	75000	72389.78	
GRAND TOTAL	0	0	0	10090.8	75000	-85090.8	0.00%



MORE
▼



Rollover image to zoom in

Elkay EZH2O LZS8WSP Next Generation Water Bottle Refilling Station, Wall Mount, Gray

Item #: T9FB384182NG

 Email  Print

Ships same day. 

★★★★★ [2 reviews](#) | [Write a review](#)

List Price: ~~\$1,790.00~~ Save up to 36%

Price: \$ 1,145.00

Frequently Purchased Together



Elkay & Halsey 3000 Gallon Water Sentry Replacement

★★★★★ (34)

Add \$64.95

ELKAY®

SPECIFICATIONS

EZH20® Bottle Filling Station with Filtered Single LZ Cooler Model Enhanced LZS8WSLP & LZS8WSSP

RATED FOR INDOOR USE ONLY

PRODUCT SPECIFICATION

Unit shall include an electric water cooler with bottle filling station. LZS8WSLP & LZS8WSSP shall deliver 8 GPH of 50°F of drinking water at 90°F ambient and 80°F inlet water. Lower unit shall have pushbar activation. Bottle filling unit shall include an electronic sensor for touchless activation with an automatic 20-second shut-off timer. LED light illuminating the water dispensing area, brightening as water is being dispensed. Shall include a Green Ticker™ displaying count of plastic bottles saved from waste. Bottle filler shall provide a 1.1 gpm flow rate with laminar flow to minimize splashing. Shall include the WaterSentry® Plus 3000-gallon capacity filter, certified to NSF/ANSI 42 & 53, with visual filter monitor to indicate when replacement is necessary. Unit shall automatically detect a new filter and reset visual filter monitor accordingly. Unit shall have the ability to turn off refrigeration system as needed, in addition to self diagnosing system issues and relay messages related. Shall include integrated silver ion anti-microbial protection in key areas. Unit shall meet ADA guidelines. Unit shall be a lead-free design which is certified to NSF/ANSI 61 and 372 and meets Federal and State low-lead requirements. Unit shall be certified to UL399 and CAN/CSA 22.2 No. 120 & is FCC compliant.

STANDARD FEATURES

- Sanitary, touchless activation with auto 20-second shut-off (Bottle Filler)
- Easy-touch front and side pushbar controls (Cooler)
- Visual User Interface display includes:
 - Innovative Green Ticker™ counts bottles saved from waste
 - LED Visual Filter Monitor shows when replacement is necessary
- WaterSentry® Plus 3000-gallon capacity Filtration System, certified to NSF/ANSI 42 & 53 (Lead, Class 1 Particulate, Chlorine, Taste & Odor)
- Integrated Silver Ion Anti-microbial Protection in key areas
- Quick Fill Rate: 1.1 gpm
- Laminar Flow provides minimal splash
- Real Drain System eliminates standing water
- Cooler panel finishes: Light Gray Granite Vinyl Clad Steel or Stainless Steel
- Automatic filter status reset with each filter change

COOLING SYSTEM

- Compressor: hermetically-sealed, reciprocating type, single phase. Sealed-in lifetime lubrication.
- Condenser: Fan cooled, copper tube with aluminum fins. Fan motor is permanently lubricated.
- Cooling Unit: Combination tube-tank type. Self-cleansing. Continuous copper tubing with stainless steel tank. Fully insulated with EPS foam which meets UL requirements for self-extinguishing material.
- Refrigerant Control: Refrigerant R134a is controlled by accurately calibrated capillary tube.
- Temperature Control: Electronic temperature control requires no adjustment
- Temperature Sensing Device: Fully solid-state temperature sensing has no moving parts.



- LZS8WSLP (light grey)
- LZS8WSSP (stainless)

These units are replacing LZS8WSLK and LZS8WSSK, respectively.

CONSTRUCTION

- Stainless Steel basin with integral drain
- Galvanized structural steel cooler chassis provides structural integrity
- Stainless Steel bottle filler wrapper with ABS plastic alcove
- Cooler cabinet available as Light Gray Granite Vinyl Clad Steel or Stainless Steel (additional cost) construction
- Flexi-Guard® Safety Bubbler utilizes an infused anti-microbial pliable polyester elastomer to prevent accidental mouth injuries. Flexes on impact.

Replacement Filters: Available as Singles and Multi-packs. Order part numbers:

- 51300C (single)
- 51300C_3PK (three)
- 51300C_12PK (twelve)
- 51300C_24PK (twenty-four)
- 51300C_48PK (forty-eight)

Optional:

- Remote access to unit information/diagnostics
Contact Elkay or order P/N 100001858

Warranty: 5 year limited warranty on the unit's refrigeration system. Electrical components and water system are warranted for 12 months from date of installation or 18 months from factory shipment, whichever date falls first.

CAPACITIES CHART

Model	Voltage / Hertz	Chilling** Capacity	F.L. Amps	Rated Watts	Approx. Ship Wt.	ADA Compliant	UL399 and CAN/CSA 22.2 No. 120 Certified	NSF/ANSI 61 and 372 Certified	NSF/ANSI 42 and 53 Certified (Filter only)	FCC Compliant
LZS8WSLP	115V / 60 Hz	8.0 GPH	4.2	370	71 lbs.	*	*	*	*	*
LZS8WSSP	115V / 60 Hz	8.0 GPH	4.2	370	71 lbs.	*	*	*	*	*

**Based on 80°F inlet water & 90°F ambient air temp for 50°F chilled drinking water.

This specification describes an Elkay product with design, quality and functional benefits to the user. When making a comparison of other producer's offerings, be certain these features are not overlooked.

In keeping with our policy of continuing product improvement, Elkay reserves the right to change specification without notice. Please visit elkay.com for the most current version.

2222 Camden Court
Oak Brook, IL 60523
630-572-3192
elkay.com

© 2015 Elkay
SPEC00259 (04/2015)

EZH20® Bottle Filling Station
with Filtered Single LZ Cooler
Model Enhanced LZS8WSLP & LZS8WSSP

ELKAY®
ROUGH-IN DIMENSIONS

RATED FOR INDOOR USE ONLY

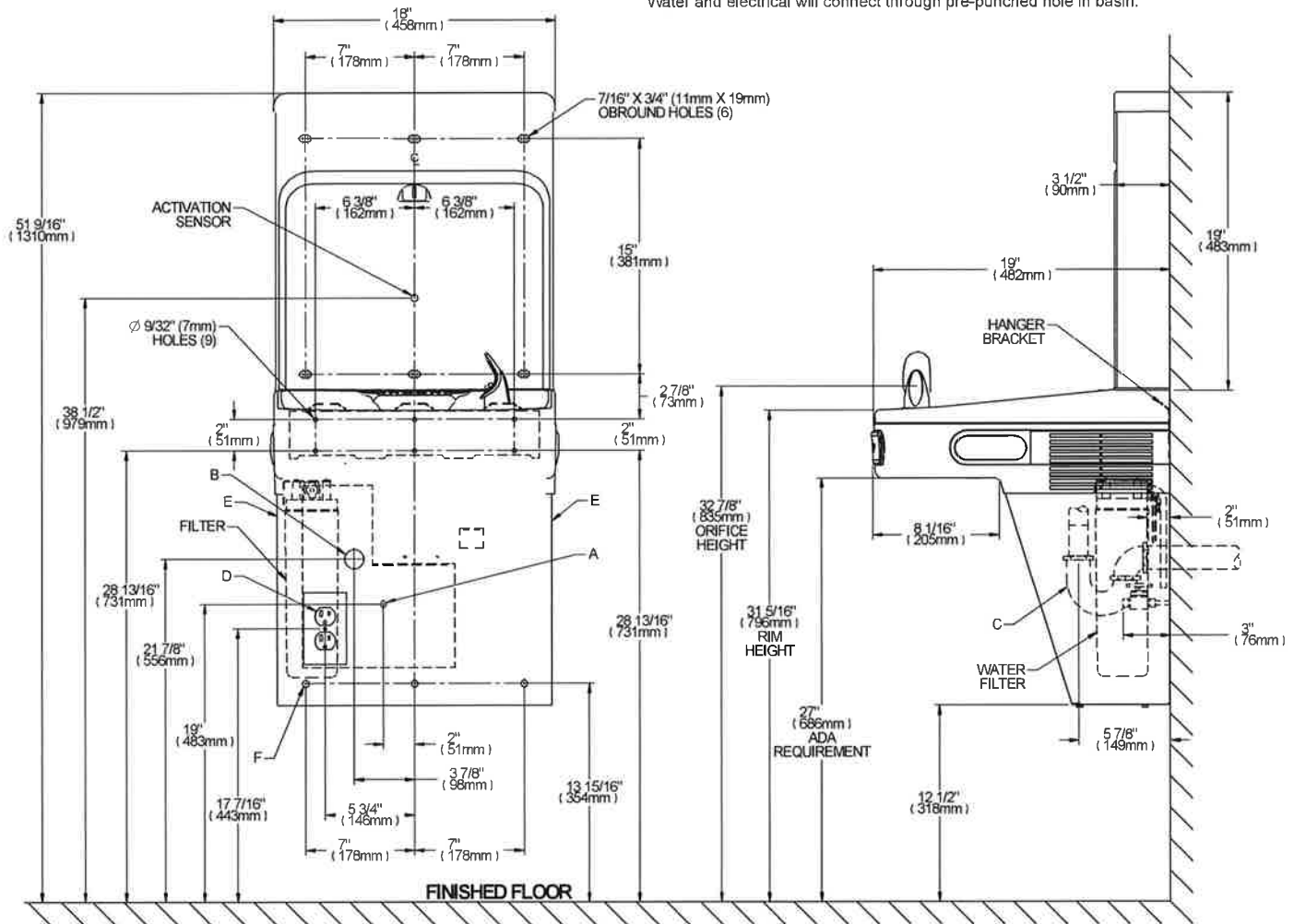
IMPORTANT! INSTALLER PLEASE NOTE:

These units are designed and built to provide water to the user which has not been altered by materials in the cooler waterway. The grounding of electrical equipment such as telephone, computers, etc. to water lines is a common procedure. This grounding may be in the building but may also occur away from the building. This grounding can cause electrical feedback into a water cooler creating an electrolysis which results in a metallic taste or an increase in the metal content of the water. This condition is avoidable by installing the cooler using the proper materials as shown.

NOTICE

This water cooler must be connected to the water supply using a dielectric coupling. The cooler is furnished with a non-metallic strainer which meets this requirement. The drain trap which is provided by the installer should also be plastic to completely isolate the cooler from the building plumbing system.

Bottle Filler unit will mount on bracket attached to wall by 6 holes (as shown). Water and electrical will connect through pre-punched hole in basin.



REDUCE HEIGHT BY 3 INCHES FOR INSTALLATION OF CHILDRENS ADA COOLER

LEGEND:

- A = Recommended Water Supply location. Shut-off Valve (not furnished) to accept 3/8" O.D. unplated copper tube. Up to 3" (76mm) maximum out from wall.
- B = Recommended Waste Outlet location. To accommodate 1-1/4" nominal drain. Drain stub 2" (51mm) out from wall.
- C = 1-1/4" Trap (not furnished).
- D = Electrical Supply (3) Wire Recessed Box Duplex Outlet.
- E = Insure proper ventilation by maintaining 6" (152mm) minimum clearance from cabinet louvers to wall.
- F = 7/16" (11mm) Bolt Holes for fastening to wall.

NOTE: Installations Must Use Ground Fault Circuit Interrupter (GFCI).

Job Name:	_____
Model:	_____ Qty. _____
Contact:	_____
Approval Signature:	_____
Notes:	_____