

AGENDA

JEFFERSON COUNTY PARKS COMMITTEE

**Jefferson County Courthouse
311 South Center Avenue, Rm 202
Jefferson WI 53549**

October 6, 2014 @ 9:30 a.m.

AMENDED – ITEM #12 AMENDING PARKS ORDINANCE SECTION 8.07 (4)(C)

Committee: Augie Tietz, Chairman, Mike Kelly, Vice Chair, Matt Foelker, Secretary,
Walt Christensen, Laura Payne

1. Call to Order
2. Roll Call
3. Certification of Compliance with the Open Meetings Law
4. Review of the Agenda
5. Public Comment
6. Approval of the September 8, 2014 Meeting Minutes
7. Communications
 - a. Jammin' at The Jamboree – Daily Union
 - b. Park Utility Easement Gets Nod – Daily Union
 - c. Fayville Grove Sanctuary Helping Preserve Habitat Critical for Birds – Daily Union
 - d. What is Lure Coursing?
 - e. JCBC – Jefferson County Bicycle Club
8. Discussion and Possible Decision on Pohlmann Park Playground Fundraising Proposal
9. Discussion and Possible Decision on Naming of Crawfish River Park
10. Discussion and Possible Decision on Plan to Fund Proposed Interurban Bicycle Trail Project
11. Discussion and Possible Decision on the Purchase and Placement of Road Signs for the Rock River National Water Trail
12. Discussion and Possible Decision on Amending the Jefferson County Parks Ordinance (Ordinance No. 1998-27)(Section 8.07 (4)(c))
13. Update on Share the Road Event in Watertown
14. Update on Youth Hunt Program

INTERURBAN TRAIL - Watertown to Oconomowoc

	Segment I	Segment II	Segment III
	Humboldt-River Road	River Road-CTH F	CTH F-2nd St
Bridge	\$ 657,940.00		\$ 781,740.00
Estimated Miles	2.26	4.7	4
Trail Cost	\$ 763,006.30	\$ 1,586,783.01	\$ 1,350,453.62
Total Segment Cost:	\$ 1,420,946.30	\$ 1,586,783.01	\$ 2,132,193.62

Total Project Cost: **\$ 5,139,922.93**

Stewardship @ 50% \$ 710,473.15

Other
Grants
Gifts
Donations

\$ 510,473.15

Jefferson County \$ 200,000.00

Total Segment I Cost: \$ 1,420,946.30

Conceptual Planning Only

Watertown (Jefferson Co) to Oconomowoc (Waukesha Co)
Project Cost: \$5,139,922.93

Watertown (Jefferson Co) to Oconomowoc (Waukesha Co)
Project Cost: \$5,139,922.93

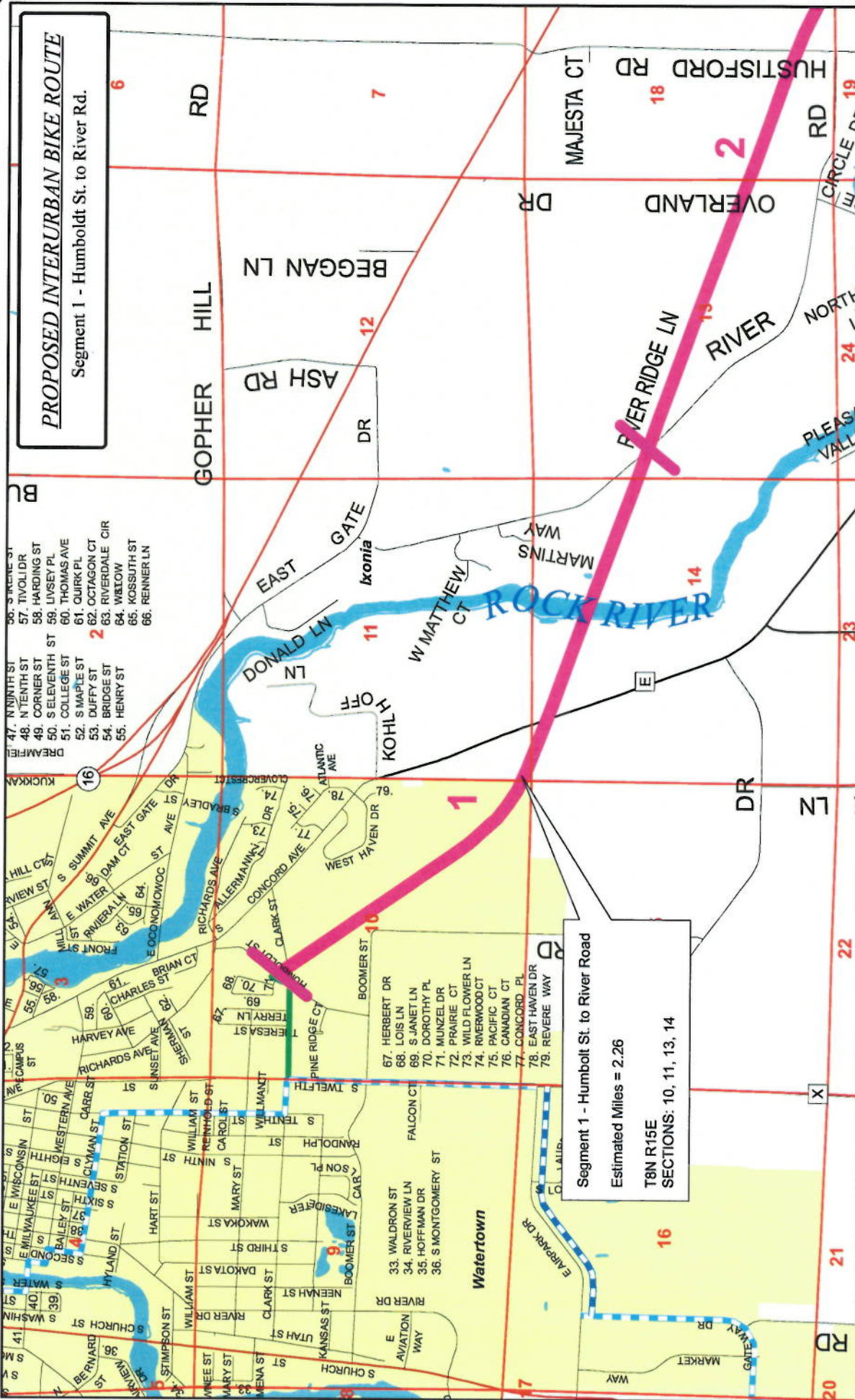


- Proposed Interurban Bike Route
- Lake Country Recreation Trail
- On Road Route to Lake Country Rd
- On Road Route to Glacial River Trail

CONFIDENTIALITY AND INFORMATION OFFICE
September 2014

PROPOSED INTERURBAN BIKE ROUTE

Segment 1 - Humboldt St. to River Rd.



Proposed Interurban Bike Route

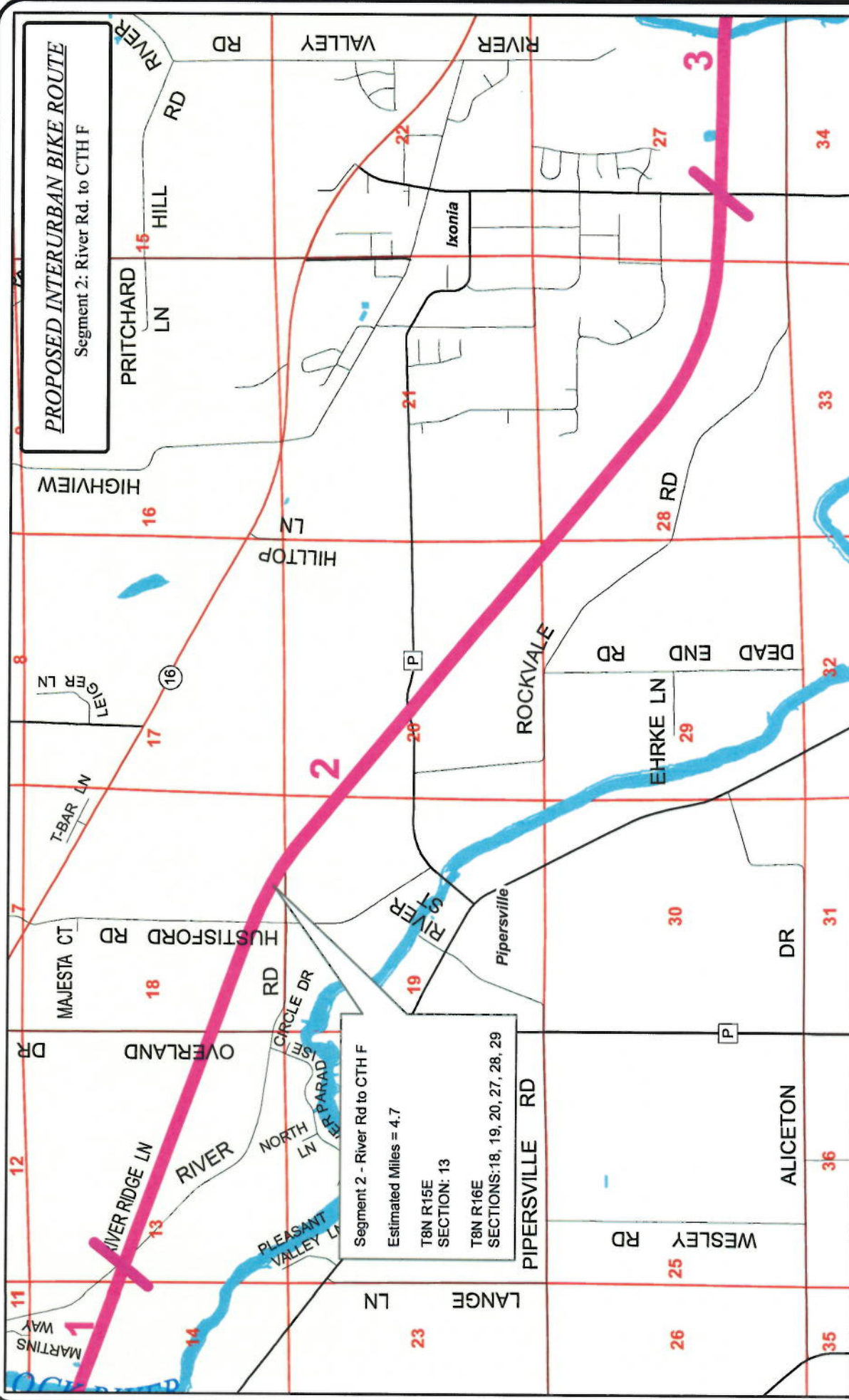
Section Lines



0 0.25 0.5 1 Miles

PROPOSED INTERURBAN BIKE ROUTE

Segment 2: River Rd. to CTH F

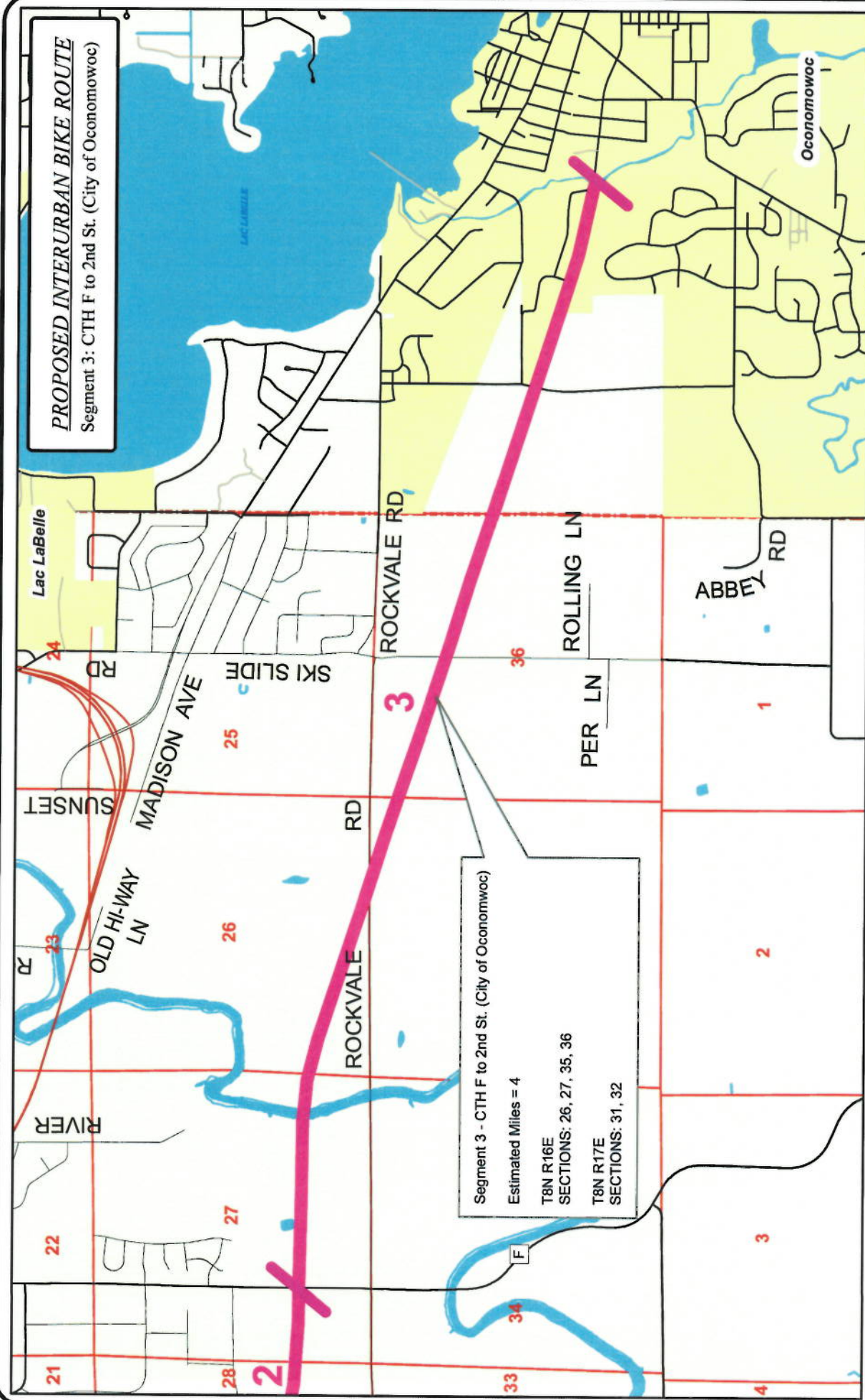


Segment 2 - River Rd to CTH F
 Estimated Miles = 4.7
 T8N R15E
 SECTION: 13
 T8N R16E
 SECTIONS: 18, 19, 20, 27, 28, 29

- Proposed Interurban Bike Route
- Section Lines

PROPOSED INTERURBAN BIKE ROUTE

Segment 3: CTH F to 2nd St. (City of Oconomowoc)



Segment 3 - CTH F to 2nd St. (City of Oconomowoc)

Estimated Miles = 4

T8N R16E

SECTIONS: 26, 27, 35, 36

T8N R17E

SECTIONS: 31, 32

Proposed Interurban Bike Route

Section Line

JEFFERSON COUNTY Rock River Trail Signs in Rural Area State Highways (Not in a Community)

Sign Number	Route	Location	MI-92 24 x 24	MI-92 36 x 36	MP6-1 [UA]	MP6-1 [LA]	MP6-1 [RA]	MP6-4 [DA]	MP6-6L [LA UA]	MP6-6R [UA RA]	MP6-2R [TR] 30 x 30	Wood Post 4" x 6" x 14'	Wood Post 4" x 6" x 16'	General Notes
1	STH 26	South of Bus 26		1									1	reassurance marker south of Gateway Dr
2	STH 26	Bus 26		1							1		1	J3 200' north of type 1 exit sign
3	Bus 26	Groeler Rd	1											reassurance marker on back of do not enter sign west of Groeler Rd
4	Bus 26	Groeler Rd	1		1							1		J3 west of Groeler Rd right of South 26 [UA] North 26 [RB] sign
5	STH 106	STH 26	1											reassurance marker west of 26 off ramp on back of wrong way sign
6	STH 106	STH 26	1											reassurance marker 150' east of 26 off ramp
7	STH 16	CTH F	1			1								J3 right of roundabout diagrammatic sign
8	CTH F	STH 16	1				1							J3 right of roundabout diagrammatic sign
9	STH 16	CTH F	1											reassurance marker 75' east of roundabout right of East 15 sign
10	STH 16	Rock River Rd	1											reassurance marker 300' west of Rock River Rd right of West 16 sign
11	Rock River Rd	STH 16	1				1							J3 right of 16 double arrow sign
12	STH 16	Rock River Rd	1		1	2	2	0	0	0	1		2	J3 at Rock river Rd
Totals			10	2	1	2	2	0	0	0	1	7		

#11

(c) No ~~person shall bring a dog~~ shall be allowed into the dog park without a permit ~~therefore~~. Fees for dog park permits shall be: County Residents Dogs licensed in Jefferson County: annual permit ~~\$20.00~~ \$25.00, permit for additional dog \$10.00, senior citizen annual permit \$10.00, replacement permit \$10.00, daily permit \$5.00; Nonresidents Dogs owned by non-county residents: annual permit ~~\$25.00~~ \$30.00, permit for additional dog \$10.00, senior citizen annual permit \$10.00, replacement permit \$10.00, daily permit \$5.00. [Section 8.07(4) adopted on 10/14/03, Ord. 2003-18; am. 09/11/07, Ord. 2007-20; Res. No. 2011-64, 11-15-2011]

Building a better, more bike-friendly Wisconsin.



PUBLICATIONS PROGRAMS DONATIONS

#13

FOR YOUR COMMUNITY FOR YOUR BUSINESS EVENTS

JOIN TODAY

MERCHANDISE

ABOUT US

BLOG

THE BICYCLE BLOG OF WISCONSIN

SEARCH THE BLOG

VIEW THE RSS FEED >

ENTER EMAIL TO SUBSCRIBE

Delivered by FeedBurner

RECENT POSTS

Milwaukee Quietly Adds Buffered Bike Lanes

National Bike Challenge: We are the Champions!

IRONMAN Dream Brought to Close By Hit-and-Run Driver

Watertown to Oconomowoc "Interurban" Trail Only a Matter of Time

CATEGORIES

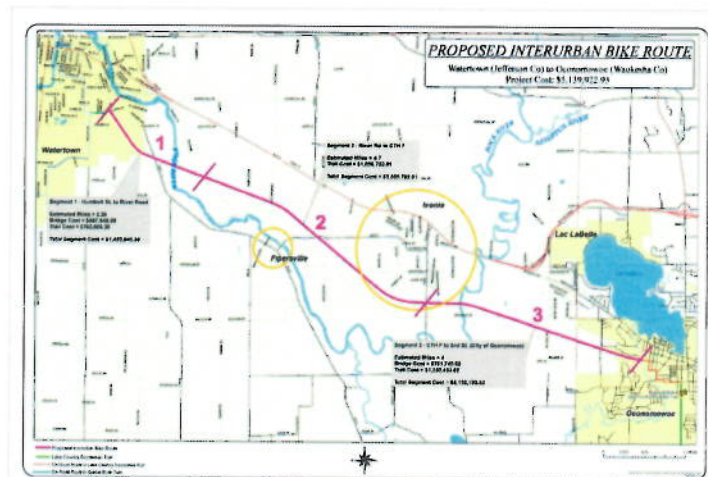
ARCHIVES

Watertown to Oconomowoc "Interurban" Trail Only a Matter of Time

POSTED ON SEPTEMBER 30, 2014

BY DAVE CIESLEWICZ, EXECUTIVE DIRECTOR

Augie Tietz has a dream. The citizen chairperson of the Jefferson County Parks Commission wants to see Watertown connected to Oconomowoc via the "Interurban Bike Route."



Click on the image above to open a multi-page PDF of that shows each segment of the proposed 11 mile route of the trail between Watertown and Oconomowoc.

I met Augie and Jefferson County Parks Program Assistant Mary Nimm at an event in Watertown over the weekend. They were standing in front of a map explaining the eleven-mile route that follows a WE Energies power line. The utility has been very cooperative, they explained, but a grant proposal for Transportation Alternatives Program funds narrowly missed approval this summer.

Undeterred, Tietz and Nimm and other supporters of the trail have regrouped. They've now broken the project into three manageable pieces of about \$1.5 million to \$2 million per segment. They're going after the first two and a quarter miles out of Watertown first with the idea that once people ride that part they'll be wanting more. They will soon be applying for state Knowles-Nelson Stewardship Fund dollars, which would cover half the costs. The rest would need to be raised locally. The local match could come from the county, the local cities and towns or private sources.



RIDE AND BUY LOCAL





Bird's eye view of the proposed trail connection in blue shows it will add to the existing red network. The next obvious gap to fill would be to Waterloo and from there to Sun Prairie.



With dedicated and smart volunteers like Augie and committed public servants like Mary I'm sure it's only a matter of time before we can ride safely from Watertown to Oconomowoc and then on to the Lake Country Trail and beyond. It's a beautiful dream.

ADVERTISEMENT

THE 2014



WISCONSIN

BIKE SUMMIT



THE BICYCLING COMMUNITY
COMES TOGETHER

FRIDAY, OCTOBER 10TH
AT EDGEWOOD COLLEGE

REGISTER NOW »






8+1



About Dave Cieslewicz, Executive Director

Dave Cieslewicz served two terms as mayor of Madison where he set the city on a path for Platinum status as one of the best biking cities in North America. Before that he started his own nonprofit, 1000 Friends of Wisconsin, which focuses on land use and transportation policy. He has been an adjunct professor at the UW Madison's Department of Urban and Regional Planning where he teaches a class called Bikes, Pedestrians and Cities. He pronounces his name chess LEV ich, but nobody else does.

[View all posts by Dave Cieslewicz, Executive Director →](#)

[← Previous](#)

[Next →](#)

One thought on "Watertown to Oconomowoc "Interurban" Trail Only a Matter of Time"

1.



Peter says:

October 1, 2014 at 9:56 am

Go Augie! You have a friend and ally in the Bike Fed. Looking forward to riding the Interurban!



#14

Jefferson County Parks Department
320 S. Main St., Room 204
Jefferson, WI 53549
(920) 674-7260

Immediate Press Release

2014 Youth Hunter Program
Dorothy Carnes County Park
November 22 – November 30, 2014

The Jefferson County Parks Department has an opportunity for first time youth hunters to participate in a limited gun deer hunt in portions of Dorothy Carnes County Park. The hunt will take place during the specified Wisconsin Gun Deer Hunt from November 22 to November 30, 2014. The week will be broken down into two periods, allowing each selected hunter to have the property to themselves for four days. The first hunting period will be from November 22-25, and the second hunting period from November 27-November 30. Applicants will have to specify a preference for the first or second hunt on their Jefferson County Youth Deer Hunt application. Each hunter selected will have a 120 acre section of the park to hunt in with 40 acres of lowland woods and marsh adjacent to 80 acres of cropland.

Selected participants and their chaperones will be required to participate in a 2 hour orientation with Jefferson County Park Staff to review the rules of the hunt, hunting boundaries and expectations for access to the property. Applicants will also be required to be first time hunters between the ages of 10 to 14, and have a chaperone with a minimum of 5 years of deer hunting experience present at all times. Eligible hunters will also be required to possess a valid Wisconsin Gun Deer Tag.

The Jefferson County Parks Department will accept completed applications from qualified hunters October 1 - 19. Applications will be available in person or on our website www.jeffersoncountywi.gov/parks. Applications will be processed and two hunters will be randomly drawn to participate in the November hunts.

For more information or questions, please contact the Jefferson County Parks Department at 920-674-7260 or janey@jeffersoncountywi.gov.

###



Jefferson County Parks Department
311 South Center Ave., Room 204
Jefferson, WI 53549
(920) 674-7260

Immediate Release

October 1, 2014

Jefferson County Surplus Wood Sale

The Jefferson County Parks Department will be accepting sealed bids for the sale of surplus wood at the parks building located at 1555 South Industrial Drive, Jefferson, WI. All surplus wood has been piled and marked with a lot number. Anyone from the public interested in submitting a sealed bid for the surplus wood can either pick up a bid sheet from the Jefferson County Courthouse, Room 204, or from the Jefferson County web page at www.jeffersoncountywi.gov/rfp

Surplus wood for sale includes oak, ash, and hickory in mixed piles. To view the surplus wood, stop by the Parks Department shop located on Industrial Drive in Jefferson, or contact Kevin at 920-674-7540 to schedule an appointment. All bids will be opened at 9:00 a.m. Friday, October 17th, 2014, Jefferson County Courthouse, Room 202, and surplus wood awarded to the highest bidder.

Jefferson County reserves the right to accept or reject any or all bids.



Jefferson County Parks Department
311 South Center Ave., Room 204
Jefferson, WI 53549
(920) 674-7260

Immediate Release

September 22, 2014

BARK AT THE MOON

With a full moon just days away, the Jefferson County Parks Department invites all of our canine friends and their owners to the Jefferson County Dog Park on Saturday, October 4 from 5:30 PM until 8:00 PM to enjoy a moonlight stroll. Dog treats, games, prizes, silent auction and more will be part of the event. Cost: \$5 suggested donation per dog; all proceeds will benefit the Jefferson County Dog Park. Hot dogs & refreshments will be available for purchase.

Bring a flashlight in case of clouds. Dogs must have a 2014 county park tag or day pass. These are available at the park during the event. The Jefferson County Dog Park is located at W5098 K-9 Drive; between Jefferson and Johnson Creek off of Hwy 26. For additional information, please contact the Jefferson County Parks Department at 920-674-7260, 311 South Center Avenue in Jefferson, WI 53549 or dogpark@jeffersoncountyiwi.gov.

Friends of the Jefferson County Dog Park Present

Howl'o'ween Party!



Saturday Oct. 25th Noon to 3:00 PM

Rain or Shine

Large & Small Dogs Welcome

\$5.00 Suggested Donation



Costume Contest & Parade! Area 1 Gatehouse

Registration Noon Contest & Parade 1:00 PM

Best Dog Costume & Best Dog with Owner Costume

Prizes for top 3 finishers in each category



Autumn Portrait by Julie Anderson

\$20.00 first dog. \$3.00 ea additional dog in photo

People in photo are FREE!



+Please leash your canine costume contestant

+Dogs must be under control of their owner

+Dogs must have current Jefferson County Dog Tag or day pass

All Proceeds Benefit the Jefferson County Dog Park!

15. Update on Surplus Wood Sale
16. Update on Mountain Biking Facility at Human Services
17. Update on Dog Park Events
18. Update on Permanent Utility Easement at Korth Park
19. Update on 2015 Jefferson County Parks Budget
20. Update on Park Areas for Special Needs Individuals
21. Update on Farm Bid Package Kemmeter Farm Rental
22. Update on Watertown Outboarders
23. Update on Potential Master Plan Models for Crawfish River County Park
24. Update on 2014 Parks Department Budget
25. Update on Glacial Heritage Area (GHA) Project
26. Update on HWY 26 by-pass & Glacial River Bike Trail
27. Set Tentative Meeting Dates/Times for: November 3, 2014 at 9:30 a.m.
28. Adjourn

The Committee may discuss and/or take action on any item specifically listed on the agenda. Individuals requiring special accommodations for attendance at the meeting should contact the County Administrator at 920-674-7101, 24 hours prior to the meeting, so appropriate arrangements can be made.

MINUTES

JEFFERSON COUNTY PARKS COMMITTEE

Jefferson County Courthouse
311 South Center Avenue, Rm 202
Jefferson WI 53549

September 8, 2014 @ 9:30 a.m.

Committee: Augie Tietz, Chairman, Mike Kelly, Vice Chair, Matt Foelker, Secretary,
Walt Christensen, Laura Payne

1. Call to Order

Tietz called the meeting to order at 9:30 a.m.

2. Roll Call

Present: Tietz, Christensen, Payne, Kelly

Absent: Foelker

Others Present: Nehmer, Nimm, Ward

3. Certification of Compliance with the Open Meetings Law

Meeting posted according to Open Meetings Law

4. Review of the Agenda

Agenda as written

5. Public Comment

No Public Comment

6. Approval of the August 4, 2014 Meeting Minutes

Christensen moved, Payne seconded. Approved as written.

7. Communications

The following communications were included for review.

- a. Email from Dave Ring
- b. County Awaits Word on Glacial Heritage Area Grants – Daily Union
- c. Group Meeting Permit – Palmyra High School Cross Country Meet
- d. Cabin Fever – Daily Jefferson County Union
- e. Email from Clare Carlson – GHA Events
- f. New Playground for Korth Park – Jefferson County Living
- g. Community Foundation Makes Donation – Lake Mills Leader
- h. Trailhead Facility Available for Activities – Waterloo Courier
- i. Dog Dayz Set at Aquatic Center
- j. Korth Park Playground Ribbon Cutting This Friday – Lake Mills Leader

- k. Bring Your Dog to The Pool This Sunday – Lake Mills Leader
- l. County Cuts Ribbon on Korth Playground – Daily Union
- m. Bike Trail to Open Sept. 1 at Zeloski Marsh – Daily Union
- n. Mason Jar Jamboree – Daily Union
- o. Park Log Home Near Completion – Daily Union
- p. Jefferson's Miller Wins at P-E Invite – Daily Union
- q. Celebrate Local History, Music at Jamboree – Jefferson County Living
- r. County Cuts Ribbon on Korth Playground – Lake Mills Leader

8. Discussion and Possible Decision on Permanent Utility Easement at Korth Park

Duane Vandermause, City of Lake Mills and Chris Evenson, electric utility were present. Vandermause noted that the City of Lake Mills is attempting to reinforce the City's electric system. The new design allows smaller sub-stations for electric routes to serve as back-up and redundancy. Vandermause illustrated existing electric utility lines and noted that original installation was a connection/extension to complete the "loop". Existing lines (in question) are "mostly" in the Town Right of Way, very close to the property line. The utility's goal is to directionally drill lines (approximately 4 ft deep) and to install a mini sub-station in the Shorewood Hills subdivision, completing the redundant system. The requested easement would allow the connection. The easement request is to replace overhead lines and put the facility underground with four above ground equipment box locations around the park. The department is working on quotes for a title search.

Christensen asked if the removal of lines would be an aesthetic improvement to the park.

Evenson noted that the utility has been working on installing underground through the Korth farm since the county took over the property, approximately 14 years ago. The work has been segmented until present.

Kelly questioned if the entire project would be underground.

Vandermause indicated that from Korth Lane "down", the overhead will be removed. One utility pole will be located on the SE corner of park property and overhead will continue from that point.

Frankie Fuller (GHA) questioned the projects ecological impact on Rock Lake.

Vandermause stated directional drilling reduces overall impact. Underground lines will allow the trimming of the trees around the utility lines to cease.

Payne questioned how large will the pits be?

Evenson indicated 5 foot-6 foot pits with cabinets at pit locations with the locations then back-filled. Crew follows with restoration.

Christensen asked if other utilities can/will use the conduit and if there will be specs for fire burn around utility boxes.

Nehmer noted that the City has agreed to run a title search to see if there are existing easements

Tietz indicated overhead lines are always a hazard.

Nehmer noted an email he received from the DNR – DNR grants staff will need to review the site plans, project timeline, and draft easements for the crossings. Likely DNR will issue a letter of consent for the project. DNR preference is to have no new structures (i.e. junction boxes, pedestals etc.) on the park property – impacting the public's use. Timing of the project should be coordinated with County Parks in order to avoid traffic congestion, higher use time, and disturbed areas posing a safety threat for park users, etc.

Vandermause stated their timeline is tight, as the directional drill rig is restricted on timeframes.

Nehmer "Parks staff" to work with City and agrees to pedestal structures.

The resolution shall include DNR comments/notes.

Christensen motioned to approve the utility easement as drafted pending DNR approval. Payne seconded. Motion carried 4-0.

9. Discussion and Possible Decision on County Conservation Aids Grant Resolution and application renewal

Nehmer noted that a sample resolution was included in the packet. The application benefits fish and game on the Hinsdorff parcel at Rose Lake in Dorothy Carnes Park. Nehmer noted that with committee approval, the resolution will go to the county board Tuesday evening.

Kelly motioned to approve. Payne seconded. Motion carried 4-0.

10. Discussion and Possible Decision on mountain biking trails in the woods at Human Services

Nehmer identified the Human Services complex off Annex and Collins Roads in Jefferson. He stated the 18.5 acre woods had once been discussed as a disc golf location; however a new area for disc golf has been identified. Discussions have occurred on how the woods might possibly provide an opportunity for mountain biking. The woods are owned by Jefferson County under guidance of Human Services. There is a high drumlin in the woods. Human Services is in favor of the concept and would like to see a system for the employees to reach the trail from the buildings.

Christensen questioned if we would be able to provide a spur to the trail for walking and road bikers.

Tietz noted that Human Services commented that they are in favor of the idea. Tietz is asking if we will have to develop a concept plan and how do we fund it? How to fund construction?

Kelly commented that it's a great plan, the topography and parking are great for this type of opportunity.

Payne stated that it's a great idea and will be well used.

Christensen asked what the effects will be on the woods.

Nehmer stated that sustainable trail design will be used.

Kelly motioned to pursue this area for a mountain biking trail system. Payne seconded. Motion carried 4-0.

11. Discussion and Possible Decision on 2015 Jefferson County Parks Budget

Nehmer indicated the budget information was provided in the packet. The information included the Mission Statement, purpose, and performance goals. Budget numbers are the same as those presented at last month's meeting. The proposed budget is slightly lower than the 2014 budget. The question has been asked if there are capital dollars to be used for sections/portions of the Interurban Line.

Christensen motioned to approve the budget as presented. Payne seconded. Motion carried 4-0

12. Update on park areas for special needs individuals

Nimm stated that she had sent an email to neighboring communities. The email noted that the Parks Department has been investigating park areas for special needs individuals and asked the communities if they had any such facilities. No community responses were received.

Christensen noted that he called Fort Atkinson. There are two parks with fenced in areas however they have not considered such use.

13. Update on Farm Bid Package Kemmeter Farm Rental

Nehmer noted that the Kemmeter farm is the most recent acquisition for Dorothy Carnes park at north end of Rose Lake. The farm is part of a 120 acre parcel of which has 77 tillable acres. The farm lease has been written as a 3 year contract and is expiring and due for re-bidding. The funds received from the lease are segregated for use at Dorothy Carnes Park only and is used for restoring lands and capital projects at the park.

Kelly noted that a climate quest challenge grant has been submitted and there is possibly a need for an area to grow woody bio-mass 'somewhere' within the county if the application is awarded. The bio-mass area could lead into an opportunity to transition the parkland. It was asked if perhaps there might be an opportunity for a staggered option for part of the parcel if grant funds are awarded. Perhaps 10 acres bordering the park could be written as a 1 year lease?

Christensen noted that the committee and department should make sure the successful bidder is a responsible farmer.

14. Update on Watertown Outboarders

Nehmer requested Tietz expand on our involvement and interface with Quirk Foundation.

Tietz noted that the department has submitted a request for \$30k. In response, the foundation has asked for more information including other possible funding sources for the project. The \$30k request includes the vault toilet, well, and site amenities. Tietz also suggested that a site plan should be developed. Nehmer and Tietz will be meeting with the foundation in October.

15. Update on Altpeter Park, Town of Sumner letter

Christensen noted that the Township does not have an interest in the transfer of the park property.

16. Update on potential Master Plan Models for Crawfish River County Park

Nehmer noted cost effective ways of master planning the park have been discussed.

Steve Grabow stated options were explored for free or low cost master planning concepts. The first (unsuccessful) goal was to have a 2nd year graduate student incorporate community ideas into a plan. The back-up plan was a senior thesis or capstone project. A two part project application was submitted on 8/19/2014 - 17 acres (part 1) and to incorporate the 5 acre (part 2) parcel across the river. Preliminary program might include a small park pavilion using typical design – announcing “presence” at the city entrance. Program will call for a school park interface in an oak savanna area for education purposes. Perhaps also a small camping opportunity could be included. It was noted that on the 5 acre site potential for parking, restroom, and a footbridge (to access the 17 acres) for safe corridor. Third approach – lower cost option to entice design community for in-house visioning and refine programming followed by work with trusted designers that the County has had prior working relationships with.

17. Update on 2014 Parks Department Budget

Nehmer made these comments regarding the Parks Department Budget(s)

1801 – completed 58.3% of the year – spent 48.75% of the budget

1806 – Carol Liddle fund – Dorothy Carnes Park – over \$800k for parks work, 81k remaining

Carlin Weld – 1970’s park, designated funds with ability to spend interest on \$5k, capital funds to be used for disc golf

Carnes Park – funds generated from Kemmetter Farm. Waiting to hear on grant funding application

Parks Building – heated with used drain oil

Garman Nature Preserve – 40 acres in Waterloo. Well installed in 2014.

Snowmobile – grant close out complete, check deposited.

Bike trail – heavily used

Dog Park – funded by revenue from the dog park. Looking to finish asphalt in 2014.

1840 – grounds keeping, budgeted by each department. Plan to update and refresh plantings on east side of the Courthouse landscape proposed in 2014.

Kelly asked about grounds keeping and how are the funds brought into the department. Are the park expansions creating a stress on the staff to keep-up with maintenance?

Christensen questioned if the grounds maintenance keeps us from working on the parks.

18. Update on Glacial Heritage Area (GHA) Project

Nehmer – no update

19. Update on Dog Dayz of Summer Swim

Nehmer noted that 150 dogs and 300 people were in attendance. The City of Jefferson would like to partner with other agencies for a greater out-reach and host again next year.

20. Update on Mason Jar Jamboree

Christensen noted the music act was good and he observed a great number of cars. There were guests at every station. Mr Mulvey had items for sale with ½ proceeds to the park.

Grabow stated the farmstead area was part of an in-house design charrette project. The Mason Jar area has allowed us to refine the program.

Nimm noted that the bird walk was well attended and there were approximately 100 people in the park at the Jamboree around noon.

21. Update on HWY 26 by-pass & Glacial River bike trail

Nehmer said asphalt was scheduled to start over the weekend for the remainder of the trail....

Nimm noted the asphalt work had not yet been started.

22. Set Tentative Meeting Dates/Times for: October 6, 2014 at 9:30 a.m.

23. Adjourn 11:45am

Christensen motioned to adjourn. Kelly seconded.

Respectfully Submitted,

Mary S Nimm
Program Assistant