

**AGENDA**  
**JEFFERSON COUNTY PARKS COMMITTEE**  
**Jefferson County Courthouse**  
**311 South Center Avenue, Rm 202**  
**Jefferson WI 53549**  
**March 2, 2015 @ 9:30 a.m.**  
**AMENDED – ITEM #8 ADDED**

Committee: Augie Tietz, Chairman, Mike Kelly, Vice Chair, Matt Foelker, Secretary, Walt Christensen, Laura Payne

1. Call to Order
2. Roll Call
3. Certification of Compliance with the Open Meetings Law
4. Review of the Agenda
5. Public Comment (members of the Public who wish to address the Committee on specific agenda items must register their request at this time)
6. Approval of the February 2, 2015 Meeting Minutes
7. Communications
  - a. Friends of Rose Lake Bird Count, Saturday May 9, 2015
  - b. County Waives Fee for Snowmobile Alliance – Daily Jefferson County Union
  - c. Dog Park Donation – Bruce Whitmore
  - d. County Parks Great Places to Play in Snow – Daily Jefferson County Union
  - e. Natural Resources Foundation Investment Update
  - f. Bark River Paddle – Daily Jefferson County Union
  - g. County OK's Licensing Pact for Interurban Trail – Daily Jefferson County Union
  - h. Board Takes Next Step Down Trail – Watertown Daily Times
8. Discussion and Possible Decision on Purchase of Skid Steer
9. Update on Illegal Hunting at Dorothy Carnes Park – Sheriff Milbrath
10. Update on Indian Mounds Park & Koshkonong Lake Road – Morrow & Ward
11. Update on Parks and County Website
12. Update on Milwaukee Journal Sentinel Sports Show & Canoecopia
13. Update on Group Permits
  - a. Friends of Rose Lake
  - b. Husky Group, Cheryl Stegman
  - c. Trek 100
  - d. 2 Rivers Night Event
14. Update on Parks Donation(s)
15. Update on Watertown Outboarders Implementation Plan
16. Update on Holzhueter Implementation Plan Process
17. Update on Crawfish River Park Plan Process
18. Update on Glacial Heritage Area (GHA) Project – Greg Matthews
19. Update on Fundraising for Interurban Trail
20. Update on 2014 Parks Department Budget/2014 Carry-Over Requests
21. Update on 2015 Parks Department Budget
22. Set next meeting date April 6, 2015 @ 9:30am and possible agenda items.
23. Adjourn

**The Committee may discuss and/or take action on any item specifically listed on the agenda. Individuals requiring special accommodations for attendance at the meeting should contact the County Administrator at 920-674-7101, 24 hours prior to the meeting, so appropriate arrangements can be made.**

**MINUTES**  
**JEFFERSON COUNTY PARKS COMMITTEE**

Jefferson County Courthouse  
311 South Center Avenue, Rm 202  
Jefferson WI 53549

February 2, 2015 @ 9:30 a.m.

Committee: Augie Tietz, Chairman, Mike Kelly, Vice Chair, Matt Foelker, Secretary, Walt Christensen, Laura Payne

**1. Call to Order**

Tietz called the meeting to order at 9:30 a.m.

**2. Roll Call**

Present: Tietz, Foelker, Payne, Christensen, Kelly (@ 9:40 a.m.)

Others: Nehmer, Nimm, Wiesmann, Wehmeier, Ward, Schroeder

**3. Certification of Compliance with the Open Meetings Law**

Meeting Posted and in Compliance

**4. Review of the Agenda**

Agenda approved

**5. Public Comment (members of the Public who wish to address the Committee on specific agenda items must register their request at this time)**

No comment

**6. Approval of the December 1, 2014 Meeting Minutes**

Foelker motioned to approve. Christensen seconded. Passes on a 4/0 voice vote.

**7. Communications**

- a. County Bicycle Maps Available – Daily Jefferson County Union
- b. County Dog Park Calendars Available – Daily Jefferson County Union
- c. Newsmakers – Daily Jefferson County Union
- d. Huskie Huddle/Malamute Mingle – Daily Jefferson County Union
- e. A Glacial Heritage Area Educational Event – Friends of GHA
- f. Winter Walk – Daily Jefferson County Union
- g. Friends of Rose Lake Duck House Material Donation
- h. Waterloo Regional Trailhead Facility Recognition Plaque

**8. Discussion and Possible Decision on Grooming Services Contract with the Jefferson County Snowmobile Alliance**

**Nehmer** stated that there is an annual contract with JCSA effective 12/1-11/30, yearly. It was January and the department had not received contract so we spoke with Ward and Wehmeier.

**Wehmeier** – had opportunity to meet with Ward, Bennett and others regarding Workman's Comp Insurance, trying to identify how it is dealt with under Work Comp law. Very unclear. Every county handles it differently. Met with WIMIC, reviewed the workforce development criteria and it is still unclear. Currently the insurance is grant reimbursable and approximately \$900. The JCSA has stated that they are "true" volunteers.

**Wehmeier** noted there are 2 questions to be asked: 1. Should we continue the requirement for Workman's Comp Insurance (risk mitigation) and, 2. If we deem appropriate to have the insurance, how shall it be paid for?

**Ward** – indicated that in some circumstances it is very clear there are employees, other circumstances where it is very clear there are volunteers. However, when money is involved, when hours worked are submitted for funding by the JCSA the opinion is to air on the side of caution. The insurance is to be paid for and provided by the JCSA. We (the County) do not need to assume the risk to cover work related type injuries. Injury could result in large amount of dollars to the county. Asking for, and recommending that the agreement to carry Workman's Comp Insurance remain in place.

**Christensen** – noted that if the insurance agency didn't think they were employees that they wouldn't insure.

**Wehmeier** – 18 clubs with various amount of hours submitted.

**Weismann** – questioned if the insurance is a reimbursable grant line item.

**Nehmer** – stated that yes, it is a 100% reimbursable cost.

**Foelker** – noted that \$900 is a fair price.

**Christensen** – stated that if we have been requiring the insurance, then precedence has been set. If required in past, what happens if we pull back and a case went to court? What would happen if someone got hurt and sued the county?

**Ward** – if the club members are deemed employees, then a claim could be made against the county insurance policy, if the injured came after the county.

**Ward** – as government entity, we have a limited general liability \$50,000 cap.

**Wehmeier** – noted the group did offer to sign an affidavit stating they were volunteers.

**Foelker motioned** to move forward with contract as is written. Christensen seconded.

**Kelly** – asked why the club against the contract.

**Jeff Ziebell (JCSA)** – stated that the \$900 is money we do not need to spend. \$900 is a lot of money.

For the JCSA to come up with \$900 is a challenge.

**Bennett (JCSA)** – questioned whether the parks department has workman's comp for the volunteers that worked on the cabin?

**Wiesmann** – volunteer waivers were in place and no funds are/were exchanged for the cabin project.

**???(JCSA Member)** – “an employee is someone that receives money. I have yet to receive one red cent for working on the trails.”

**The motion to** move forward with the Grooming Services Contract as written carries with a 4/1 (Kelly) voice vote.

**Wehmeier** – grants only available to the counties to provide grooming and trail maintenance and the county has various things the county can do for the administrative fee. The DNR also has their fees – are there some provisions that perhaps we can off-set the cost of the insurance? Could we reduce our administrative fee to help off-set the \$900 fee?

**Christensen** – the \$900 can be taken from the grant? How does that affect the budget balance?

**Tietz** – are we willing to help with all or part of the \$900? Either we reduce our admin fee or unsure of another way?

**Nehmer** – the county gets 50% of the grant in advance. At season end, we submit the alliance hours and then receive the other 50%.

**Nehmer** – noted that approx. 4 years ago, at the request of ways to find revenue, the department reported to the committee that charging the admin fee is a source of revenue for the department. Voluntarily, the department capped the admin fee not to exceed 5%. Would the committee split the admin fee, cap at x%, or do away with the admin fee all together? M Nimm and I did an audit of the DNR files. Of the 72 counties, we could establish if 66 did or did not charge an admin fee. 4 counties have not yet responded. Of the 66 counties, 59% yes 41% no, average charge = \$1400, our charge is \$1100.

**Kelly** – we are fortunate to have a strong JCSA. We should support in any way we can. When trying to get people to support the GHA and promote tourism in the county. I would like to see, in lieu of an admin fee that we cover the insurance cost of \$900.

**Kelly** - Motioned to absorb the \$900 (for the Workman's Compensation Insurance) from the administration fee. Christensen seconded.

**Christensen** – what's in the fee balance if we take the \$900 from the admin fee?

**Kelly** – keep track of staff hours, but benefits the county if we absorb

**Payne** – charge us and then reimburse?

**Nehmer** – noted the field staff are doing trail inspection.

**Christensen** – hours?

**Wiesmann** – depends on season – 24-30hrs, plus annual meeting, plus admin fee for billing and final paperwork submittal. Parks department charges up to 5% of the total grant. In the past 3 years, the department has billed an average of \$1,100 against the grant.

**Nehmer** – noted the county has 182.7 miles of trail and \$2,283.75 would be the 5% cap and asked how much the committee want to charge for administrative expenses and if the department is to subtract the \$900?

**Kelly** – if trail inspection is integral, at a minimum it should come from the grant. It's a fuzzy area, unsure of how to address.

**Nehmer** – the committee could say it wants the department to take x% a year, or the committee could say the department will not charge any administrative expenses to the grant.

**Nehmer** – big picture, since 1981, all the funds that have passed through the grant and aid program equals approximately \$1.4m. Jefferson County Parks charges result in about \$4k of the \$1.4m.  
**Foelker** rescinded his second and **Kelly** changed the motion to say the parks department will replace the administrative charge with workman's compensation insurance costs. **Christensen** seconded. Motion passes 5/0  
**Bennett** – stated he did a presentation on the economic impact of snowmobiling in Jefferson County. He noted that just over \$20k was spent on snowmobiles and clothing resulting in a large monetary impact for the county. \$250/mile covers about 60% cost to maintain trails. The Alliance purchased another groomer for \$100k. The groomer is paid for through fundraisers and raffles. 3250 registered sleds in Jefferson County.

9. **Discussion and Possible Decision on Annual Snowmobile Resolution (2015-2016)**

**Nehmer** – DNR requires yearly by program. Does the board wish to continue in the program? If so, the department will work with Ward and take to Co Board.  
**Kelly** motioned to pass the resolution and continue the program. Foelker seconded. Motion passes on a 5/0 voice vote.

10. **Discussion and Possible Decision on Glacial River Trail Maintenance and Off-Season Use**

**Nehmer** – we have had requests to plow the GRT in an area just north of the Rock County line. Historically there has been debate about maintaining the trail and have had no trail maintenance during the off-season. We have limited staff, but we have requests. Guidance on what to do with our time.  
**Foelker** – could have big hours and equipment costs  
**Tietz** – noted the difficulty in agreeing to maintain a portion of the trail.  
**Christensen** – questioned if there is cross country skiing on the trail.  
**Wiesmann** – made mention of Fat Bikes  
**Kelly** – noted that we do not have a funding source to pay for off-season trail maintenance.  
**Christensen** – noted that those requesting off-season maintenance in the future are to contact supervisors to make request.  
**No action.**

11. **Discussion and Possible Decision on Rental Request of the Mason Log Home**

**Nehmer** – noted that a County Supervisor inquired about renting the Log Home for an employee group (out of Madison) and asked the committee if we wish to rent for meetings?  
**Wiesmann** – noted that there are doors to be hung with no estimated time of arrival on equipment. The cabin could accommodate, but not until everything is done.  
**Tietz** - questioned the potential charges for renting the facility and noted that it is a historic facility.  
**Wiesmann** – noted that it is not really intended for open floor meeting space. There is no electrical and no lighting. The windows will open, but no light. 19x15 inside.  
**Christensen** – suggested that perhaps a tent would be a better option.  
**Payne** – questioned the need for tables and chairs if rented.  
**Christensen** – asked if there are plans for another shelter?  
**No action taken.**

12. **Discussion and Possible Decision on Purchase of 2015 Ford Super Cab 4WD**

**Wiesmann** – noted the vendor is under state contract and the truck is similar to what we've had before. Purchases of over \$25,000 must go to the Co Board.  
**Foelker** motioned to approve the purchase of the 2015 Ford Super Cab 4WD, Christensen seconded.  
**Christensen** – questioned the principle use.  
**Wiesmann** – noted the primary uses are that the truck pulls mowers, trailers and groomers and has a standard box  
Motion carries on a 5/0 voice vote.

13. **Update on Watertown Outboarders Implementation Plan**

**Nehmer** – noted that the document is still under review in Madison  
**Matthews** – GHA Coordinator, DNR staff – stated that he has been told it is still the preference of the

department to transfer property to Jefferson County, but DNR attorneys want to make sure it's consistent. The plan has been forwarded to a planner who is taking a look at it. This is the first implementation plan in the GHA and DNR officials want to make sure it's done correctly. Once complete, it will serve as the model implementation plan. The planner is hoping to have it done next week to forward for review.

**Kelly** – noted that it is frustrating to have a property we can't use.

**Tietz** – hope to have done before the weather gets nice.

#### 14. **Update on Group Permits**

**Nehmer** – stated that the department requires group permits when groups of more than 20 people gather in one place, but are not renting a pavilion.

- a. Lake Mills Wellness Coalition
- b. "2 Rivers Night Event"
- c. "The Cold Hearted"
- d. Ares/Races Exercise – Rock Lake upper, overnight June 27-28, have not charged a fee in the past.

**Christensen** – nature of the Ares/Races Exercise event

**Nehmer** – noted that this is a field exercise

**Schroeder** – stated that he has attended past events. The event is quite impressive and the group is very appreciative of having the park to use.

#### 15. **Update on Easement(s) at Dorothy Carnes Park**

**Wiesmann** – the Dorothy Carnes Park parcel is about 248 acres. Part of the park is under an NRCS Easement with restrictions. Issues have been identified with easement lines and non-compliant areas. A wire fence to be removed, but will be paid for by NRCS. The department will also finalize and put into writing the management plan.

**Nehmer** – noted a recollection of easement boundaries with ½ of the paved portion of Jones lane in the easement. The department took fee title and easement lines were negotiated with individuals who are no longer involved. We are now relocating trails and benches with perhaps a one or two few acre swap.

#### 16. **Update on Dorothy Carnes Park East Parking Lot Design Engineering Services RFP**

**Wiesmann** – stated that a class 1 notice was published announcing a Request for Proposals for the Engineering of the parking lot. The staff has reviewed proposals and recommends RA Smith. The project may be at the one acre disturbance and storm water may have to be included. A portion grant eligible.

**Kelly** – noted that there are two lower bids than the one recommended. \$5000 difference.

#### 17. **Update on County Conservation Aids for Dorothy Carnes Park/Rose Lake State Natural Area**

**Wiesmann** – noted that the grant funds are used for prairie restoration.

**Nehmer** – the grant funds originate from old county "bounty" \$ used to benefit fish and wildlife, based on acreage of county.

#### 18. **Update on Citation(s) Issued at Jefferson County Dog Park**

**Nehmer** – stated that 4 citations were issued with the assistance of B Ward. Of the citations that made it to court, the department listened to the concerns of those cited. Mostly work out a plea.

#### 19. **Update on Dog Park Registrations 2003-2014**

**Nehmer** noted that there were 1772 registrations in 2014 and that since the opening of the park, there has been a consistent increase in registrations.

#### 20. **Update on Parks Employee Confrontation/Harassment in Crawfish River Park**

**Nehmer** – stated that a parks employee was exposed to undesirable citizen behavior at Crawfish River Park. The individual was aggressive and cursed at our employee. The department is working with the Sheriff's department and HR for training.

**Christensen** - questioned why the citizen was upset.

21. **Update on Handicapped Fishing Wharf (Blackhawk Island)**  
**Wiesmann** – noted that the project is moving forward and permits are in hand. The wharf is ready to go. Installing in spring, weather permitting.
22. **Update on Holzhueter Implementation Plan Process**  
**Nehmer** – noted that in 2011 the plan was first attempted and stopped. Tried again in 2012 & 2013. We are now working with Margaret Burlingham.
23. **Update on Glacial Heritage Area (GHA) Project**  
No updates. Will be attending MJS Sport Show & Canoecopia.
24. **Update on Fundraising for Interurban Trail**  
**Nimm** – noted that she has submitted the (required) letter of interest to People for Bikes and has also submitted a grant application to We Energies Foundation.  
**Nehmer** – met with individuals expressing an interest of participating as a funding partner. Individual expressed in potentially paying the full cost of \$5m to construct the trail. The department is looking to raise \$750k.  
**Tietz** – will be meeting with the Watertown TV channel.
25. **Update on Fundraising for Pohlmann Park**  
**Wiesmann** – noted that scout Austin Messerschmitt has raised \$2,437 for the park. The funds will be used to purchase a memorial bench, 2 other benches & a handicap accessible Cozy Cocoon.
26. **Update on 2014 Parks Department Budget**  
**Nehmer** – noted that he and Nimm are working on carry-over requests.
27. **Update on 2015 Parks Department Budget**  
No update
28. **Set next meeting date March 2, 2015 @ 9:30 am and possible agenda items.**
29. **Adjourn**  
Foelker motioned to adjourn at 10:58 a.m., Christensen seconded. Motion carries on a 5/0 voice vote.

**The Committee may discuss and/or take action on any item specifically listed on the agenda. Individuals requiring special accommodations for attendance at the meeting should contact the County Administrator at 920-674-7101, 24 hours prior to the meeting, so appropriate arrangements can be made.**

## Fun Birding Event! Save the date!

On Saturday, May 9<sup>th</sup> Rose Lake Friends will host a new, fun, free, informative public event at Dorothy Carnes County Park. The event is modelled after a popular, noncompetitive bird species count dubbed "The Big Sit" which is traditionally held annually the second week of October by bird clubs internationally. The Rose Lake Friends event will take place Saturday, May 9th from *dawn*(5:40am) to *dusk* (8:04pm) on the observation deck at the West Unit, Dorothy Carnes County Park. Early May is a time when Spring Bird migration is ramping up and the event should provide an excellent opportunity to observe a wide variety of bird species as they return to Wisconsin either to spend their Summer with us or migrate through to more northern nesting territory. The public is invited to participate. No reservations are necessary. Interested individuals should show up at the deck with binoculars. Participants do not need to stay the entire time the event is taking place. Rose Lake Friends will have free information available and will follow up with publication of the number of species counted and other information about the event.

## County parks great places to play in snow

Now that the snow is here, you might as well get outside and enjoy it. The Jefferson County Parks Department wants the public to know that its parks are great places to play in the snow.

You can sled at Korth County Park on the southwest shore of Rock Lake. At the top of the hill adjacent to the shelter is one of the area's nicest sledding hills.

You will have the added benefit of being able to enjoy a magnificent view of Rock Lake while you speed down the hill on your sled of choice. Korth Park is located off of County Highway S at the end of Korth Lane, west of the City of Lake Mills.

Did you know the Jefferson County Parks Department maintains cross-country skiing and hiking trails in four of its 16 parks boasting over 16.5 miles of groomed classic and skate ski trails, as well as groomed hiking trails?

Dorothy Carnes County Park East and West Access have designated ski and hiking/snowshoeing groomed trails for the 2014-15 season. The routes are posted at each of the trailhead facilities and are easy to follow.

East and West Carnes Park features moderate rolling hills with gentle grades, along with great views of Rose Lake and the surrounding glaciated plains. Trails are groomed and set for classic style cross-country skiing and take you through majestic oak forests, restored prairies and savanna grasslands.

There is plenty of parking, a

great shelter, and restrooms are available at the West trailhead facility. If you are not familiar with Carnes Parks East Access, head north from Fort Atkinson on Banker Road, and turn left onto Jones Lane.

The park begins at the end of the road, with more than 4.9 miles of groomed trails that meander throughout the property's beautiful landscape.

Carlin Weld County Park, located in southeastern Jefferson County, has an excellent trailhead facility with a shelter, restroom, large parking lot and a playground for the children. Cross-country ski trails are groomed and set for skate skiing with two miles of groomed trails following along the park's spring-fed ponds, restored grasslands, wetlands and savanna prairies.

Korth County Park, located on Rock Lake near Lake Mills, currently has over 2.25 miles of groomed trails which meander along the shore of Rock Lake and through the restored savanna, prairies and woodlands of the park. Park facilities include the Korth and Elm Point shelters, parking lots, and year-round bathrooms at the Elm Point Road park entrance.

The final location of the department's trail-grooming program is the county's highly acclaimed dog park, located north of Jefferson on State Highway 26. The Jefferson County Dog Park and Terri Tinsley Dog Exercise Area boast four separate dog exercise areas totaling 109 acres, with a total of 3.1 miles of groomed hiking trails.

The department recommends hiking or snowshoeing only in this park due to the high number of our four-legged friends running the grounds and creating unassuming obstacles. This is a great area to get out into the white stuff with your four-legged friends and stretch those neglected cold weather legs for some great outdoor fun.

Contact the Jefferson County Parks Department at (920) 674-7260 with any questions or concerns.





PO Box 2317  
Madison, WI 53701-2317

TOLL-FREE  
866.264.4096

FAX  
608.266.2452

E-MAIL  
info@wisconservation.org  
www.wisconservation.org

Joseph Nehmer  
320 S. Main Street  
Jefferson, WI 53549

February 4, 2015

Dear Joe,

I hope this letter finds you well. I wanted to introduce myself, and provide you with a summary of the 2014 performance for the Jefferson County Parks Endowment Fund.

I started with the Natural Resources Foundation in July, and am responsible for coordinating the funds in our Wisconsin Conservation Endowment. I will be your point of contact if you have any questions related to this fund.

Enclosed is the 2014 financial statement for the Jefferson County Parks Endowment Fund, which details the fund's beginning and ending balance, along with any additions, subtractions, and market adjustments.

Since its inception, the Wisconsin Conservation Endowment has grown to 68 funds with over \$4.1 million in assets, thanks in part to your generous and continued support. We look forward to continuing to work with you to build this fund and the Wisconsin Conservation Endowment, and thank you again for investing in the perpetual protection of Wisconsin's lands, waters and wildlife. If you have any questions regarding your fund, you can reach me at (608) 266-1430, or by email at [caitlin.williamson@wisconsin.gov](mailto:caitlin.williamson@wisconsin.gov).

All the best,

Caitlin Williamson  
Program & Development Coordinator



**Board of Directors**

*Dave Adam*  
*James P. Bennett*  
*Linda Bochert*  
*Bruce Braun*  
*Scott Craven*  
*Rebecca Haefner*  
*Rita Hayen*  
*Martin Henert*  
*Jim Hubing*  
*Kristine Krause*  
*Diane Humphrey Lueck*  
*Mark LaBarbera*  
*William Lunney*  
*Peg Mallery*  
*Jim Matras*  
*Thomas Olson*  
*Ron Semmann*  
*William Smith*  
*Michael Williamson*

**Emeritus**

*Darrell Bazzell*  
*Dan Chabot*  
*Anthony Earl*  
*Robert Froehke*  
*David Ladd*  
*Tom Lochner*  
*Thomas Lyon*  
*Howard Mead*  
*Thomas Schmidt*  
*Toby Sherry*  
*Christine Thomas*  
*Todd Tiefenthaler*  
*Albert Toma*

**Honorary Emeritus**

*C.D. Buzz Besadny*  
*Collins Ferris*  
*Daniel T. Flaherty*  
*Paul Hassett*  
*Warren Knowles*  
*Cliff Messinger*  
*Gaylord Nelson*  
*Dair J. Stewart*  
*Daniel Trainer*  
*Margaret Van Alstyne*  
*Sally Whiffen*  
*Nash Williams*

**Ex-Officio**

*Cathy Stepp*  
*Preston D. Cole*

**Executive Director**

*Ruth Oppedahl*



Wisconsin Conservation Endowment  
**Jefferson County Parks Endowment**  
 December 31, 2014

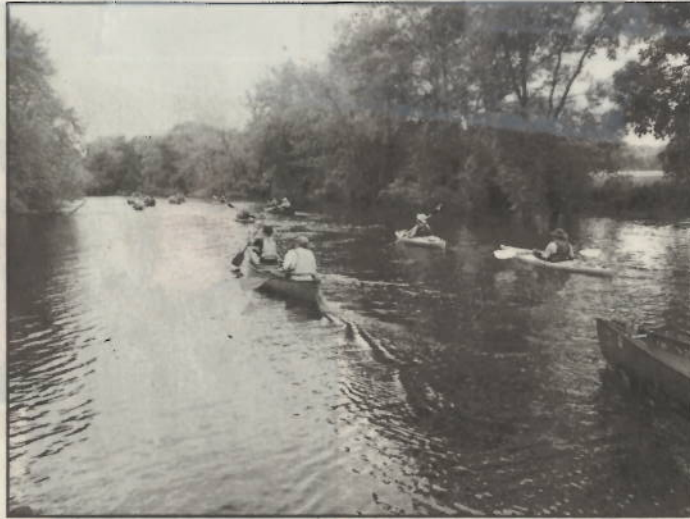
	Beginning Balance January 1, 2014	\$	15,738.66
 <u>Additions</u>			
	Contributions		-
	Dividends and Interest Earned <sup>1</sup>		147.39
	<b>Total</b>		<b>15,886.05</b>
 <u>Subtractions</u>			
	Distributions		-
	NRF Administrative Fees		(158.43)
	<b>Total</b>		<b>15,727.63</b>
 <u>Market Adjustments</u>			
	Realized Gains on Investments <sup>1</sup>		1,146.26
	Unrealized Gains on Investments <sup>1</sup>		(418.79)
	<b>Ending Balance</b>	<b>\$</b>	<b>16,455.09</b>

<sup>1</sup> Dividends, interest and market gains & losses are allocated monthly  
 based on the size of the fund relative to the endowment portfolio

<u>Historical Base</u>	Contributions Since Inception		12,078.00
------------------------	-------------------------------	--	-----------

MONDAY, FEBRUARY 9, 2015

DAILY JEFFERSON COUNTY UNION



**BARK RIVER PADDLE** — The Friends of Glacial Heritage Area is organizing the GHA Paddle Volunteer Corps to assist Jefferson County Parks Department in watertrail maintenance projects. The Corps is open to all, and volunteers can choose to participate as little or as much as schedules permit. Further, even though the main purpose of the group will be the removal of debris and garbage from waterways, participants also are planning to organize paddles throughout the season. Contact Clare at [friendsofgha@gmail.com](mailto:friendsofgha@gmail.com) or Kevin at [kevinw@jeffersoncounty-wi.gov](mailto:kevinw@jeffersoncounty-wi.gov) to be added to the volunteer list. The Paddle Volunteer Corps is a great way for residents to help in their community and meet other paddlers; in addition, it also is a great way for folks to complete volunteer requirements that might be part of civic groups or college requirements. The Friends of GHA has worked collaboratively with many organizations and looks forward to such opportunities with the Corps. Greater Jefferson County is home to many great paddling sites such as the Bark River, Rock River, Crawfish River, Koshonong Creek and numerous lakes. For more information about Glacial Heritage Area watertrails including put-in and take-out locations, pick up a free map at Jefferson County Parks Department, 311 S. Center Ave., Court-house-Room 204, Jefferson, or get an online copy at [www.glacialheritagearea.org](http://www.glacialheritagearea.org). The Friends of GHA is a nonprofit, volunteer group supporting the outdoors and communities in Greater Jefferson County. Through local parks, trails, wildlife areas and watertrails, the GHA connects people to the communities and natural beauty around them. Pictured above, Friends of GHA paddle down the Bark River in June 2014. — Photo by Kevin Wiesmann.

## **County OKs licensing pact for interurban trail - Daily Jefferson County Union: News**

### **County OKs licensing pact for interurban trail**

**By Amy Smith Union staff writer | Posted: Wednesday, February 11, 2015 9:45 am**

JEFFERSON — The Jefferson County Board of Supervisors on Tuesday approved a licensing agreement with Wisconsin Electric Power Co. for the purpose of constructing a segment of an interurban bicycle trail that would connect Watertown and Oconomowoc.

After almost six years of negotiations, Parks Department director Joe Nehmer said, the Wisconsin Department of Natural Resources and Wisconsin Electric, doing business as We Energies, were able to come to an agreement this month on a 15-year lease, allowing the rest of the project to move forward.

The Jefferson County Parks Department plans to place a recreational trail for hiking, biking and cross-country skiing on a right-of-way owned by We Energies. The 11-mile trail would be located between Humboldt Street in Watertown and the City of Oconomowoc. The off-road, paved trail connection will be built on the former interurban rail line, which at one time connected Watertown to Milwaukee.

The American Transmission Company operates the electric transmission facilities on the corridor. Previous meetings between the two parties made it clear that all sides favored a recreational use for the land; however, some concerns were voiced about the cost of repairs to electrical lines running through the area after the trail had been constructed.

Negotiations between the DNR and power company hit a snag when the state agency attempted to seek a license giving it use of the land, however. The DNR requested a 25-year agreement for the land, but We Energies said its policy is to offer municipalities a five-year renewable lease for recreational purposes.

Nehmer noted that he is aware of many surrounding counties that have entered into 15-year agreements with We Energies without any issues.

Before approving the agreement, Supervisor Amy Rinard questioned the need for the board's approval before the Parks Department has raised the funds for the project.

The cost of developing the entire trail, from Waterloo west to the county line, is proposed through available state grants. However, Nehmer has said that most grant awards would

not consider the project for funding before the entire project area was available as a package.

“We would like to have this in hand to be able to say, ‘Yes, we are ready to go,’” Nehmer said.

The Parks Department also has approved the allocation of the remaining Carol Liddle bequest funds to be used toward the proposed interurban bike trail.

The project carries an estimated pricetag of \$1.4 million.

This year, a \$700,000 DNR grant was awarded to the City of Platteville rather than Jefferson County after that city was able to pledge \$200,000 toward its project.

Nehmer said the Parks Department hopes that with the pledge of \$81,000 from the Carol Liddle funds, the county will be successful in acquiring the grant in 2015.

With the backing of the grant, the county hopes to fund- raise the remaining \$500,000 that would be needed to complete the trail without using any county tax levy dollars.

“The entire proposal is contingent on raising the funds,” Nehmer added.

The application for the DNR grant is due May 1 and would be awarded sometime next fall.

But even if a grant for the project is approved, it is likely that construction on the trail would not begin for several years until planned construction in the area had been completed.

The Parks Department, working jointly with the Glacial Heritage Area group, also is developing a trail to run between Waterloo and Watertown, although some uncertainty remains about the exact route it will take.

That trail, a key link allowing bikers to ride continuously from Madison to the shore of Lake Michigan, likely will develop in stages from each city toward the center of the county, allowing the route to change as it develops.

Other business

Also, Tuesday, the board:

- Approved a three-year exclusive signage marketing partnership agreement with Miller/Ott Schweitzer Distributors Inc.

According to the Jefferson County Fair Park staff, about \$105,000 in revenue is generated each year from the sponsorship.

The resolution first was introduced to the county board at its Dec. 19, meeting, but was referred back to the Fair Park Committee for changes.

- Approved an amendment to the personnel ordinance to comply with changes to the Health Insurance Portability and Accountability Act.
- Authorized an application by the Jefferson County Parks Department for Outdoor Recreation Aid Grants.



Like us:  
Watertown Daily Times

www.wdtimes.com

## JEFFERSON COUNTY

# Board takes next step down trail

BY STEVE SHARP  
steves@wdtimes.com

JEFFERSON — The Jefferson County Board of Supervisors on Tuesday evening approved a resolution that goes one step further toward paving the way for the extension of an interurban recreational trail from Watertown to Oconomowoc.

Having no negative fiscal impact on the county, the board of supervisors agreed Tuesday to authorize county Administrator Ben Wehmeier to enter into a lease agreement with Wisconsin Electric Power Company, or We Energies, for the purpose of Jefferson County eventually constructing a segment of the interurban trail from Watertown eastward.

In an executive summary of the resolution that was approved, the parks committee told its fellow supervisors that, as a result of the county parks department planning to place the recreational trail for hiking, running, biking and cross country skiing on right of way owned by We Energies, the measure was needed. The proposed trail would be 10.96 miles in total length and located between Humboldt Street in the city of Watertown and

(Continued on back, col. 3)

## Recreational trail —

(Continued from page 1)

River Road in the town of Watertown.

This off-road, paved trail connection could be built on the former interurban rail line that connects Watertown to Oconomowoc. The path cross-section would ideally consist of a 10-foot-wide asphalt surface with 2-foot-wide aggregate shoulders. An 8-inch stone base with 3-inch asphalt layer would be used. The project would be located primarily in Jefferson County in a 10-mile section, with 1 mile in Waukesha County.

The old interurban rail line, which, at one time connected Watertown with Milwaukee, is now a utility corridor owned by We Energies. American Transmission Company (ATC) operates the electric transmission facilities on the corridor. The Wisconsin Department of Natural Resources and We Energies have reached an agreement for the use of the corridor by recreationalists.

The trail would give its users the opportunity to move safely from the northern end of the Glacial River Trail in Watertown east to the shores of Lake Michigan and connecting to trails such as the Hank Aaron Trail in Milwaukee.

The resolution was approved by a vote of 24-3 with Carl Zentner, George Jaeckel and Dwayne Morris dissenting and three absent.

Augie Tietz of the Jefferson County Parks Committee, a longtime, vocal proponent of the county acquiring permission to use the trail, said today he is glad to see the trail moving forward.

"Since I was involved, it seems it's been about four years in the making," Tietz said, not-

ing money still needs to be raised to actually put the trail in place and a fund has been established to do so. "I think it should be a very positive result. When you have a 24-3 majority in favor of a resolution like this, that is telling you something. I feel very confident we will get the funding to make this happen, if not from the DNR, then from somewhere else."

Tietz said the county is also investigating conducting a TV show to promote a fund drive it already has established.

"We are talking with a number of potential donors, so things are looking positive," Tietz said. "We have the fund drive going and it is at \$84,000 at the moment."

Tietz said if all goes well, work on Phase I of the trail could begin early next year and it could be in use by the public as early as the middle of 2017.

"That portion of the trail, Phase I, would just cross the river and terminate at River Road," Tietz said, noting the cost of that 2.26-mile leg of the trail is estimated at \$1,420,946. Much of this — \$657,940 — would be spent replacing a bridge over the Rock River. Total cost for the trail as it would run from Watertown to Oconomowoc could amount to approximately \$5.5 million.

Persons who wish to contribute to the county fund drive are asked to write checks to the Jefferson County Parks Department, with the notation they are intended for the Watertown to Oconomowoc Trail.

Also approved Tuesday was a Jefferson County Fair Park sign agreement and an authorization of an application for an outdoor recreation aids grant to cover the costs of snowmobile trail maintenance in the county.

	Bobcat	John Deer	Case	New Holland
Cost + municipal Discount	\$31,239.00	\$ 36,989.00	\$34,358.00	
Trade In Value	\$17,500.00	\$ 17,500.00	\$17,500.00	
Final	\$13,739.00	\$ 19,489.00	\$16,858.00	\$19,982.00

**Bid Spec:**

61 HP

Tier 4

Backup Alarm

Power Attach

Hi-Flow

Cold Weather Package

7 Pin Electric

14 Pin Electric

Severe Duty Tires

1,900+ lb lift capacity





## Product Quotation

Quotation Number: 21957D022068

Date: 2015-02-02 12:07:17

Ship to	Bobcat Dealer	Bill To
JEFFERSON CO. PARKS DEPT. Attn: Kevin Wiesmann 1555 S INDUSTRIAL DRIVE JEFFERSON, WI 53549 Phone: 1-920-674-7260 Fax: 1-920-674-7585	Mid-State Group, Inc, Watertown, WI N8690 HIGH ROAD WATERTOWN WI 53094-9405 Phone: (920) 261-8118 Fax: (920) 261-8172 ----- Contact: Ken Mehringer Phone: 9202618118 Fax: 920-261-8172 Cellular: 920-988-6827 E Mail: kmehring@midstateequipment.com	JEFFERSON CO. PARKS DEPT. Attn: Kevin Wiesmann 1555 S INDUSTRIAL DRIVE JEFFERSON, WI 53549 Phone: 1-920-674-7260 Fax: 1-920-674-7585

61 HP

1950 lb app capacity

6480 lb app weight

Description	Part No	Qty	Price Ea.	Total
<b>S570 T4 Bobcat Skid-Steer Loader</b>	M0259	1	\$39,192.00	\$39,192.00
61.0 HP Tier 4 Turbo Diesel Engine	Lights, Front & Rear			
Auxiliary Hydraulics: Variable Flow	Operator Cab			
Backup Alarm	Includes: Adjustable Cushion Seat, Top & Rear			
Bob-Tach	Windows, Parking Brake, Seat Bar & Seat Belt			
Bobcat Interlock Control System (BICS)	Roll Over Protective Structure (ROPS) meets SAE-J1040			
Controls: Bobcat Standard	& ISO 3471			
Engine/Hydraulic Systems Shutdown	Falling Object Protective Structure (FOPS) meets SAE-			
Glow Plugs (Automatically Activated)	J1043 & ISO 3449, Level I; (Level II is available			
Horn	through Bobcat Parts)			
Instrumentation: Engine Temperature & Fuel Gauges,	Spark Arrestor Exhaust System			
Hourmeter, RPM and Warning Lights	Tires: 10-16.5, 8 PR, Bobcat Standard Duty			
Lift Arm Support	Warranty: 12 Months, Unlimited Hours			
Lift Path: Vertical				
A51 Option Package	M0259-P01-A51	1	\$4,930.00	\$4,930.00
Cab Enclosure with Heat and AC	Power Bob-Tach			
Suspension Seat	Cab Accessories Package			
Two Speed, Cold Weather Package	M0259-P03-F20	1	\$1,741.00	\$1,741.00
10-16.5, 10 PR, Severe Duty Tires	M0259-R09-C04	1	\$929.00	\$929.00
Attachment Control Kit, 14-Pin (G-, K- and M-Series	6733136	1	\$409.00	\$409.00
Loaders)				
Attachment Control, 7 Pin (M-Series)	7128426	1	\$183.00	\$183.00
<b>Total of Items Quoted</b>				<b>\$47,384.00</b>
Dealer P.D.I.				<b>\$250.00</b>
Freight Charges				<b>\$450.00</b>
Dealer Assembly Charges				<b>\$213.00</b>
Trade-in Bobcat S185 serial number 530321293				<b>(\$17,500.00)</b>
Discount municipal discount from Bobcat				<b>(\$17,058.00)</b>
<b>Quote Total - US dollars</b>				<b>\$13,739.00</b>

**Notes:**

quote valid until 02/28/2015

All prices subject to change without prior notice or obligation. This price quote supersedes all preceding price quotes. Customer must exercise his purchase option within 30 days from quote date.



CNH America LLC

# Johnson Tractor, Inc.

1110 N US Hwy 14  
Janesville, WI 53546  
608-756-1257

1030 S 7<sup>th</sup> Street  
Rochelle, IL 61068  
815-562-2135

Model SR175	Serial Number NEM466412	Unit Number LD1401
-------------	-------------------------	--------------------

## Base Machine Price

**\$40,639.00**

SPECIAL OFFER	NORMAL	NORMAL OFFER
MARCA	CASE	CASE
MODELO	SR175	SR175
VERSION	T4BR	TIER 4 B REGULATED

## Options

**\$12,305.00**

DRIVE CONTROL TYPE	761040	HAND CONTROLS (H-PATTERN)	\$0.00
CONTROLS LEVEL	761029	2 SPEED MECHANICAL CONTROLS	\$1,586.00
CAB	761045	ENCLOSED CAB WITH HEATER & AC	\$6,069.00
CAB SEAT	761052	SUSPENSION SEAT (VINYL)	* - \$411.00
MAT	761151	FLOOR MAT MECHANICAL HAND	\$0.00
REAR DOOR	761075	REAR DOOR	\$0.00
COUPLERS	726004	HYDRAULIC COUPLER	\$1,126.00
BLOCK HEATER	761048	BLOCK HEATER (120V)	\$161.00
LANGUAGE OPTIONS	761085	ENGLISH USA	\$0.00
OPTION PACKAGES	761033	PERFORMANCE PACKAGE	\$1,257.00
TIRE OPTIONS	8502007	10X16.5 SEVERE DUTY (64 OTW)	\$474.00
BUCKETS	761131	66" LOW PROFILE EXTENDED	* - \$989.00
BOLT ON CUTTING EDGE	761146	66" BOLT ON CUTTING EDGE	* - \$232.00

**Total \$52,944.00**

REMOVE \* - 1632.00

LIST 51312.00

LESS DISCOUNT - 16954.00

YOUR BID \$34358.00

**TRIEBOLD IMPLEMENT, INC.**

18619 WILLIS RAY ROAD  
 WHITEWATER, WISCONSIN 53190  
 PHONE: (262) 473-2090 1-800-472-2093  
 www.triebold.com



CUSTOMER NAME: Jefferson County Parks DATE: 2-18-15 QUOTE VALID FOR 30 DAYS  
 ADDRESS: 1555 Industrial Dr. CITY: Jefferson, WI SALESMAN: Charlie Keiser PHONE: 920-728-2663  
 STATE: WI

DESCRIPTION	PRICE
2015- New Holland L220 Skidsteer Loader (Tier 4 Final) enclosed cab w/heater & A/C - (2 Speed) Mechanical Controls - Vinyl Suspension Seat, Turn Signals - & Rotary Beacon, High Flow Plus Package (includes - Ride Glide, Hydr. Self Leveling) Front Electric Plugs - 14-pin & 7-pin - Engine Block Heater, 10X16.5 Severe Duty Tires - Hydraulic Bucket Coupler - (NO Bucket)	List Price \$ 55,074.00
Municipal Discount Applied Trade Balance	\$ 19,982.00

TRADE-IN	TRADE ALLOWANCE
2008 Bobcat S185 Skidsteer, Cab, heat & A/C - Hydr. Coupler - # 53032/293 - No-Bucket	
<b>TOTAL</b>	



**Quote Summary**

**Prepared For:**  
Jefferson County Parks Dept  
320 S Main St  
Jefferson, WI 53549

**Prepared By:**  
Bryan Hanson  
Mid-state Equip. Jackson  
3660 Scenic Road  
Jackson, WI 53037  
Phone: 262-677-8400  
bhanson@midstateequipment.com

**Quote Id:** 10870591  
**Created On:** 28 January 2015  
**Last Modified On:** 28 January 2015  
**Expiration Date:** 27 February 2015

Equipment Summary	Suggested List	Selling Price	Qty	Extended
JOHN DEERE 318E SKID STEER <i>63 HP @ 2,500 rpm</i>	\$ 50,252.00	\$ 36,989.29 X	1 =	\$ 36,989.29
<b>Equipment Total</b>				<b>\$ 36,989.29</b>

*1,950 lb opp Capacity  
7,000 lb opp weight*

**Quote Summary**

Equipment Total	\$ 36,989.29
SubTotal	\$ 36,989.29
Total	\$ 36,989.29
Down Payment	(0.00)
Rental Applied	(0.00)
<b>Balance Due</b>	<b>\$ 36,989.29</b>

*Trade in Bobcat S185*

*36989.29*  
*17500.00*  

---

*\$ 19489.29*

Salesperson : X \_\_\_\_\_

Accepted By : X \_\_\_\_\_

**From:** [Joe Nehmer](#)  
**To:** [Mary Nimm](#)  
**Subject:** FW: Koshkonong Mounds Rd Right-of-way  
**Date:** Wednesday, February 25, 2015 9:13:02 AM  
**Attachments:** [875585.PDF](#)

---

---

**From:** Jim Morrow  
**Sent:** Thursday, February 19, 2015 9:48 AM  
**To:** Joe Nehmer  
**Cc:** Andy Erdman  
**Subject:** Koshkonong Mounds Rd Right-of-way

Joe,

I received a request from the Town of Koshkonong to determine the right-of-way of Koshkonong Mounds Road from the corner of Vinnie Ha Ha Road to the Koshkonong Mounds Resort in the West. The Town is looking to rebuild the roadway sometime in the future. However, Indian Mounds County Park is along this roadway. Would the Parks Department have a problem with me doing this survey for the Town? From my records research, I know that the actual road pavement is potentially on Park land (See attached Woodman Survey).

Thanks,

Jim Morrow

Jefferson County Surveyor

311 S. Center Ave., Room 103

Ph: 920-674-7147

Fax: 920-674-7368

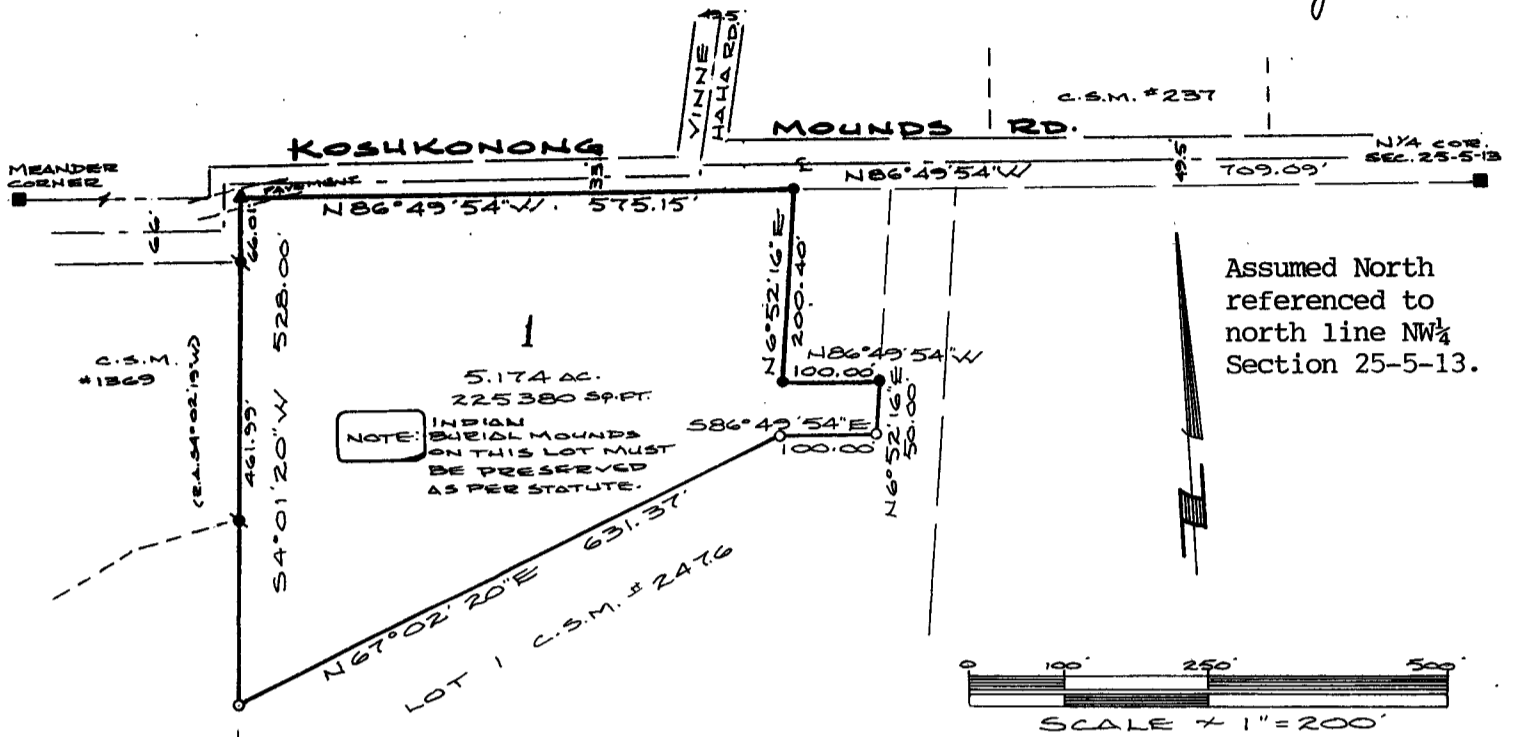


Stock No. 26273

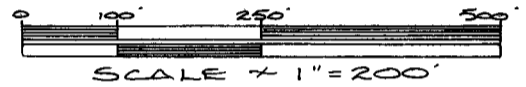
# CERTIFIED SURVEY MAP

Part of the NE $\frac{1}{4}$  of the NW $\frac{1}{4}$  of Section 25, T5N, R13E,  
Town of Koshkonong, Jefferson County, WI

*Vol 9 Page 83*



Assumed North  
referenced to  
north line NW $\frac{1}{4}$   
Section 25-5-13.



- Found 6"x6" Stone Monument
- ▲ Found Railroad Spike
- Found 1 $\frac{1}{4}$ " Iron Pipe
- Found 1" Iron Pipe
- Set 1"x24" Iron Pipe Weighing 1.13#/L.F.

Approved by the Planning and Zoning Committee  
of Jefferson County.

Date 7-18-91

*Bruce Haukom*  
Bruce Haukom, Administrator

### SURVEYOR'S CERTIFICATE

I, James B. Woodman, Registered Land Surveyor, hereby certify that in full compliance with Chapter 236.34, Wisconsin statutes and the subdivision regulations of Jefferson County and by the direction of Hugh Highsmith, owner, this land has been surveyed, divided and mapped under my responsible direction and supervision and is part of Lot 1, Certified Survey Map #2476 recorded in Volume 9 Certified Surveys pages 51 and 52, in the NE $\frac{1}{4}$  of the NW $\frac{1}{4}$  of Section 25, T5N, R13E, Town of Koshkonong, Jefferson County, Wisconsin, to-wit:

Commencing at the N  $\frac{1}{4}$  corner of said Section 25; thence N86° 49' 54" W, along the north line of said NW $\frac{1}{4}$ , also being the south line of Koshkonong Mounds Road, 709.09 feet to the point of beginning; thence continue N86° 49' 54" W, along said south line, also being the north line of said Lot 1, Certified Survey Map #2476, 575.15 feet to the northwest corner thereof; thence S4° 01' 20" W, along the west line of said Lot 1, 528.00 feet; thence N67° 02' 20" E, 631.37 feet; thence S86° 49' 54" E, 100.00 feet; thence N6° 52' 16" E, 50.00 feet; thence N86° 49' 54" W, 100.00 feet; thence N6° 52' 16" E, 200.40 feet to the point of beginning, containing 5.174 acres.

Date 7-17-91  
REV. 7-18-91

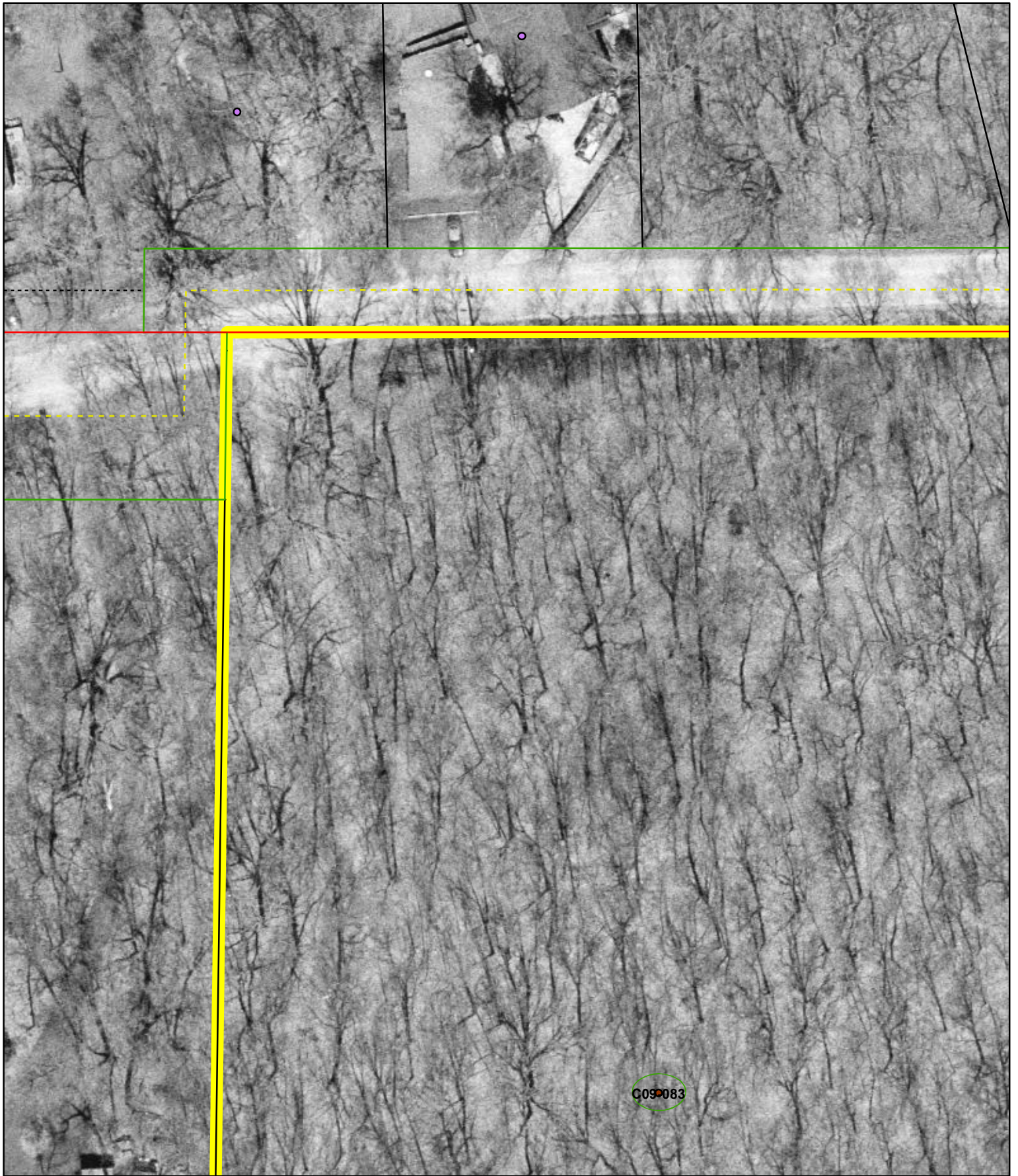
*James B. Woodman*  
James B. Woodman  
Registered Land Surveyor

Received for recording this 18th day of July, 1991 at 3:40 o'clock P.M. and recorded in Volume 9 of Certified Surveys of Jefferson County at page 83.

Document No. 875585

Certified Survey Map No. 2497

*Phyllis J. Hess*  
Phyllis J. Hess, Register of Deeds



NW Corner  
Indian Mounds County Park



JEFFERSON COUNTY PARK COMMITTEE  
2015 GROUP MEETING

ALTPETER  
 BICENTENNIAL  
 BURNT VILLAGE  
 BUSSEYVILLE  
 CARLIN WELD  
 COLD SPRING CREAMERY

DOROTHY CARNES  
 GARMAN NATURE PRESERVE  
 GLACIAL RIVER TRAIL  
 KANOW  
 KORTH -KORTH LN/ELM PT  
 POHLMANN

ROCK LAKE -Lower  
 ROCK LAKE - Upper  
 ROCK RIVER  
 ROME POND  
 WELCOME TRAVELERS  
 Jefferson Co. Dog Park

DATE: May 9, 2015

HOUR OF DAY: Dawn (5:40am) - Dusk (8:04pm)

PARTY SIZE:

PARTY PURPOSE: Bird Count Open to the Public

PARTY RESPONSIBLE FOR SECURING PERMIT: Friends of Rose Lake

ADDRESS

Jefferson WI 53549

TELEPHONE:

THE HOLDERS OF THIS PERMIT ASSUME THE RISK OF PROPERTY DAMAGE, PERSONAL INJURY OR BODILY INJURY RESULTING IN ANY WAY FROM THEIR USE OF THE PARK AND AGREE TO IDEMNIFY AND HOLD JEFFERSON COUNTY HARMLESS FROM ALL COSTS OR LOSSES RESULTING FROM THIS USE OF THE PARK.

THE HOLDER OF THIS PERMIT IS NOT ENTITLED TO EXCLUSIVE USE OF ANY FACILITY WITHIN THE PARK.

---

JOSEPH W. NEHMER, DIRECTOR  
 JEFFERSON COUNTY PARKS DEPT.  
 320 SOUTH MAIN STREET  
 COURTHOUSE/ROOM 204  
 JEFFERSON WI 53549  
 920-674-7260



JEFFERSON COUNTY PARK COMMITTEE  
2015 GROUP MEETING

<input type="checkbox"/> ALTPETER	<input type="checkbox"/> DOROTHY CARNES	<input type="checkbox"/> ROCK LAKE -Lower
<input type="checkbox"/> BICENTENNIAL	<input type="checkbox"/> GARMAN NATURE PRESERVE	<input type="checkbox"/> ROCK LAKE - Upper
<input type="checkbox"/> BURNT VILLAGE	<input type="checkbox"/> GLACIAL RIVER TRAIL	<input type="checkbox"/> ROCK RIVER
<input type="checkbox"/> BUSSEYVILLE	<input type="checkbox"/> KANOW	<input type="checkbox"/> ROME POND
<input type="checkbox"/> CARLIN WELD	<input type="checkbox"/> KORTH -KORTH LN/ELM PT	<input type="checkbox"/> WELCOME TRAVELERS
<input type="checkbox"/> COLD SPRING CREAMERY	<input type="checkbox"/> POHLMANN	<input checked="" type="checkbox"/> Jefferson Co. Dog Park

DATE: February 8, 2015 and Second Sunday of Each Month During 2015.

HOUR OF DAY: Approximately 4 Hours. Noon - 4:00 pm

PARTY SIZE: 30

PARTY PURPOSE: Siberian Husky Group

PARTY RESPONSIBLE FOR SECURING PERMIT: Cheryl Stegman

ADDRESS: N5257 Martin Rd  
Jefferson WI 53549

TELEPHONE: 920-650-7841

NOTE: ALL DOGS MUST HAVE 2015 DOG TAG OR DAILY PERMIT

THE HOLDERS OF THIS PERMIT ASSUME THE RISK OF PROPERTY DAMAGE, PERSONAL INJURY OR BODILY INJURY RESULTING IN ANY WAY FROM THEIR USE OF THE PARK AND AGREE TO IDEMNIFY AND HOLD JEFFERSON COUNTY HARMLESS FROM ALL COSTS OR LOSSES RESULTING FROM THIS USE OF THE PARK.

THE HOLDER OF THIS PERMIT IS NOT ENTITLED TO EXCLUSIVE USE OF ANY FACILITY WITHIN THE PARK.

---

JOSEPH W. NEHMER, DIRECTOR  
JEFFERSON COUNTY PARKS DEPT.  
320 SOUTH MAIN STREET  
COURTHOUSE/ROOM 204  
JEFFERSON WI 53549  
920-674-7260

JEFFERSON COUNTY PARKS DEPARTMENT  
2015 GROUP MEETING

- |   |  |   |
|---|--|---|
| <input type="checkbox"/> ALTPETER               | <input type="checkbox"/> GLACIAL RIVER TRAIL       | <input type="checkbox"/> ROCK LAKE -Lower       |
| <input type="checkbox"/> BURNT VILLAGE          | <input type="checkbox"/> INDIAN MOUND/TRAIL        | <input type="checkbox"/> ROCK LAKE - Upper      |
| <input type="checkbox"/> CARLIN WELD            | <input type="checkbox"/> JOY                       | <input type="checkbox"/> ROCK RIVER             |
| <input type="checkbox"/> COLD SPRING CREAMERY   | <input type="checkbox"/> KANOW                     | <input type="checkbox"/> ROME POND              |
| <input type="checkbox"/> DOG PARK               | <input checked="" type="checkbox"/> DOROTHY CARNES | <input type="checkbox"/> KORTH -KORTH LN/ELM PT |
| <input type="checkbox"/> GARMAN NATURE PRESERVE | <input type="checkbox"/> POHLMANN                  | <input type="checkbox"/> WELCOME TRAVELERS      |

DATE: Saturday, February 28, 2015

HOUR OF DAY: 6:00 pm - 8:00 pm

PARTY SIZE: 20-30

PARTY PURPOSE: '2 rivers night event' - ski, snowshoe, hike, fat bike, hangout

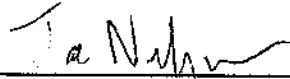
PARTY RESPONSIBLE FOR SECURING PERMIT:  
2 Rivers Bicycle and Outdoors - Ben Weiss

ADDRESS: 33 W. Sherman Ave, Fort Atkinson  
TELEPHONE: 920-563-2222  
EMAIL: bweiss85@gmail.com

HOLDERS OF THIS PERMIT ASSUME THE RISK OF PROPERTY DAMAGE, PERSONAL INJURY OR BODILY INJURY RESULTING IN ANY WAY FROM THEIR USE OF THE PARK AND AGREE TO IDEMNIFY AND HOLD JEFFERSON COUNTY HARMLESS FROM ALL COSTS OR LOSSES RESULTING FROM THIS USE OF THE PARK.

THE HOLDER OF THIS PERMIT IS NOT ENTITLED TO EXCLUSIVE USE OF ANY FACILITY WITHIN THE PARK.

JOSEPH W. NEHMER, DIRECTOR

  
 \_\_\_\_\_  
 Jefferson County Parks  
 311 South Center Street  
 COURTHOUSE/ROOM 204  
 JEFFERSON WI 53549  
 920-674-7260

Jefferson County  
Parks Totals

Date Ran 2/27/2015  
Period 12  
Year 2014

Business Unit	Description	Current Period Actual	Current Period Budget	YTD Actual	YTD Budget	Prorated Variance	Total Budget	Annual Remaining	Percentage Of Budget
1801 Parks	Revenue	(27,266.93)	(5,331.67)	(81,720.49)	(63,980.00)	(17,740.49)	(63,980.00)	17,740.49	127.73%
	Expenditures	88,772.39	81,332.11	814,135.12	975,985.26	(161,850.14)	975,985.26	161,850.14	83.42%
	Other Finances	-	-	-	-	-	-	-	#DIV/0!
<b>Total</b>		<b>61,505.46</b>	<b>76,000.44</b>	<b>732,414.63</b>	<b>912,005.26</b>	<b>(179,590.63)</b>	<b>912,005.26</b>	<b>179,590.63</b>	<b>80.31%</b>
1806 Carol Liddle	Revenue	(6.32)	(12.50)	(74.44)	(150.00)	75.56	(150.00)	(75.56)	49.63%
	Expenditures	-	6,787.13	-	81,445.55	(81,445.55)	81,445.55	81,445.55	0.00%
	Other Finances	-	12.50	-	150.00	(150.00)	150.00	150.00	0.00%
<b>Total</b>		<b>(6.32)</b>	<b>6,787.13</b>	<b>(74.44)</b>	<b>81,445.55</b>	<b>(81,519.99)</b>	<b>81,445.55</b>	<b>81,519.99</b>	<b>-0.09%</b>
1809 Carlin Weld	Revenue	-	(4.17)	(322.99)	(50.00)	(272.99)	(50.00)	272.99	645.98%
	Expenditures	-	842.42	6,850.21	10,109.00	(3,258.79)	10,109.00	3,258.79	67.76%
	Other Finances	-	-	-	-	-	-	-	#DIV/0!
<b>Total</b>		<b>-</b>	<b>838.25</b>	<b>6,527.22</b>	<b>10,059.00</b>	<b>(3,531.78)</b>	<b>10,059.00</b>	<b>3,531.78</b>	<b>64.89%</b>
1811 Korth Park	Revenue	-	-	-	-	-	-	-	#DIV/0!
	Expenditures	-	-	-	-	-	-	-	#DIV/0!
	Other Finances	-	-	-	-	-	-	-	#DIV/0!
<b>Total</b>		<b>-</b>	<b>-</b>	<b>-</b>	<b>-</b>	<b>-</b>	<b>-</b>	<b>-</b>	<b>#DIV/0!</b>
1812 Carnes Park	Revenue	-	(2,354.67)	(32,383.38)	(28,256.00)	(4,127.38)	(28,256.00)	4,127.38	114.61%
	Expenditures	-	13,802.50	32,207.23	165,630.00	(133,422.77)	165,630.00	133,422.77	19.45%
	Other Finances	-	4,943.33	-	59,320.00	(59,320.00)	59,320.00	59,320.00	0.00%
<b>Total</b>		<b>-</b>	<b>16,391.17</b>	<b>(176.15)</b>	<b>196,694.00</b>	<b>(196,870.15)</b>	<b>196,694.00</b>	<b>196,870.15</b>	<b>-0.09%</b>
1813 Park Buildings	Revenue	-	-	-	-	-	-	-	#DIV/0!
	Expenditures	1,550.52	1,329.25	14,915.85	15,951.00	(1,035.15)	15,951.00	1,035.15	93.51%
	Other Finances	-	-	-	-	-	-	-	#DIV/0!
<b>Total</b>		<b>1,550.52</b>	<b>1,329.25</b>	<b>14,915.85</b>	<b>15,951.00</b>	<b>(1,035.15)</b>	<b>15,951.00</b>	<b>1,035.15</b>	<b>93.51%</b>
1814 Garman Nature	Revenue	-	-	-	-	-	-	-	#DIV/0!
	Expenditures	-	1,083.33	11,918.48	13,000.00	(1,081.52)	13,000.00	1,081.52	91.68%
	Other Finances	-	41.67	-	500.00	(500.00)	500.00	500.00	0.00%
<b>Total</b>		<b>-</b>	<b>1,125.00</b>	<b>11,918.48</b>	<b>13,500.00</b>	<b>(1,581.52)</b>	<b>13,500.00</b>	<b>1,581.52</b>	<b>88.29%</b>
1816 Glacial Heritage	Revenue	-	-	-	-	-	-	-	#DIV/0!
	Expenditures	-	1,504.42	2,049.00	18,053.00	(16,004.00)	18,053.00	16,004.00	11.35%
	Other Finances	-	541.67	-	6,500.00	(6,500.00)	6,500.00	6,500.00	0.00%
<b>Total</b>		<b>-</b>	<b>2,046.08</b>	<b>2,049.00</b>	<b>24,553.00</b>	<b>(22,504.00)</b>	<b>24,553.00</b>	<b>22,504.00</b>	<b>8.35%</b>
1821 Snowmobile Trails	Revenue	-	(3,806.25)	(45,675.00)	(45,675.00)	-	(45,675.00)	-	100.00%
	Expenditures	1,137.25	3,806.25	45,675.00	45,675.00	-	45,675.00	-	100.00%
	Other Finances	-	-	-	-	-	-	-	#DIV/0!
<b>Total</b>		<b>1,137.25</b>	<b>-</b>	<b>-</b>	<b>-</b>	<b>-</b>	<b>-</b>	<b>-</b>	<b>#DIV/0!</b>
1824 Bike Trail	Revenue	(3,322.00)	(58.33)	(4,852.42)	(700.00)	(4,152.42)	(700.00)	4,152.42	693.20%
	Expenditures	2,400.00	58.33	3,669.05	700.00	2,969.05	700.00	(2,969.05)	524.15%
	Other Finances	-	82.67	-	992.00	(992.00)	992.00	992.00	0.00%
<b>Total</b>		<b>(922.00)</b>	<b>82.67</b>	<b>(1,183.37)</b>	<b>992.00</b>	<b>(2,175.37)</b>	<b>992.00</b>	<b>2,175.37</b>	<b>-119.29%</b>
1826 Dog Park	Revenue	(6,179.12)	(3,266.67)	(46,728.82)	(39,200.00)	(7,528.82)	(39,200.00)	7,528.82	119.21%
	Expenditures	1,125.26	4,603.83	18,901.48	55,246.00	(36,344.52)	55,246.00	36,344.52	34.21%
	Other Finances	-	(13.58)	-	(163.00)	163.00	(163.00)	(163.00)	0.00%
<b>Total</b>		<b>(5,053.86)</b>	<b>1,323.58</b>	<b>(27,827.34)</b>	<b>15,883.00</b>	<b>(43,710.34)</b>	<b>15,883.00</b>	<b>43,710.34</b>	<b>-175.20%</b>
1840 Groundskeeping	Revenue	(3,548.68)	(4,616.17)	(48,434.06)	(55,394.00)	6,959.94	(55,394.00)	(6,959.94)	87.44%
	Expenditures	3,722.43	6,866.17	69,400.87	82,394.00	(12,993.13)	82,394.00	12,993.13	84.23%
	Other Finances	-	-	-	-	-	-	-	#DIV/0!
<b>Total</b>		<b>173.75</b>	<b>2,250.00</b>	<b>20,966.81</b>	<b>27,000.00</b>	<b>(6,033.19)</b>	<b>27,000.00</b>	<b>6,033.19</b>	<b>77.65%</b>
Total All Business Units	Revenue	(40,323.05)	(19,450.42)	(260,191.60)	(233,405.00)	(26,786.60)	(233,405.00)	26,786.60	111.48%
	Expenditures	98,707.85	122,015.73	1,019,722.29	1,464,188.81	(444,466.52)	1,464,188.81	444,466.52	69.64%
	Other Finances	-	5,608.25	-	67,299.00	(67,299.00)	67,299.00	67,299.00	0.00%
<b>Grand Total Parks</b>		<b>58,384.80</b>	<b>108,173.57</b>	<b>759,530.69</b>	<b>1,298,082.81</b>	<b>(538,552.12)</b>	<b>1,298,082.81</b>	<b>538,552.12</b>	<b>58.51%</b>

**Jefferson County**  
**Final Non-Lapsing and Carryover of Fund Balances Request**  
**For the year ending December 31, 2014**

Department Name

*Parks Department*

Business Unit	Account #	\$ Amount	Reason
1801	594820	\$ 2,000.00	Korth Park (Fort Health Care) Playground Sign
1801		\$ 12,740.00	Handicap Fishing Warf
1801		\$ 30,000.00	Boat Launch; matched with \$25,000 donation to write stewardship grant for park improvements. Grant requires 50% match.
1801		\$ 5,300.00	Welcome Travelers & Pohlmann Playground(s)
1801	529299	\$ 2,096.00	Emerald Ash Borer Maintenance
1801	535245	\$ 7,815.00	Blacktop Maintenance
1806		\$ 81,519.99	Remaining Carol Liddle Estate funds, restricted by estate.
1809		\$ 3,531.78	Remaining Carlin Weld funds, restricted funds.
1812		\$ 89,249.87	Farmland rental revenue; restricted restoration reserve fund.
1812		\$ 30,332.28	Mason Log Home restoration funds/donations; restricted.
1812		\$ 2,288.00	Remaining Carnes Park Development funds.
1812		\$ 75,000.00	Carnes Park East - Parking Lot
1814		\$ 500.00	Waterloo Historical Society donation, restricted for signs.
1816		\$ 22,504.00	Remaining donations and state aid for Glacial Heritage Area, funds are restricted by source
1824	485200	\$ 2,175.37	Revenue from poster sales; balance bike donations.
1826		\$ 43,710.34	Remaining Dog Park funds.

**Total Requested: \$ 410,762.63**

Department Signature

Date