



Intercounty Coordinating Committee

Columbia, Dodge, Green Lake, Jefferson, Marquette & Sauk Counties

MEETING AGENDA & PROGRAM

(Updates in Process)

Officers:

Chairman

Russell Kottke
Dodge County
W8542 Laurel Hill Road
Fox Lake, WI 53933

Vice Chairman

Vern E. Gove
400 Dewitt Street
Portage, WI 53901

Secretary / Treasurer

Dodge County UW-Extension
127 E Oak Street
Juneau, WI 53039

Member Contacts:

Columbia County

Vern E. Gove
400 Dewitt Street
Portage, WI 53901

Dodge County

Russell Kottke
W8542 Laurel Hill Road
Fox Lake, WI 53933

Green Lake County

Harley Reabe
N5878 Lakeview Dr
Green Lake, WI 54941

Jefferson County

Jim Schroeder
715 E Reinel St., Apt 10
Jefferson, WI 53549

Marquette County

Bob Miller
N1305 18th Rd
Dalton, WI 53926

Sauk County

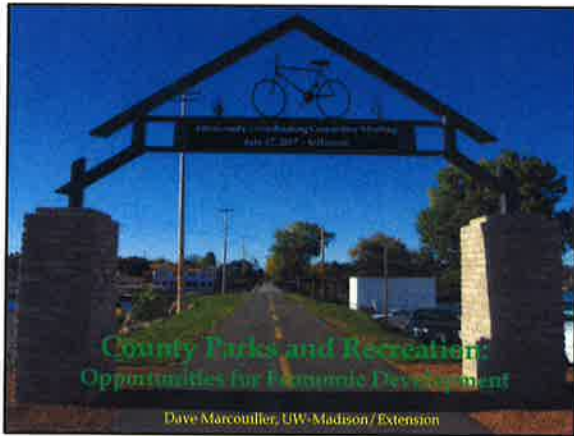
Marty Krueger
346 Warren Avenue
Reedsburg, WI 53959

Mailing Address:

UW-Extension
127 E Oak Street
Juneau, WI 53039

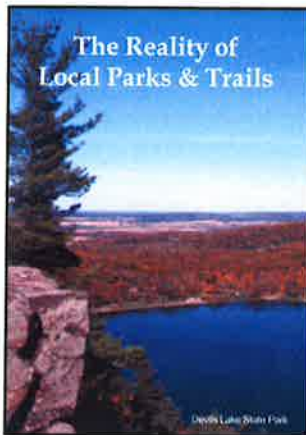
DATE:	August 21, 2017
TIME:	9:30AM
PLACE:	Sauk County Board Room (3 rd floor) West Square Admin Building 505 Broadway, Baraboo, WI 53913

9:00 AM	Gathering
9:30 AM	<p>Call to Order</p> <p>Pledge of Allegiance</p> <p>Certification of Open Meeting Notice</p> <p>Adoption of Agenda</p> <p>Approval of Previous Meeting Minutes</p> <p>Reports from Visiting Legislative Officials</p> <p>Update of County Issues – WCA</p> <p>Open Discussion of County Issues</p> <p>Program: Program: Making the Transition from County Administrative Coordinator to County Administrator: Reasons for the Change, Transition Processes, and Perceptions of Results</p> <p><i>Dan Hill, UWEX Local Government Center</i></p> <p><i>Jay Dampier, UWEX Area Director</i></p> <p>Open Discussion of County Issues</p> <p>Adjourn</p>

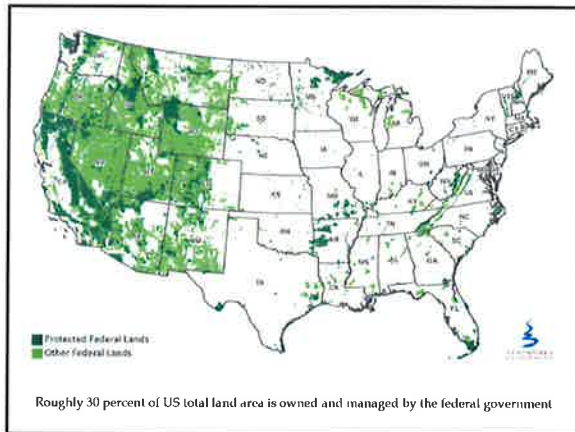


Parks & Trails Improve Local Quality-of-Life

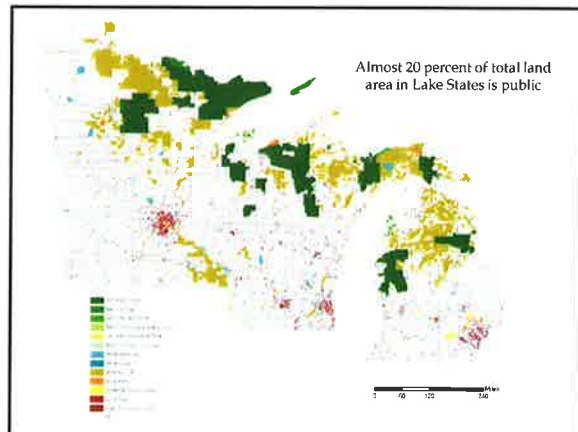
- Parks and trails provide access to natural amenities
- Research suggests that natural amenities are an important driver of in-migration
- New residents are often commuters with relatively higher incomes
- Also, new residents are often comprised of retirees and seasonal residents
- Public lands linked to gateway communities

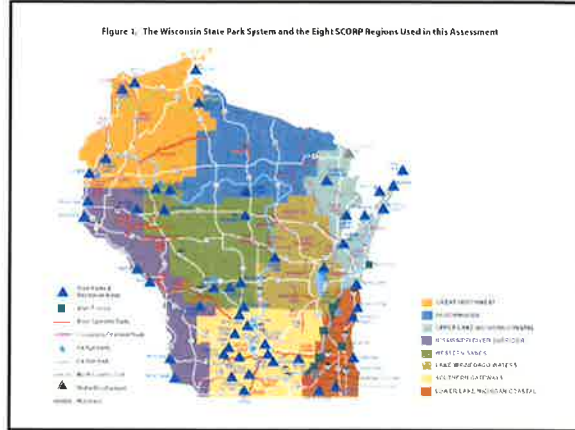
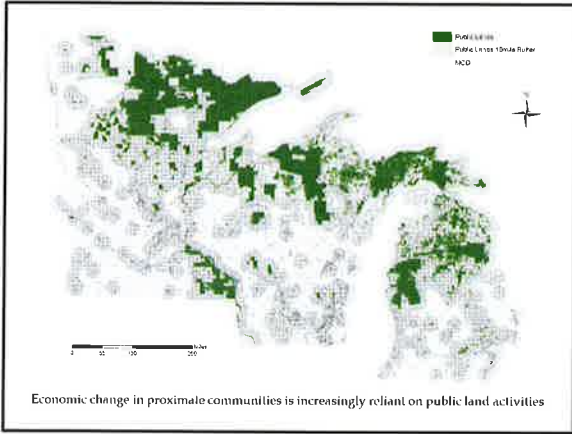


- Are not "costless"
- Significant expenditures of local governments for development and maintenance
- New parks & trails often require a transfer of individual rights for the greater public good
- Non-local users often perceived as "nuisance"
- So ... local decision-makers rightly ask "what's in it for us?"



- Benefits of Local Parks and Trails:**
- Enhance local quality of life and attract new residents
 - Stimulates local business economic
 - Leads to increases to nearby property values

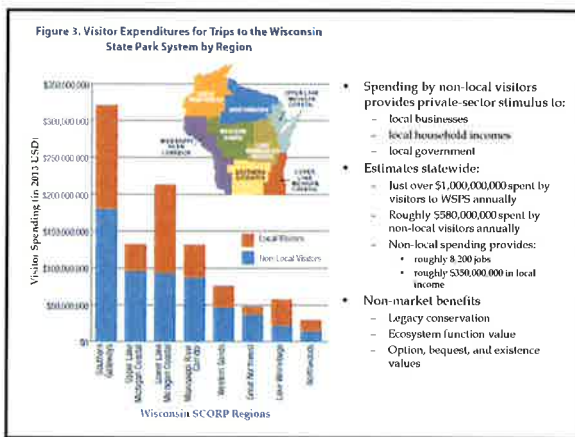




Public Parks as Local Assets

- Local parks are unique public goods
- Primary role in conserving natural, cultural, and historic resources
- Central to local quality-of-life and community pride
- Broad collective economic, social, and environmental benefits
- Visitation creates economic stimulus in gateway communities

High Call Scan Title



Impacts of Visitors

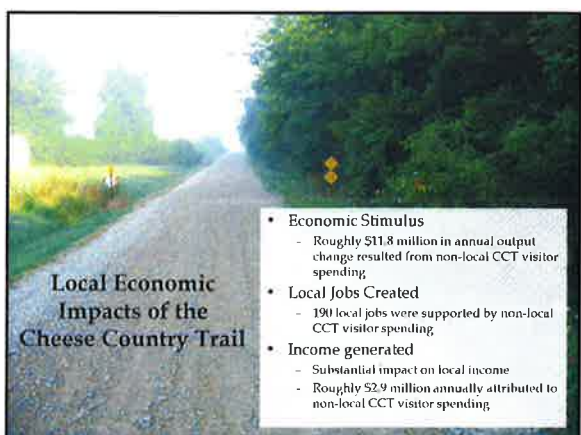
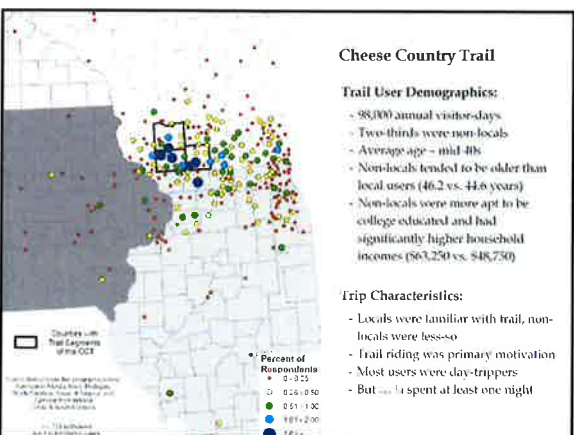
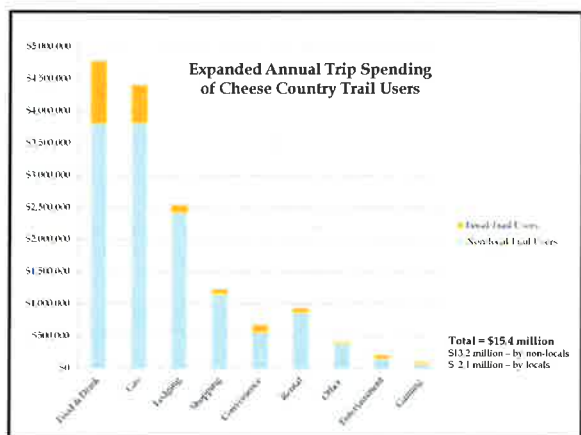
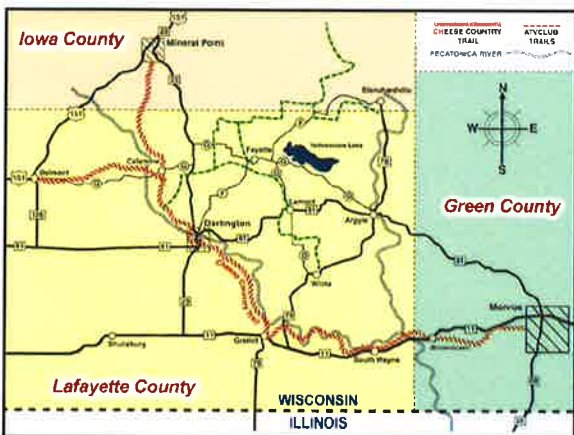
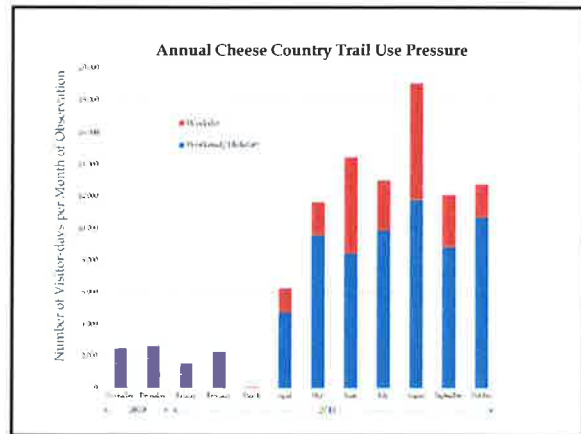
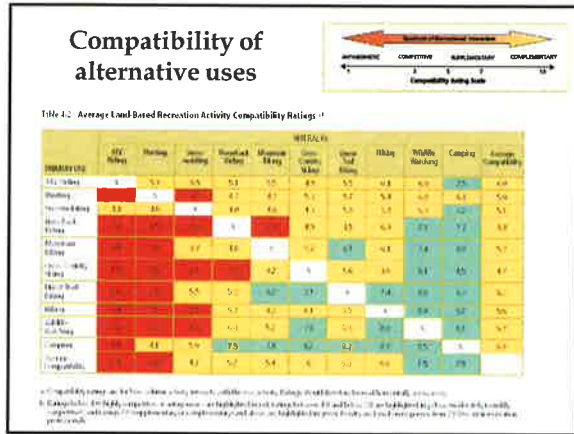
- Key to local impact is the non-local visitor
- Inflow of spending maintains and creates new opportunities for local business
- Inflow also contributes to local sales tax revenue

INITIAL IMPACTS OF MONEY
DIRECT IMPACTS OF SPENDING
SECONDARY IMPACTS OF SPENDING

Public Trails as Local Assets

- Local trails connect communities
- Provide broad opportunities for outdoor recreation
- Serve to showcase natural, cultural, and historic resources
- Stimulate local business receipts

High Call Scan Title



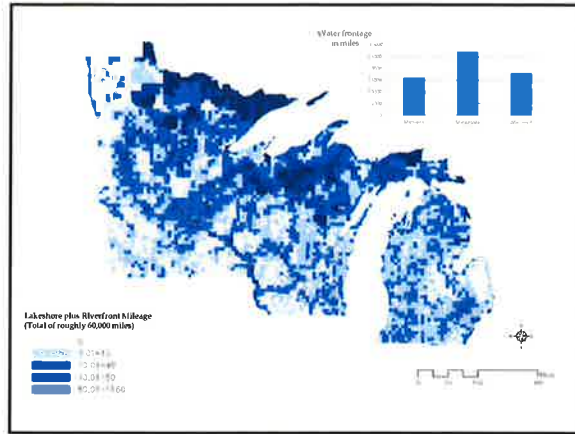
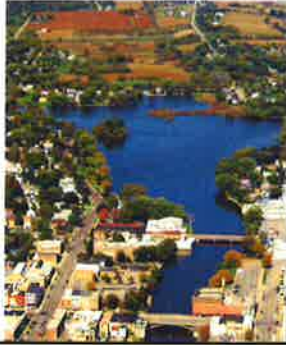
Parks Enhance Nearby Property Values

- Recognized early on as a key justification for parks and recreation spending ...

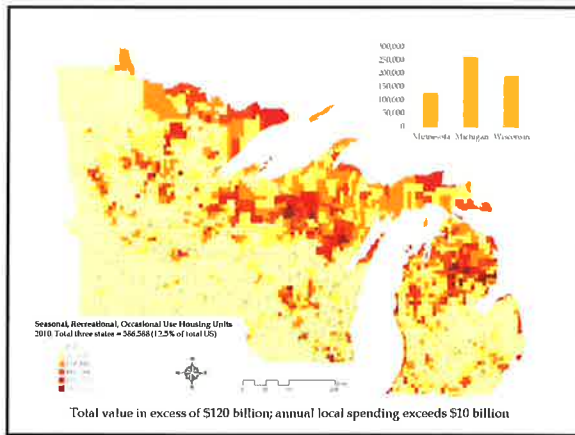
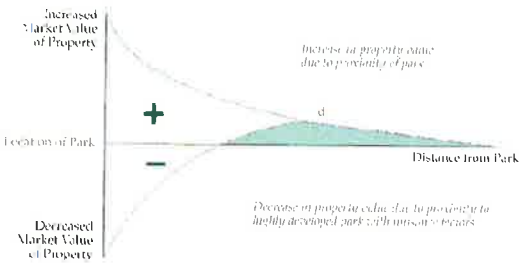
"...the increase in taxes by reason of the enhancement of values attributable to the park would afford more than sufficient means for the interest incurred for its purchase and improvement without any increase in the general rate of taxation."

A. B. Barnes, City Comptroller in 1856 on the creation of NYC Central Park

- Value of parks and trails are "capitalized" into the value of surrounding real estate

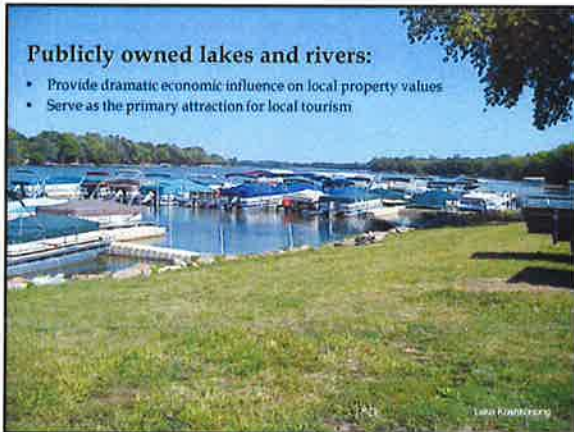


Land Value and Distance from Park



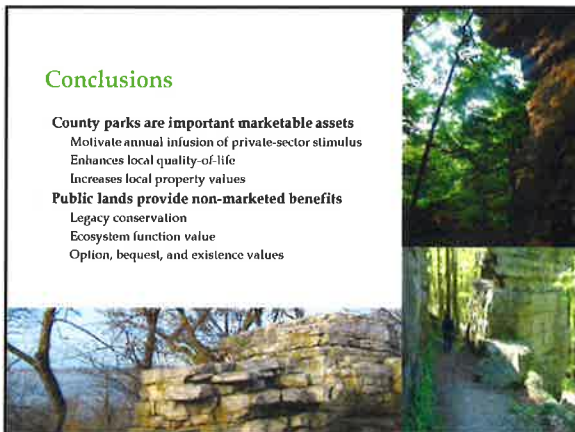
Publicly owned lakes and rivers:

- Provide dramatic economic influence on local property values
- Serve as the primary attraction for local tourism



Conclusions

- County parks are important marketable assets**
 - Motivate annual infusion of private-sector stimulus
 - Enhances local quality-of-life
 - Increases local property values
- Public lands provide non-marketed benefits**
 - Legacy conservation
 - Ecosystem function value
 - Option, bequest, and existence values





Intercounty Coordinating Committee Meeting Minutes

Monday, July 17, 2017

Jefferson County UW-Extension Building, 864 Collins Rd., Jefferson, Wisconsin

ICC Participants

Columbia County – Mary Cupery; Nancy Elsing; James Foley; Vern Gove; Kathleen Haas; Andy Ross; **Dodge County** – David Frohling; Russell Kottke; Jim Schaefer; Dan Schultz; **Green Lake County** – Harley Reabe; Cathy Schmit; ; **Jefferson County** – Joe Nehmer; Amy Rinard; **Marquette County** - Pat Kilby; Bob Miller; Keri Solis; Gary Sorenson; Mary Walters; **Sauk County** – Jennifer Erikson; Marty Krueger; **WCA** – Kyle Christenson; **State Legislators** – none; **Guest** – Dave Marcouiller; **UWEX AED** – Jay Dampier; Jeff Hoffman

Call to Order

The meeting was called to order by ICC Chair Russell Kottke at 9:30 a.m.

Certification of Wisconsin Open Meetings Law Notice

The Secretary confirmed the requirements of the *WI Open Meetings Law* were met.

Adoption of Agenda

Motion by Marquette County, second by Green Lake, to approve the agenda – Approved.

Approval of Previous Meeting Minutes

Motion by Columbia County, second by Dodge County, to approve the minutes of the June 2017 meeting of the Intercounty Coordinating Committee -- Approved.

Reports from Visiting Legislators -- none

WCA Legislative Report – Kyle Christenson

- Assurity Bonds legislation has passed that allows counties to borrowed. If local unit of government (LUG) chooses not to float an assurity bond then LUG must pass an ordinance.
- Competitive bidding bill would allow county with projects costing over \$25 K to go thru the competitively bidding process, three bids, the new legislation allow LUG to allow project under to \$75K to bid directly.
- Dark Store Legislation: LUG are encountering new big box store (e.g., Walmart, Walgreens, etc.) to seek lower property taxes for new stores, using market data from area closed down near-by stores as basis for lower property taxes, sometimes up to half the assessed value of the new development/store. 150 people testified in support of the bill at hearing. The “dark store” bill is expected to pass in assembly, there may be challenges on Senate side.
- Next month’s WCA monthly magazine will feature the “dark store” issue.
- Joint Agency Statute: commission of government reform and efficiency – currently, state statute has not permitted units of government to work together. This bill allows for collaboration between units of government as long as a state agency is involved.

- State Budget: is a problematic, without having a state budget passed, the state is putting things on credit. GPR borrowing has been increased from \$500 million to \$850 million. Legislature still wants to see the transportation budget increased and identify an associated revenue source. Legislature and Executive branch are at a standstill. As of 7/1 the state is not allowed to bond future transportation projects.
- Governor is proposing reducing the lowest two income tax brackets at a cost to state of \$2 million. Senate opposes and is waiting to negotiate before passage of the state budget.

Open Discussion of County Issues

- Audit of WI DoT -- WI Dot was not accounting for inflation as it relates to multi-year projects. This will lead to requiring additional revenue sources dedicated to the transportation budget.
- ICC Chair asked member about how group should proceed given the restructuring of UW-Extension/nEXT Gen. An 8/2 @ 8:30 in Columbia County meeting has been scheduled with ICC county board chairs. Items for consideration include, how nEXT Generation will affect how ICC program coordination and the transfer administrative responsibilities.
- ICC program ideas shall be considered for 2017-2018 Program as part of the August ICC agenda, 8/21, in Sauk County, Program Topic: *Pro's & Con's of County Strategic and Leadership Models.*

Program – County Parks and Recreation: Opportunities for Economic Development Department (refer to powerpoint presentation)

Professor Dave Marcouiller, UW-Madison Department of Urban and Regional Planning

Email: dave.marcouiller@wisc.edu

Phone: (608) 262-2998

Office: 101 Music Hall

ICC County Parks Directors or Coordinators (invited)

- **Columbia County:** city of Rio has a location on a bike trail that provides bike tools for public use.
- **Dan Schultz/Dodge Co**
- **Pat Kilby/Marquette Co.:** Currently the Co. LWD is partnering with the Co. Health Dept. to improve the county's health rankings; Marquette Co. also realizes the importance and contribution of how trails attract younger generations to area. Marquette county has appointed a county sub-committee that addresses parks and recreation opportunities and have included citizen advisors; Marquette co. has learned that the bike web page is the county's seconded most visited page; 98% of people that are shore fishing are from out-of-county; City of Packwaukee is looking to add a city park that accommodates shore fishing; also have found that the barn quilt trail is used by bicyclists and contributes to improving tourism in the county.
- **Joe Nehmer/Jefferson Co.:** City of Watertown received a \$100K grant to promote health and wellness using bike trails; P & R jobs in rural areas allows the recruitment and hiring of younger generations; Jefferson Co. recently received a \$1.1 million gift to maintain and operate land donation as future park site; Trails have been expanded and being connected thru out State; Over time, the perspective of providing bike trails has changed from negative to being an asset for local units of government; the county has held public feedback sessions examining the use of trails by motorized users/ATV users. This was done when Jefferson co. bought 172 acres of state land from WI DNR. Jefferson Co. agreed to operate the motorized trail for 5 years. After 5 years Jefferson co. held a public meetings to determine if 172 acres should remain ATV trail or become passive trail. Because of major opposition, Jefferson county has converted trail to passive trail.

- **Sauk County:** State purchased 2013 railroad line in Sauk co., Sauk co has converted rail to 3-segment trail; UWEX facilitated a public process to advise county on future use,; The Sauk county (e.g., *connecting pearls as part of a neckless*) trail will:
 - connect with Dane County's trail system;
 - Will build a recreation bridge over WI river,
 - Connect to converted Badgerland property
 - Connect to Devil's Lake State Park, and ,
 - Connect to Ice Age Trail and Elroy Sparta trail.

Open Discussion of County Issues -- none

Adjourn

Next Meeting

Next meeting: August 14, 2017 in Sauk Co. – Topic: Pro's & Con's of County Strategic and Leadership Models

Adjournment

Meeting adjourned after tour

Respectfully Submitted,

Kathleen Haas
UW-Extension, Columbia County



ICC Sign-in Sheet
July 17, 2017 ☆ Jefferson, WI

Name	Affiliation
Kathleen Hoas	Columbia Co. UWEX
Dan Schultz	Dodge County Parks + Trails
Bob Miller	Co. Board, Marquette Co
Mary Wastene	Co Bd - Manassee Co Vc
Jeff Hoffman	UWEX
DAVE MARCOVILLER	UWEX
PAT KILBEE	MARQUETTE COUNTY LVED
Gary Sorensen	Marquette Co. Admin. Coord.
Joe Nehmer	Jefferson County Parks
Harley Reabe	Green Lake City Chair
Jay Dampier	UW - Extension
CATHY SCHMIT	GREEN LAKE Co. Admin.
NANCY ELSING	Columbia County EDC
Mary Cupery	Columbia County Istvice chair
Andy Ross	Columbia County Supervisor



ICC Sign-in Sheet
July 17, 2017 in Jefferson, WI

8/2 @ 8am
CoCo - ICC @
NEXT GEN

Name	Affiliation
James E Fole	Columbia Co.
VERN GOVE	Col. Co. CHAIR
Jim SCHAERER	CITY OF HORICON
Keri Solis	UWEX Marquette
Dave Frohling	Dodge Co.
Amy Rinar d	Jefferson Co.
Jim Erickson	Sauk UWEX
MARTY KRUEGER	SAUK Co. BOARD CHAIR
Russell Kothe	Dodge County Chair
Ryle Christenson	WLA