

Parks Committee Agenda
Jefferson County
Jefferson County Courthouse
311 S. Center Avenue, Room 202
Jefferson, WI 53549

Date: Monday, February 5, 2018

Time: 9:30 a.m.

Committee members:	Foelker, Matt	Payne, Laura
	Kelly, Mike	Tietz, Augie
	Nass, Steve	

1. Call to order
2. Roll call (establish a quorum)
3. Certification of compliance with the Open Meetings Law
4. Approval of the agenda
5. Approval of Park Committee Minutes for December 4, 2017
6. Communications
7. Public comment (Members of the public who wish to address the Committee on specific agenda items must register their request at this time)
8. Discussion and Possible Action on Wisconsin Department of Transportation TAP Grant
9. Discussion and Possible Action on 2018-2019 Outdoor Recreation Aids Grant
10. Discussion and Possible Action on Former County Highway Site
11. Discussion and Possible Action on Garman Nature Preserve Vegetation Management Plan and Garman Nature Preserve Sign Plan
12. Discussion and Possible Action on New Position Request
13. Discussion and Possible Action on Requests for Reserving Park Open Spaces
14. Discussion on County Conservation Aids Award Notification – Carlin Weld Park
15. Discussion on Interurban Recreation Trail
16. Discussion on Historic Sites Preservation Council
17. Discussion on Glacial Heritage Area (GHA) –Friends of GHA
18. Discussion on 2018 Parks Department Budget
19. Convene in closed session pursuant to section 19.85 (1)(e) Wis. Stats. for deliberating or negotiating the purchase of public properties, the investing of public funds, or conducting other specified public business, whenever competitive or bargaining reasons require a closed session, for the purpose of discussion on the proposed use of the former Jefferson County Highway Shop site and possible acquisition of additional land adjoining county owned land
20. Reconvene in open session for discussion and possible action on closed session items
21. Adjourn

Next scheduled meetings:

March 5, 2018
April 2, 2018
May 7, 2018
June 4, 2018

A Quorum of any Jefferson County Committee, Board, Commission or other body, including the Jefferson County Board of Supervisors, may be present at this meeting.

Individuals requiring special accommodations for attendance at this meeting should contact the County Administrator 24 hours prior to the meeting at 920-674-7101 so appropriate arrangements can be made.

Parks Committee Minutes
Jefferson County
Jefferson County Courthouse
311 S. Center Avenue, Room 202
Jefferson, WI 53549

#5

Date: Monday, December 4, 2017

Time: 9:00 a.m.

Committee members: Foelker, Matt
Kelly, Mike
Nass, Steve
Payne, Laura
Tietz, Augie

1. **Call to order**
Kelly called the meeting to order at 9:02am
2. **Roll call (establish a quorum)**
Present: Foelker, Kelly (out at 9:25am), Payne, Nass
Absent: Tietz
3. **Certification of compliance with the Open Meetings Law**
Meeting was posted and noticed according to law
4. **Approval of the agenda**
Nass/Foelker 4/0
5. **Approval of Park Committee Minutes for November 6, 2017**
Nass/Foelker motion to approve the minutes of November 6, 2017. Motion passes 4/0.
6. **Communications**
Communications were included in the packet.
7. **Public comment** (Members of the public who wish to address the Committee on specific agenda items must register their request at this time)
No public Comment
8. **Discussion and Possible Action on Placement of Bees in County Parks**
Nehmer – Contract, third paragraph, possible fee. Worked with Jorgensen at UW-Extension. Fee \$10/per hive/per year not to exceed \$30/year may be waived if additional services are provided to the county.
Kelly – could we add other areas that may be deemed suitable as approved by the committee
Nass – fee may be waived by director, inform committee.
Nimm – map would be attached identifying hive location(s).
Nass/Foelker motion to add “other designated areas”, change typo. Motion passes 4/0.
9. **Discussion on Interurban Recreation Trail**
Nehmer – will visit on today’s tour. Unresolved bridge width, estimate 10ft wide bridge, DNR/WeEnergies referring to bicycle manual/DOT ASHTO – probably will need a 12ft clear span bridge (10ft path, one foot clear on sides, 12ft bridge, 42-50” height, load will have to accommodate ambulance (14,000-15,000 # load)
Kelly – there is good vehicle access on both sides of the river, do we need to accommodate emergency vehicles?
10. **Discussion on Glacial Heritage Area (GHA) –Friends of GHA**
No report today
11. **Discussion on 2018 Youth Hunt at Dorothy Carnes Park**
Nehmer noted there were two hunters, with no deer kill.
12. **Review of Financial Statements (October, 2017) and Department Update – Parks Department**
Nehmer - 2017 looks good @ 74.69% of total budget.

13. **Discussion on 2018 Parks Department Budget**

Nehmer – no supervisory amendments, budget approved.

Respectfully Submitted,

Mary S Nimm, Program Assistant Parks

14. **Depart for Park Tour @ approximately 9:20am**

Group departed at 9:25am

a. **Dog Park**

Nehmer – 1,838 annual tags were sold in 2017. That is not counting daily. Many people really enjoy the dog park and make it part of their daily routine. Area 1 is the most popular and most used area.

b. **Rock River Park**

Payne – Do people pay to launch their boats?

Nehmer- Other municipalities do charge, at this time – we do not.

c. **Korth Park**

Nehmer- With big events and cross country meets, parking has become an issue.

Udovich -We've talked about putting in a gravel shoulder and parallel parking.

Nehmer- We are hoping to have the road and extra parking done by the 1st of June.

d. **Garman Nature Preserve**

Nehmer- We recently received a significant donation for improvements. We recently completed a vegetation and signage plan.

Nehmer- Between now and summer 2019 we will have \$93,000 available to spend at Garman.

e. **Cappies Landing**

Klement- We are working to get about 6 more dead trees cut down in here.

Klement- These are the newer camp sites. Each has a fire pit, hook for food and a picnic table. The flowing well and restrooms were installed early summer last year.

f. **Interurban Trail**

Tietz - A bathroom/shelter facility will be constructed in the near future. The Parking lot will get paved along with some extra features. The trail has been heavily used and we have had very positive feedback.

15. **Adjourn**

Meeting Adjourned at 2:11pm

Respectfully Submitted,

Kaela Hutter, Administrative Assistant Parks

Dean Jefferson County Parks Dept:

#6

Please accept this \$50.00 donation
in honor of my beautiful Great
Pyrenees, Haku (Feb. 2008 - Jun 2017), my
best + most faithful companion. He made
me his job (having no sheep) and
asked only for love, respect, and weekly
trips to your amazing Dog Park.

Thank you so much for so many happy
memories! — Suzanne Peters hakuismom@gmail.com

RESOLUTION NO. 2017-___**Authorizing recreational trail grant application and acceptance**Executive Summary

The Jefferson County Parks Department is planning to construct a recreation trail for hiking, biking and cross-country skiing on right-of-way owned by We Energies. The proposed trail is 10.96 miles in length and is located between the City of Watertown, Wisconsin, and the City of Oconomowoc, Wisconsin. This off-road paved trail connection will be built on the former Interurban Rail Line that connects the City of Watertown to the City of Oconomowoc. The path cross-section will consist of a 10-foot wide asphalt surface with 2-foot wide aggregate shoulders. An 8-inch stone base with 3-inch asphalt layer will be used. The project is located primarily in Jefferson County (10 miles) and a portion in Waukesha County (1 mile). The City of Watertown and the City of Oconomowoc are the project boundaries. The old interurban rail line, which at one time connected the City of Watertown with the City of Milwaukee, is now a utility corridor owned by We Energies. American Transmission Company (ATC) operates the electric transmission facilities on the corridor. The Parks Committee considered this resolution at its meeting on February 5, 2018, and recommends forwarding to the County Board for approval.

WHEREAS, the Executive Summary is incorporated into this resolution, and

WHEREAS, the Parks Committee has expended significant time and effort towards establishing a multi-use trail from Watertown to Oconomowoc, and

WHEREAS, the cost of such projects from River Road in the Town of Watertown east to County Highway F in the Town of Ixonia is approximately \$1.73M due to the amount of paving required, and

WHEREAS, the Parks Committee recommends seeking grant funds from the Wisconsin Department of Transportation, Transportation Alternatives Program, (TAP) to fund 80% of project construction, which would not begin before 2019, and

WHEREAS, the Parks Committee recommends completion of these multi-purpose trails as part of the County's Bikeway/Pedestrianway Plan, the Jefferson County Comprehensive Plan and the Glacial Heritage Area Plan, and

WHEREAS, the grant applications need to be accompanied by a resolution supporting the project.

NOW, THEREFORE, BE IT RESOLVED that the Parks Department is authorized to seek funding from the Wisconsin Department of Transportation, Transportation Alternatives Program, (TAP) for this multi-use recreational trail from Watertown to Oconomowoc, and if grants are awarded in sufficient amounts to help pay the cost of such construction, the County Administrator is

authorized to accept said grants, sign the grant contracts and perform all other duties necessary to comply with and fulfill the grant provisions.

Fiscal Note: The Wisconsin Department of Transportation, Transportation Alternatives Program (TAP) grant program funds 80% of the cost of construction estimated at \$1,102,839.98. The County is responsible for 20% of the cost of construction estimated at \$275,710. The County is also responsible for the design and state review costs estimated at \$206,782.50. Thereafter, Jefferson County would be responsible for maintenance which is estimated at \$600 - \$900 per mile per year over the approximately 10.96 miles of trail that would be added. The County will continue to promote Adopt-A-Trail relationships to lessen the cost of maintenance.

Ayes_____ Noes_____ Abstain_____ Absent_____ Vacant_____

Requested by
Parks Committee

02-13-18

Mary Nimm: 01-30-18; J. Blair Ward: 01-31-18, 02-01-18; J. Blair Ward, Mary Nimm & Joe Nehmer: 02-02-18

REVIEWED: Administrator____; Corp. Counsel ____; Finance Director ____

Authorize application for Outdoor Recreation Aids GrantExecutive Summary

Jefferson County participates in the WI DNR Snowmobile Trail Maintenance Program. Jefferson County maintains approximately 190.7 miles of public snowmobile trail. The WI DNR requires the Outdoor Recreation Aids Grant resolution be renewed each calendar year. The Parks Committee considered this resolution at its February 5, 2018, meeting and recommended forwarding to the County Board for approval.

WHEREAS, the Executive Summary is hereby incorporated by reference into this resolution, and

WHEREAS, Jefferson County is interested in developing lands for public outdoor recreation purposes as described in the application, and

WHEREAS, financial aid is required to carry out the annual snowmobile trail maintenance project, and

WHEREAS, Jefferson County includes expenses and offsetting revenue in the adopted budget each year for this program,

NOW, THEREFORE, BE IT RESOLVED that the Board authorizes Joseph W. Nehmer, Jefferson County Parks Department Director, to act on behalf of Jefferson County to:

- submit an application to the State of Wisconsin Department of Natural Resources for any financial aid that may be available for the snowmobile trail maintenance project;
- submit reimbursement claims along with necessary supporting documentation within 6 months of project completion date;
- submit signed documents; and
- take necessary action to undertake, direct and complete the approved project.

BE IT FURTHER RESOLVED that Jefferson County will comply with state or federal rules for the programs to be open to the general public during reasonable hours consistent with the type of facility and will obtain from the State of Wisconsin Department of Natural Resources approval in writing before any change is made in the use of the project sites.

Fiscal Note: The snowmobile trail maintenance program is expected to cost between \$45,675 and \$47,925 for winter 2018-2019. One hundred percent (100%) of this cost is funded by the grant.

Ayes_____ Noes_____ Abstain_____ Absent_____ Vacant_____

Requested by
Parks Committee

Joe Nehmer:

REVIEWED:

Date: Thursday, December 14, 2017

Time: 2:00 p.m.

1. In attendance:

Kevin Wiesmann, Jefferson County Parks

Joe Nehmer, Jefferson County Parks

Mary Nimm, Jefferson County Parks

Carl Korfmacher, Midwest Prairies

Gabe Haberkorn, Waterloo Parks

Dick Jones

Joni Crave

Thomas Hoesly, Neighbor

Nancy Hoesly, Neighbor

Howard Kulke, Neighbor

2. Wiesmann introduced the management plan for the preserve and asked for input from those in attendance.
3. T. Hoesly expressed a concern about reducing the canopy cover, noting that he was speaking for those who enjoy the preserve when he states that the public does not want to see the preserve changed to a prairie or oak savanna. The public likes the tree cover and the feeling of being in a wooded area.
4. H. Kulke noted that park users often walk onto his property thinking they are still in the preserve. Kulke would like the trails built in a way that keeps the public off his property.
5. Wiesmann and Korfmacher noted that the plan will be implemented in stages starting with areas 1 & 6 and would take several years to complete. In Area 6 (between the trails and near the mounds) the canopy opened some to allow more sunlight, however the neighboring sections will not be as open and will provide screening for the neighbors to the east and west.
6. Crave noted that everyone in the room loves the preserve and has a vested interest in the project and much care and thought was put into the management plan.
7. Per Phone Call with Joe Nehmer: Caller named G. Skalitzky – concerned about over harvesting the trees. Mr. Skalitzky stated that the Garman family did not approve of tree removal from the Preserve and he stressed the importance of careful and cautious tree removal.

Garman Nature Preserve

Management Plan
December 2017

Prepared for:
Jefferson County Wisconsin
Parks Department

Prepared By:
Carl Korfmacher
Midwest Prairies, LLC

Introduction:

Garman Nature Preserve is an open space parcel of about 45 acres south and west of Waterloo, Wisconsin. It is located on a large drumlin that rises more than 100 feet above the surrounding countryside. In pre-settlement times, most drumlins were primarily dry prairie. Native Americans typically burned hilltops frequently in an effort to keep an open view to the surrounding countryside. Likely, there would have been oak savanna plant communities along the periphery of the hilltops and possibly on top as well.

Since they are primarily composed of sand and gravel and have steep slopes, they do not make for good farm land. The 1937 aerial photo shows the wooded area in and around Garman Nature Preserve to be very similar in shape to today's forested areas. However, it is obvious that the tree canopy covered approximately 75% of the surface. Today's canopy cover is 100% except where the mounds exist.

The goal of this management plan is not to restore the natural systems to a pre-settlement condition. Rather, we are working to enhance the ecological health of the site by working with the remnant native plant communities that exist. In the area nearer the mounds (units 5 and 6) we will move the system more toward an open woods or savanna to better historically represent the conditions that likely existed when the mounds were built. We will also look to open up views by selectively removing trees where it makes sense. Another goal of the plan is to maximize the diversity of native plant communities that both currently exist and would have historically existed in the area.

The site is infested with invasive woody plants to a greater or lesser degree depending on the specific unit in question. The most common invasive species include buckthorn (common and glossy), honeysuckle, and burning bush. Garlic mustard is also found in many places but is not overly abundant. Along with non-native invasives some of the native trees are functionally invasive including elm and cherry in places as well as box elder and perhaps aspen.

A fundamental premise of this plan is that our goal is to get the property on a trajectory where major intervention is no longer needed. At that point, periodic maintenance with fire and occasional removal of invasives will be all that is necessary to keep the woods in a healthy ecological condition in perpetuity. We will focus on certain units, concentrating efforts for each unit in their turn in order to get them "over the hump," meaning that they reach the desired condition requiring minimal intervention. See "Priorities" at the end of the plan.

A primary premise of this plan is not to restore the entire preserve to a native savanna or purely oak forest, but rather focus on controlling invasive plants and promoting the health of the preserve as a whole. The tree cover in the preserve has been noted not only by current preserve users, but by the Garman's themselves as a highlight of the preserve's charm and peaceful quality. As such, this plan will ensure the dominant ecosystem throughout the preserve is a native hardwood forest with some interspersed oak openings and one area of oak savanna.

The management plan will break down the site into management units, characterize them, set goals and offer a prescription for reaching those goals. A map and 5 year schedule accompany the plan. In all units, prescribed burning and periodic herbicide applications to encroaching invasives will be necessary in perpetuity.

Unit 1 – 7.2 acres

This unit surrounds the parking entry and other more intensive use site features. It is mostly flat and includes a wetland in the northwest corner. There are several areas of pine plantation and aspen groves and a robust colony of glossy buckthorn. Glossy buckthorn generally prefers moist soils so is probably not a substantial threat to the rest of the property but should be controlled aggressively. A proposed Nature Trail will bisect this area of the preserve. Highlighting a diverse plant community dominated by Native Wisconsin Plants will be a high priority in this area.

Goals: Create wetland or wet woods habitat where supported by hydrology. Develop access to wetland as appropriate.

Prescription:

- Eliminate glossy buckthorn and honeysuckle
- Thin pines as necessary to ensure long term viability and reduce the total footprint of the pine stand.
- Where pines are currently unhealthy, remove and leave open.
- Plant native grasses and forbs in open areas for maximum effect along the nature trail path
- Re-introduce savanna or woodland ground covers as appropriate
- Actively plant native trees and shrubs where appropriate.

Unit 2 – 2.9 acres

This unit includes some of the steepest slopes on the site. There are scattered aspen groves and a few mature oaks. Invasives are prevalent in areas. This area will be seen by nearly all visitors as it connects directly to the parking area and trailhead.

Goals: Develop a diverse native woodland plant community. Take care to minimize erosion on steep slopes.

Prescription:

- Eliminate invasives – most work done by hand due to steep slopes and potential for erosion.
- Thin trees to allow more light to penetrate. Complete thinning over several years to minimize visual impact to users.

Unit 3 – 3.4 acres

This unit includes steep east facing slopes and two ranks of coniferous trees: one along the property line and another running north and south that is about 50 feet in from the property line. The pines along the property line appear to be off the property on the neighboring parcel as does much of the trail that runs next to them. There is a scattering of medium age black oak throughout this area interspersed with aspen groves.

Goals: Stabilize existing plant communities with minimal effort.

Prescription:

- Thin black oaks where they are too dense.
- Eliminate invasives
- Plant native grasses and sedges where soil is bare

Unit 4 – 3.2 acres

This unit is similar to unit 3 and is characterized by steep slopes to the east. The coniferous trees identified in unit 3 do not exist in unit 4. The unit runs parallel to the Indian mounds in unit 5. Invasives are present but not dominant. Numerous black and red oaks are found.

Goals: Open up views from the mounds above to the east by selectively removing trees. Encourage native plant community.

Prescription:

- Identify areas for clearing/viewshed
- Remove trees identified
- Thin additional trees to allow more light where necessary
- Eliminate invasives
- Plant native grasses and sedges where soil is bare

Unit 5 – 3.8 ac

This unit is much more open than the rest of the site and includes the Indian mounds. Scattered mature oak and many smaller hickory are found with little in the way of underbrush. Giant yellow hyssop is found particularly around the mounds but in other places in this unit as well.

Goal: Protect and enhance the integrity and historic context of mounds while providing visual access.

Prescription:

- Thin small hickory to encourage health of remaining trees
- Hand broadcast native grasses in mound area in order to encourage transition away from non-native cool season grasses that currently exist.
- Coordinate tree removal for visual access planned for Unit 4
- Consider planting a small number of bur oaks in strategic locations

Unit 6 – 4.6 acres

This unit is mostly flat or gently sloping and somewhat open in places. It has many dead and dying red oaks and some white oaks that have succumbed to oak wilt. Hickory is also found in abundance as well as some basswood especially further to the west. There are many smaller cherry and some boxelder and elm. The understory is mostly invasive species but a few native shrubs including cranberry bush viburnum.

Goal: Transition toward savanna habitat

Prescription:

- Remove many woodland trees including most or all aspen, basswood, walnut, red oak, ash, elm, cherry, and box elder.
- Thin hickory where dominant
- Protect existing white and bur oak

- Eliminate invasives
- Clean up major areas of downed wood, leaving some for habitat
- Plant native grasses and sedges
- Manage weeds for several years before introducing native forbs
- Plant bur oak in large openings leaving sufficient room for them to develop broad canopy

Unit 7 – 3.5 acres

This unit includes moderate terrain to the west which transitions to a flat area near the western property line. It is a mesic woodland plant community with many native ground covers and trees such as basswood, walnut and red oak as well as bur and white oak. Giant yellow hyssop is also found. Other high quality species such as showy orchid are known to grow in this area along with native shrubs such as American cranberry bush and elderberry. Substantial areas of burning bush are found particularly to the north. Other invasives are also found in places.

Goals: Encourage health of mesic woods plant community, maximize biodiversity of native plants

Prescription:

- Eliminate invasives taking care not to harm existing native ground covers and shrubs
- Thin trees where shade is particularly dense
- If necessary, seed bare areas with native grasses and sedges after elimination of invasives

Unit 8 – 8.1 acres

This unit includes consistently steep slopes to the west and north. Trees primarily include some oaks, maples, basswood, hickory and walnut. It has a significant infestation of burning bush, but shows signs of healthy ground covers if the invasives are removed. This area was recently logged as well. A trail addition is proposed for this unit.

Goals: Encourage health of mesic woods plant community

Prescription:

- Eliminate invasives taking care not to harm existing native ground covers and shrubs
- Thin trees where shade is particularly dense
- Locate and clear area for new trail
- If necessary, seed bare areas with native grasses and sedges after elimination of invasives

Unit 9 – 6.7 acres

This unit includes the highest elevations on the property with slopes to the west, north and east. There are a handful of savanna-form white oak particularly on the western slopes. Red, bur and black oak are also present include a few medium age individuals. Because of the diversity of slope and grade conditions, nearly every species of tree present on the site are likely to be found in this unit, particularly basswood, sugar maple, walnut, boxelder, elm, green ash, and cherry. Native shrubs such as cranberry bush viburnum and pagoda dogwood are also present. A number of large trees have recently died, some of which have fallen. An existing trail that delineates the western boundary of this unit is to be

abandoned after the new trail through unit 8 is built. However, it may be useful to keep the trail corridor open to provide a firebreak.

Goal: Create open woods/savanna conditions on much of the site. Open up views from high point and create a seating area.

Prescription:

- Eliminate invasives taking care not to harm existing native ground covers and shrubs
- In selected areas, continue the savanna ecosystem created in Unit 6 transitioning to mesic woods where sensible. In savanna areas:
 - Remove many woodland trees including most or all aspen, basswood, walnut, red oak, ash, elm, cherry, and box elder.
 - Thin hickory where dominant
 - Protect existing white and bur oak
 - Clean up major areas of downed wood, leaving some for habitat
 - Plant bur oak in large openings leaving sufficient room for them to develop broad canopy
- In mesic woodland areas thin trees as necessary
- Block access to existing trail after completion of new one by creating two formal gates that will allow continued, but limited access.
- If necessary, seed bare areas with native grasses and sedges after elimination of invasives

Priorities:

1. Begin savanna restoration activities in Unit 6
2. Eliminate glossy buckthorn in unit 1
3. Begin modest thinning and invasive removal in unit 2 – because this is such a high profile area, we recommend doing modest amounts of work each year for several years to minimize visual impact.
4. Invasive removal and trail construction in unit 8
5. Open up visual access in unit 4
6. Begin work on Unit 9
7. Remaining areas lower priority

Dr. J.S. Garman Nature Preserve Signage Plan

July 21, 2017

General Signage Guidelines

- Place signs at each intersection where park users need to make a decision.
- Focus directional signs on landmarks and destinations.
 - Native American Mounds
 - Nature Trail
 - Garman Parking Lot
 - Waterloo Regional Trailhead Facility
 - Future Destinations may include:
 - Point of Highest Elevation
 - Overlooks and Scenic Views
- Utilize consistent materials, design, and placement to make signage easy to understand by users.
- Sample signs and kiosks are examples for discussion purposes.

List of Proposed Signs – Park Map on last page

1. Entrance Sign at Fox Lane and McKay Way

2. Garman Rock

- A landmark and focal point.
- Simple and clean



3. Entrance Kiosk

- Creates a focal point at the beginning of the trail to draw users into the trail system.
- Park Information and Rules
- Park Highlights
- Park Map
- Information on current Park maintenance and native plant community restoration activities.
- Directional Signs to Mounds, Waterloo Regional Trailhead Facility, and Nature Trail
- Donation Box
- Dog Bags



4. Nature Trail Interpretive Signs

- Nature Trail Directional Sign
- Potential Interpretive Sign Suggestions

Birds

- Pictures of commonly seen birds.
- Pictures of uncommon birds that live here such as pileated woodpecker.
- Description of the habitat that brings the birds here.

Wildlife

- Pictures of commonly seen wildlife.
- Description of habitat and food sources.



Common Flowering Native Plants

- Pictures and description of flowering plants commonly seen in the Preserve.
- Description of the existing woodland habitat.

Uncommon Native Plants

- Pictures and description of the Yellow Giant Hyssop, *Agastache nepetoides* (savanna indicator species) and other uncommon plants found in the Preserve and what their presence means as far as former plant communities in the Preserve.

Trees

- Pictures of common native trees in the preserve and what woodland and savanna plant communities look like.
- Species found in the Preserve, such as basswood and maple that were not here originally.

Invasive Plants

- A sign already exists with a boot scraper.
- Pictures of common invasive plants such as garlic mustard, burning bush, buckthorn, prickly ash, and box elder, and why they are being removed – crowding out more desirable plants that provide diverse food sources for wildlife.



Native Community Restoration

- Explain the long-term vegetative restoration plan that could significantly change the look of the preserve.
- Pictures of what the native communities could look like.
- Possible restoration activities.

Glacial Features and Geology

- Description of the Wisconsin Glaciation creating the landforms in and around the Preserve.
- Uniqueness of the drumlin field of which the Preserve is a part.
- Boulder train of large stone brought down from Canada by the glacier.
- One sign, either along the Nature Trail or at the Native American Mounds, could be a touchable map of the topography and relief of the preserve.

Area History

- Brief history of the Waterloo area.
- Map of 1830's Surveyor Notes, found in the Master Plan, indicates most trees in the area were black, white, and bur oak, and hickory.

Native American History

- Large interpretive panels will be located at the Native American Mounds. A small sign could be included along the Nature Trail as a teaser for the Mounds on the hill and for users who don't hike to the Mounds.
- A brief history of Native American culture and the mound builders.
- Picture of the Mounds on top of the hill.

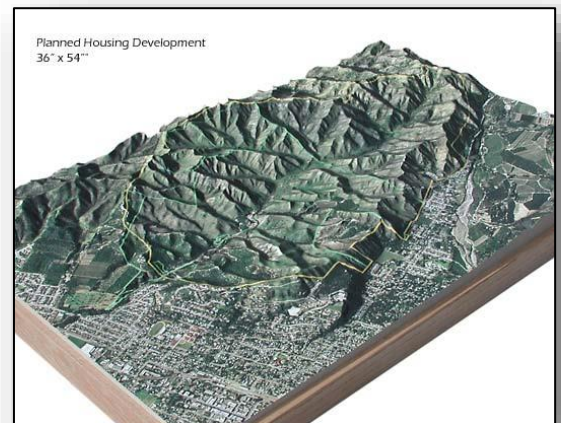
5. Trail Intersection

- Directional signs to the Mounds and Garman Parking Lot
- You Are Here Map
- Benches



6. Native American Mound Interpretive Node

- Large Kiosk
 - Mound Interpretation and Restoration
 - Topography/Geology Interpretation with raised brass topography map
 - Importance of the Maunesha River to Native Americans.
 - You Are Here Map
 - Directional Signs to Garman Parking and Waterloo Regional Trailhead Parking, and potentially the high point in the Preserve.
- Rustic Stone Sitting Wall
- Benches




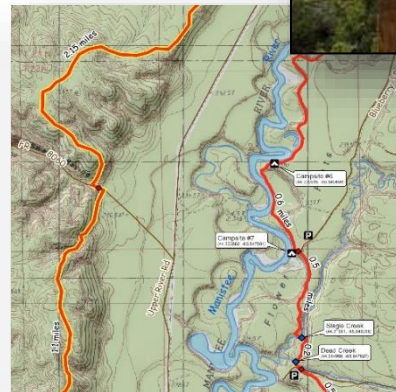
7. Native American Mound Interpretive Sign and Bench around the south end of the Mounds



8. Trail Intersection - Directional Signs and You Are Here Map

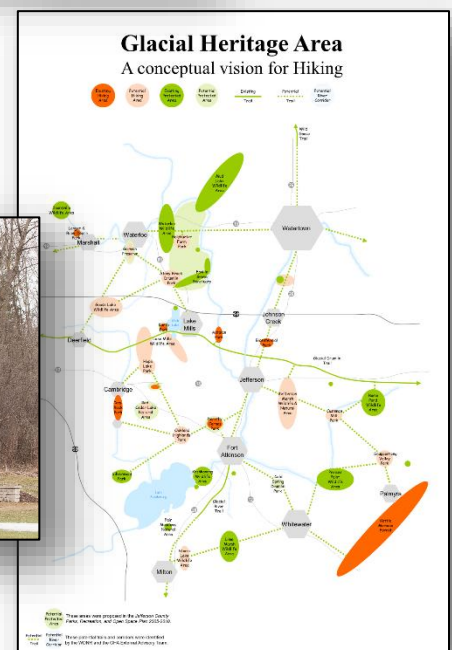
(Trail Intersection may be modified)

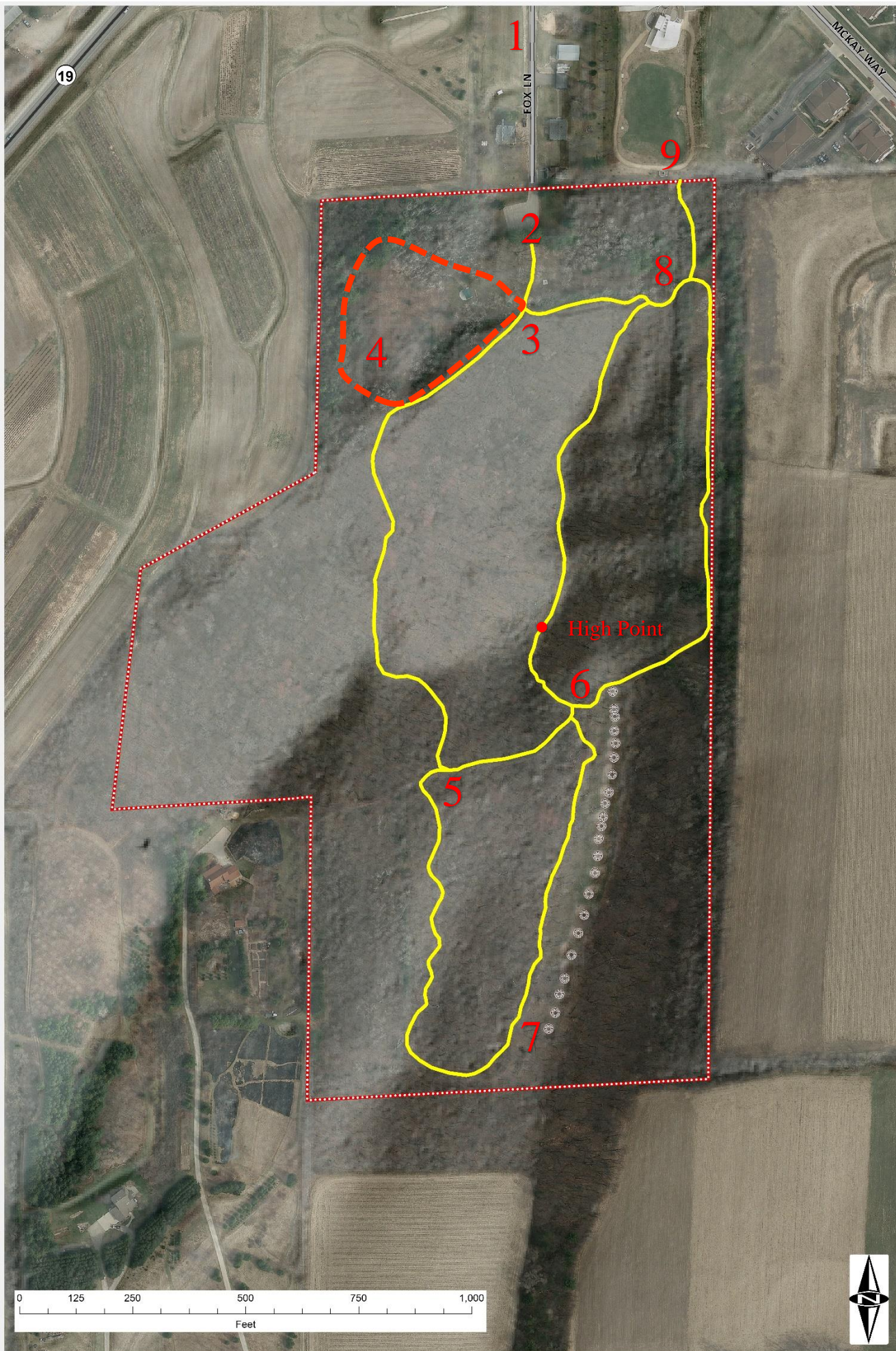
- Directional signs to the Mounds, Garman Parking, the Nature Trail, and the Waterloo Regional Trail Facility
 - You are here map
 - Benches
- 



9. Waterloo Regional Trailhead Facility Kiosk

- GHA Regional Map
- Garman Trail Map
- Directional Signs to Mounds, Garman Parking, Nature Trail







JEFFERSON COUNTY HUMAN RESOURCES

Courthouse
311 S Center Ave - Room 111
JEFFERSON, WISCONSIN 53549
Telephone (920) 674-7102
Fax (920) 675-0068

TERRI PALM KOSTROSKI
Human Resources Director

KAREN MUNDT
Benefits Administrator

CASEY RADTKE
Human Resources Specialist

KIM EGGERS
Safety Coordinator

DATE: March 20, 2017
TO: Department Heads
FROM: Terri M Palm
RE: 2018 Additional Personnel Requests

In accordance with Personnel ordinance HR0240, Establishing Positions, requests for additional personnel should be reviewed with the department's parent committee and submitted in writing to the Human Resources Director by June 1 of each year. However, many departments will begin preparation efforts for the 2017 budget process within the next month. This includes wages and benefits of staff, which is a significant portion of everyone's budget and requires more advanced attention to detail and planning. Therefore, please submit initial new position, elimination of position and status change (increase/decrease of hours) requests in writing by completing the "New Position Cover Form" on <https://jeffersonco.seamlessdocs.com/f/staffingchange> by **Friday, April 7, 2017**. **If the request is for a new position for which no current job description exists, a Job Description Questionnaire (JDQ) will also need to be completed and returned to Human Resources by Friday, April 21, 2017.**

Also, as the County continues to work on anticipating budgetary needs on a 5-year plan, it would be helpful if you would talk to your managers and/or supervisors and indicate on the form any staffing additions or reductions you foresee in the next few years.

Department Heads are reminded that any additional personnel requests that result in an increased tax levy cost in the 2018 Budget may require a corresponding reduction to other accounts (including Personal Services) within that Department's budget. Consideration may be given to those requests having an offsetting revenue or expenditure reduction that will continue for the duration of the position. Department Heads will need to show that they have exhausted all available means of maintaining current operations with existing staffing levels and that any additional staffing for workload changes or new programs is absolutely necessary.

Thank you.

Parks Committee Minutes
Jefferson County
Jefferson County Courthouse
311 S. Center Avenue, Room 112
Jefferson, WI 53549

Date: Monday, July 10, 2017

Time: 9:30 a.m.

Committee members: Foelker, Matt
Kelly, Mike
Nass, Steve

Payne, Laura
Tietz, Augie

1. Call to order

Tietz called the meeting to order at 9:32am

2. Roll call (establish a quorum)

Present: Tietz, Foelker, Nass, Kelly, Payne (@ 9:34)

Absent:

Others Present: Nehmer, Nimm, Hutter, Wiesmann, Ward, Wehmeier, Saxby

3. Certification of compliance with the Open Meetings Law

Meeting was noticed and posted according to law

4. Approval of the agenda

Nass/Foelker motion to approve the agenda as written. Motion passes 4/0

5. Approval of Park Committee minutes for June 5, 2017

Foelker/Nass motion to approve the minutes. Motion passes 4/0

6. Communication

Wehmeier – letter from Friends of Rose Lake

7. Public comment (Members of the public who wish to address the Committee on specific agenda items must register their request at this time)

No public comment

8. Discussion and Possible Action on Request to Rent Cappie's Landing

Tim Brown – Founders Float Paddle, Cappie's to RR. Shelter @ Rock River Park is rented. We would like to rope off a corral at Cappie's and are requesting to rent part of the park 7am-10am for mass boat launch at 9:30am. Would like Committee blessing to use or rent a large part of the park/launch out of courtesy to public use of the park.

Ward- cannot limit use of the park and would like the park to remain open for all to use.

Nass – 'warn' public about heavy use, do not close park

Ward – issue a group meeting permit (group larger than 20ppl)

Tietz – cars will not be parked at Cappie's?

Brown – we will shuttle users from the Johnson Creek High School

Ward – applicant disclose # of persons, arrangements of sanitation and garbage disposal, amplified sound system

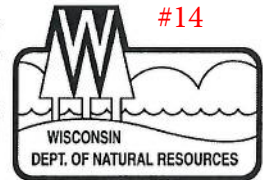
Tietz – questioned timing of boat launch project

Nass/Payne motion approve the issuance of a group permit for the event. Motion passes 4/0

9. Report from the Jefferson County Historical Site Preservation Council

Foelker – walked Potter's Field and are requesting the Parks Committee to ok the designation of Potter's Field as a Historical Landmark.

Nass – Council has met twice. Working on a work plan for the Council. Questioned report frequency by Council to Committee.



December 21, 2017



Joe Nehmer
Jefferson County
311 S Center Ave, Rm 204
Jefferson, WI 53549

Subject: 2017 County Conservation Aids Final Award Notification

Dear Joe:

Congratulations! On behalf of Governor Walker, we are pleased to notify you of your 2017 County Conservation Aids Final Award.

Jefferson County
2017 CCA Grant #: CC17-28WD
Project Title: Carlin Weld County Park Prairie Improvement Project
Total Project Cost: \$ 3500
Final Grant Award: \$ 1750
Grant Period: December 1, 2017 – June 30, 2019

Please keep this letter with your Grant Application/Grant Agreement for your records. If you have any questions, please let me know. You can contact me at 715-839-3751.

Sincerely,

Beth Norquist
County Conservation Aids Grant Manager