

Jefferson County Land & Water Conservation Committee Agenda
"Working Together to Protect & Enhance the Environment"

Jefferson County Courthouse
311 S Center Ave, Rm 112
Jefferson, WI 53549-1701

Wednesday, February 20, 2019 @ 8:00 am

Committee Members: Matthew Foelker (Chair), Walt Christensen (Vice-Chair), Ed Morse (Secretary), Dan Herbst (UWEX Member), Mike Kelly (UWEX Member), Frank Anfang (FSA Rep), and Margaret Burlingham (Public Member)

1. Call to Order
2. Roll Call (Establish a Quorum)
3. Certification of Compliance with the Open Meetings Law
4. Review of the February Agenda
5. Approval of the December 19, 2018 Meeting Minutes
6. Public Comment (members of the public who wish to address the Committee on specific agenda items must register their request at this time)
7. Communications
 - Department of Agriculture, Trade & Consumer Protection (DATCP) January & February 2019 Reports
8. Discussion on Natural Resources Conservation Service (NRCS) Report
9. Discussion and Possible Action on Extending Authorization to GIS Staff to Sign Non-Metallic Mining Agreements & Permits in the Absence of the Department Head
10. Discussion on 2019 Committee Meeting Calendar
11. Discussion on Request to Disturb at the County's Potters Field
12. Discussion on Annual Wisconsin Land & Water Conservation Association (WLWCA) Conference
13. Discussion and Possible Action on Resolutions for Consideration at the WLWCA Conference
14. Discussion and Possible Action on Notices of Noncompliance - Farmland Preservation Program (FPP)
15. Discussion and Possible Action on Cancellation of Notices of Noncompliance - FPP
16. Review of the Monthly Financial Report (November & December)
17. Discussion and Possible Action on Purchase of Agriculture Conservation Easements (PACE) Applications
18. Discussion on Jefferson County Land & Water Conservation Report on Baseline Documentation for Easements
19. Discussion on Items for the Next Agenda
20. Next Scheduled Meeting:
 - March 20, 2019 @ 8:00 am in Room 112
21. Adjournment

A quorum of any Jefferson County Committee, Board, Commission or other body, including the Jefferson County Board of Supervisors, may be present at this meeting.

Individuals requiring special accommodations for attendance at this meeting should contact the County Administrator 24 hours prior to the meeting at (920) 674-7101 so appropriate arrangements can be made.

Land & Water Conservation Committee Minutes

December 19, 2018

1. Call to Order:

The monthly meeting was called to order by Matt Foelker at 8:00 am. Committee members Matthew Foelker (Chairperson), Walt Christensen (Vice-Chairperson), Ed Morse (Secretary), Dan Herbst (UWEX Member), Mike Kelly (UWEX Member), Frank Anfang (FSA Rep), and Margaret Burlingham (Public Member) were present. Also in attendance were Mark Watkins, Director, Land & Water Conservation Department (LWCD); Kim Liakopoulos, LWCD; Patricia Cicero, LWCD; Nancy Lannert, LWCD; Jim Schroeder, County Board Chairman; and Kathy Turner Natural Resource Conservation Service (NRCS).

- Members of the Public in Attendance: None

2. Roll Call (Establish a Quorum):

A quorum was established.

3. Certification of Compliance with the Open Meetings Law:

It was determined that the committee was in compliance with the Open Meetings Law.

4. Review of the December Agenda:

The December agenda was reviewed by the committee members. County Board Chairman Schroeder requested Item #11 be moved right after Item #4. Christensen made a motion to move Item #11, Herbst seconded. Motion carried 7/0.

Item #11. Discussion and Possible Action on Development of the County Farm:

Discussion on the future development of the County Farm and the impact to the LWCD. No action was taken.

5. Approval of the November 21, 2018 Meeting Minutes:

Anfang made a motion to approve the November 21, 2018 meeting minutes as written, Burlingham seconded. Motion passed 7/0.

6. Public Comment:

There were no comments.

7. Communications:

- Department of Agriculture, Trade & Consumer Protection (DATCP) December 2018 Report.

8. Natural Resources Conservation Service (NRCS) Report:

Kathy Turner discussed the Natural Resources Conservation Service (NRCS) report.

9. Discussion and Possible Action on Conservation Reserve Enhancement Program (CREP)

Conservation Plan Revision Approval - Nancy Lannert: Anfang made a motion to accept the CREP Conservation Plan Revision, Burlingham seconded. Motion passed 7/0.

10. Discussion and Possible Action on Healthy Lakes Grant and Resolution - Patricia Cicero:

Cicero submitted a resolution for the committee's approval. Christensen made a motion to accept the Resolution for the 2019 Healthy Lakes Grant, Anfang seconded. Motion passed 7/0.

12. Discussion and Possible Action on Notices of Noncompliance - Farmland Preservation Program (FPP): There were no notices.

13. Discussion and Possible Action on Cancellation of Notices of Noncompliance - FPP:
There were no cancellations.

14. Review of the Monthly Financial Report (October):

The most recent statement of revenues and expenditures (October) was distributed.

15. Discussion and Possible Action on Purchase of Agriculture Conservation Easements (PACE) Applications: There are no new applications.

16. Discussion on Jefferson County Land & Water Conservation Report on Baseline Documentation for Easements: All baseline documentation is complete for the year.

17. Discussion on Items for the Next Agenda:

Anfang made a motion to postpone the January Land & Water Conservation Committee meeting with the possibility of calling a meeting if something time sensitive comes up, Burlingham seconded. Motion carried, 7/0. It was decided by the members that the next regularly scheduled meeting of the Land & Water Conservation Committee will be held on February 20, 2019 at 8:00 in Room 112. Possible agenda items include: Items #7-8, 12-18

18. Next Scheduled Meeting:

- February 20, 2019 @ 8:00 in Room 112

19. Adjournment:

Anfang made a motion to adjourn at 8:45 am, Christensen seconded. Motion passed 7/0.

Land & Water Conservation Committee Meeting – Feb. 20, 2019

Agenda Items #17 & 18

17. Applications

In January filed preliminary application materials, for the JCMS, LLC. – John Schultz comptroller. Property is approximately 70 acres – 40 tillable- remainder upland woods *(please see back of document for property location)*.

State allocation for 2019 partnering funds has not been announced at time of this report. NRCS state office was not part of the recent Federal Government funding lapse and their point of contact indicated that the JCMS property was ranking high among the other preliminary applicants. Signature sheets and updated documentation will be submitted to NRCS once funding and the application period is announced.

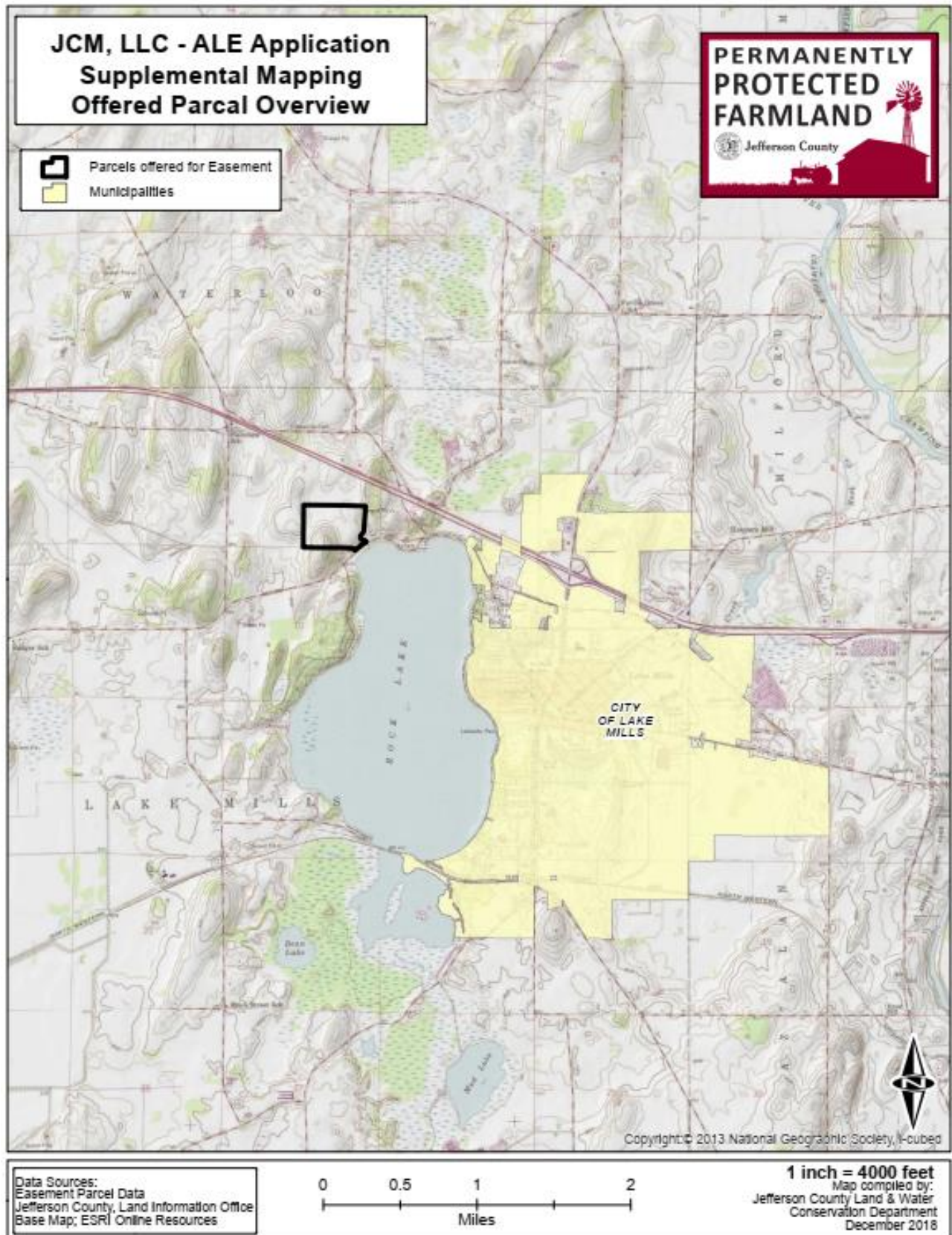
18. Information on Baseline Reports & Monitoring

Any easement landowner that spreads manure will be required to have or submit relevant spreading logs per each farming operation's nutrient management plan as part of the 2019 spring/summer monitoring. This includes three (3) of the County's purchased easements.

Any post meeting questions or follow-up you may contact the week of February 25th :

Gerry Kokkonen
GIS/Land Use Specialist
LWCD, RM 113
920.674.7117
geraldk@jeffersoncountywi.gov

Land & Water Conservation Committee Meeting – Feb. 20, 2019
Agenda Items #17 & 18



2019 Conference Breakout Sessions

Wednesday, March 13

1:45-2:45pm

Technical Roundtable Part A will focus on designing/repairing riparian and upland structures to endure intense hydrological events. **Part B from 3:15-4:15pm** will be a Q&A session where experienced staff answer engineering questions. *Moderated by Drew Zelle, DATCP.* **1 Engineering PDH**

Administrative Staff Roundtable. All staff are welcome to this moderated discussion on topics pertinent to running an efficient office, such as moving to a paperless environment, agency forms and reimbursements, and more.

What does divided government and a new governor mean for conservation policy in Wisconsin? WI Land+Water Executive Director Matt Krueger and lobbyist Shawn Pfaff will discuss how county conservation policies fit into the legislative session ahead, WI Land+Water legislative priorities, and the role committed conservationists can play in advocating for them. **1 Professional Development CEU**

Suck The Muck: Removal of Instream Legacy Sediments From Dorn Creek. Research has shown that instream *legacy sediments* often mask measurable changes in water quality as a result of conservation practice implementation. *Kyle Minks, Dane County LWRD, and Jim Amrhein, WDNR,* will talk about how both departments collaborated on, by collecting and analyzing watershed and instream data, the process used to evaluate both merit and feasibility of removing instream legacy sediments, planning and permitting aspects of project implementation, and results from the first 2.3 miles legacy sediment removal from Dorn Creek. **1 Soil & Water Management CEU**

Bale Grazing Basics will cover how to determine if a farm is suitable for bale grazing (outwintering) and the planning that goes into setting up a successful system. This presentation will look at practices that have a proven track record to successfully allow producers to bale graze. The “why” of bale grazing (soil health, cattle health, economics, and labor) will also be discussed. *Adam Abel, NRCS, and Serge Koenig, Sauk Co. CPZ.* **1 Crop Management CEU**

3:15-4:15pm

Technical Roundtable Part B. Q&A - continued from Part A above. **1 Engineering PDH**

Dark Sky Initiative. Stargazers from Driftless Stargazing LLC and the Iowa County Astronomers will be sharing a talk on enjoying and preserving the special dark skies of Wisconsin. Less than 100 years ago, everyone could look up and see a spectacular starry night sky. Now, millions of children across the globe will never experience the Milky Way where they live. The increased and widespread use of artificial light at night is not only impairing our view of the universe, it is adversely affecting our wildlife, our environment, our safety, our energy consumption and our health.

How to Advocate CREP to Landowners. How the Conservation Reserve Enhancement Program (CREP) is initially portrayed often makes all the difference in gaining landowner interest and eventual enrollment. Getting to know landowner goals and understanding their needs is essential when describing how CREP could work for them. The primary goal of enrollment may be to resolve a resource concern, but other program benefits such as reducing crop loss risk or providing a consistent source of annual funds for investing on the farm could be just as important to the landowner. The end result is an agreement that not only puts conservation practices on the ground but also establishes a partnership with landowners to help meet their needs. This presentation will review CREP along with its conservation and financial benefits. Then conservationists from across the state will share their experiences and stories promoting CREP and what works when trying to get landowners interest in the program. *Presenters: Brian Loeffelholz, DATCP, and others TBA.* **1 Crop Management CEU**

Invasive Plants in Wisconsin. *Kelly Kearns, WDNR*, will talk about identifying and control of common invasives, new species to watch for, slowing the spread, as well as working with regional Cooperative Invasive Species Management Areas and other local partners. **1 Crop Management CEU**

Targeted Funding Opportunities with NRCS. Learn about NRCS' landscape initiatives and regional conservation partnership program (RCPP) opportunities and how county, state, and organizations can apply for uniquely targeted conservation funding. *Speaker, Tom Krapf, USDA-NRCS.* **1 Professional Development CEU**

Thursday, March 14

8:00-9:15am

Like Han Solo and Chewbacca—Taking your Partnership to Light Speed. Successfully navigating a conservation department through the asteroid field of today's funding shortfalls and resource concerns requires respect, collaboration, and communication (even when you speak different languages). Hear lessons learned from experienced and savvy "pilots" in this stellar session on strengthening the LCC/LCD partnership. *Panel: Brad Matson, Iron Co. LCC; Monte Osterman, Racine Co. LCC; and more TBD.* **1 Professional Development CEU**

Health & Conservation: County-level partnerships to protect drinking water. Hear how local communities are working together to address health concerns in their drinking water. *Bruce Rheineck from DNR* will share an overview of Wisconsin's drinking water program, our dependence on groundwater, and data results highlighted in the 2018 Groundwater Coordinating Council's report. *Wood and Rock counties* from both Health and Conservation Departments will share how they are addressing community concerns of land use impacts on drinking water sources. **1 Soil & Water Management CEU**

The Challenge in Conservation: Ensuring that our Natural Resources are Protected. Soil is one of our critical natural resources and it is being degraded by our management practices and the climate. As we degrade our soils, we also affect our water and air quality and our ability to efficiently produce food and feed from our land. We can reverse this trend and build our soil; however, this will require some effort in utilizing diverse crop rotations, maintaining cover, and reducing tillage intensity. We have great opportunities to enhance our soils, improve our water quality, and increase climate resilience. The recipe for achieving this is relatively simple, we just have to focus on starting with the soil. *Speaker: Dr. Jerry L. Hatfield, National Laboratory for Agriculture and the Environment, Ames, IA.* **1 Soil & Water Management CEU**

The Cream of the Crop - NRCS Assistance for Producers. The National Resources Conservation Service is responsible for providing technical and financial assistance to agricultural producers to treat resource concerns. In this session, *Josh Odekirk* will provide relevant updates and the implications of recent changes to land conservation partners. **1 Soil & Water Management CEU**

Addressing Wicked Water Problems through Systems Thinking. We're all dealing with complex, challenging (wicked) water problems in our communities. Doing the same thing we've been doing for decades isn't going to solve these problems, we need new strategies and approaches. In this session, we'll provide an introduction to systems thinking and those who are using systems thinking to address their local wicked water issues will share their strategies and approaches. *Speaker: Jeremy Solin, ThinkWater.* **1 Soil & Water Management CEU**

9:45-11:00am

Unleash their Inner Conservationist. *Vernon County's Sarah McDowell and Ben Wojahn*, along with other members of the Youth Education Committee, will share fun ideas to engage students and teachers. **1 Professional Development CEU**

How to Launch a Well Testing Program. Incorporating lessons learned from work on groundwater & well water monitoring, we will provide examples of strategies/tools implemented by communities in Wisconsin. We will highlight important strategies to consider when designing and implementing a groundwater monitoring program as well as data

management, study design and recruitment efforts. *Speakers: Kevin Masarik, UW-Extension and UW-Stevens Point, and Dan Masterpole, Chippewa Co. LCD.* **1 Soil & Water Management CEU**

Stream Restoration and Fish & Non-Game Habitat; Streambank Easements and Maintenance. *Curt Diehl, Dane Co. LCD; Jeff Hastings, Trout Unlimited; and John Vosberg, NRCS* share latest techniques utilized for designing and installing habitat for trout and non-game species; location of different types of stream habitat; trout and non-game habitat practices; EQIP funding and required documentation; and streambank easements. **1 Engineering PDH / 1 Soil & Water Management CEU**

Grazing a Path Forward: Using Goats to Control Invasive Plants and Brush. *Cherrie Nolden* has 10 years of experience and a herd of 360 goats, and she'll share her knowledge on goats and the service they provide, available programs, and more applied information for land managers to better understand the opportunities and limitations of goats as a tool in the brush management toolbox. **1 Crop Management CEU**

Communicating Conservation Across Wisconsin. Developing an effective voice is essential for rallying support for conservation work. Communication tools, like press releases, news articles, social media, legislative advocacy, as well as communication resources available through the association will all be discussed to help you share your story. *Elliot Meyer, WI Land+Water and others TBA.* **1 Professional Development CEU**

1:15-2:30pm

Local Approaches to Protecting Drinking Water. Increasingly, communities are wielding their authority to enact local policies that protect their drinking water supply. In this interactive session, presenters will provide an overview of the topic, highlight specific examples and approaches, and discuss points for communities to consider as they pursue enhanced groundwater protection. *Speakers: Tressie Kamp, Midwest Environmental Advocates, and Kara O'Connor, Wisconsin Farmers Union.* **1 Soil & Water Management CEU**

Calming the Storm: Communicating During Conflict. Participants will learn how to remain effective communicators during difficult or conflicting situations. Participants will build their skills in active listening, the use of questions, and ability use dialogue to calm situations through better understanding diverse landowners' perspectives. Useful for both meetings or one-to-one interactions. *Speakers: Mindy Habecker and Jeff Hoffman, Dane County UW-Extension.* **1 Professional Development CEU**

Rebuilding Natural Infrastructure to Adapt to Extreme Weather. This interactive session will explore the landscape conditions, including loss of floodplain storage and degradation of wetlands, that greatly reduce watershed storage and contribute to downstream flood risks, erosion, and sedimentation. Participants will be engaged in a discussion on interdisciplinary strategies and potential practices that can be implemented by natural resources and emergency managers to improve watershed health and the resilience of communities to extreme weather. *Speakers: Kyle Magyera, WI Wetlands Assoc., and Danielle Shannon, Northern Institute of Applied Climate Science.* **1 Soil & Water Management CEU**

Adapting and Implementing Statewide Performance Standards for Resource Protection. Performance standards are perhaps our best tool for getting conservation on the landscape, and for dealing with pressing resource concerns like contaminated drinking water. However, consistent implementation of existing standards remains a challenge. This interactive session seeks to explore shared solutions between counties and agencies on the topic. *Speaker: Mike Gilbertson, WDNR.* **1 Professional Development CEU**

The Grand Solar Challenge: how communities are making Wisconsin solar ready. Attendees will learn about the Midwest Renewable Energy Association's (MREA) Grand Solar Challenge, an opportunity to facilitate solar market readiness and develop workforce training opportunities in conjunction with community-facing solar programs. Communities participating in the Grand Solar Challenge will be considered for receipt of donated solar modules and labor for city and non-profit solar projects. *Speaker: Peter Murphy, MREA.*

3:00-4:15pm

Manure Into Magic: Manure Composting. *John Rosenow is President of Cowsmo Inc., which produces compost under the brand name Cowsmo and sells into 17 states. Cowsmo sells compost and potting soil to a wide spectrum of growers from professionals to backyard gardeners. With 29 years of experience, John is considered an expert especially if he is more than 25 miles from home. He will cover rules that affect composters, types of compost, and organic rules about appropriate compost.*

Next *Jason Fuller, shares details on his company, Carbon Cycle Consulting, which serves the agriculture industry as a manure handling company, working with over 100 dairy farms in Wisconsin, Iowa and Minnesota. He's formed an alliance with a European engineering firm to build and operate well proven compost manufacturing plants on farms as an alternative to manure lagoons, allowing the farms to build a more value added product which can be used as a bedding material or as a biologically active and valuable fertilizer product to protect our groundwater, decrease production costs, increase yield and rebuild our soil. Additionally, a dry composted fertilizer product is also sold to other farmers who understand the value of and are enjoying the benefits of building their soil by using composted manure based products.*

1 Nutrient Management CEU

Tips and Tricks for stormwater plan review, permit issuance and enforcement. Reviewing stormwater management plans and issuing permits can be complicated! Come listen to two perspectives on lessons learned from county staff located opposite sides of the state. Learn about strategies to make the process easier for staff to process applications, turn reviews around quicker, and improve compliance. *Speakers: Alan Barrows, Waukesha Co. LCD, and Jacob Schweitzer, LaCrosse Co. LCD.*

Learning How to Listen: Citizen and Farmer Groups Supporting LCDs and Vice Versa. The Eau Pleine Partnership for Integrated Conservation (EPPIC), an up-and-coming community partnership based in western Marathon County, is composed of a variety of stakeholders with different perspectives on soil and water issues — including local conservation farmers, lake group members, and organization and agency representatives. The group was initiated through a meeting planned by Marathon County Conservation, Planning and Zoning Department, with the purpose of joining these different stakeholders around the same table to discuss our soil and water resource concerns. This meeting turned into monthly gatherings, which resulted in the formation of EPPIC. Over the past year, EPPIC has been working towards their main goal: to create a more environmentally resilient community that has a successful agricultural industry, as well as healthy natural resources. *Lauren Nichols, Marathon Co. CPZ, shares how they provided the framework for EPPIC, and how EPPIC helps build community capacity towards conservation to create a more resilient future for soil and water resources.*

Also, *Marty Weiss and Tony Peirick from Dodge County* will discuss how their successful farmer led group works with the local lake associations, UW-Extension, as well as the Land and Water Conservation Department to promote soil health practices such as cover crops and reduced tillage to help create more sustainable soils as well as improve water quality in their county.

1 Soil & Water Management CEU

Who Wants to Be a Public Official?! An Introductory Encounter with Open Meetings and Public Records Laws.

This interactive session will introduce the basics of Wisconsin's open government laws using a game show format.

Speaker: Philip J. Freeburg, JD, UW Extension Local Government Center. **1 Professional Development CEU**

Biological Indicators of Soil Health in Wisconsin. Biological indicators of soil health (POXC, PMC, and PMN) can serve as proxies of microbial activity, the nitrogen supply capacity of the soil, or how much carbon is available for microbes. This research will demonstrate how management practices (tillage, manure, and cover cropping) can influence these beneficial soil properties. *Speaker: Matt Ruark, PhD, UW-Madison.* **1 Soil & Water Management CEU**

Friday, March 15

8:00-9:00am

From Coal Mines to Jack Pines - The effort to reintroduce elk to Wisconsin. *SESSION REPEATED AT 9:15am.*

Wisconsin's elk reintroduction has evolved over more than 23 years. Thanks to the work of many great partners and

agency staff, the population continues to grow and culminated into the first elk hunt in state history in 2018. *Speaker: Kevin Wallenfang, WDNR.*

I Wanna Rock! Join us in exploring how rock is used in conservation projects. This session provides information on working with quarry operators to properly gain access into sites and to stockpiles. We will also discuss differences in quarry materials, and properly selecting the stone through gradation procedures and how this is relevant to specific practices. *Speakers: Seth Ebel, Dane Co. LCD; Ryan Glassmaker, DATCP; and Jason Weiker, Milestone Materials.* **1 Engineering PDH**

Going with the Flow: Basics of ... 1) Stormwater Discover how Dane County uses performance based requirements to regulate construction site erosion control. *Speaker: Jeremy Balousek, Dane Co. LCD.* **2) Limnology** Carolyn Scholl, Vilas Co. LCD, presents the basics of limnology, which includes aspects of the biological, chemical, physical, and geological characteristics and functions of inland waters. This includes the study of lakes, reservoirs, ponds, rivers, springs, streams, wetlands, and groundwater. **1 Soil & Water Management CEU**

County Presentations: Dane and Oneida. Susan Sandford, Dane Co. LWRD, will highlight three unique outreach/volunteer projects in Dane County: Native Plants for Schools and Communities, Storm Drain Mural Project, and Leaf-free Streets for Clean Water. Next, Michele Sadaukas from Oneida County will present Promoting Native Pollinator Conservation Across North Central Wisconsin: A 9-county Initiative. A project that began with roadside pollinator plantings in the Town of Three Lakes, WI, has now morphed into a *Pollinator Movement* for North Central Wisconsin. Join us to see how far we've come, and where we're going! We'll touch on how those original roadside plots are doing, lessons we've learned along the way, pollinator outreach (the good, the bad, and the ugly), and talk about our brand new grant award from Lumberjack RC&D! Bring your questions!! **1 Professional Development CEU**

Southwestern Wisconsin Groundwater & Geology Study: A multi county effort to better understand private drinking water. Grant, Iowa, and Lafayette Counties are collaborating with researchers from Wisconsin Geological and Natural History Survey (WGNHS) and USGS to begin understanding drinking water concerns in their region. Hear how these counties have joined into a multi county project, the pros and cons to a regional approach, and what they hope to gain from a better understanding of their drinking water resources. *Ken Bradbury (WGNHS), Joel Stokdyk (USGS), and Scott Laeser (Clean Wisconsin)* will share details about the study design, initial results, and next steps. **1 Soil & Water Management CEU**

9:15-10:15am

Field Properties for Completing Soil Borings. This session will provide training for classifying basic engineering soil properties for the NRCS 313 Manure Storage standard, using Web Soil Survey to assist with data collection. *Speakers: Tim Weisbrod, Jeremy Zeigler, NRCS.* **1 Engineering PDH**

From Coal Mines to Jack Pines - The effort to reintroduce elk to Wisconsin. (REPEATED FROM 8:00am) Wisconsin's elk reintroduction has evolved over more than 23 years. Thanks to the work of many great partners and agency staff, the population continues to grow and culminated into the first elk hunt in state history in 2018. *Speaker: Kevin Wallenfang, WDNR.*

From Big to Small - It Affects Us All: Addressing Drainage as Rural Areas are Developed. Drainage and peak flow changes on rural properties due to development can have negative impacts on downstream properties if they are not addressed properly. This session will present experiences addressing these concerns in ordinances, a case study, and discussion of obstacles to maintaining drainage on parcels not connected to receiving waters or drainage infrastructure. *Speakers: Brent Jalonen, Calumet Co. LWCD and Jeremy Freund, Outagamie Co. LCD.* **1 Soil & Water Management CEU**

A journey of organizational culture change and elegant leadership. What three words would your residents, elected officials, and staff use to describe your workplace? Nothing captures the county board's attention more than a front page story in a local newspaper where your department is being called out by a Town chair as "Brown Shirts, Gestapo, and

Nazis.” Marathon County will share their journey of how they transformed their department’s workplace culture into one that is now described as being honest, kind, and respectful to citizens, leaders, and staff. This was done by establishing clear core values, acceptable behaviors and being committed to a positive work culture. CPZ achieved success, even while enforcing ordinances and rules put in place to safeguard and protect the resources of the county. *Paul Daigle* will share the story of how elegant leadership paved the way for a culture change in their combined Conservation, Planning and Zoning Department, with a larger staff and segregated programs, where staff now work as a team and find a sense of purpose and joy in the work they do. **1 Professional Development CEU**

Wild Rice: Harvesting and Conservation Opportunities

Ben Wojahn, Vernon County LWCD, will focus on the harvesting aspects, and *Jason Fleener, WDNR*, will discuss the importance and values that wild rice provides to people, wildlife, and water quality. Conservation challenges and opportunities that counties may be engaged in will also be discussed. **1 Professional Development CEU**

RESOLUTION #1
TO RESTORE 3.6 MILLION IN FUNDING TO UW EXTENSION

WHEREAS, the UW Extension budget was cut 3.6 million dollars as part of the 250 million dollar reduction to the University of Wisconsin budget in the 2015-2017 State of Wisconsin budget representing the deepest cut to UW Extension in 103 years; and

WHEREAS, the UW Extension mission is to teach, learn, lead, and serve by connecting the public with the University of Wisconsin and engage with them in transforming lives; and

WHEREAS, over 50 UW Extension educator positions are unfilled in 2018; and

WHEREAS, agriculturally dependent counties throughout the state are without agriculture agents (Milwaukee Journal Sentinel Sunday, April 22, 2018 article); and

WHEREAS, farmers are stressed with low grain and milk prices; and

WHEREAS, the local county agent is the first point of contact for any questions or concerns regarding agriculture, horticulture, and natural resources; and

WHEREAS, cuts to UW Extension have impacted not only agriculture but also family living, community development, youth development, and 4H; and

WHEREAS, the lives of youth need the positive role model provided by Youth Development and 4H programs; and

WHEREAS, the community thread is made stronger by strong youth programs; and

WHEREAS, UW Extension educators know local people, schools, and community's needs and how to best address those needs; and

WHEREAS, tragedies across the United States call for personalized, powerful, model leadership; and

WHEREAS, state spending on worker recruitment, rebates to families, and economic support for business is necessary, so is this investment in our children, families, and communities – the lifeblood of Wisconsin society.

NOW, THEREFORE, BE IT RESOLVED that we urge the State of Wisconsin restore the full 3.6 million dollars cut from the UW Extension budget to allow a restoration of all educator positions cut from various UW Extension programs.

Adopted by the North Central Land and Water Conservation Association members, David Solin, President, August 10, 2018.

RESOLUTION #2

RECOMMEND CHANGES TO THE WISCONSIN FARMLAND PRESERVATION PROGRAM

WHEREAS, the Wisconsin Farmland Preservation Program (FPP) was established in 1978 to protect the states most valuable agricultural lands from development. Two avenues were created via legislation: local land use zoning or a special agreement with Department of Agriculture Trade and Consumer Protection (DATCP). Landowners who participated in the program were then eligible for a Wisconsin state income tax credit, if they met the financial criteria and the state's soil conservation standards. The peak years of the program resulted in approximately 23,900 statewide participants; and,

WHEREAS, in 2009, the state of Wisconsin made significant changes to the FPP administrative codes and statutes as part of the Working Lands Initiative, a suite of programs to protect farmland from development. Among the many changes to the FPP were setting new flat rates per acre for the income tax credits, adding a process for local areas to establish Agricultural Enterprise Areas (AEA), establishing a Purchase of Agricultural Conservation Easements (PACE) Program, and finally adding additional conservation standards; and,

WHEREAS, since the FPP rules were amended in 2009, the costs of implementing the required conservation standards has increased to a point where in some cases the cost of participating in the program has exceeded the available tax credits, which in turn has impacted the statewide program participation, currently estimated at 12,000 participants; and,

WHEREAS, the premise of the FPP tax credit was to ensure landowners were compensated for their conservation stewardship and to help offset the costs of implementing and maintaining the required conservation practices. To date this program has been the best available tool to ensure conservation best management practices are being maintained statewide; and,

WHEREAS, the long term net result of aforesaid changes was a decrease in the value of the tax credits to maintain the conservation standards which in turn has decreased the overall enrollment statewide. This decrease in enrollment is alarming and needs to be addressed as soon as possible; and,

WHEREAS, as part of the FPP redesign, the state of Wisconsin recognized the importance of PACE as a valuable tool to complement the long-term preservation of the most valuable working farmlands in the State and subsequently enrolled 14 participants. The statewide program was defunded due to a controversial funding mechanism, but remains in the Wisconsin state statutes; and,

WHEREAS, Local units of government, towns and counties continue to pursue the purchase of agricultural easements through locally funded programs with, in some cases, United States Department of Agriculture - Natural Resources Conservation Service grants. Also, numerous Agricultural Conservation Easements (ACE) have been donated to local land trusts. Many of the donated ACE's

remain eligible for the FPP but are not recognized by DATCP for their true farmland preservation value; and,

WHEREAS, WI Land+Water urges the State of Wisconsin to review the Farmland Preservation Program and increase each existing tax credit category by a minimum of \$2.50 per acre, add a new tax credit category to recognize landowners with ACEs and set the credit level for easements at a minimum tax credit level that can be found in the FPP zoned AEA's, and review the program every five years making the appropriate adjustments that reflect Best Management Practices (BMP) cost changes in the agriculture sector.

NOW, THEREFORE, BE IT RESOLVED, that the WI Land+Water requests the State of Wisconsin review the Farmland Preservation Program statutes and administrative codes to increase the allowable tax credits; amend the program eligibility to allow landowners who have Agricultural Conservation Easements the ability to participate in the FPP, if they meet the financial and conservation criteria; establish a new tax credit level for Agricultural Conservation Easements; reestablish funding for the statewide PACE program through a redesigned funding mechanism; and increase the frequency of review of the Farmland Preservation Program allowable tax credits to assure they are meeting the basic costs associated with program participation.

BE IT FURTHER RESOLVED, that a copy of this resolution be sent to all state legislators, the governor, DATCP Secretary and the WI Counties Association.

Adopted by the Southern Area Land and Water Conservation Association October 25, 2018.

RESOLUTION #3

IN SUPPORT OF REFORMING WISCONSIN'S EMINENT DOMAIN LAWS

WHEREAS, many private property owners in Wisconsin feel their property rights, under current Wisconsin Law, are not adequately protected from encroachment by outside entities, be they local, out of state, or international; and,

WHEREAS, eminent domain has historically been used sparingly for ensuring the public good with provable need and just compensation; and,

WHEREAS, public good cannot be construed to mean promotion of projects for private gain by outside corporate entities; and,

WHEREAS, a clearly defined and demonstrated “public good” has historically included issues demonstrating a true community need such as roadways, schools, public parks, public housing, and community centers; and,

WHEREAS, any other claimed cause for the taking of private property shall be proven to be for a public good in court of law; and,

WHEREAS, eminent domain shall not be used for any taking which is not for public good; and,

WHEREAS, a special legislative commission on the use of eminent domain power for private gain would be established to allow the public and local communities to voice their concerns over its use for private gain and for the State Legislator to explore revisions and amendments to the current eminent domain requirements in Chapter 32 Wisconsin Statutes; and,

NOW, THEREFORE BE IT RESOLVED that the WI Land+Water requests that State of Wisconsin establish a special legislative commission on the use of eminent domain for private gain in order to allow the State Legislature to pursue a change of law for the protection of its citizens' private rights.

BE IT FURTHER RESOLVED that a copy of this resolution be forwarded to the governor, the state legislators, the Public Service Commission and the WI Counties Association.

Adopted by the Southern Area Land and Water Conservation Association October 25, 2018.



DATCP REPORT
Bureau of Land and Water Resources
January 2019

Soil and Water Resource Management Grants

- DATCP and DNR will be releasing the 2020 joint grant application in late January. DATCP application materials will be posted on this [website](#)¹.

Annual Reporting

- The link to the annual report questions for the counties was sent out on December 21. If your county did not receive the link, please contact me. The deadline for completing the reporting questions is March 15. This gives us the chance to get the report finished as soon as possible. Contact Coreen.Fallat@wisconsin.gov if you have any questions.

Land Verification Standard work group

- DATCP has convened a team through Standards Oversight Council that will develop standards for verification of land features including depth to bedrock. The Standards Oversight Council has established a [website](#)² to track the team's progress.

Producer-Led Watershed Protection Grants

- Producer-Led Watershed Protection Grants were awarded to 24 groups for 2019. Five are first-time grant recipients. More information about grant recipients is available on our [website](#).³
- The third annual Producer-Led Watershed Protection Grants Workshop will be held on February 19, 2019 in partnership with Wisconsin Cover Crop Conference (held on February 20, 2019). At least one member from each producer-led group is required to attend. For more information and to register, visit this [website](#).⁴

Farmland Preservation Program

- In 2018, farmland preservation zoning ordinances were approved for 10 new zoning jurisdictions covering parts of 26 towns. In total, new zoning certifications in 2018 increased the number of acres eligible for the farmland preservation program by about 227,568 acres.
- Farmland Preservation Plans were certified for Bayfield, Buffalo and Douglas Counties.
- Farmland Preservation Plan Amendments were approved for Buffalo, Burnett, Clark, Dodge, Outagamie, Sheboygan, Trempealeau, Waukesha and Waupaca Counties.
- Farmland Preservation Zoning Ordinances were approved for the Village of Kekoskee in Dodge County, the Town of Colby in Clark County, the Town of Lincoln in Kewaunee County, Buffalo County (Towns of Alma, Belvidere, Cross, Dover, Glencoe, Modena, Mondovi, Naples and Nelson), Burnett County (Towns of Anderson, Dewey, Granzburg, Roosevelt, Rusk, Scott, Swiss and Trade Lake), Adams County (Towns of Adams, Colburn, Dell Prairie, New Chester, New Haven, Preston and Richfield), and the Town of Troy in St. Croix County.
- A Farmland Preservation Zoning Ordinance amendment was approved for Waupaca County to extend coverage to the Town of Farmington.
- Three new agricultural enterprise areas were designated in 2018. They include: The Three Rivers AEA, Farming for the Future AEA, and the Town of Troy AEA.

¹ https://datcp.wi.gov/Pages/Programs_Services/SWRMSect6.aspx

² <https://socwisconsin.org/current-work/full-process/01-verification-of-land-features/>

³ https://datcp.wi.gov/Pages/News_Media/ProducerLedRecipients2019.aspx

⁴ <https://wisconsinlandwater.org/events/producer-led-annual-workshop>

Land and Water Conservation Board and LWRM Plans

- A reminder to the counties scheduled for 2019 LWRM plan revisions or reviews; check your timelines. Final plan revision and board materials need to be submitted 3-4 weeks prior to the LWCB meeting. If you have any questions or need help with the planning process please contact Lisa.Trumble@wisconsin.gov.

Livestock Facility Siting

- DATCP has recovered the technical expert committee to update the group's 2015 recommendations based on recent developments including the latest draft of ATP 51. The committee's first meeting was on December 21st. DATCP has a [website](#)⁵ to track committee activities.

Conservation Reserve Enhancement Program (CREP)

- A new Farm Bill (Food Security Act of 1985) was signed by the President on December 20, 2018. Details about changes to CREP have not yet been forwarded by FSA. We do expect some adjustments to the rental rates under the new Farm Bill in addition to the CRP acreage cap increase to 27 million by 2023. While most FSA offices are closed due to the partial federal government shut down, LCD offices can still continue to assist landowners interested in enrolling new CREP acres by getting the State CREP application process started and continuing to promote CREP to landowners.
- Counties should provide DATCP with their "County CREP Annual Report" with costs from 10/1/2017 to 9/30/2018. County contributions to administer CREP count toward Wisconsin's overall match requirements for federal CREP funding and are an important contribution to statewide CREP requirements.
- Please remember to submit State CREP agreements to DATCP for processing soon after the CRP1 becomes effective. Agreement forms should be submitted to DATCP via the secure SFTP site.

⁵ https://datcp.wi.gov/Pages/Programs_Services/LSTechExpertCom.aspx



DATCP REPORT
Bureau of Land and Water Resources
February 2019

Soil and Water Resource Management Grants

- Reminder: Reimbursement requests for 2018 SWRM grant allocations are due February 15, 2019.
- The 2020 Joint DATCP/DNR Nonpoint Source Grant Application is available on the DATCP website. Email applications to datcpswrm@wisconsin.gov by April 15, 2019.

Conservation Partner Meetings

- Please mark your calendars. DATCP, in cooperation with DNR, will again be hosting conservation partner meetings. The meetings facilitate discussion about conservation programs and challenges. There will be five meetings in March and April around the state. Please visit this [link](#)¹ to see **dates and locations** and to let us know what topics you want to talk about.

Runoff Risk Advisory Forecast

- The [Runoff Risk Advisory Forecast](#)² has been updated to offer more detailed and localized information to help determine a good time to spread manure. The updated RRAF now shows data based upon a system that uses a four-kilometer grid. In addition to the precipitation forecast, the new version will also provide soil temperatures and saturation based on computer models. And it will make it easier to find previous day snapshots, a tool that farmers often use to document adherence to their nutrient management plans.

Annual Reporting

- Reminder: The deadline for completing annual reporting questions is **March 15**. We have received responses from 16% of counties so far! Contact Coreen.Fallat@wisconsin.gov with questions or if you need the link resent. Thanks!

Land Verification Standard work group

- DATCP has convened a team through Standards Oversight Council to develop standards for verification of land features including depth to bedrock. The Standards Oversight Council has established a [website](#)³ to track the team's progress.

Producer-Led Watershed Protection Grants

- The third annual Producer-Led Watershed Protection Grants Workshop will be held on February 19, 2019 in partnership with Wisconsin Cover Crop Conference (held on February 20, 2019). At least one member from each producer-led group is required to attend. For more information and to register, visit this [website](#).⁴

Farmland Preservation Program

- DATCP is currently accepting applications for farmland preservation planning grants. The application form is attached to this report. Please contact DATCPWorkingLands@wisconsin.gov or 608-224-4621 for information on eligible expenses that could be reimbursed through the grant.
- The 2019 AEA petition period is now open. Please visit this [website](#)⁵ for the 2019 petition materials.

¹ <https://www.surveymonkey.com/r/2019PartnerMtgs>

² <http://www.manureadvisorysystem.wi.gov/app/runoffrisk>

³ <https://socwisconsin.org/current-work/full-process/01-verification-of-land-features/>

⁴ <https://wisconsinlandwater.org/events/producer-led-annual-workshop>

⁵ https://datcp.wi.gov/Pages/Programs_Services/AEAPetitionInfo.aspx

Land and Water Conservation Board and LWRM Plans

- At the February 5th meeting, Monroe County will be presenting their LWRM plan revision and Wood County will present a five year review of their plan progress. Ken Bradbury, Wisconsin Geological and Natural History Survey, will present on the initial groundwater study results for Grant, Iowa, and Lafayette Counties.

Livestock Facility Siting

- The technical expert committee held a second meeting on January 29 to update their 2015 recommendations pertaining to setbacks and the odor standard, based on more recent developments including the latest draft of ATCP 51. DATCP has a [website](#)⁶ to track committee activities.

Conservation Reserve Enhancement Program (CREP)

- Update on the Farm Bill and CREP enrollment authority: FSA National is currently working on writing the notice that will provide authority for CREP enrollment. FSA State believes that once authority is given, WI CREP should be ready to begin accepting offers again. The notice will also provide details regarding any changes to CREP. These will include adjustment to the cropping history period, rental rate changes and modification of the FSA Signing Incentive Payment (SIP) calculation. LCD offices can continue to assist landowners interested in enrolling new CREP acres by getting the State CREP application process started and continuing to promote CREP to landowners.

Agricultural Impact Statement (AIS) Program

- DATCP is writing an AIS for the high-voltage electric project, Cardinal-Hickory Creek, between Cassville in Grant County to Middleton in Dane County. DATCP is working with the Public Service Commission, providing draft agricultural sections for their Environmental Impact Statement (EIS). For more information, contact Marilyn Weiss (marilyn.weiss@wisconsin.gov) at 608-224-4650.
- DATCP is writing an AIS for the Lakeshore Lateral natural gas project proposed by We Energies in the counties of Walworth, Kenosha, and Racine. The approximately 50-mile pipeline, if approved by the Public Service Commission, would be along one of two potential routes. For more information, contact Alice Halpin (alice.halpin@wisconsin.gov) at 608-224-4646.

Conservation Engineering

- REMINDER: NRCS Ecological Sciences Job Approval (ESJAA) is now required to plan, design and install conservation practices that are completed through an NRCS program. Note: State-funded (SWRM) projects with no Federal funding do not require ESJAA, and DATCP Engineering Certification will operate as before. If you are interested in obtaining NRCS ESJAA, staff supervisors should submit a request to your Assistant State Conservationist for Field Operations (ASTC-FO), and your Area Resource Conservationist (ARC) will work with you on obtaining the desired ESJAA.

⁶ https://datcp.wi.gov/Pages/Programs_Services/LSTechExpertCom.aspx

12/21/2018
10:22:04

Jefferson County
FLEXIBLE PERIOD REPORT

PAGE 1
glflxrpt

FROM 2018 01 TO 2018 11

ACCOUNTS FOR:	ORIGINAL	TRANFRS/	REVISED			AVAILABLE	PCT
100 General Fund	APPROP	ADJSTMTS	BUDGET	ACTUALS	ENCUMBRANCES	BUDGET	USED
<hr/>							
12401 Land Conservation							
12401 411100 General Property Taxes	-364,433	0	-364,433	-334,063.62	.00	-30,369.38	91.7%
12401 421001 State Aid	-183,500	0	-183,500	-173,606.00	.00	-9,894.00	94.6%
12401 432099 Other Permits	-250	0	-250	.00	.00	-250.00	.0%
12401 451010 Sale Of Maps & Plat Books	-250	0	-250	-52.30	.00	-197.70	20.9%
12401 451020 Other Fees	0	0	0	-75.40	.00	75.40	.0%
12401 451421 Crep Cancellation Fee	-250	0	-250	.00	.00	-250.00	.0%
12401 458001 Tree Sales	-10,000	0	-10,000	-6,691.80	.00	-3,308.20	66.9%
12401 458005 Ag & Hortic Supply Revenue	-250	0	-250	-25.00	.00	-225.00	10.0%
12401 458009 Livestock Siting App Review F	-2,500	0	-2,500	-1,950.00	.00	-550.00	78.0%
12401 458013 Farmland Cert Fee	-22,500	0	-22,500	-17,980.00	.00	-4,520.00	79.9%
12401 511110 Salary-Permanent Regular	95,918	0	95,918	70,872.04	.00	25,045.96	73.9%
12401 511210 Wages-Regular	299,787	0	299,787	243,667.85	.00	56,119.15	81.3%
12401 511310 Wages-Sick Leave	0	0	0	12,558.19	.00	-12,558.19	.0%
12401 511320 Wages-Vacation Pay	0	0	0	24,728.46	.00	-24,728.46	.0%
12401 511330 Wages-Longevity Pay	1,189	0	1,189	1,143.75	.00	45.25	96.2%
12401 511340 Wages-Holiday Pay	0	0	0	11,861.57	.00	-11,861.57	.0%
12401 511350 Wages-Miscellaneous(Comp)	0	0	0	2,620.43	.00	-2,620.43	.0%
12401 511380 Wages-Bereavement	0	0	0	779.04	.00	-779.04	.0%
12401 512141 Social Security	30,020	0	30,020	27,493.82	.00	2,526.18	91.6%
12401 512142 Retirement (Employer)	26,592	0	26,592	24,672.67	.00	1,919.33	92.8%
12401 512144 Health Insurance	77,333	0	77,333	65,775.57	.00	11,557.43	85.1%
12401 512145 Life Insurance	130	0	130	120.35	.00	9.65	92.6%
12401 512150 FSA Contribution	1,250	0	1,250	1,125.00	.00	125.00	90.0%
12401 512173 Dental Insurance	5,904	0	5,904	4,884.15	.00	1,019.85	82.7%
12401 531003 Notary Public Related	80	0	80	.00	.00	80.00	.0%
12401 531298 United Parcel Service	50	0	50	.00	.00	50.00	.0%
12401 531301 Office Equipment	750	0	750	143.95	.00	606.05	19.2%
12401 531303 Computer Equipmt & Software	1,000	0	1,000	.00	.00	1,000.00	.0%
12401 531311 Postage & Box Rent	1,550	0	1,550	802.89	.00	747.11	51.8%
12401 531312 Office Supplies	1,200	0	1,200	359.84	.00	840.16	30.0%
12401 531313 Printing & Duplicating	750	0	750	187.47	.00	562.53	25.0%
12401 531314 Small Items Of Equipment	1,750	0	1,750	63.62	.00	1,686.38	3.6%
12401 531321 Publication Of Legal Notice	100	0	100	.00	.00	100.00	.0%
12401 531324 Membership Dues	2,000	0	2,000	1,856.00	.00	144.00	92.8%
12401 531341 Agricultural & Hortic Suppli	6,000	0	6,000	4,548.88	.00	1,451.12	75.8%
12401 531348 Educational Supplies	200	0	200	.00	.00	200.00	.0%
12401 531351 Gas/Diesel	1,500	0	1,500	920.62	.00	579.38	61.4%
12401 532325 Registration	1,000	0	1,000	620.00	.00	380.00	62.0%

12/21/2018
10:22:04

Jefferson County
FLEXIBLE PERIOD REPORT

PAGE 2
glflxrpt

FROM 2018 01 TO 2018 11

ACCOUNTS FOR:
100 General Fund

	ORIGINAL APPROP	TRANFRS/ ADJSTMTS	REVISED BUDGET	ACTUALS	ENCUMBRANCES	AVAILABLE BUDGET	PCT USED
12401 532332 Mileage	200	0	200	.00	.00	200.00	.0%
12401 532335 Meals	200	0	200	36.67	.00	163.33	18.3%
12401 532336 Lodging	600	0	600	538.08	.00	61.92	89.7%
12401 533225 Telephone & Fax	500	0	500	109.35	.00	390.65	21.9%
12401 533236 Wireless Internet	1,850	0	1,850	1,746.85	.00	103.15	94.4%
12401 535242 Maintain Machinery & Equip	1,200	0	1,200	694.08	.00	505.92	57.8%
12401 535259 Tree Planter Service	100	0	100	.00	.00	100.00	.0%
12401 571004 IP Telephony Allocation	760	0	760	696.63	.00	63.37	91.7%
12401 571005 Duplicating Allocation	144	0	144	132.00	.00	12.00	91.7%
12401 571009 MIS PC Group Allocation	14,968	0	14,968	13,720.63	.00	1,247.37	91.7%
12401 571010 MIS Systems Grp Alloc(ISIS)	4,969	0	4,969	4,554.88	.00	414.12	91.7%
12401 591519 Other Insurance	2,389	0	2,389	2,774.21	.00	-385.21	116.1%
12402 Wildlife Crop Damage							
12402 421001 State Aid	-20,000	0	-20,000	-11,628.38	.00	-8,371.62	58.1%
12402 529299 Purchase Care & Services	20,000	0	20,000	15,928.72	.00	4,071.28	79.6%
12403 Nutrient Management							
12403 458012 Public Land Consrv Fees	-250	0	-250	-160.00	.00	-90.00	64.0%
12403 535349 Other Supplies	250	0	250	43.89	.00	206.11	17.6%
12404 Local Cost Share Program							
12404 421001 State Aid	-3,300	0	-3,300	.00	.00	-3,300.00	.0%
12404 521219 Other Professional Serv	3,000	0	3,000	2,000.00	.00	1,000.00	66.7%
12404 521219 24402 Other Professional Serv	0	0	0	1,950.69	.00	-1,950.69	.0%
12404 529299 Puchase Care & Services	300	0	300	.00	.00	300.00	.0%
12405 DATCP Cost Share							
12405 421003 State Aid GPR	-14,000	0	-14,000	-770.00	.00	-13,230.00	5.5%
12405 421004 State Aid Bonded	-35,000	0	-35,000	-32,101.03	.00	-2,898.97	91.7%
12405 593701 Cost Share Payment	49,000	0	49,000	26,587.50	.00	22,412.50	54.3%
12406 Non-Metallic Mining							
12406 411100 General Property Taxes	10,995	0	10,995	10,078.75	.00	916.25	91.7%

12/21/2018
10:22:04

Jefferson County
FLEXIBLE PERIOD REPORT

PAGE 3
glflxrpt

FROM 2018 01 TO 2018 11

ACCOUNTS FOR:
100 General Fund

	ORIGINAL APPROP	TRANFRS/ ADJSTMTS	REVISED BUDGET	ACTUALS	ENCUMBRANCES	AVAILABLE BUDGET	PCT USED
12406 432005 Non-Metallic Annual Fee	-9,445	0	-9,445	.00	.00	-9,445.00	.0%
12406 474175 Highway Billed	-2,035	0	-2,035	.00	.00	-2,035.00	.0%
12406 531311 Postage & Box Rent	60	0	60	32.10	.00	27.90	53.5%
12406 531312 Office Supplies	50	0	50	.00	.00	50.00	.0%
12406 531348 Educational Supplies	25	0	25	24.00	.00	1.00	96.0%
12406 532325 Registration	150	0	150	35.00	.00	115.00	23.3%
12406 532332 Mileage	50	0	50	.00	.00	50.00	.0%
12406 532335 Meals	50	0	50	.00	.00	50.00	.0%
12406 532336 Lodging	100	0	100	.00	.00	100.00	.0%
<hr/> 12407 Farmland Easement <hr/>							
12407 481001 Interest & Dividends	0	0	0	-2,912.47	.00	2,912.47	.0%
12407 531311 Postage & Box Rent	0	0	0	20.73	.00	-20.73	.0%
12407 531312 Office Supplies	0	0	0	125.00	.00	-125.00	.0%
12407 531313 Printing & Duplicating	0	0	0	11.00	.00	-11.00	.0%
12407 571005 Duplicating Allocation	76	0	76	69.63	.00	6.37	91.6%
12407 594950 Operating Reserve	0	32,253	32,253	.00	.00	32,253.20	.0%
12407 594960 Capital Reserve	92,805	0	92,805	.00	.00	92,805.00	.0%
12407 699800 Resv Applied Capital	-92,881	-32,253	-125,134	.00	.00	-125,134.20	.0%
<hr/> 12408 County Farm <hr/>							
12408 411100 General Property Taxes	103,688	0	103,688	95,047.37	.00	8,640.63	91.7%
12408 482003 County Farm Land Rent	-105,688	0	-105,688	-90,383.85	.00	-15,304.15	85.5%
12408 529170 Grounds Keeping Charges	1,000	0	1,000	1,290.69	.00	-290.69	129.1%
12408 535249 Sundry Repair	1,000	0	1,000	.00	.00	1,000.00	.0%

12/21/2018
 10:22:04

Jefferson County
 FLEXIBLE PERIOD REPORT

PAGE 4
 glflxrpt

FROM 2018 01 TO 2018 11

	ORIGINAL APPROP	TRANFRS/ ADJSTMTS	REVISED BUDGET	ACTUALS	ENCUMBRANCES	AVAILABLE BUDGET	PCT USED
--	--------------------	----------------------	-------------------	---------	--------------	---------------------	-------------

GRAND TOTAL	0	0	0	7,654.76	.00	-7,654.76	.0%
-------------	---	---	---	----------	-----	-----------	-----

12/21/2018
 10:22:04

Jefferson County
 FLEXIBLE PERIOD REPORT

PAGE 5
 glflxrpt

REPORT OPTIONS

	Field #	Total	Page Break
Sequence 1	1	N	Y
Sequence 2	9	N	N
Sequence 3	0	N	N
Sequence 4	0	N	N

Report title:

FLEXIBLE PERIOD REPORT

Includes accounts exceeding 0% of budget.
 Print Full or Short description: F
 Print full GL account: N
 Sort by full GL account: N
 Print Revenues-Version headings: N
 Print revenue as credit: Y
 Print revenue budgets as zero: N

From Yr/Per: 2018/ 1
 To Yr/Per: 2018/11
 Budget Year: 2018
 Print totals only: N
 Format type: 1
 Double space: N
 Suppress zero bal accts: Y
 Amounts/totals exceed 999 million dollars: N
 Roll projects to object: N
 Print journal detail: N
 From Yr/Per: 2018/ 1
 To Yr/Per: 2018/11
 Include budget entries: Y
 Incl encumb/liq entries: Y
 Sort by JE # or PO #: J
 Detail format option: 1
 Multiyear view: D

01/25/2019
13:47:15

Jefferson County
FLEXIBLE PERIOD REPORT

PAGE 1
glflxrpt

FROM 2018 01 TO 2018 12

ACCOUNTS FOR:		ORIGINAL	TRANFRS/	REVISED			AVAILABLE	PCT
100 General Fund		APPROP	ADJSTMTS	BUDGET	ACTUALS	ENCUMBRANCES	BUDGET	USED
<hr/>								
12401 Land Conservation								
<hr/>								
12401	411100	General Property Taxes	-364,433	0	-364,433	-364,433.04	.00	.04 100.0%
12401	421001	State Aid	-183,500	0	-183,500	-173,606.00	.00	-9,894.00 94.6%
12401	432099	Other Permits	-250	0	-250	.00	.00	-250.00 .0%
12401	451010	Sale Of Maps & Plat Books	-250	0	-250	-52.30	.00	-197.70 20.9%
12401	451020	Other Fees	0	0	0	351.11	.00	-351.11 .0%
12401	451421	Crep Cancellation Fee	-250	0	-250	.00	.00	-250.00 .0%
12401	458001	Tree Sales	-10,000	0	-10,000	-7,771.80	.00	-2,228.20 77.7%
12401	458005	Ag & Hortic Supply Revenue	-250	0	-250	-25.00	.00	-225.00 10.0%
12401	458009	Livestock Siting App Review F	-2,500	0	-2,500	-1,950.00	.00	-550.00 78.0%
12401	458013	Farmland Cert Fee	-22,500	0	-22,500	-17,980.00	.00	-4,520.00 79.9%
12401	511110	Salary-Permanent Regular	95,918	0	95,918	78,861.26	.00	17,056.74 82.2%
12401	511210	Wages-Regular	299,787	0	299,787	267,470.38	.00	32,316.62 89.2%
12401	511310	Wages-Sick Leave	0	0	0	13,064.97	.00	-13,064.97 .0%
12401	511320	Wages-Vacation Pay	0	0	0	25,927.02	.00	-25,927.02 .0%
12401	511330	Wages-Longevity Pay	1,189	0	1,189	1,143.75	.00	45.25 96.2%
12401	511340	Wages-Holiday Pay	0	0	0	11,861.57	.00	-11,861.57 .0%
12401	511350	Wages-Miscellaneous(Comp)	0	0	0	2,620.43	.00	-2,620.43 .0%
12401	511380	Wages-Bereavement	0	0	0	779.04	.00	-779.04 .0%
12401	512141	Social Security	30,020	0	30,020	29,991.09	.00	28.91 99.9%
12401	512142	Retirement (Employer)	26,592	0	26,592	26,878.20	.00	-286.20 101.1%
12401	512144	Health Insurance	77,333	0	77,333	70,579.94	.00	6,753.06 91.3%
12401	512145	Life Insurance	130	0	130	134.95	.00	-4.95 103.8%
12401	512150	FSA Contribution	1,250	0	1,250	1,125.00	.00	125.00 90.0%
12401	512173	Dental Insurance	5,904	0	5,904	5,391.51	.00	512.49 91.3%
12401	531003	Notary Public Related	80	0	80	.00	.00	80.00 .0%
12401	531298	United Parcel Service	50	0	50	.00	.00	50.00 .0%
12401	531301	Office Equipment	750	0	750	649.45	.00	100.55 86.6%
12401	531303	Computer Equipmt & Software	1,000	0	1,000	.00	.00	1,000.00 .0%
12401	531311	Postage & Box Rent	1,550	0	1,550	1,146.27	.00	403.73 74.0%
12401	531312	Office Supplies	1,200	0	1,200	641.75	.00	558.25 53.5%
12401	531313	Printing & Duplicating	750	0	750	255.81	.00	494.19 34.1%
12401	531314	Small Items Of Equipment	1,750	0	1,750	246.01	.00	1,503.99 14.1%
12401	531321	Publication Of Legal Notice	100	0	100	.00	.00	100.00 .0%
12401	531324	Membership Dues	2,000	0	2,000	1,856.00	.00	144.00 92.8%
12401	531341	Agricultural & Hortic Suppli	6,000	0	6,000	4,548.88	.00	1,451.12 75.8%
12401	531348	Educational Supplies	200	0	200	.00	.00	200.00 .0%
12401	531351	Gas/Diesel	1,500	0	1,500	988.68	.00	511.32 65.9%
12401	532325	Registration	1,000	0	1,000	620.00	.00	380.00 62.0%

01/25/2019
13:47:15

Jefferson County
FLEXIBLE PERIOD REPORT

PAGE 2
glflxrpt

FROM 2018 01 TO 2018 12

ACCOUNTS FOR:
100 General Fund

	ORIGINAL APPROP	TRANFRS/ ADJSTMTS	REVISED BUDGET	ACTUALS	ENCUMBRANCES	AVAILABLE BUDGET	PCT USED
12401 532332 Mileage	200	0	200	.00	.00	200.00	.0%
12401 532335 Meals	200	0	200	36.67	.00	163.33	18.3%
12401 532336 Lodging	600	0	600	538.08	.00	61.92	89.7%
12401 533225 Telephone & Fax	500	0	500	109.47	.00	390.53	21.9%
12401 533236 Wireless Internet	1,850	0	1,850	1,898.15	.00	-48.15	102.6%
12401 535242 Maintain Machinery & Equip	1,200	0	1,200	2,076.55	.00	-876.55	173.0%
12401 535259 Tree Planter Service	100	0	100	.00	.00	100.00	.0%
12401 571004 IP Telephony Allocation	760	0	760	696.63	.00	63.37	91.7%
12401 571005 Duplicating Allocation	144	0	144	132.00	.00	12.00	91.7%
12401 571009 MIS PC Group Allocation	14,968	0	14,968	13,720.63	.00	1,247.37	91.7%
12401 571010 MIS Systems Grp Alloc(ISIS)	4,969	0	4,969	4,554.88	.00	414.12	91.7%
12401 591519 Other Insurance	2,389	0	2,389	2,774.21	.00	-385.21	116.1%
12402 Wildlife Crop Damage							
12402 421001 State Aid	-20,000	0	-20,000	-15,928.72	.00	-4,071.28	79.6%
12402 529299 Purchase Care & Services	20,000	0	20,000	15,928.72	.00	4,071.28	79.6%
12403 Nutrient Management							
12403 458012 Public Land Consrv Fees	-250	0	-250	-160.00	.00	-90.00	64.0%
12403 535349 Other Supplies	250	0	250	92.88	.00	157.12	37.2%
12404 Local Cost Share Program							
12404 421001 State Aid	-3,300	0	-3,300	.00	.00	-3,300.00	.0%
12404 521219 Other Professional Serv	3,000	0	3,000	2,000.00	.00	1,000.00	66.7%
12404 521219 24402 Other Professional Serv	0	0	0	1,950.69	.00	-1,950.69	.0%
12404 529299 Puchase Care & Services	300	0	300	.00	.00	300.00	.0%
12405 DATCP Cost Share							
12405 421003 State Aid GPR	-14,000	0	-14,000	-770.00	.00	-13,230.00	5.5%
12405 421004 State Aid Bonded	-35,000	0	-35,000	-42,111.03	.00	7,111.03	120.3%
12405 593701 Cost Share Payment	49,000	0	49,000	36,597.50	.00	12,402.50	74.7%
12406 Non-Metallic Mining							
12406 411100 General Property Taxes	10,995	0	10,995	10,995.00	.00	.00	100.0%

01/25/2019
13:47:15

Jefferson County
FLEXIBLE PERIOD REPORT

PAGE 3
glflxrpt

FROM 2018 01 TO 2018 12

ACCOUNTS FOR:
100 General Fund

	ORIGINAL APPROP	TRANFRS/ ADJSTMTS	REVISED BUDGET	ACTUALS	ENCUMBRANCES	AVAILABLE BUDGET	PCT USED
12406 432005 Non-Metallic Annual Fee	-9,445	0	-9,445	-4,190.00	.00	-5,255.00	44.4%
12406 474175 Highway Billed	-2,035	0	-2,035	-2,035.00	.00	.00	100.0%
12406 531311 Postage & Box Rent	60	0	60	32.60	.00	27.40	54.3%
12406 531312 Office Supplies	50	0	50	.00	.00	50.00	.0%
12406 531348 Educational Supplies	25	0	25	24.00	.00	1.00	96.0%
12406 532325 Registration	150	0	150	35.00	.00	115.00	23.3%
12406 532332 Mileage	50	0	50	.00	.00	50.00	.0%
12406 532335 Meals	50	0	50	.00	.00	50.00	.0%
12406 532336 Lodging	100	0	100	.00	.00	100.00	.0%
<hr/> 12407 Farmland Easement <hr/>							
12407 481001 Interest & Dividends	0	0	0	-3,264.58	.00	3,264.58	.0%
12407 531311 Postage & Box Rent	0	0	0	20.73	.00	-20.73	.0%
12407 531312 Office Supplies	0	0	0	125.00	.00	-125.00	.0%
12407 531313 Printing & Duplicating	0	0	0	11.00	.00	-11.00	.0%
12407 571005 Duplicating Allocation	76	0	76	69.63	.00	6.37	91.6%
12407 594950 Operating Reserve	0	32,253	32,253	.00	.00	32,253.20	.0%
12407 594960 Capital Reserve	92,805	0	92,805	.00	.00	92,805.00	.0%
12407 699800 Resv Applied Capital	-92,881	-32,253	-125,134	.00	.00	-125,134.20	.0%
<hr/> 12408 County Farm <hr/>							
12408 411100 General Property Taxes	103,688	0	103,688	103,688.04	.00	-.04	100.0%
12408 482003 County Farm Land Rent	-105,688	0	-105,688	-90,383.85	.00	-15,304.15	85.5%
12408 529170 Grounds Keeping Charges	1,000	0	1,000	1,397.35	.00	-397.35	139.7%
12408 535249 Sundry Repair	1,000	0	1,000	.00	.00	1,000.00	.0%

01/25/2019
13:47:16

Jefferson County
FLEXIBLE PERIOD REPORT

PAGE 4
glflxrpt

FROM 2018 01 TO 2018 12

	ORIGINAL APPROP	TRANFRS/ ADJSTMTS	REVISED BUDGET	ACTUALS	ENCUMBRANCES	AVAILABLE BUDGET	PCT USED
--	--------------------	----------------------	-------------------	---------	--------------	---------------------	-------------

GRAND TOTAL	0	0	0	21,977.16	.00	-21,977.16	.0%
-------------	---	---	---	-----------	-----	------------	-----

01/25/2019
 13:47:16

Jefferson County
 FLEXIBLE PERIOD REPORT

PAGE 5
 glflxrpt

REPORT OPTIONS

	Field #	Total	Page Break
Sequence 1	1	N	Y
Sequence 2	9	N	N
Sequence 3	0	N	N
Sequence 4	0	N	N

Report title:

FLEXIBLE PERIOD REPORT

Includes accounts exceeding 0% of budget.
 Print Full or Short description: F
 Print full GL account: N
 Sort by full GL account: N
 Print Revenues-Version headings: N
 Print revenue as credit: Y
 Print revenue budgets as zero: N

From Yr/Per: 2018/ 1
 To Yr/Per: 2018/12
 Budget Year: 2018
 Print totals only: N
 Format type: 1
 Double space: N
 Suppress zero bal accts: Y
 Amounts/totals exceed 999 million dollars: N
 Roll projects to object: N
 Print journal detail: N
 From Yr/Per: 2018/ 1
 To Yr/Per: 2018/12
 Include budget entries: Y
 Incl encumb/liq entries: Y
 Sort by JE # or PO #: J
 Detail format option: 1
 Multiyear view: D