

Jefferson County Comprehensive Plan and Agricultural Preservation & Land Use Plan



Local Jurisdiction Worksheet

Focus Group Members:

We need your help understanding the Local Jurisdiction Issues and Opportunities for shaping the future of Jefferson County.

Use this worksheet to review the Issues and Opportunities identified through the initial public engagement opportunities. The conversation starters identified within this worksheet will be used during the meeting, so think through these items, provide your notes, and be ready to share!

Please bring this sheet with you to the focus group meeting or send it to pchellevoid@srfconsulting.com if you are unable to attend!

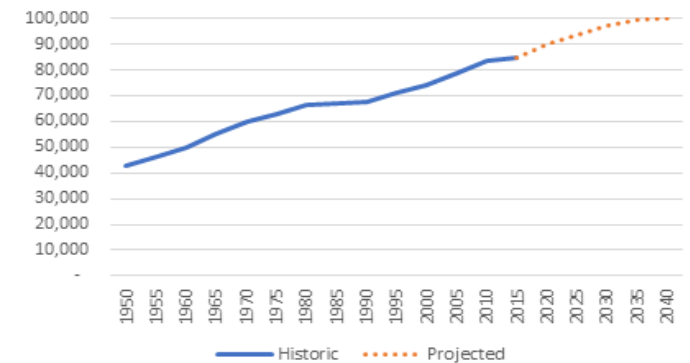
How can the County-municipality relationship be improved?

What services could the County provide to local municipalities to improve their effectiveness?

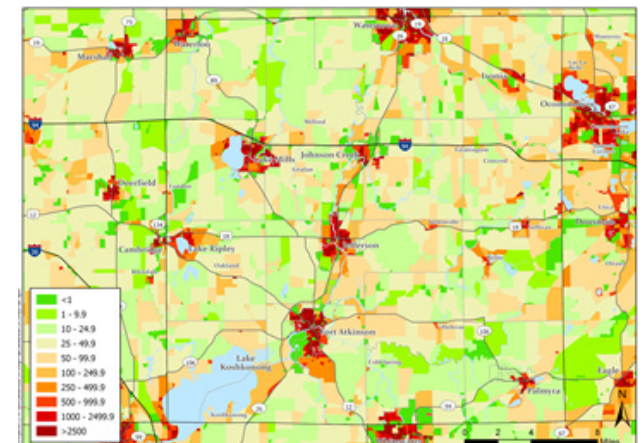
Initial Public Outreach Themes

- Working with communities and County staff on boundary agreements and urban service areas
- Working with Cities and Villages to meet housing needs
- Need to implement public transportation between communities
- Broadband cooperation and cost shares and creating public/private partnerships
- Joint marketing/branding tourism
- Consistency with growth and development support
- Collaboration on emergency services to address “volunteer services model”

County Population 1950 - 2040



Population Density



What housing needs are you struggling with as a jurisdiction? How can the County assist your housing efforts?

How should urban growth areas be established?

What transportation and mobility issues is your community facing? Is public transportation between jurisdictions an issue?

In reviewing initial outreach themes to date, are there any other themes that need to be considered in these plans?

Other thoughts?