

Jefferson County Land & Water Conservation Committee Agenda
"Working Together to Protect & Enhance the Environment"

Jefferson County Courthouse ~ 311 S Center Ave, Rm 202 ~ Jefferson, WI 53549-1701

Wednesday, May 18, 2022 @ 8:30 am

Join Zoom Meeting ~ <https://zoom.us/j/82992101270>
Meeting ID: 829 9210 1270# ~ Dial by your location: +1 312 626 6799

Committee Members: Margaret Burlingham (PACE), Walt Christensen, Matt Foelker (UW), Dan Herbst (UW), Kirsten Jurcek (FSA), Cassie Richardson, and Meg Turville-Heitz

1. Call to Order - Patricia Cicero
2. Roll Call (Establish a Quorum)
3. Certification of Compliance with the Open Meetings Law
4. Election of Officers
5. Set Future Meeting Schedule
6. Review of the May Agenda
7. Approval of the March 16, 2022 Meeting Minutes
8. Public Comment (members of the public who wish to address the Committee on specific agenda items must register their request at this time)
9. Communications
 - Department of Agriculture, Trade & Consumer Protection (DATCP) April & May 2022 Reports
10. Discussion on Natural Resources Conservation Service (NRCS) Report
11. Discussion on Land & Water Conservation Committee and Department Overview
12. Discussion on Departmental Updates
13. Discussion and Possible Action on Wisconsin Land+Water Conservation Association and Southern Area Association
14. Discussion and Possible Action on Nominating John Kannard for the Blue Spring Lake Management District and the Lower Spring Lake Protection and Rehabilitation District
15. Discussion on Producer-Led Groups: Jefferson County Soil Builders & Rock River Regenerative Grazers
16. Discussion and Possible Action on Resolution Amending the 2022 Land & Water Conservation Department Budget
17. Discussion and Possible Action on Notices of Noncompliance - Farmland Preservation Program (FPP)
18. Discussion and Possible Action on Cancellation of Notices of Noncompliance - FPP
19. Discussion and Possible Action on Purchase of Agriculture Conservation Easement (PACE) Applications & Baseline Documentation
20. Review of the Monthly Financial Report (March)
21. Discussion on Items for the Next Agenda
 - Next Scheduled Meeting June 22, 2022 @ 8:30 am in Room 202
22. Adjournment

A quorum of any Jefferson County Committee, Board, Commission, or other body, including the Jefferson County Board of Supervisors, may be present at this meeting.

Individuals requiring special accommodations for attendance at this meeting should contact the County Administrator 24 hours prior to the meeting at (920) 674-7101 so appropriate arrangements can be made.

Land & Water Conservation Committee Minutes

March 16, 2022

1. Call to Order:

The monthly meeting was called to order by Matt Foelker at 8:30 am. Committee members Matt Foelker (Chairperson), Walt Christensen (Vice-Chairperson), Dan Herbst (UWEX Member), John Kannard (UWEX Member), and Kirsten Jurcek (FSA Rep) were present. Also in attendance were Patricia Cicero, Director, Land & Water Conservation Department (LWCD); Kim Liakopoulos, LWCD; and Andy Berndt Natural Resource Conservation Service (NRCS). Mike Kelly (Secretary), and Margaret Burlingham (PACE Rep) were absent.

- Others in Attendance: Jeff Johns, Joan Callan (via Zoom), Dean Weichmann, Jefferson County Soil Builders, and Anita Martin (@ 8:37)

2. Roll Call (Establish a Quorum):

A quorum was established.

3. Certification of Compliance with the Open Meetings Law:

It was determined that the committee was in compliance with the Open Meetings Law.

4. Review of the March Agenda:

The March agenda was reviewed by the committee members. No changes were proposed.

5. Approval of the February 16, 2022 Meeting Minutes:

Kannard made a motion to approve the February 16, 2022 meeting minutes as written, Herbst seconded. Motion passed 5/0.

6. Public Comment:

There were no comments.

7. Communications:

- Department of Agriculture, Trade & Consumer Protection March 2022 Report.

8. Natural Resources Conservation Service (NRCS) Report:

Andy Berndt, the newly assigned Resource Conservationist to the Jefferson field office, introduced himself to the committee.

9. Discussion on Departmental Updates:

Gerry Kokkonen will be moving to the Land Information/Zoning office as Senior Geographic Information System (GIS) Specialist starting 3/28/22. Kokkonen will continue to work on some LWCD programs until a new LWCD position is determined. The trees are sold out for the 2022 planting season. LWCD staff have been working on a new Farmland Preservation Program (FPP) database. This is the last LWCC meeting before the election. An April meeting may be postponed until May to accommodate the new committee. Avian influenza has been found in Jefferson County. DATCP is

the state's point of contact for information, Jefferson County Emergency Management Department is the County's point of contact.

10. Discussion on Producer-Led Groups: Jefferson County Soil Builders (JCSB) & Rock River

Regenerative Grazers (R3G): JCSB has a field day 4/12/22. R3G has a field day 4/14/22. A JCSB field day flyer was handed out during the meeting and a flyer for R3G is going to be available shortly.

11. Discussion and Possible Action on Notices of Noncompliance - Farmland Preservation Program (FPP): There were no notices.

12. Discussion and Possible Action on Cancellation of Notices of Noncompliance - FPP:

Beatrice Peyer Trust

Kannard made a motion to accept the notice, Herbst seconded. Motion passed 5/0.

13. Discussion and Possible Action on Participation in the Fourth Grade Farm Tour:

The Fourth Grade Farm Tour is 5/4/22. Christensen has volunteered to attend the tour. Cicero will contact Burlingham who may have another volunteer.

14. Discussion and Possible Action on Purchase of Agriculture Conservation Easement (PACE)

Applications & Baseline Documentation: There are no new applications. The current application is being reviewed by NRCS. Kokkonen, Burlingham, and Cicero are crafting a ranking sheet for the American Farmland Trust/NRCS grant that was awarded this year for conservation easements.

15. Review of the Monthly Financial Report (January):

The most recent statement of revenues and expenditures was distributed. Cicero pointed out that the drainage board has been added to LWCD's financials. The drainage board is independent from the County, but some of their finances are paid by the County.

16. Discussion on Items for the Next Agenda:

Possible agenda items include:

- **Next Scheduled Meeting:** April 20, 2022 @ 8:30 in Room 202 - potentially in May due to elections and committee assignments.

17. Adjournment:

Kannard made a motion to adjourn at 9:10 am, Christensen seconded. Motion passed 5/0.

Committee member Kirsten Jurcek has been appointed to serve on this committee due to her status as the designated Farm Service Agency committee member. All her opinions and votes are as a member of the public and as a producer/farmer, not as a representative of the Farm Service Agency, United States Department of Agriculture, or Federal Government.

Kim Liakopoulos
Administrative Specialist I ~ LWCD



DATCP REPORT

Bureau of Land and Water Resources

April 2022

Soil and Water Resources Management Grants

- Extensions are expected to be recommended for approval at the LWCB meeting on 4/5/22. The amended allocation plan will be added to the website as soon as it is signed by the DNR and DATCP secretaries.
- For those of you who received 2022 NMFE funds, DATCP will be sending those contracts to you for signature in the next couple of weeks.

ATCP 50 Rule Revision: Upcoming Meetings

- We plan to schedule stakeholder meetings in April and May to discuss a range of topics. Topics to be covered may include implementation of the Silurian Bedrock targeted performance standard, considerations related to the soil and water resource management grant program, and eligible conservation practices. Please sign up on our [website](#) to receive GovDelivery notices of upcoming meeting dates and other rule related information.
- Presentation slides and meeting materials for past meetings are available on our [website](#). Questions and comments can be sent to DATCPlandwater@wisconsin.gov.

Land and Water Conservation Board-LWRM Plans

- The April 5th, 2022 meeting of the Land and Water Conservation Board (LWCB) will be conducted over Microsoft Teams. Jackson County will be presenting their LWRM plan revision for approval and Menominee County will be presenting their LWRM plan for a five-year review. To join the meeting remotely [click this link](#) or follow the instructions in the April meeting agenda which is available at lwcb.wi.gov.
- For updates on LWCB meetings and meeting links please subscribe to LWCB [govdelivery notices](#). Please contact Sara.Williams@wisconsin.gov for questions regarding joining via Microsoft Teams.
- Counties that are working through the LWRM plan revision process during COVID-19 restrictions may have questions and concerns about the requirements that need to be met for plan approval. Contact Lisa.Trumble@wisconsin.gov to discuss possible options to completing your plan revisions.

Farmland Preservation Program and Agricultural Enterprise Areas

- The 2022 Agricultural Enterprise Area Petition is OPEN! Communities who are interested in petitioning for a new AEA or increasing the size of an existing AEA can view the [petition materials on the website](#). Petitions will be accepted until July 29, 2022. Interested petitioners who would like additional information about the program or to schedule an informational meeting with FP staff can contact DATCPworkinglands@wisconsin.gov.
- The [2019-2021 Farmland Preservation Program Biennial Report](#) is now available.

Conservation Reserve Enhancement Program (CREP)

- Introducing, Stacy Tierman! Stacy comes from a billing and credentialing background in the healthcare industry. She is replacing Melissa Gilmore in the CREP program and will be processing CREP agreements, transfers, and cost-share and assistance with other Bureau programs. Please begin contacting Stacy for those things you used to go to Melissa for. Her email is stacy.tierman@wisconsin.gov and her phone number is 608-224-4633. When not at work, you can find her photographing horses, hiking with her dogs, or being outside in general! Stacy says, "I am thrilled to be here and can't wait to work with you!"
- It's now easier to get to the DATCP CREP website! Our new url is crep.wi.gov . Give it a try and be sure to tell landowners in your county interested in CREP.

Agricultural Impact Statement (AIS) Program

- The AIS program is currently drafting an AIS for a proposed electrical substation by the Wisconsin Power and Light Company in Walworth County, WI. The AIS program is actively reaching out to affected agricultural landowners and

consulting with impacted units of government regarding the project.

- The Public Service Commission of Wisconsin (PSC) has approved the following projects the AIS Program has participated in:
 - Northern State Power Company's Ashland-Ironwood Transmission Line Relocation Project in Ashland and Iron Counties (Docket [4220-CE-183](#)) on [March 3, 2022](#).
 - American Transmission Company's Howards Grove to Erdman Transmission Line Project in Sheboygan County (Docket [137-CE-195](#)) on [March 10, 2022](#).
- Contact zach.zopp@wisconsin.gov for questions regarding any active AIS statement or the AIS program.

DATCP Staff Updates

- Stacy Tierman has joined DATCP and has replaced Melissa Gilmore in the CREP program.
- For those of you who haven't heard yet, Lacey Cochart, Bureau Director for the Land and Water Resource Management Bureau recently left the department to pursue a new career opportunity in Green Bay. Recruitment for a new Director for the bureau will hopefully be underway shortly. Jennifer Heaton-Amrhein is the Acting Bureau Director through April 28, and Mark Witecha is the Acting Bureau Director from April 29-May 28.



DATCP REPORT
Bureau of Land and Water Resources
May 2022

Soil and Water Resources Management Grants

- Tip of the Month: As you are signing cost-share contracts and beginning work on 2022 projects, remember you may use up to 50% of your SEG allocation on cropping practices, without pre-approval, but a NM checklist is required at reimbursement.
- Counties should receive their 2022 SWRM Schedule of Awards in late May.

ATCP 48 Rule Revision

- The Bureau is moving forward with plans to revise ATCP 48. A scope statement has been prepared, and it is being reviewed internally. We hope to start collecting feedback later this year on potential revisions.

ATCP 50 Rule Revision

- Just a reminder to sign up on our [website](#) to receive GovDelivery notices of upcoming meeting dates and other rule related information.
- Presentation slides and meeting materials for past meetings are available on the [website](#). Questions, comments, and suggestions for changes can be sent to DATCPlandwater@wisconsin.gov.

Land and Water Conservation Board-LWRM Plans

- For updates on LWCB meetings and meeting links please subscribe to LWCB [govdelivery notices](#).

Farmland Preservation Program and Agricultural Enterprise Areas

- The 2022 Agricultural Enterprise Area Petition is OPEN! Communities who are interested in petitioning for a new AEA or increasing the size of an existing AEA can view the [petition materials on the website](#). Petitions will be accepted until July 29, 2022. Interested petitioners who would like additional information about the program or to schedule an informational meeting with FP staff can contact DATCPworkinglands@wisconsin.gov.

Conservation Reserve Enhancement Program (CREP)

- The CREP program has published a revised version of the CREP Easement Monitoring Form (Rev. 4/2022), which can be downloaded from the CREP website [at this link](#). County Land Conservation Departments (LCD's) should complete this form for each CREP permanent easement site they monitor to ensure monitoring consistency across counties. Completed forms should be sent, as pdf's, to datcpcrep@wisconsin.gov. Contact Zach Zopp zach.zopp@wisconsin.gov for questions regarding CREP easement monitoring.
- The CREP program is reaching out to county LCD's all summer to learn about their CREP easement monitoring plans and coordinate logistical support from DATCP. Contact Zach Zopp zach.zopp@wisconsin.gov for questions regarding CREP easement monitoring.

Soil and Watershed Management Section

- Outreach magnets and keychains are available upon request to help advertise the Runoff Risk Advisory Forecasting Tool. If you are interested, please email andrea.topper@wisconsin.gov requesting how many magnets and keychains you would like. Please make sure to include an address in your request so we can mail them to you!

DATCP Staff Updates

- Rachel Rushmann just accepted a new position with Extension as an Ag and Water Quality Specialist. Her last day with DATCP is May 20. We appreciate the effort and dedication she's shown in helping establish the Producer-Led

grant program in WI and wish her well in her new venture. We will move quickly to fill this position. In the meantime, questions on Producer-Led should be directly to Dana Christel or Susan Mockert.

- Shauna Minick has been hired as the Soil and Watershed Management Program Associate. Shauna will begin her new role on May 9.
- A copy of our Bureau's staff is attached to the report. As we fill vacant positions, we will send a new one.

Bureau of Land and Water Resources



Vacant (Cochart)
Land & Water Bureau
Director
(608) 224-4603



Alexandria Elias
Program & Policy
Analyst - Adv
(608) 224-6338



Coreen Fallat
Agency Liaison
(608) 224-4625



Matthew Woodrow
Conservation
Engineering Section
Manager
(920) 427-8505



Mark Witecha
Soil & Watershed
Management Section
Manager
(608) 224-4608



Jenni Heaton-Amrhein
Land Management
Section Manager
(608) 224-4634



Travis Buckley
Agricultural Eng.
Sr.
(920) 843-3598



Bart Chapman
Conservation
Engineering Unit
Leader
(608) 224-4608



Peter Wurzer
Env. Spec. Adv. 2
(715) 832-6547



Taylor Smagacz
Agricultural Eng.
Sr.
(608) 630-2133



Drew Zelle
Env. Spec. Adv. 2
(920) 858-1517



Ryan Glassmaker
Env. Spec. Adv.
(608) 301-6413



Dennis Marquardt,
Jr.
Agricultural Eng.
Sr.
(608) 381-4600



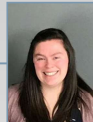
Kelli Neitzel
Env. Spec. Sr.
(608) 647-6931



Stacy Dehne
Agricultural Eng.
Adv.
(715) 492-5303



Justin White
Agricultural Eng.
Sr.
(608) 647-4353



Andrea Topper
Nutrient Mgmt.
Specialist
(608) 224-4604



Cody Calkins
Environ. Analysis &
Review Spec. Adv.
(608) 224-4604



Dana Christel
Environ. Analysis &
Review Spec.
(608) 224-4506



Rachel Rushmann
Environ. Analysis &
Review Spec. Adv.
(608) 590-7357



Vacant
Environ. Analysis &
Review Spec.
(608) 640-7270



Katy Smith
Planning &
Ordinance Unit Sup
608-224-4621



Lisa Trumble
Environ. Analysis &
Review Spec. Adv.
(608) 224-4617



Wednesday Jordan
Environ. Analysis &
Review Spec.
(608) 224-4611



Tim Jackson
Environ. Analysis &
Review Spec. Adv.
(608) 224-4630



Zach Zopp
Ag Impact
Statements, LWCB
(608) 224-4520



Brian Loeffelholz
Environ. Analysis &
Review Spec. Adv.
(608) 224-4632



Kim Carlson
Contracts
Specialist Adv.
(608) 224-4610



Susan Mockert
Contracts
Specialist, Adv.
(608) 224-4648



Stacy Tierman
Environ. Analysis &
Review Spec.
(608) 224-4633



Vacant
Environ. Analysis &
Review Spec.
(608) 224-xxxx

Jefferson County Land and Water Conservation Department Annual Report 2021

The purpose of the Land and Water Conservation Department (LWCD) is to provide for the conservation of soil and water resources of Jefferson County. The LWCD is charged with administering state statutes and county ordinances that conserve and protect our natural resources.

2021 Land and Water Conservation Committee Members

Matt Foelker (Chair), Walt Christensen (Vice-Chair), Mike Kelly (Secretary), Dan Herbst (UWEX Member), John Kannard (UWEX Member), Kirsten Jurcek (FSA Rep), and Margaret Burlingham (PACE Rep)

Land and Water Conservation Department Staff

Patricia Cicero (Director), Joe Strupp (Resource Conservationist), Josh Butteris (Resource Conservationist - started September 2021), Nancy Lannert (Resource Conservationist - retired August 2021), Marisa Ulman (Water Resources Management Specialist), Gerry Kokkonen (GIS & Land Use Specialist), and Kim Liakopoulos (Administrative Specialist)

Department Funding

- Department of Agriculture staff grant = \$151,690 in 2021, \$183,258 in 2022
- Department of Natural Resources Lake Monitoring & Protection Network staff grant = \$13,003 in 2021
- County Farm rental = \$100,427 in 2021
- Department of Agriculture funding = \$33,750 in 2021 and \$35,000 in 2022 to assist landowners with conservation practice installation; \$12,000 in 2021 and 2022 to assist landowners with nutrient management plan development
- Multi-Discharger Variance Program funding for the new cover crop and pasture establishment program = \$11,129 in 2020, \$20,777 in 2021, and \$67,359 in 2022
- Farmland Preservation Program fees = \$16,070 in 2021
- Tree Program = \$7,981 in 2021
- Non-Metallic Mining Reclamation = \$12,815 in 2021 annual permitting fees; \$900 in new reclamation plan review fees
- Various permits and fees = \$1,195 in 2021

Land and Water Resources Management Plan

This plan is required by the Department Agricultural, Trade and Consumer Protection for the LWCD to be eligible to receive staffing grants and conservation practice funding. Updated in 2021, the plan lays out the mission, goals, and work plan for the LWCD. The following conservation practices have been installed with the funding during the last 3 years.

- 2019 projects: 2 manure storage closures, 1 well closure
- 2020 projects: 1 grassed waterway (563 ft), 2 manure storage closures, 1 well closure, and 1 shoreline stabilization (70 ft)
- 2021 projects: 1 nutrient management plan (163 acres)

Cover Crop and Pasture Establishment Cost-Share Program

New in 2021, the LWCD created a cover crop and pasture establishment cost-share program that is funded by the Multi-Discharger Variance Program (MDV). A total of 318.1 acres of cover crops were planted in 2021 with the MDV funds and a donation from a citizen.

Farmland Preservation Program

The Wisconsin Farmland Preservation Program (FPP) offers farm owners a tax credit for protecting soil and water resources. Landowners receive credit on their Wisconsin income taxes in exchange for compliance with the state conservation standards. LWCD works with landowners and producers to ensure they meet the requirements of the program. The tax credit is calculated as a flat, per acre rate. In Jefferson County, most landowners receive \$7.50 per acre. Landowners located in an Agricultural Enterprise Area (AEA) can sign a 15-year agreement with the state and receive \$10.00 per acre. An AEA is created when landowners join to petition the state to create an area dedicated to long term agricultural use. Jefferson County has one AEA located in parts of Palmyra and Sullivan Townships.

- 598 total FPP participants covering a total of 119,989 acres
- 6 AEA agreements covering 802.48 acres
- \$901,925 total tax relief
- Maintained and further developed FPP landowner database with nearly 3,600 parcels
- Maintained and enhanced tools to generate required Certificates of Compliance

Agricultural Performance Standards

State law (NR 151) identifies minimum standards that agricultural producers must follow. These rules regulate manure management and require soil conservation and nutrient management plans. LWCD works with producers to help them achieve compliance with the laws.

- Received nutrient management plan checklists for 1,073 landowners covering 112,942 acres
- Maintained and updated approximately 5,600 parcel records to track compliance

Nutrient Management and Farmer Education Classes

State law (NR151.07) and the Farmland Preservation Program require that all cropland where nutrients are applied be covered by a nutrient management plan. These plans must be updated each year to account for crop rotation and changes in fertilization. LWCD offers classes to teach farmers how to write and update their plans.

- 2 classes, 6 pupils (less than normal due to Covid-19)

Livestock Siting

Under state law (ATCP 51) and the Jefferson County Zoning Ordinance, livestock producers who expand their animal numbers over 150 animal units must complete an application and worksheets. LWCD ensures these materials are complete and meet state standards before the farms can apply for a conditional use permit through the Zoning Department. There is an amendment process when changes are made but livestock numbers stay under the permitted levels.

- 25 farms in Jefferson County have livestock siting conditional use permits
- In 2021, 2 farms obtained amendments to their permit

Transect Survey

The transect survey involves collecting cropping, and tillage systems data at over 786 observation points. 2021 data and calculations from the points include the following:

- Crops: 47% corn, 25% soybeans, 16% hay/alfalfa, 6% small grains (wheat, oat, etc.), and 4% fallow
- Tillage: 48% chisel/disc system, <25% no-till, 22% reduced tillage (chisel with no disc)
- Residue levels on cropped acres: 43% had ≥50% residue, 35% has <30% residue
- Tolerable soil loss: 70% of cropped acres were at or below tolerable soil loss

Tree Program

LWCD administers an annual tree and shrub sale for citizens, and tree planter and sprayer rental.

- 2020/2021 sale offered 8 species with 4,800 trees/shrubs sold
- 2021/2022 sale offered 9 species with 5,700 trees/shrubs sold

Geographic Information Systems

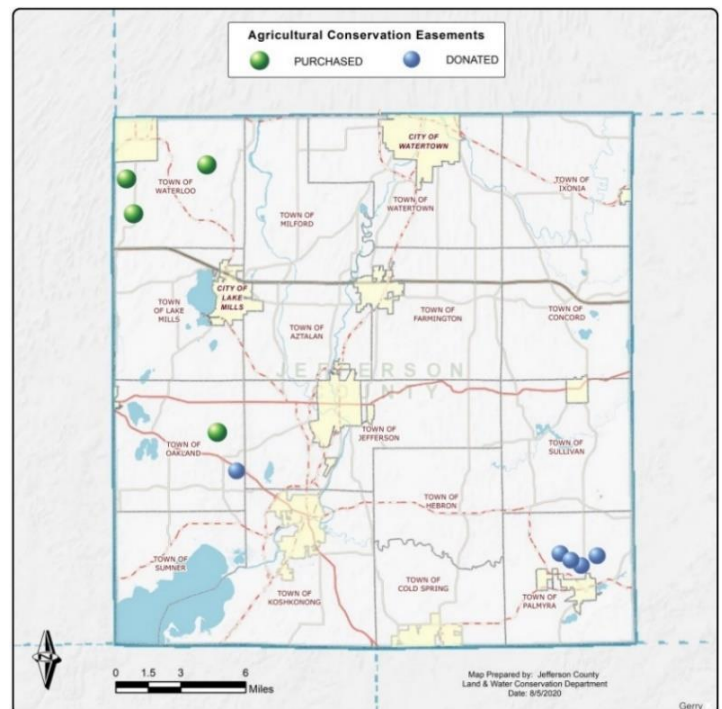
LWCD provides customized mapping and geo-analytical services for both internal and external customers and partners.

- Collaborated with the Land Information Department on modernizing land records and associated data sets.
- Maintained and updated various data sets for both the Parks and Zoning Departments.
- Assisted with updating Drainage District landowner listings and boundary mapping.
- Published and updated county internet map services and server for mapping applications.
- Maintained and enhanced field mapping tools for both the Parks and Zoning Departments.
- Utilized GPS and drone equipment for localized field mapping projects.

Agricultural Conservation Easement Program

Assist landowners with the process and documentation of conservation easement applications to protect agricultural land from development. Work includes securing grant funding, completing land transactions, and annual monitoring and reporting.

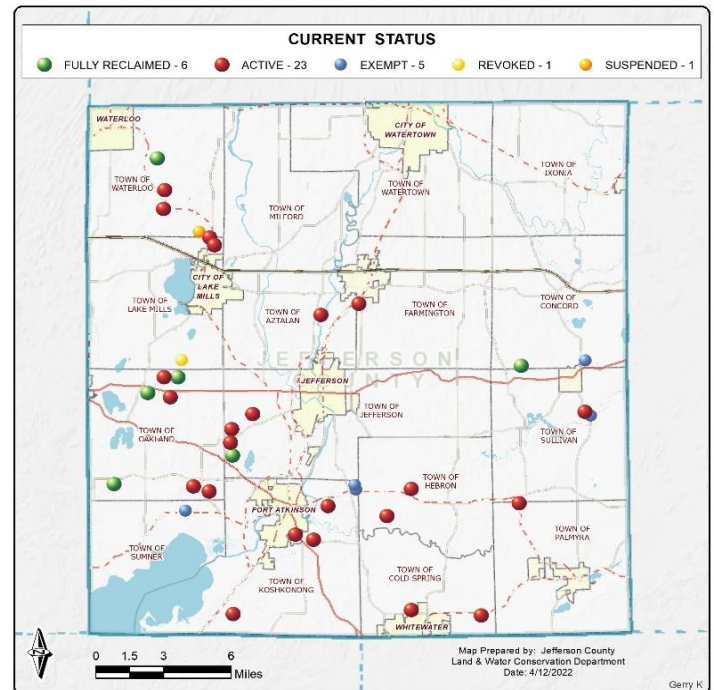
- Since the beginning of the program: 5 donated easements and 4 purchased easements totaling over 1,000 acres on 34 tax parcels
- Each easement property is inspected annually
- Provided mapping for applications and monitoring requirements
- NRCS grant funding secured for one future acquisition in 2022
- A partnership with American Farmland Trust successfully resulted in NRCS funds for future acquisitions in the next 5 years



Non-Metallic Mining Reclamation Permitting

According to state law (NR 135) and the Jefferson County Ordinance, non-metallic mines must have a permit to extract materials and ensure subsequent reclamation of mined land. LWCD ensures that the mines and the reclamation plans meet standards.

- Inspected 33 sites including 23 active, 3 reclaimed, 2 with revoked permits, and 5 with permit exemptions
- Maintained and updated data related to non-metallic mining permits
- Reviewed and held three public hearings: one for a new permit, one to amend a permit, and one for a plan modification



Water Resource Planning and Protection

The LWCD plans and implements projects in partnership with local resource organizations and municipalities to protect and improve water resources including collecting data, educating the public, developing management plans, and implementing conservation practices.

- 17 shoreland visits to provide expert advice and assistance on Blue Spring Lake, Lake Koshkonong, Lake Ripley, Rock Lake, and the Rock River
- Produced maps with various data for water resource groups
- Reviewed shoreland restoration plans for the Zoning Department, including creating a rain garden implementation plan required as mitigation for a shoreline disturbance
- Provided expertise on shoreline restoration projects including Rock River Landing and another project on the Rock River that involves multiple state and local partners

Surface Water Quality Monitoring

Staff trains, equips, and supports citizens who monitor lakes and streams. Results are tracked and shared with partners and citizens. In 2021, the following was accomplished:

- 4 stream sampling and 1 lake sampling training events
- 6 lakes were monitored
- 17 stream sites were monitored

Invasive Species Management

For 2021, Jefferson County received a DNR grant to fund additional invasive species work. This has enabled staff to expand the breadth and diversity of invasive species management and control.

- Worked collaboratively with Highway Department to inform them about best management practices, control techniques, and decontamination protocols relating to invasive species
- Established relationship with the City of Lake Mills to work on an initial invasive species action plan

and to assist in managing existing invasive species populations

- Identified 2 new populations of a DNR regulated prohibited species in the county and 10 additional locations of DNR regulated restricted species
- Implemented programs to educate the public on preventing aquatic invasive species, including assisting the Town and City of Lake Mills with Clean Boats, Clean Waters Program grants
- Worked on an early detection and response grant to manage a pioneering Phragmites population
- Partnered with UW-EX to monitor and collect beetles at a rearing site to use for controlling purple loosestrife populations
- Produced press releases and social media posts relating to local invasive species education.
- Participated in statewide education events and meetings as the county's aquatic invasive species coordinator

Other Programs and Projects

- Worked on the Conservation Reserve Enhancement Program, in partnership with the federal Farm Service Agency and the Wisconsin Department of Agriculture, to assist landowners with implementing stream buffers, grassed waterways, and wetland restorations.
- Established a partnership with the Jefferson County Soil Builders to be their collaborator and fiscal agent for grants. Assisted the group with the application of a Wisconsin Department of Agriculture grant.
- Provided expertise on land and water issues associated with the solar farms and the liquid natural gas plant.
- Implemented drone technology to assist with projects including field monitoring and mapping, preconstruction planning, and administration of regulations.
- Developed, customized, and maintained applications for data tracking of LWCD programs. This enables us to do required reporting to state departments.
- Served as a pass-through for funds in both the Wildlife Damage Abatement Program (reimburses farmers for crop loss) and the Deer and Turkey Donation Program (meat supplied to food pantries).
- Attended Jefferson County Drainage Board meetings and assistance them with mapping, waterway questions, and communications with Jefferson County departments.

Jefferson County Land and Water Conservation Department
311 S Center Ave, Room 113
Jefferson, WI 53549-1701
(920) 674-7110

**Jefferson County
Land & Water Resources Management Plan
2021 - 2030**

Prepared by:
Jefferson County Land & Water Conservation Department

Land and Water Resources Management Plan – Advisory Committee

Jim Amrhein, Stream Biologist, WI Department of Natural Resources
Cody Calkins, Soil Conservationist, USDA Natural Resources Conservation Service
Dale Gasser, Water Resources Management Specialist, Department of Natural Resources
LaVern Georgson, Agricultural Educator, University of Wisconsin Extension
Susan Graham, Lakes Biologist, Department of Natural Resources
Carl Hahn, Nutrient Management Specialist, Insight FS
Larry Holzhueter, Crop Producer, Waterloo Area
Kirsten Jurcek, Resource Conservationist, Glacierland RC&D
Sam Jonas, Wildlife Biologist, WI Department of Natural Resources
Linda Plennes, District Chair, Lower Spring Lake Protection and Rehabilitation District
Gary Punzel, Financial Officer, Compeer Financial
Michelle Scarpace, Natural Resource Educator, University of Wisconsin Extension
Scott Schneider, Owner, Nature Link Farm
Debra Schut, County Executive Director, Jefferson USDA Farm Service Agency
Jay Settersten, President, SetterTech, LLC
Lisa Trumble, Land & Water Resource Management Plan Reviewer, Department of Agriculture,
Trade and Consumer Protection
Kathy Turner, District Conservationist, Natural Resources Conservation Service
Bob Volenec, Citizen Lake and Stream Monitor, and Board Member of Joint Rock Lake
Committee
Kevin Wiesmann, Parks Supervisor, Jefferson County Parks Department
Matt Zangl, Director, Jefferson County Planning and Zoning

Land & Water Conservation Department Staff

Patricia Cicero, Director
Gerry Kokkonen, GIS & Land Use Specialist
Nancy Lannert, Resource Conservationist
Kim Liakopoulos, Administrative Specialist
Joe Strupp, Resource Conservationist

Land & Water Conservation Committee Members

Matt Foelker, Chair
Walt Christensen, Vice-Chair
Mike Kelly, Secretary
Dan Herbst, UWEX Member
John Kannard, UWEX Member
JoAnn Davis, FSA Rep
Margaret Burlingham, PACE Rep

Table of Contents

Plan Summary	4
2016-2020 Accomplishments	7
Plan Development Process and Public Participation	11
Jefferson County Land & Water Resources	12
Topography, 12	
Land Uses, 12	
Soil Resources and Agriculture, 13	
Combating Erosion, 14	
Farmland Preservation Program and Conservation, 14	
Agricultural Enterprise Areas, 16	
Livestock, 16	
Wildlife Resources, 17	
Natural Areas, 17	
Environmental Corridors, 18	
Surface Water Resources, 18	
Exceptional Resource Waters, 18	
Impaired Surface Waters and the Rock River Recovery, 18	
Streams and Rivers, 21	
Lakes, 24	
Wetland Resources, 30	
Groundwater Resources, 30	
Goals, Objectives, Activities	31
Work Plan, 32	
Work Plan Implementation	40
Farmland Preservation Program, 42	
Priority Farm Strategy, 43	
Implementation Strategy for NR 151, 44	
Information and Education Strategy	48
Monitoring and Evaluation	49
Partners in Management	51

Charts

1. Survey of Livestock and Locations, 17

Tables

1. Cost-Sharing Program Accomplishments, 10
2. Land Uses (2018 Land Use Inventory), 12
3. Farms in Jefferson County (2017 USDA Census of Agriculture), 13
4. Farmland Preservation Program Participation, 16
5. 2018 Impaired Waters, 19
6. Rock River Recovery Reaches and Associated Phosphorus Baseline Losses and Reduction Targets, 20
7. Characteristics of Streams, 21
8. Characteristics of Lakes, 24

Appendix A – NR 151 Compliance Checklist, 53

Appendix B – Cost-Share Practices, 56

Maps

1. Topography, 59
2. Land Use Inventory – 2018, 60
3. Prime Soil Classifications, 61
4. Farmland Preservation Program Compliance, 62
5. Environmental Corridors, 63
6. River Watersheds, 64
7. Regional Lake Watersheds, 65
8. Lake Watersheds, 66
9. Water Resources, 67
10. Impaired and Exceptional Waters, 68
11. Rock River Sub-Basins, 69
12. Wetlands, 70
13. Agricultural Easements (PACE), 71
14. Nonmetallic Mining Reclamation Permits, 72
15. Cost-Shared Projects, 2010 – 2020, 73

Plan Summary

The Jefferson County Land and Water Resource Management Plan for 2021-2030 is an update of the 2011-2020 plan. Based on an assessment of the land and water resources in the county, this report sets forth a strategic work plan for achieving goals toward protection and enhancement of those resources. The overall goal of the Land and Water Resources Management Plan is:

The overall goal of this plan is to restore, improve, and protect land and water resources in Jefferson County because families and individuals deserve to have productive farmland, healthy natural areas, and clean water to use and enjoy.

The Land and Water Conservation Department (LWCD) will implement the work plan through various federal, state, and local programs and funding mechanisms. It is important to note that the implementation of the work plan is dependent on receiving adequate financial resources to cover staff and the various cost-sharing programs.

The plan first details the many accomplishments from 2015-2020. Of particular note are numerous practices implemented in the last 5 years with a total of \$100,084.68 in state funds. These practices controlled soil erosion, protected water quality, and enhanced wildlife habitat.

The plan development process and the involvement of the public and a variety of partners is detailed in the plan. An Advisory Committee was assembled to consider the resource issues and develop a work plan. Members of the Committee either attended the meeting held in September 2020 or submitted their written comments and suggestions to the LWCD. The Department of Agriculture, Trade, and Consumer Protection, the Department of Natural Resources, and the Farm Service Agency were all solicited for their input. The public was invited to become involved in the review of the plan through a public hearing held on December 1, 2020. A Class I Public Notice appeared in the Daily Jefferson County Union and a press release was sent to the newspapers in the county to inform the public about the hearing and the availability of the plan for review.

Information is detailed on the land and water resources in Jefferson County. Jefferson County has approximately half of its land area in agriculture, at the same time, rural development issues are increasing due to the development pressures that exist from being situated between the Madison and Milwaukee metropolitan areas. Surface water and wetland resources cover almost 20% of Jefferson County, making conservation practice implementation critical in both agricultural and developed areas. The most current data on the resources is presented in the plan as well as some of the projects and partners involved in ongoing management activities.

The goals, objectives, and actions of the work plan are contained in a table that details timing, estimated staff resources, and estimated cost share resources. Items in bold in this work plan are priorities for the Land and Water Conservation Department. These priority activities are listed below:

- Implement the NR151 Agricultural Performance Standard to Protect County Resources.
 - Provide technical assistance and cost-sharing so that farms attain compliance with the NR 151 Agricultural Performance Standards.
 - Educate landowners about NR 151 rules.
- Implement the Farmland Preservation Program to protect county resources.
- Ensure that livestock facilities expand according to standards that protect County resources.
- Reduce sediment and phosphorus delivery in the Rock River Basin to help implement the Rock River Recovery Plan and restore nutrient or sediment impaired waters.
- Protect surface water resources and habitat quality by implementing best practices.
 - Provide landowners with technical assistance and cost-sharing on Healthy Lakes and River projects (shoreland gardens, rain gardens, water diversions, rock infiltration and fish sticks) and erosion control projects.
- Provide cost-sharing for the closure of wells.
- Ensure decision-makers and citizens have resource information and tools necessary to achieve protection of lakes, rivers, and wetlands.
- Implement the County's Purchase of Agricultural Conservation Easements program.
- Ensure that non-metallic mines are reclaimed according to state standards.
- Document the potential reduction in soil erosion on cropland.
- Document the location and trends of livestock in the county.
- Track compliance with the Farmland Preservation Program and NR 151 rules.
- Determine progress in maintaining and improving the quality of lakes, rivers, and wetlands.
- Support the development of a producer-led council and partner with them to support soil health education.

The Land and Water Resource Management Plan contains information on implementation, laws and ordinances involved in management, and the goals, objectives, and actions of the work plan. Components of the plan will be implemented in accordance with various state and county ordinances and regulations including: the county's Animal Waste Storage and Nutrient Management as well as Livestock Siting (ATCP 51) Ordinances, the county's Nonmetallic Mining Reclamation Ordinance, the county's Shoreland Zoning Ordinance, and the state's Runoff Management Administrative Code (NR 151).

A Priority Farm Strategy is used to implement the performance standards and prohibitions in State Administrative Code NR 151 in a priority driven manner. The Priority Farms include the following: farms receiving a DNR notice of discharge or notice of intent, farms identified as having significant manure management problems, farms that have cropland erosion in excess of tolerable soil loss, farms located with a watershed with a nine key element plan (when developed), and farms with land in a water quality management area that also have livestock, farms within a water quality management area of an impaired water that is impaired due to sediment or nutrients.

The strategy for implementing the Farmland Preservation Program Working is included in the plan.

An implementation strategy for NR 151 is included in the plan. This strategy includes the following items:

- Implementing information and education activities to educate landowners.
- Determining compliance including a records inventory and onsite evaluations.
- Developing a compliance report to be sent to each landowner that will report their status of compliance. If they are noncompliant, then it will further explain the necessary steps to attain compliance.
- Working with landowners who voluntarily take steps to achieve compliance.
- Issuing a notification to landowners who do not take steps to achieve compliance. This notification will explain the process to attain compliance and the possible consequences of failing to comply.
- Assisting farms with attaining compliance through technical assistance, best management practices, and cost-sharing.
- Implementing any necessary enforcement actions.
- Monitoring farms to verify ongoing compliance.
- Developing an annual report of activities relating to the implementation of NR 151, and sharing reports with DNR and DATCP.

Monitoring and evaluation is an integral component to the success of the Land and Water Plan and its goals. It will be an ongoing process that is implemented in a variety of ways. Throughout this process, necessary adjustments will be made to how actions in the work plan are implemented to ensure achievability of the goals. Monitoring and evaluation of the land and water resources in the county will be achieved through the following: compliance tracking for NR 151 (via a database and GIS), conservation practice implementation, Farmland Preservation Program farm checks, implementation of Livestock Siting, livestock inventory, manure complaint investigations, nonmetallic mine tracking, nutrient management plan implementation, transect survey, and water quality monitoring in lakes and streams.

Monitoring and evaluation of the administrative side of the Jefferson County LWCD will be achieved through the following: evaluating and refining administration of programs and financial and staff resources; reviewing and refining administration of cost-share programs; coordination of activities between LWCD, Farm Service Agency, and the Natural Resources Conservation Service; annual financial audit of grant revenues and expenditures; and periodic LWCD staff meetings.

2016-2020 Accomplishments

Goal #1: Improve and protect soil, surface water, and groundwater quality through the implementation of the Working Lands Initiative and the Agricultural Performance Standards.

Farmland Preservation

- On-farm compliance checks are completed for each participant once every four years. The County has been divided up into four quadrants. Field checks are rotated between different quadrants each year.
- FPP participants are required to have a nutrient management plans in place prior to June 30th of each year.
- FPP participants are required to meet all livestock and cropland performance standards.
- As of December 2016, all FPP participants received Certificates of Compliance. New Certificates are issued as needed (such as when land is purchased or sold).
- As of November 2020, there are 619 participants and 106,426 acres enrolled in FPP. Additionally there are six farms that have signed Agricultural Enterprise Area contracts with the State covering 756 acres.

Agricultural Performance Standards

- Agriculture performance standards have been met on farms through technical assistance, cost-sharing, the Farmland Preservation Program, the Animal Waste Storage and Nutrient Management Ordinance, and the Livestock Siting provisions for expanding livestock operations. Please see Table 1 for the achievements of the cost-share program. Map 15 displays the location of the practices cost-shared from 2010 to 2020.
- As of October 2020, there are 137,737 acres of farmland that have nutrient management plans.
- Since December 2010, staff conducted 10 classes for farmers/landowners to learn how to write their own nutrient management plan. In total, 82 people have been trained. In addition 32 classes have been held for those who want/need assistance with updating their plans.
- Updated the Animal Waste Storage and Nutrient Management Ordinance in 2014 to be in line with some of the requirements contained in ATCP 51 Livestock Facility Siting.

Goal #2: Protect and enhance surface water, ground water, and wetland quality, and associated habitat areas.

Livestock Siting

- Livestock facilities have expanded according to standards that protect resources. Staff have reviewed 6 permit applications for livestock expansions and 15 amendments to the worksheets that did not include livestock expansions.

Rock River Recovery

- LWCD staff provided advice and resources to the City of Oconomowoc who is working to implement an adaptive management program to reduce phosphorus delivery to the Oconomowoc River.
- The LWCD received funding from the Multi-Discharger Variance Program in 2020 and will be working on a plan to use that money to make offers of cost share to reduce phosphorus sources and meet NR 151 agricultural performance standards.

Water Resource Protection through Conservation Programs

- Protected surface water resources and habitat quality through implementation of the Conservation Reserve Enhancement Program. 32 stream buffer projects were implemented.
- 2 native gardens (each 350 ft²), 1 rain garden, and 2 fish stick projects were implemented through the Healthy Lakes Program
- 1 streambank protection project (185 feet) was implemented through State cost-sharing. Staff provided technical assistance to numerous landowners on shoreline and streambank erosion control projects.
- 4 well closures have been implemented through cost-sharing.
- Train, equip, and support watercraft inspectors to educate boaters about aquatic invasive species laws via the Clean Boats, Clean Waters Program.

Water Resource Technical Expertise

- Completed the following plans/reports: Rock Lake Management Plan; Rock Lake Shoreland and Shallows Survey report.
- LWCD staff provides data, data analysis, maps, educational resources, and technical assistance to municipalities, citizens, water resource groups, and other County Departments.
- Expertise is provided on a wide range of topics including water quality monitoring and data analysis, shoreland habitat protection, shoreland zoning, DNR waterway permits, wetland disturbance and restoration, construction site erosion control and ordinances, aquatic plant monitoring and data analysis, and groundwater protection.

Goal #3: Preserve and protect natural areas, woodlands, open space, and farmland for the benefit of Jefferson County citizens and visitors.

Jefferson County's Purchase of Agricultural Conservation Easement Program (PACE)

- The County's PACE program was moved to be under the management of the Jefferson County LWCD (from the Zoning Department) in 2014.
- 5 permanent easements agreements have been issued covering 633 acres, and are monitored for compliance annually.
- Continue to pursue grant funding to allow additional purchases and agreements.
- Working budget of approximately \$232,000 of County funds.
- See Map 13 Agricultural Easements (PACE), for locations

Tree Seedling Program

- From 2016-2020, 28,305 trees and shrubs were sold to the public via the annual sale.
- LWCD helped distribute free trees to the public through Living Lands & Waters Million Trees Project.

Nonmetallic Mines

- Ensured that mines have reclamation plans that meet standards and adequate financial assurance to allow for reclaiming all disturbed acreage.
- Currently there are 23 active permits covering 550 acres, of which 420 acres will require reclaiming.
- Since 2015, approximately 75 acres have been reclaimed, while operators are encouraged to practice contemporaneous reclamation.
- See Map 14 Non-metallic Mine Permits – 2020, for locations

Goal #4: Monitor and assess the state of soil, water, and natural resources.

Transect Survey

- Perform annual survey each June to document cropland conditions including residue and erosion at over 900 farm field locations. There are nearly 20 years of data compiled by Jefferson County.
- Agricultural Performance Standards concerns are identified and solutions are pursued.

Quality of Water Resources

- Performed the following surveys/monitoring: annual aquatic plant surveys on Lower Spring Lake; shoreland and shallows survey of Rock Lake, monthly (in the summer) water quality sampling on Rock Lake.
- Train, equip, and support citizen lake monitors. In 2019 (pre-covid) there were 6 lakes monitored by volunteers. Data is tracked and analyzed.
- Train, equip, and support citizen stream monitors with assistance from the Rock River Coalition. In 2019 (pre-covid) there were 15 sites on 11 streams in the County that were monitored.

Goal #5: Educate and inform the public regarding Jefferson County resources and LWCD services.

Educational Efforts

- Staff presented at a number of events (the majority of which staff assisted in organizing): Shoreland and Rain Garden Tour, Native Plant Gardening Workshop, Lake Lot 101 Workshop, Lake Ripley pontoon classroom, Rock Lake pontoon educational tour, Jefferson County Board of Realtors presentation on shoreland issues, and water drawdowns on Lower Spring Lake to reduce the presence of Eurasian water milfoil.
- LWCD staff attended numerous meetings of citizen organizations to update them on resource issues.

- Several press releases are issued each year regarding LWCD programs and projects which have resulted in articles in area newspapers and radio interviews.
- Staff also interact with the public and provide information via one-on-one conversations, e-mail, LWCD website, and direct mail.

Table 1. Cost-Sharing Program Accomplishments (see Map 15 for locations).

Year	SEG \$ Cost Shared	BOND \$ Cost Shared	Best Management Practices Installed
2016	\$2,668	\$18,495.08	78 Acres Nutrient Management Plans 1 Barnyard Runoff System 1 Well Closure 1 Underground Outlet 1 Roof Runoff System
2017	\$770	\$23,187.50	27.5 Acres Nutrient Management Plans 2 Well Closures 1,236 Feet Grassed Waterway 687 Feet Clean Water Diversion
2018	0	\$26,273.90	185 Feet Streambank Protection 540 Feet Clean Water Diversion
2019	0	\$25,250	1 Well Closure 2 Manure Storage Closures
2020	0	\$6,878.20 so far	1 Manure Storage Closure Planned: grassed waterway, manure storage closure, well closure, shoreland stabilization
Totals	\$3,438	\$100,084.68	105.5 Acres Nutrient Management Plans 1 Barnyard Runoff System 4 Well Closure 1 Underground Outlet 1 Roof Runoff System 1,236 Feet Grassed Waterway 1,227 Feet Clean Water Diversion 185 Feet Streambank Protection 3 Manure Storage Closures

Plan Development Process and Public Participation

In 2020, the Jefferson County Land and Water Conservation Department (LWCD) worked on the update of the Land and Water Resource Management Plan. The following steps were taken:

The 2016-2020 work plan was reviewed to determine accomplishments, continued needs, and activities that were implemented by other entities. This review was helpful in setting future goals, objectives and action items for the 2021-2030 plan.

An Advisory Committee met on September 9, 2020. The group gave their input on the 2021-2030 work plan. Please see a list of Advisory Committee members on page 1.

The Department of Agriculture, Trade and Consumer Protection and the Department of Natural Resources were given a copy of the revised work plan for comment.

A first draft of the full Land and Water Resources Management Plan was provided to DATCP, DNR, and the Advisory Committee in November 2020. Comments received from them were incorporated into the plan.

A public hearing on the final draft Land and Water Resource Management Plan was held on Tuesday, December 1, 2020 in the Jefferson County Courthouse. The meeting was also available via the use of video-conferencing. A Class I Public Notice on the hearing was printed by the Daily Jefferson County Union. In addition, a press release was sent to newspapers in the county to inform people about the plan, public hearing, and the availability of the plan for review.

Input received from the public, Advisory Committee, DATCP, DNR, and the Land and Water Conservation Committee were incorporated into the final plan. The State Land and Water Board will consider the Jefferson County Land and Water Resources Management Plan at their February 2, 2021 meeting. The Jefferson County Board of Supervisors will consider adoption of the Land and Water Resources Management Plan at their February 9, 2021 meeting.

Jefferson County Land & Water Resources

Jefferson County is located in south central Wisconsin. With a total of approximately 373,000 acres of land, the county consists of many land and water resources including agricultural land, natural areas, parks, rivers, lakes, and wetlands. Situated between the Madison and Milwaukee metropolitan areas, there are concerns over the increasing development pressures on Jefferson County and its resources. The population of Jefferson County for 2019 was estimated to be 84,769 by the U.S. Census Bureau.

Topography

The topography of Jefferson County is characteristic of a glaciated region. A conspicuous result of the glaciations is the large number of drumlins that occur throughout the region north of the Bark River and east of the Rock River. The drumlins in this area form a series of parallel ridges running in a general north-south direction. Throughout this region the intervening low areas consist of peat marshes. In general, the drumlins lying south of the Bark River and west of the Rock River are higher with more irregular outlines; and the intervening land usually consists of uplands.

Another pronounced topographic feature is the Kettle Moraine, which crosses the southeastern corner of the county. It covers approximately six square miles and attains the highest elevation in the county of 1,061 feet (see Map 1 - Topography).

Land Uses

The different land uses in Jefferson County are detailed in Table 2 (see Map 2 for locations).

Table 2: Land Uses (2018 Land Use Inventory)

Land Use	Acres	% of Total Acres
Agriculture (cropland, orchards, tree nurseries, etc.)	188,757	50.6%
Wetlands (designated by DNR)	55,518	14.9%
Urban and Roadway Corridors (developed urban land and all road right of ways)	36,330	9.7%
Rural Developed (rural homesteads, farm buildings, churches, cemeteries, government facilities, etc.)	23,997	6.4%
Rural Open (rural uncultivated, vacant lots 5 or more acres, landfills)	23,453	6.3%
Upland Woods (wooded areas in both rural and urban areas, not in wetlands)	19,832	5.3%
Surface Water	17,440	4.7%
Recreation (public parks, golf courses, gun clubs, and non-public campgrounds)	6,502	1.7%

Land Use	Acres	% of Total Acres
Commercial and Industrial (retail shops, manufacturing, machine shops, rail right of ways, communication facilities, utilities, etc.)	1,137	0.3%
Totals	372,964	100%

Soil Resources and Agriculture

Jefferson County lies on the northern edge of the Corn Belt. Most of the soils are derived from parent material that was influenced by the glacier. The most common parent materials are loess, glacial till and outwash material, and lacustrine deposits. Characteristics of each soil type located in the county can be found in Soil Survey of Jefferson County.

Many Jefferson County soils are considered prime farmland or prime if drained (see Map 3 – Prime Soil Classification). Productivity of these soils is fairly high and can be sustained using proper conservation practices.

According to the latest USDA Census of Agriculture from 2017, farming has a major economic impact on Jefferson County with over \$305 million in agricultural products being sold. There were 1,098 farms in the county with an average size of 202 acres. These farms cover a total of 221,355 acres. Since 1997, there has been a reduction in the number of farms and acres in farms in the county (Table 3).

Table 3: Farms in Jefferson County (2017 USDA Census of Agriculture)

	1997	2002	2007	2012	2017	% Change from 1997 to 2017
Number of Farms	1,493	1,421	1,434	1225	1098	-26.5%
Average Farm Size (acres)	173	174	170	186	202	+16.8%
Farm Acreage	258,414	247,914	244,238	227,901	221,355	-14.3%

As the downward trend in dairy farm numbers continues, new technology and cropping patterns are emerging. We have seen a marked increase in the use of cover crops and double cropping with twin row technology. A number of county farmers are embracing the new opportunity of hemp farming. No-till popularity is still strong. The use of vertical tillage and variable rate fertilizer applications are also on the increase. Many of these innovations have been adopted to meet conservation standards.

Combating Erosion

In an effort to more consistently estimate soil loss on an annual basis, LWCD began conducting the Soil Loss Transect Survey in 1999.

The Transect Survey was developed by Purdue University and estimates soil loss county-wide with an accuracy rate of over 95%. Department staff drives a designated route through the County, stopping every half mile or so to evaluate present and previous crops, type of tillage, and the slope of the field. The data is collected and calculated by using the SNAP-Plus Nutrient Management Planning software.

Data gathered in the survey includes overall soil loss, evaluation of tillage systems being used, and crop rotation. This information can be further delineated into varying subsets for each of the county's 13 watersheds or other various analytical uses.

The latest survey was conducted in June of 2019 with the following conclusions:

- 70% of all fields were at or below the level of soil loss established by the USDA as tolerable
- The average county soil loss is 3.0 tons/acre/year
- 77% of the crop ground was planted to corn or soybeans
- 14% of the crop ground was planted to hay/alfalfa
- 40% of the crop ground was tilled using minimum tillage
- 25% of the crop ground was no-tilled

When staff are performing the Transect Survey or doing other work through the county, they note any areas experiencing erosion. Staff then will work to identify landowners and talk to them about the erosion, set up any necessary site visits and engineering assistance, and work to install any necessary conservation practices.

Farmland Preservation Program and Conservation

In the mid-1980s, the State of Wisconsin began to require all participants in the Wisconsin Farmland Preservation Program (FPP) have and follow an approved soil and water conservation plan. FPP underwent significant change in 2010 under DATCP's Working Lands Initiative. Among the components of the Working Lands Initiative was the modernization and expansion of the existing Farmland Preservation Program. The tax credit itself changed from an income/property tax basis to a flat per acre rate for lands in exclusive agricultural zoning. There is no cap on the amount of acreage you can claim nor is there a minimum acreage requirement. The farm still must produce \$6,000 in gross farm profits each year and you must meet new conservation criteria.

The new conservation criterion is the same as the NR 151 agricultural nonpoint performance standards. These rules can be divided into two parts; rules for crop producers and rules for

livestock producers. The following is a breakdown of the rules:

Cropland Conservation Standards:

- A soil and water conservation plan meeting applicable sheet, wind, and rill soil erosion standards must be followed.
- A yearly nutrient management plan meeting the current standards (including P-index standards) must be followed.
- Cropland must be managed to include a minimum setback of 5 feet from the top of the channel of surface water where no tillage can occur and 70% self-sustaining vegetative cover is maintained to ensure bank integrity.

Livestock Conservation Standards:

- Any manure storage facility constructed after 2002 must meet NRCS Standards, have no visible signs of leakage or failure, and be maintained to prevent overflow.
- Manure storage facilities in existence as of October 1, 2002, that pose an imminent threat to public health, fish and aquatic life, or groundwater shall be upgraded, replaced, or properly abandoned.
- All clean water must be diverted away from all feedlots, manure storage areas, and barnyards within Water Quality Management Areas (WQMA = areas within 300 feet of streams, rivers or wetlands and within 1000 feet of lakes and in areas susceptible to ground water contamination such as wells and sinkholes).
- Idle manure storage structures must be properly abandoned.
- No unconfined manure stacks in a WQMA.
- Streambanks and lakeshores where animals have access must have self-sustaining sod or vegetative cover to preserve bank integrity.
- No significant discharge from a feedlot or stored manure into waters of the State.
- Pastures must be included in nutrient management plans unless exceptions outlined in State Statute are met.
- No significant discharge of processed waste water to waters of the State from feed storage, milk house waste or other sources.

The farmland that is in compliance with the agricultural performance standards (NR 151) are displayed on Map 4. This land was certified as being in compliance through the Farmland Preservation Program.

On farm status reviews are conducted once every 4 years to insure compliance with the conservation standards.

Participation in FPP has been declining over the last 32 years. Table 4 shows a comparison of FPP participation from 1988 to 2020. Some factors that have contributed to the decline in participation include:

- Farm consolidations

- New compliance requirements, most notably the requirement for nutrient management plans
- Smaller tax credit with new per acre rate for smaller farms
- Elimination of inactive participants from database
- Development and rezoning, including changes to the County's Farmland Preservation Plan

While landowners who are no longer enrolled in FPP are not required to follow their plan, the exposure to conservation planning should have positive lingering effects.

Table 4. Farmland Preservation Program Participation

	1988	2005	2010	2020	% Change from 1988 to 2020
FPP Participants	1,082	1,039	996	639	-40.9%
Acres in FPP	176,000	149,653	145,478	109,534	-37.8%

Agricultural Enterprise Area

Jefferson County has one AEA; the Scuppernong AEA which covers parts of Sullivan and Palmyra Township. Currently there are six farms in the AEA with signed State Agreements covering 755.72 acres. These farms are able to claim the higher per acre FPP tax credit.

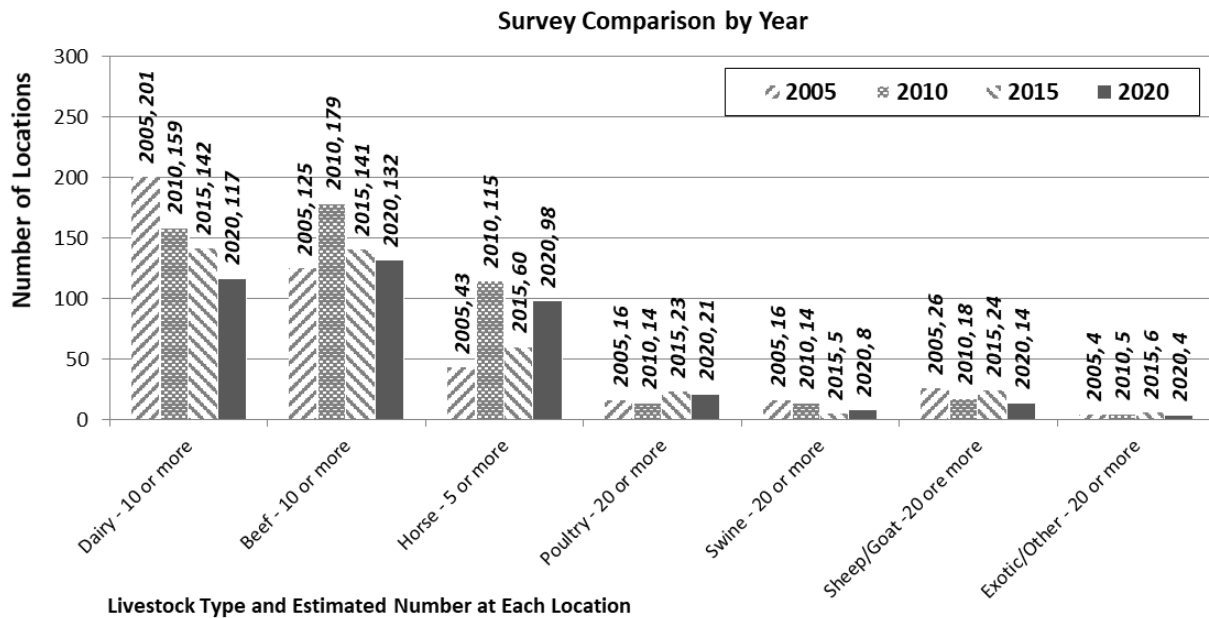
Livestock

The Land and Water Conservation Department conducts a livestock survey every 5 years to identify the location and types of animals. Locations are recorded for farms with 5 or more horses; 10 or more of dairy, and beef; and 20 or more of sheep/goat, swine, commercial chicken operations and other/exotic species that could include donkey, bison, deer, llama, alpaca, duck, geese, pheasant, peacock, honeybee, and fish.

The 2020 survey recorded 394 livestock locations in the county. Distribution of the livestock types was fairly consistent throughout the townships, with the exception of Palmyra and Sullivan where there is a noticeable cluster of horse farms.

Possible trends can be seen when comparing the data from all the recent livestock surveys (Chart 1). Dairy locations continue to decline in the county. It should be noted that this survey does not count the actual number of livestock, but estimates and groups them by abundance. Beef locations varied over time, with some operations increasing in size.

Chart 1. Survey of Livestock and Locations



Wildlife Resources

The Department of Natural Resources maintains a list, known as the Natural Heritage Inventory, of endangered, threatened, and special concern species, as well as a list of high-quality native communities. The list can be found on their website. As of 2020, this species list includes 29 rare plants, 9 rare birds, 7 rare fish, 4 rare reptiles, 3 rare butterflies and moths, 2 rare leafhoppers and true bugs, 2 rare mussels and clams, and one each of rare amphibian, beetle, grasshopper, damselfly, mammal.

The Land and Water Conservation Department administers the Wildlife Damage Abatement and Claims Program for Jefferson County. This program works to minimize wildlife damage to crops and offers partial compensation for damage caused by wild deer, bears, turkeys, and geese.

Natural Areas

Jefferson County currently has 1070 acres of county parkland consisting of 18 parks, and 17 miles of the paved Glacial River Trail. Jefferson County has 182 miles of DNR funded snowmobile trails and 114 miles of club maintained trails for a total of 296 miles. The county parks offer a variety of recreational offerings including hiking trails, cross country ski trails, fishing areas, boat launches, scenic overlooks, picnic facilities and limited overnight camping.

Federal, state, non-governmental organizations and municipal governments own and manage natural areas in Jefferson County. These areas consist of the following:

- Federal - 247 acres
- State - 19,753 acres
- State Trails - 27miles
- Municipal - 875 acres
- Non-governmental Organizations - 656 acres

Environmental Corridors

Environmental corridors are natural areas and environmentally sensitive areas that contain floodplains, wetlands, public parks, recreation lands, conservancy lands, contiguous woodlands of greater than 10 acres, and land with a slope greater than 20% (see Map 5 – Environmental Corridors).

Surface Water Resources

Jefferson County consists of 13 river watersheds of which 12 drain to the Rock River (see Map 6). A small portion of the Southeast corner of Jefferson County drains to the Illinois Fox watershed. The lake watersheds are depicted in Maps 7 and 8. Map 9 depicts the surface water resources of the county.

Exceptional Resource Waters

The entire segment of Allen Creek in Jefferson County has been designated as an Exceptional Resource Water (see Map 10 - Impaired and Exceptional Waters). Exceptional Resource Waters are defined by the State as having excellent water quality and valued fisheries but may already receive wastewater discharges. In some cases, new discharges may be allowed to correct environmental or public health problems. Please see section below on Allen Creek.

Impaired Surface Waters and the Rock River Recovery

The DNR lists surface waters in the state that are impaired in that they do not meet water quality standards or designated uses. Table 5 is the 2018 list of impaired waters for Jefferson County (see Map 10 - Impaired and Exceptional Waters). Once a water body is on the impaired list, the DNR is required to develop and implement the “total maximum daily load” (TMDL) process. This process includes the identification of all point and nonpoint sources of the pollutants of concern, allocation of total maximum daily discharges from all sources, and monitoring and modeling to restore impaired waters and meet water quality standards. A phosphorus and sediment TMDL for the Rock River, called Rock River Recovery, was approved by DNR and the U.S. Environmental Protection Agency in 2012. The Rock River Recovery plan divides the Rock River watershed into 83 sub-basins called reaches. Each reach has phosphorus and sediment reduction goals to meet water quality standards. The reaches in Jefferson County are displayed in Map 11 and the associated phosphorus baseline losses and reduction targets

are presented in Table 6. Please note that the small watershed in the southeast corner of the County is not included as it is in the Fox River Basin and is not part of the Rock River Recovery. The LWCD will continue to rely upon existing programs and authorities to implement the Rock River Recovery plan. The LWCD will consult with DNR when working on determining phosphorus losses as compared to TMDL reduction targets.

Table 5. 2018 Impaired Waters (Source: DNR)

Water Body (stream miles)	Priority & Status	Pollutants	Impairments*
Ashippun River 0-33.17	Low priority, 303d listed 2014	Total phosphorus	unknown
Bark River 0-12.46	Medium priority, 303d listed 2016	Total phosphorus	Degraded biological community
Crawfish River 0-11.04	Medium priority, 303d listed 2016	Total phosphorus	Water quality use restrictions
Hoopers Millpond	Low priority, 303d listed 1998	PCBs	contaminated sediment
Johnson Creek 0-17.5	TMDL approved	Sediment, total suspended solids, total phosphorus	degraded habitat and biological community
Koshkonong Creek 0-27.27	Low priority, 303d listed 2016	Total phosphorus	Water quality use restrictions
Koshkonong Creek 27.27-48.42	Low priority, 303d listed 2012 & 2016	Total phosphorus	Degraded biological community, water quality use restrictions, elevated water temperatures
Lake Koshkonong	TMDL approved	sediment, total suspended solids, total phosphorus	low dissolved oxygen, eutrophication, degraded habitat, turbidity
Lower Spring Lake	Low priority, 303d listed 2012	Total phosphorus	unknown
Maunsha River 0-13.21	TMDL approved	sediment, total suspended solids, total phosphorus	degraded habitat, low dissolved oxygen
Mud Lake (Lake Mills)	Low priority, 303d listed 2018	Total phosphorus	Eutrophication, excess algal growth
Rock Creek 2.21-3.14	Low priority, 303d listed 2018	Total phosphorus	unknown
Rock River 213.62-249.13	TMDL approved	Total phosphorus	low dissolved oxygen, degraded biological community, eutrophication

Water Body (stream miles)	Priority & Status	Pollutants	Impairments*
Rock River 249.13-293.25	TMDL approved	Sediment, total suspended solids, total phosphorus	Degraded habitat
Scuppernong River 0-13	Low priority, 303d listed 2014	Total phosphorus	unknown
Spring Creek 0-4.52	TMDL approved	sediment, total suspended solids, total phosphorus	degraded habitat, elevated water temperature
Steel Brook 1.7-2.7	TMDL approved	sediment, total suspended solids, total phosphorus	elevated water temperature, degraded habitat, low dissolved oxygen
Stony Brook 0-15.43	TMDL approved	Sediment, total suspended solids	degraded habitat
Unnamed stream (Lake Ripley inlet) 0-3.62	Medium priority, 303d listed 2016	Total phosphorus	unknown

Table 6. Rock River Recovery Reaches and Associated Phosphorus Baseline Losses and Reduction Targets (Source: DNR)

Waterbody Reach	Extent	Baseline P loss (lbs/ac/yr)	Required % Reduction	P Reduction Target (lbs/ac/yr)
56 Bark River	Scuppernong River – Mile 35	6	33%	4
53 Crawfish River	Rock River – Beaver Dam River	6	18%	4.9
30 Johnson Creek	Mile 0 – 17.5	6	24%	4.6
83 Lake Koshkonong		6	37%	3.8
46 Maunsha River	Mile 5.5 – 13.2	6	37%	3.8
47 Maunsha River	Stony Brook – mile 13.2	6	41%	3.5
25 Oconomowoc River	Battle Creek – Mason Creek	6	52%	2.9
27 Oconomowoc River	Rock River – Battle Creek	6	10%	5.4
20 Rock River	Mile 270 - 293	6	27%	4.4
21 Rock River	Mile 270-293	6	27%	4.4
28 Rock River	Mile 249 – Oconomowoc River	6	15%	5.1
29 Rock River	Johnson Creek – mile 249	6	36%	3.8
31 Rock River	Crawfish River – Johnson Creek	6	47%	3.2
54 Rock River	Bark River – Crawfish River	6	36%	3.8
60 Rock River	Mile 213 – Bark River	6	23%	4.6

Waterbody Reach	Extent	Baseline P loss (lbs/ac/yr)	Required % Reduction	P Reduction Target (lbs/ac/yr)
57 Spring Creek	Mile 0 – 5	6	49%	3.1
58 Steel Brook	Mile 3 – 4	6	26%	4.4
59 Steel Brook, Scuppernong River, Bark River	Rock River to Steel Brook, Spring Creek	6	41%	3.5
48 Stony Brook	Mile 0 – 15	6	28%	4.3

Note: The majority of the reaches (except for 30, 31, and 54) are partially contained in other Counties and therefore some of the load reductions could occur outside of Jefferson County.

Streams and Rivers

Jefferson County has numerous streams and rivers. Table 7 provides information on the major streams and rivers including biological use categories and environmental problems occurring at each river.

The Rock River Coalition trains and equips volunteers to monitor streams throughout the Rock River watershed. The Jefferson County LWCD assists with training, places monitors at their locations, and supports the monitors in various ways. The following parameters are monitored monthly from May to October (depending on stream conditions): dissolved oxygen, clarity, temperature, water flow, and stream insects that give an indication of the health of the stream. Currently, the streams that are being monitored include Allen Creek, Bark River (2 sites), Battle Creek, Lake Ripley's inlet stream (4 sites), Lake Ripley's outlet stream, Mud Creek, Rock Creek (3 sites), and Stony Brook. When looking at the last 10 years, the following addition streams/ivers have been monitored by citizens: Oconomowoc River, Mauneshia River, Koshkonong Creek, and Johnson Creek.

Table 7. Characteristics of Streams (Source: DNR)

Stream	Length (miles)	Existing Use	Attainable Use	Fish & Aquatic Life Condition
Allen Creek ¹	0 - 7.52	WWSF	WWSF	Good
Ashippun River ¹	0 - 31.8	FAL	WWSF	?
Bark River ¹	0 - 12.46	FAL	FAL	Poor
	12.46 - 25.95	FAL	FAL	Good
	27.95 - 35	FAL	FAL	?
Battle Creek	0 - 2.1	FAL	WWFF	Good
Crawfish River ¹	0 - 11.04	FAL	FAL	Poor
	11.04 - 20.94	FAL	FAL	Excellent
Deer Creek	0 - 3.65	WWSF	WWSF	Good
	3.65 - 8.22	FAL	FAL	?

Stream	Length (miles)	Existing Use	Attainable Use	Fish & Aquatic Life Condition
Duck Creek	0 - 11.83	WWSF	WWSF	Good
Galloway Creek ¹	0 - 9.36	WWFF	WWFF	Good
Johnson Creek	0 - 17.5	LFF	WWSF	Poor
Koshkonong Creek ¹	0 - 48.2	WWSF	WWSF	Poor
Mauneshia River ¹	0 - 13.21	FAL	FAL	Poor
Mud Creek	0 - 7.97	FAL	FAL	Excellent
Oconomowoc River ¹	0 - 13.95	FAL	FAL	Fair
Otter Creek ¹	0 - 15.25	WWSF	WWSF	Good
Rock Creek	0 - 1.77	FAL	FAL	Good
	2.21 - 3.14	FAL	FAL	Poor
	3.14 - 4.46	FAL	FAL	Good
	6.44 - 7.51	FAL	FAL	Good
Rock River ¹	207.32 - 286-97	WWSF	WWSF	Poor
Scuppernong River	0 - 12.46	FAL	WWSF	Poor
Spring Creek ¹	0 - 4.52	LFF	WWFF	Poor
Steel Brook ¹	0 - 1.7	FAL	WWFF	?
	1.7 - 2.7	FAL	WWFF	Poor
	2.7 - 4.15	FAL	WWFF	?
Stony Brook ¹	0 - 15.43	LFF	WWSF	Poor
	1.44 - 2.18	FAL	FAL	?
Whitewater Creek ¹	0 - 8.08	WWSF	WWSF	Good

Allen Creek

The creek is designated by the Department of Natural Resources as an exceptional resource water with good ecological diversity. The Allen Creek watershed is just over 9 square miles. Wetlands cover approximately 11% of the watershed area. The wetlands that are adjacent to the stream help buffer it from pollution. However, sediment and nutrient loads are increasing due to historic ditching of tributaries, polluted runoff from stream bank pasturing, and steep slopes. Road salt runoff from Business Highway 26 also affects the creek.

The Friends of Allen Creek Watershed formed in 2005 to understand and protect the Allen Creek Watershed, and to promote the natural communities in the basin. To this end, the FACW received a river grant from the Department of Natural Resources. The following is an excerpt of their work regarding water quality:

“Allen Creek is a high quality, cool water stream that possesses excellent physical and chemical factors important for stream biota. The combination of cool surface waters, high transparency, high dissolved oxygen, and low total dissolved solids suggest that the water flowing from upstream-to-downstream is in excellent condition and does not tend toward a decrease in photosynthesis, which is important in ecosystem function.”

Currently, the watershed group is not active. However, citizen stream monitoring has been done on and off in the last 10 years.

The least darter, a fish species on the State Special Concern list, is found in Allen Creek. Northern pike spawning habitat is found in wetlands adjacent to the stream and the Rock River.

Johnson Creek

The Johnson Creek Watershed Alliance was formed and became a chapter of the Rock River Coalition in 2014. The group has done stream monitoring, stream clean-ups, and partnering with the local school in its activities.

The following invasive species have been found in Johnson Creek: curly-leaf pondweed, rusty crayfish.

Koshkonong Creek

Koshkonong Creek has been free flowing since the removal of the Rockdale dam in 2001. Stream bank restoration and re-vegetation projects were implemented after the dam removal to reduce sedimentation downstream. However, agricultural operations in the watershed continue to affect the water quality.

The stream is classified as a warm water sport fishery. However, bullhead and rough fish dominate the fishery. Rusty crayfish, and invasive species, has been documented in the stream. Wetlands near the mouth of the creek at Lake Koshkonong provide spawning areas for northern pike.

The Department of Natural Resources completed a watershed assessment of the creek in 2016. Some notable information from this assessment is as follows:

- A large percentage of the original wetlands in the watershed were drained for agricultural purposes.
- Wetland loss, ditching, and use of field tiles has allowed signification nutrient and sediment loads to the creek.
- There were 42 fish species identified in the creek and its tributaries. The majority are tolerant species. However, there were some sensitive species found including banded darters and blackside darters.

The assessment noted some possible actions to improve the creek's quality:

- Soil health and cover crop practices could be used to work on reducing sediment and nutrient levels in the stream.
- When Drainage Districts implement water flow improvements, they should also take efforts to protect in-stream habitat and ensure riparian habitat is protected from erosion and wetland degradation.

Mauneshia River

The Mauneshia River Alliance was formed and became a chapter of the Rock River Coalition in 2014. The early work of the organization concentrated on citizen stream monitoring. There were a few years that the group became inactive – but a new Board was formed in 2019. This group has been very active with stream clean ups including clearing trees for navigation.

Mud Creek

Mud Creek is located in the Towns of Sullivan and Palmyra. The DNR fisheries biologist recommended it be monitored through the citizen stream monitoring program because it could be a potential candidate for the stocking of brook trout, a Wisconsin native. Citizens have monitored this stream at Hwy CI since 2015. A constant temperature recording device has been placed in the water at this site each monitoring season to determine if the stream's temperature range can support brook trout. With 5 years of data, more work will need to be done to determine the suitability of the stream for brook trout.

Lakes

Jefferson County has 25 lakes that are an important resource not only for recreation, but also for plant and animal habitat. The lakes encompass 14,587 acres of water and 97 miles of shoreline. Table 8 lists some pertinent information on the lakes.

Though there are many lakes in the county, only a few of them have undergone water quality and habitat analysis. Because of their designation by the Department of Natural Resources as Long Term Trend Lakes, Lake Ripley and Rock Lake have benefited from such analyses. The other lakes in the county with more than basic data collection are those that have organized lake management districts and include Blue Spring Lake, Lake Ripley, Lower Spring Lake, and Lake Koshkonong.

Table 8. Characteristics of Lakes.

Name	Surface Area (acres)	Max Depth (feet)	Mean Depth (feet)	Public Access	Lake Type	Fish & Aquatic Lake Condition
Bean Lake	33	6		T	SE	Suspected Poor
Blue Spring Lake*	141	26	7	BR	SP	Good
Golden Lake	250	46	13	BR	SP	Good
Goose Lake	143	4		NO	DG	Good
Hahns Lake	88	10	2	NW	DG	Suspected Poor
Haumerson Pond	4	3		R	SE	?
Hope Lake	126	24	5.4	BR	SE	Good
Kurtz Pond	4	3		NO, S	DG	?
Lake Koshkonong*	10,460	7	5	BR	DG	Poor

Name	Surface Area (acres)	Max Depth (feet)	Mean Depth (feet)	Public Access	Lake Type	Fish & Aquatic Lake Condition
Lake Ripley	418	44	18	BR	DG	Excellent
Lower Spring Lake*	109	11	4	BR	DG	Poor
Mud Lake, Sumner	318			NW		?
Mud Lake, Sullivan	0.3			NO		?
Mud Lake, Lake Mills	95	22	7.4	BR, T	DG	Poor
Mud Lake, Concord	8	6		NO, S	DG	?
Perch Lake	5	7		NO, S	SE	?
Red Cedar Lake	336	6		BR, T	SE	Good
Rock Lake	1,371	56	16	BR	DG	Excellent
Rome Mill Pond*	448	7	2	BR	DG	Good
Rose Lake	140	10		T	SE	Good
Round Lake	2	3		NO, S	SE	?
Sindon/Weegs Pond	10	12		NO, S	DG	?
Spence Lake	33	6		T		Fair
Upper Spring Lake*	24	11	4	NO	DG	Good

* Impoundment

Lake Table Key

Public Access

BR – Boat ramp

NO – No access

NW – Navigable water access to lake

R – Roadside access

T – Walk-in trail

X – Access not specified

Lake Hydrologic Types

Drainage Lake (DG): Impoundments and natural lakes with the main water source from stream drainage. Has at least one inlet and one outlet.

Spring Lake (SP): Seldom has an inlet but always has an outlet of substantial flow. Water supply is dependent upon groundwater rather than surface drainage.

Seepage Lake (SE): Landlocked. Water level maintained by groundwater table and basin seal. Intermittent outlet may be present.

Blue Spring Lake

Blue Spring Lake has a Lake Management District. Since 2013, there has not been a water quality monitor for the lake. However, that changed in 2020. The lake is characterized as a mesotrophic lakes characterized by moderately clear water, but these lakes have an increasing chance of low dissolved oxygen in deep water during the summer.

In 2019, an aquatic plant management plan was developed for the lake. The lake has two invasive aquatic plants: Eurasian water milfoil and curly-leafed pondweed. The lake also has a hybrid of Eurasian water milfoil and Northern water milfoil that can be invasive. The Lake

District does own and operate a mechanical harvester to help manage the invasive and nuisance aquatic plants. Nuisance plants such as Eurasian water milfoil and curly-leaf pondweed can crowd out other more desirable plants, resulting in a loss of biodiversity.

The invasive species banded mystery snail has been documented in the lake.

Golden Lake

The Department of Natural Resources (DNR) and the Wisconsin Geological and Natural History Survey analyzed the aquatic plants in eight littoral areas in Golden Lake. Though this was not a comprehensive plant survey, the results indicate that the lake supports a diversity of plants - 21 different species of aquatic plants were identified.

In 2006, the DNR designated the northern basin of Golden Lake as a sensitive area. Sensitive areas are those that offer “critical or unique fish and wildlife habitat, including seasonal or life stage requirements, or offering water quality or erosion control benefits to the body of water” (WI Administrative Code NR 107.05 (3)(i)(1)). A total of 19 aquatic plant species were identified in this area. The sensitive area designation report states the following: “This sensitive area, with its rich ecological diversity, serves as a nutrient buffer for reducing algae blooms, a biological buffer reducing the likelihood of exotic species invasions, a physical buffer against shoreline erosion, a micro-habitat increasing biodiversity, and allows for sediment stabilization.”

Golden Lake has the following invasive species: curly-leaf pondweed, Eurasian water-milfoil, a hybrid between Eurasian water milfoil and the native northern water-milfoil, purple loosestrife, and zebra mussel.

Hope Lake

In 2007, the LWCD received a DNR Lake Planning grant to collect water quality and biological information in order to develop a management plan for Hope Lake. The study found that Hope Lake is mesotrophic. There are approximately 26 species of aquatic plants, 3 of which are invasive species: curly-leaf pondweed, Eurasian water milfoil, purple loosestrife. A variety of fish were found in the lake, but it is thought that winter kill and low dissolved oxygen due to over productivity is a problem. The black tern, a Species of Greatest Conservation Need, was found nesting on Hope Lake.

Lake Koshkonong

The Rock Koshkonong Lake District formed in 1999 to better manage the resources of the Rock River and Lake Koshkonong. The district boundary starts at the Indianford Dam on the Rock River, includes Lake Koshkonong and continues north to the limits of the City of Jefferson. The district has mainly worked on water level issues.

The lake has had a citizen lake monitor since 2015. The lake is characterized as a eutrophic lake. Lake Koshkonong has the following invasive species: curly-leaf pondweed, flowering rush, and zebra mussel.

The Lake Koshkonong Wetland Association works to educate the public about the benefits of wetlands.

Lake Ripley

In 1993 Lake Ripley became a Priority Lake Project because it was recognized that (1) the lake provided valuable recreational and economic amenity for the area, (2) it was significantly threatened by the effects of nonpoint source pollution, and (3) there was a high potential for overall improvement once appropriate management strategies were implemented.

The Lake Ripley Management District has staff that work on implementing recommendations of their lake management plan. This plan is currently being updated and may be revised to include the U.S. Environmental Protection Agency's nine key elements. The existing plan (2009) has the following goals: clean, clear water; thriving, native aquatic life; safe, fair and responsible lake use; cost-effective management action; and a well-informed and engaged citizenry. The plan includes many recommendations that aim to achieve the goals of the plan.

Since 1998, Lake Ripley has had consistent water quality monitoring taken by citizens. The water quality condition of the lake is on the line of eutrophic and mesotrophic. Phosphorus and sediment are pollutants of concern for Lake Ripley's water quality. The sources of these pollutants are mainly nonpoint source pollution from agriculture and intensive development.

The Lake District implements its own cost-sharing program to install practices on private lands that will work to reduce erosion and pollution as well as increasing habitat.

Lake Ripley contains several invasive species including Eurasian water milfoil, a hybrid of Eurasian water milfoil and the native northern water-milfoil, curly-leaf pondweed, phragmites, and zebra mussel. The lake manages nuisance aquatic plant species in certain locations with a mechanical harvester that cuts the plants, which are then disposed of on land.

Wetlands, important for fish and wildlife habitat and pollutant filtration, have significantly decreased in the Lake Ripley watershed. A 1903-1908 mapping effort documented 1,500 acres of wetlands. In the 2006-2010 plan, we reported that there were approximately 385 acres of wetlands in the watershed, which represents a loss of 1,115 acres, mostly attributed to agricultural tillage, drain modification, and development. The Lake Ripley Management District has worked to restore and prevent the loss of wetlands in the watershed.

Studies and reports on Lake Ripley include: lake management plan, aquatic plant management plan, lake capacity study, near-shore fish surveys, and a study on the impacts of pier shading on the near shore environment.

Lower Spring Lake

The Lower Spring Lake Protection and Rehabilitation District consists of citizens with lake property. The district's main activity is to work on managing the invasive plant species on the lake.

In 2005, the Lower Spring Lake Protection and Rehabilitation District had an aquatic plant management plan completed because of excessive aquatic plant growth and the desire to improve the recreational and environmental aspects of the lake. The plan was updated in both 2011 and 2018. In the past, the District funded chemical treatment to control invasive plants along the shorelines of developed lots. From 2010 to 2017, the District implemented multiple whole-lake chemical treatments. However, due to the flushing rate of the lake, these treatments were not successful in achieving long-term management of the invasive plant species. A mechanical harvester is used all summer to prevent aquatic plants from reaching the surface of the lake. These measures were done to improve navigation, recreation, and riparian access.

In the winter of 2019-2020, the lake implemented a 4 foot water drawdown to try to kill Eurasian water milfoil in the exposed sediments. This management technique provides a lower cost alternative to chemical treatment. It is most effective when there is a prolonged period of frozen ground with little snow cover. At this point, the results of this drawdown have not been fully analyzed.

The lake has many years of water quality data (2004-2020) on it as a citizen collects the data via the Citizen Lake Monitoring Network.

Mud Lake – Lake Mills

In 2007, the LWCD received a DNR Lake Planning grant to collect water quality and biological information in order to develop a management plan for Mud Lake. The study documented Mud Lake to be eutrophic. A total of 13 fish species were documented in the lake in 2007. In addition, 19 species of aquatic plants were found, one of which is invasive: curly-leaf pondweed. The Blanding's turtle, a Wisconsin Threatened Species, was viewed in the lake.

Since 2017, there are 2 citizens who collect water quality data on the lake. Curly-leaf pondweed is an invasive species that has been documented on the lake.

Red Cedar Lake

Red Cedar Lake has had a water quality monitoring performed on it by a citizen since 2004. It is a eutrophic lake.

Purple loosestrife, an invasive wetland plant, has been documented along the shoreline of the lake.

Rock Lake

Rock Lake has 2 lake groups: the Rock Lake Improvement Association and the Joint Rock Lake Committee that provides advice to both the City and Town of Lake Mills. In 2018, the Rock Lake Management Plan was updated. The vision of the Rock Lake Management Plan is to “work in partnership with our community to protect and enhance water quality, habitat, and recreational assets in Rock Lake and its watershed for current and future generations.” The goals are:

- Improve the water quality of Rock Lake by reducing the summer average phosphorus level in Rock Lake by 20% by the year 2028.
- Measure the health of lakes and streams in the Rock Lake Watershed with volunteers and applicable technologies to track trends and identify sources of pollutants.
- Achieve a diverse ecosystem in the water and on the land for native plants and animals to thrive.
- Ensure a safe and healthy multipurpose recreational environment.
- Achieve a more knowledgeable and active public in regards to Rock Lake, the watershed, and the lake management plan.

There are many recommendations under each goal.

Rock Lake has good water quality but nonpoint source pollution and degrading nearshore habitats threaten the water quality and fish and wildlife habitat functions of the lake.

Wetlands and upstream lakes in the watershed have effectively protected Rock Lake’s water quality. Throughout the years, these resources function as filters that remove phosphorus and other pollutants before they reach Rock Lake. However, their ability to trap pollutants is declining and the phosphorus loading, especially to Mud Lake, is degrading the water quality of these “buffer” lakes and wetlands.

Fish and wildlife habitat is threatened in the lake and watershed due in part to water quality impairments, and the effects of development and recreation. Rock Lake’s diverse aquatic plant community has been impaired due to the extensive piers, seawalls, and motor boat traffic. The lake has the following invasive species: banded mystery snail, Chinese mystery snail, curly-leaf pondweed, Eurasian water-milfoil, a hybrid of Eurasian and northern water-milfoil, yellow iris, and zebra mussel. Drained wetlands and wetlands with declining water quality also result in reduced fish and wildlife habitat in the watershed.

Additional studies and reports on Rock Lake include an aquatic plant survey, a study of the impacts of pier shading on the near shore environment, near-shore fish surveys, several reports on the watershed draining to the Miljala channel on the west side of the lake, and the shoreland and shallows survey.

Wetland Resources

Jefferson County has 55,518 acres of wetlands that are designated by the Department of Natural Resources (see Map 12). The Land and Water Conservation Department provides resources to landowners about protecting the wetlands on their property.

Groundwater Resources

Groundwater recharge takes place in the uplands, which consist of glacial till. The groundwater moves downward toward areas of lower elevation. In places, these low areas are overlain with silt and clay deposits of low permeability. This results in artesian conditions, particularly evident in the Scuppernong Creek and Bark River basins where flowing wells and springs are numerous and where peat mounds developed over some of the springs.

As part of a State requirement, source water areas for each municipal well in the county were delineated. Municipal officials used a 1,200 foot radius surrounding the wells to determine the source water areas.

The Land and Water Conservation Department provides well water testing information to citizens. It is recommended that citizens who live in rural areas test their wells every year.

Goals, Objectives, Activities

The Jefferson County Land and Water Resources Management Plan was developed to plan for a ten year period from 2021 through 2030. The plan goals, objectives, and activities will be reviewed after 5 years as required by the state.

Overall Goal of Land and Water Resources Management Plan

The overall goal of this plan is to restore, improve, and protect land and water resources in Jefferson County so that families and individuals can have access to productive farmland, healthy natural areas, and clean water to use and enjoy.

The work plan contained below details all of the goals, objectives, and activities of the Jefferson County Land and Water Resources Management Plan. This work plan was developed to achieve the overall goal listed above. It also was developed given the conservation needs identified through the public process that included the Advisory Committee and the public hearing.

The LWCD knows that changes to the climate will result in impacts to our land and water resources. Threats to our resources consist of increased extreme weather events and warmer climates that could result in a number of impacts including: changes to fish, plant, and wildlife communities; increased flooding; increased soil erosion, and increased invasions of nuisance aquatic and terrestrial species.

The LWCD staff attend educational sessions, when available, on climate change and possible adaptation practices or strategies that could help ease the impacts of climate change. One strategy is wetland restoration as restored wetlands can hold water during extreme precipitation events and have the potential to reduce the amount of flooding. Climate adaptation practices and strategies will be incorporated into the work of the LWCD as they become available.

The Work Plan is detailed below. Items in the Work Plan that are identified in bold are priority activities for the Land and Water Conservation Department. Benchmarks for priority items, including anticipated outcomes, are included in the Work Plan also. It is important to note that the implementation of the work plan is dependent on receiving adequate financial resources to cover staff and the cost-sharing programs.

Jefferson County Land and Water Resources Management Plan Work Plan 2021-2030

The Jefferson County Land and Water Resources Management Plan was developed to plan for a ten year period from 2021 through 2030.

Overall Goal of Land and Water Resources Management Plan:

Restore, improve, and protect land and water resources in Jefferson County so that families and individuals can have access to productive farmland, healthy natural areas, and clean water to use and enjoy.

The work plan details the goals, objectives, and activities of the Jefferson County Land and Water Resources Management Plan. This work plan was developed to achieve the overall goal listed above. Items in the work plan that are identified in bold are priority activities for the Land and Water Conservation Department. It is important to note that the implementation of the work plan is dependent on receiving adequate financial resources to cover staff and the cost-sharing programs.

Goal #1: Improve and protect agricultural land, soil resources, surface and ground water through the implementation of agricultural programs, and State and County laws. The implementation of these programs/laws will also achieve progress on the Rock River Recovery Plan.

Objectives	Activities (Responsible Agencies)	Time Frame, Anticipated Outcome
Implement the NR151 Agricultural Performance Standard to Protect County Resources. Benchmark: Farms achieve standards by using DATCP cost-share funds.	Provide technical assistance and cost-sharing so that farms attain compliance with the Agricultural Performance Standards. (LWCD/NRCS/DATCP)	Fully spend cost-share allocation
	Continue working to engage DNR to develop and sign a Memorandum of Understanding regarding enforcement responsibilities for Ag Performance Standards and Prohibitions. (LWCD/DNR)	2021-2026
	Educate landowners about NR 151 rules (LWCD): <ul style="list-style-type: none"> • Address sheet, rill, gully and wind erosion with conservation planning and implementation 	Ongoing

Objectives	Activities (Responsible Agencies)	Time Frame, Anticipated Outcome
	<ul style="list-style-type: none"> • Require nutrient management plans (NMP) be turned in prior to planting for Farmland Preservation eligibility • Encourage adoption of NMPs by all producers, offering cost-sharing when available • Ensure all manure storage structures meet standards, including no overflow of structures and proper closure of unused storage • Divert clean water from contacting feedlot manure storage areas and barnyards within WQMA • Achieve a P-Index of 6 or less on all cropland and applicable pastures • Maintain adequate tillage setbacks from the top of water channels • Include pastures in NMP unless exempt • Ensure there is no significant discharge of process wastewater to waters of the state. 	
	Provide education on nutrient management planning and implementation - includes teaching farmers how to write and update their own NMPs. (LWCD/UWEX/DATCP)	4 classes/yr
	Educate landowners about manure storage and nutrient management ordinances and permits to ensure that manure storage facilities are built, expanded, and closed according to standards. (LWCD)	As needed; all construction meets standards
Implement the Farmland Preservation Program to Protect County Resources. Benchmark: Complete status reviews & issue compliance timelines in 4 quadrants of county in 4 years.	Require FPP participants to be compliant with NR 151 rules. (See above objective)	Ongoing
	Continue outreach to landowners and partners on the requirements of the program, including newsletters aimed at: program participants, nutrient management planning consultants, and farmers who write their own nutrient management plans. (LWCD/DATCP)	Ongoing 3 newsletters per year
	Perform on-site evaluations to determine compliance status. (LWCD)	Approx. 160-180 per year

Objectives	Activities (Responsible Agencies)	Time Frame, Anticipated Outcome
	Encourage participation in FPP. (LWCD)	Ongoing 10 new participants/ year
	Take necessary steps (plan revisions, practice development, or notice of noncompliance) when landowners are non-compliant with requirements of program. (LWCD)	As needed
Ensure that livestock facilities expand according to standards that protect County resources. Benchmark: Facilities compliant with standards.	Review application materials and worksheets for completion with Livestock Siting rules. (LWCD)	As needed
	Provide information on status of applications to Zoning, Townships, landowners, and DATCP. (LWCD/Zoning)	As needed
	Attend public hearings and meetings. (LWCD)	As needed
Statutes, Administrative Rules, Ordinances: ch. 88 Drainage of Lands, ch. 91 Farmland Preservation, ch. 92 Soil and Water Conservation and Animal Waste Management, ATCP 50 Soil and Water Resource Management Program, ATCP 51 Livestock Facility Siting, NR 151 Runoff Management, NR 243 Animal Feeding Operations, Jefferson County Zoning Ordinance, Jefferson County Animal Waste Storage and Nutrient Management Ordinance.		
Approximate Costs: 5,880 hours of staff time per year, \$30,000 in cost share funds per year		

Goal #2: Protect and enhance surface water, ground water, wetland quality, and associated habitat areas.

Objectives	Activities (Responsible Agencies)	Time Frame, Anticipated Outcome
Protect surface water resources and habitat quality via the Conservation Reserve Enhancement Program.	Work with landowners to implement stream buffers, waterways, and wetland restorations. (NRCS/FSA/LWCD)	Ongoing 1-15 contracts/yr

Objectives	Activities (Responsible Agencies)	Time Frame, Anticipated Outcome
Reduce sediment and phosphorus delivery in the Rock River Basin to implement the Rock River Recovery Plan.	Work with landowners and municipalities to implement practices to achieve pollutant reduction goals with available Multi-Discharger Variance funds. (LWCD/NRCS/FSA/DNR/municipalities)	Ongoing when funds available
	Develop watershed plans, using the 9-key element framework, in impaired/TMDL watersheds. (LWCD/DNR/NRCS)	2 HUC 12 size plans by 2025-30
Protect surface water resources and habitat quality by implementing best practices.	Provide landowners with technical assistance and cost-sharing on Healthy Lakes and River projects (shoreland gardens, rain gardens, water diversions, rock infiltration and fish sticks) and erosion control projects.	2-5 practices/yr
	Assist landowners with the state and county permit process. (LWCD/DNR/Zoning)	As needed
	Direct landowners to cost-sharing programs and technical assistance for wetland restorations. (LWCD/NRCS/DNR)	As needed
	Assist citizens, municipalities, and water resource groups with the implementation of programs and practices to reduce the introduction and spread of aquatic invasive species. (LWCD/UWEX/DNR/water resource groups)	Ongoing
Ensure that groundwater is protected from pollution.	Provide landowners with information on testing their drinking water wells. (LWCD/UW-EX)	As needed
	Provide cost-sharing for the closure of wells. (LWCD)	1 closure/yr
	Determine how to achieve more well water testing by landowners and then implement it. (LWCD/Health/UWEX)	2021-2025, Ongoing
	Obtain a better understanding of the ground water quality (including devise a plan to achieve a ground water quality study,	2022-2027

Objectives	Activities (Responsible Agencies)	Time Frame, Anticipated Outcome
	secure necessary funding, and implement study) and how to protect the quality of the ground water. (LWCD/Health/UWEX)	
<p>Ensure decision-makers and citizens have resource information and tools necessary to achieve protection of lakes, rivers, and wetlands.</p> <p>Benchmark: Provide necessary information to decision-makers</p>	Provide water resource groups and municipalities with data, maps, educational resources and technical assistance. (LWCD/UWEX/DNR/RRC)	Ongoing
	Obtain grants to fill data and information gaps, and develop management plans and programs. (LWCD/DNR/water groups)	Ongoing
	Support the County's efforts to develop and protect green space and environmental corridors that surround lakes, rivers and streams. (LWCD/Parks)	As needed
	Assist the Zoning Department with technical expertise on shoreland zoning decisions. (Zoning/LWCD/DNR)	Ongoing
	Educate the public, land use planning entities, and municipalities about the benefits of wetlands and laws governing wetlands. (LWCD/DNR/Zoning)	Ongoing
	Educate citizens, municipalities, and water resource groups about aquatic invasive species laws and programs.	Ongoing
	Educate citizens and municipalities about construction site erosion control measures and laws including municipality responsibilities and available erosion control inspector trainings. (LWCD/DNR/Zoning)	As needed
<p>Statutes, Administrative Rules, Ordinances: ch. 92 Soil and Water Conservation and Animal Waste Management, ATCP 50 Soil and Water Resource Management Program, NR 115 Wisconsin's Shoreland Management Program, NR 117 Wisconsin's City and Village Shoreland-Wetland Protection Program, NR 40 Invasive Species Identification, Classification and Control, NR 216 Storm Water Discharge Permits, NR 812 Well Construction and Pump Installation, Jefferson County Zoning Ordinance.</p>		
<p>Approximate Costs: 3,220 hours of staff time per year, \$15,000 in cost-share funds per year</p>		

Goal #3: Preserve and protect natural areas, woodlands, open space, and farmland for the benefit of Jefferson County citizens and visitors.

Objectives	Activities (Responsible Agencies)	Time Frame, Anticipated Outcome
Assist the Parks Department with implementation of the Recreation, Parks, and Open Space Plan.	Provide technical support and maps for natural area and agricultural lands protection. (Parks/LWCD/Zoning/LI)	As needed
Implement the County's Purchase of Agricultural Conservation Easements program (PACE).	Provide administration, document preparation, technical support, maps, and monitoring for PACE program. (LWCD/NRCS)	As needed
	If received, administer PACE program with Regional Conservation Partnership Program grant funds. (LWCD/AFT/NRCS)	2021-2025
	Monitor the donated and purchased easements for compliance. (LWCD)	Annually
Encourage the planting of trees and shrubs.	Promote and implement the trees and shrub sale. (LWCD)	Annually 5,000 trees/yr
Ensure the proper management and protection of woodlands.	Provide landowners with information regarding the Managed Forest Law and direct them to the DNR forester. (LWCD)	As needed
	Provide educational resources and DNR forester contacts to citizens requesting information on woodland issues, including invasive species. (LWCD)	As needed
Maintain the County farmland and the Potter's Field.	Coordinate maintenance of the County farmland and Potter's field in accordance with Historical Society guidelines. (LWCD/Parks)	Annually
Ensure that nonmetallic mines are reclaimed according to state standards.	Implement the rules requiring mines operators have reclamation plans that meet standards. (LWCD/Zoning)	Ongoing
	Inspect and certify proper restoration that adheres to planned reclamation standards. (LWCD)	24 site inspections/yr

Objectives	Activities (Responsible Agencies)	Time Frame, Anticipated Outcome
Support implementation of the Wildlife Damage Abatement and Claims Program.	Provide financial support to landowners from the USDA to prevent crop wildlife damage and to compensate for crop losses. (LWCD/USDA)	Quarterly
Implement the Deer & Turkey Donation Program.	Provide financial support from USDA to processors for deer & turkey donations to food pantries. (USDA/LWCD)	Annually
Statutes, Administrative Rules, Ordinances: NR 135 Nonmetallic Mining Reclamation, ch. 157.70 Burial Sites Preservation, HS 1 Burial Sites Preservation Board, HS 2 Burial Sites Preservation Program		
Approximate Costs: 1,895 hours of staff time per year		

Goal #4: Monitor and assess the state of the soil, water, and natural resources.

Objectives	Activities (Responsible Agencies)	Time Frame or Anticipated Outcome
Document the potential reduction in soil erosion on cropland.	Perform transect survey to collect information on cropland residue, tillage systems and calculate soil erosion by using tools such as SnapPlus. Convey the resulting information on maps, graphs or charts. (LWCD)	Annually in June
Document the location and trends of livestock in the county.	Perform livestock inventory and convey the resulting information on maps, graphs or charts. (LWCD)	Every 5 years (2025)
Track compliance with FPP and NR 151 rules.	Update and modify the FPP and NR 151 tracking database application. (LWCD)	2022
	Enter data and produce reports on compliance. (LWCD)	Annually
Determine progress in maintaining and improving the quality of lakes, rivers, and wetlands.	Perform monitoring and/or compile water quality, fish, invasive species, and habitat data. (LWCD/DNR)	Annually
	Recruit and train citizens to perform water quality monitoring and aquatic invasive species monitoring on lakes and rivers. (LWCD/RRC/DNR)	1-2 trainings/yr
	Use maps to display conservation projects and land	On going

Objectives	Activities (Responsible Agencies)	Time Frame or Anticipated Outcome
	preservation associated with lakes/rivers/wetlands. (LWCD)	
Statutes, Administrative Rules, Ordinances: NR 151 Runoff Management		
Approximate Costs: 1,825 hours of staff time per year		

Goal #5: Educate and inform the public regarding Jefferson County resources and LWCD services.

Objectives	Activities (Responsible Agencies)	Time Frame, Anticipated Outcome
Ensure that the public is informed about land and water resources and the services provided by LWCD.	Provide or facilitate educational talks to various groups. (LWCD)	2-6 talks/yr
	Provide information and education to the public via direct mail, press releases, and radio interviews. (LWCD)	As needed
	Create maps for customers depicting a variety of features and data. (LWCD)	Ongoing
	Update the LWCD website. (Administration/LWCD)	As needed
Support the development of a Producer-Led Council and partner with them to support soil health education.	Host workshops on soil health, regenerative agriculture, and cover crops. (LWCD/UWEX/Producer-Led Group/NRCS)	Ongoing
Approximate Costs: 510 hours of staff time per year		

Key to Responsible Agencies:

AFT - American Farmland Trust

DATCP - Department of Agriculture, Trade, and Consumer Protection

DNR - Department of Natural Resources

FSA - Farm Service Agency, U.S. Department of Agriculture

LIO - Jefferson County Land Information Office

LWCD - Jefferson County Land and Water Conservation Department

NRCS - Natural Resources Conservation Service, U.S.

Department of Agriculture

Parks - Jefferson County Parks Department

RRC - Rock River Coalition

USDA - U.S. Department of Agriculture

UW-EX - University of Wisconsin-Extension

Zoning - Jefferson County Zoning and Planning Department

Work Plan Implementation

The work plan will be implemented by the Land and Water Conservation Department. Components of the plan will be implemented in accordance to various state and local ordinances and regulations. Relevant rules, ordinances, and programs are included below.

The Animal Waste Storage and Nutrient Management Ordinance is used to ensure manure storage structures are designed, constructed, altered, and closed according to standards and to ensure nutrient management plans developed in conjunction with the ordinance meet necessary standards. Enforcement matters for the Animal Waste Storage ordinance are handled by the LWCD.

The LWCD will use state cost-sharing to help achieve the goals of the plan. Practices available for cost-sharing are listed in Appendix B.

The livestock siting portion of the Jefferson County Zoning Ordinance was passed in 2006. It consists of a state statute and rule that governs the siting of new and expanding livestock operations. The law details the standards that operators must meet to obtain permit approval. The LWCD reviews the required application, employee training plan, environmental incident response plan, and the 5 worksheets that cover: animal units, odor management, waste and nutrient management, waste storage facilities, and runoff management. The LWCD consults with the Zoning Department on matters of enforcement.

According to Chapter NR 135 of the Wisconsin Administrative Code, the Jefferson County Nonmetallic Mining Reclamation Ordinance and the Jefferson County Zoning Ordinance, nonmetallic mines must have a permit to extract materials and ensure subsequent reclamation of mined lands. The LWCD ensures that the reclamation plans meet standards. The LWCD also inspects mines annually to confirm that standards are met. The LWCD administers an annual certification fee, and has the ability to take enforcement action.

The shoreland provisions in the Jefferson County Zoning Ordinance are used to protect the water resources. The LWCD assists with information to citizens, site visits, review of permit applications as they relate to shoreland vegetation, and identification of violations. Enforcement matters for this ordinance are handled by the Zoning Department.

The Runoff Management Administrative Code (NR 151) for the State is used for implementation and enforcement of the Agricultural Performance Standards and Prohibitions. NR 151 sets performance standards and prohibitions for farms to prevent runoff and protect water quality. The DATCP rule (ATCP 50) identifies conservation practices that farms must follow to meet DNR standards. The agricultural performance standards and prohibitions are as follows:

- Sheet, rill and wind erosion: All cropped fields shall meet the tolerable (T) soil erosion rate established for that soil.
- Tillage setback: No tillage operations may be conducted within 5 feet of the top of the channel of surface waters.
- Phosphorus index: Croplands, pastures, and winter grazing areas shall average a phosphorus index of 6 or less over the accounting period and may not exceed a phosphorus index of 12 in any individual year within the accounting period.
- Manure storage facilities: All new, substantially altered, or abandoned manure storage facilities shall be constructed, maintained or abandoned in accordance with accepted standards. Failing and leaking existing facilities posing an imminent threat to public health or fish and aquatic life or violate groundwater standards shall be upgraded or replaced.
- Process wastewater handling: There may be no significant discharge of process wastewater to waters of the state.
- Clean water diversions: Runoff from agricultural buildings and fields shall be diverted away from contacting feedlots, manure storage areas and barnyards located within water quality management areas (300 feet from a stream or 1,000 feet from a lake or areas susceptible to groundwater contamination).
- Nutrient management: Agricultural operations applying nutrients to agricultural fields shall do so according to a nutrient management plan.
- Manure management prohibitions:
 - No overflow of manure storage facilities
 - No unconfined manure pile in a water quality management area
 - No direct runoff from a feedlot or stored manure into the waters of the state
 - No unlimited access by livestock to waters of the state in a location where high concentrations of animals prevent the maintenance of adequate sod or self-sustaining vegetative cover

A water quality management area (WQMA) is defined as:

- the area within 1,000 feet from the ordinary high water mark of navigable waters that consist of a lake, pond or flowage,
- the area within 300 feet from the ordinary high water mark of navigable waters that consist of a river or stream,
- a site that is susceptible to groundwater contamination, or that has the potential to be a direct conduit for contamination to reach groundwater.

The federal Clean Water Act requires states to identify impaired waters and develop and implement plans to reduce pollutants to those waters to meet water quality standards over time. The Rock River Recovery is the name of Rock River Basin Total Maximum Daily Load (TMDL) implementation process. The pollutants identified for reduction in the Rock River Recovery are sediment and phosphorus. The LWCD will work on implementation of TMDL-based pollutant reductions by working with DNR staff, developing nine-key element watershed

plans, and implementing Department of Agriculture cost-share funds that the office receives each year as well as with the available funds from the DNR's Multi-Discharger Phosphorus Variance (MDV) program. The MDV program enables point-source dischargers to receive a time extension on their phosphorus reduction goals by contributing funds (determined at a price per pound of phosphorus that they are over their permit levels) to Land and Water Conservation Departments in their watershed. The counties then can use these funds to pay for practices that will reduce phosphorus pollution. Additional funds for TMDL implementation may also be obtained by applying for DNR Targeted Runoff Management grants.

Wisconsin Administrative Code NR 216 Storm Water Discharge Permits requires that a notice of intent shall be filed with the DNR by any landowner who disturbs one or more acres of land. This disturbance can create a point source discharge of storm water from the construction site to waters of the state and is therefore regulated by DNR. Agriculture is exempt from this requirement for activities such as planting, growing, cultivating and harvesting of crops for human or livestock consumption and pasturing or yarding of livestock as well as sod farms and tree nurseries. Agriculture is not exempt from the requirement to submit a notice of intent for one or more acres of land disturbance for the construction of structures such as barns, manure storage facilities or barnyard runoff control systems. (See s. NR 216.42(2), Wis. Adm. Code.) Furthermore, construction of an agricultural building or facility must follow an erosion and sediment control plan consistent with s. NR 216.46, Wis. Adm. Code and must meet the performance standards of s. NR 151.11, Wis. Adm. Code. An agricultural building or facility is not required to meet the post-construction performance standards of NR 151.12, Wisconsin Administrative Code.

In addition to the rules and ordinances included above, the LWCD will consult with its partners to ensure water quality objectives and problems are identified. This will include consulting with various DNR personnel to specify water quality objectives for each water basin.

Farmland Preservation Program

State Statutes require the Land and Water Conservation Department conduct on-farm status reviews of all Farmland Preservation participants. Each participant must be reviewed once every four years to determine compliance with soil and water conservation standards.

Beginning in 2011, the Department divided the County into quadrants to streamline the Status Review process. The townships in each of the four quadrants are as follows:

- Quadrant 1 - Koshkonong, Oakland, Sumner, Jefferson
- Quadrant 2 - Lake Mills, Waterloo, Milford, Aztalan
- Quadrant 3 - Ixonia, Watertown, Farmington, Concord
- Quadrant 4 - Palmyra, Sullivan, Cold Spring, Hebron

With the possible exception of the minimum five foot setback from surface water, all Jefferson County Farmland Preservation participants are in full compliance with the soil and water conservation standards. Department Staff are working to educate producers that the setback needs to start at the top of the channel, not at the water's edge.

Nutrient management plan check lists are required for each participant by June 30th of each year. They are required to be on file prior to the landowner completing their Annual Certification of Compliance. Entire plans are not required to be turned in but must be produced upon request of the Department.

Information/Education Strategy

- The Annual Certification mailing goes out to participants on the last business day of the year. The mailing also contains the Department's annual newsletter.
- Each winter, Department staff holds a series of Nutrient Management Update Classes for farmers who write their own plan. These classes offer a chance for the plan writer to learn of new updates to the SnapPlus program and to review the planning process. Class registration is typically mailed out in late October and also contains a newsletter specifically dealing with farmer written plans.
- Post cards are sent out in late May of each year to inform participants of their upcoming on-farm Status Review.
- Post card reminders are mailed out in April to all participants who have not already completed their Annual Certification, and remind them of the late fee after May 1st.
- Post card reminders are sent out in late May to anyone who has not yet turned in a nutrient management plan checklist.
- July through October, on-farm status reviews are written up and mailed to participants. If any problems are found, the review is sent not only to the participant but to the operator (if applicable) as well. Those participants are put on a schedule of compliance to correct the issue.

Priority Farm Strategy

Determining and achieving compliance with the Agricultural Performance Standards is a large task. Therefore, the job will be done based on a priority strategy so that the most critical sites and areas are handled first.

All farms enrolled in the Farmland Preservation Program are in compliance with the Agricultural Performance Standards as of December 2018. If spot checks reveal any compliance issues, the LWCD works with these landowners to achieve compliance. Any landowners interested in joining the FPP are brought into compliance before they can be enrolled.

The remaining land that is not enrolled in the Farmland Preservation Program amounts to approximately 1/3 of the agricultural land in Jefferson County. The following is how this land will be prioritized by the Land and Water Conservation Department as it works toward full compliance with the Agricultural Performance Standards for all agricultural lands in Jefferson County:

1. Farms receiving a notice from the DNR requiring them to come into compliance with the Agricultural Performance Standards.
2. Farms that have significant problems with manure management identified by the LWCD or other cooperating agency.
3. Farms that have cropland erosion compliance issues in excess of tolerable soil loss as identified by the LWCD or a cooperating agency.
4. Farms located within a watershed with a nine key element plan (when developed).
5. Farms with land in water quality management areas that also have livestock.
6. Farms located in watersheds draining to “Impaired Waters” that are impaired due to sediment or nutrients. Because the watersheds of these impaired waters essentially cover the entire county, the only farms that will be included as “priorities” in these watersheds are defined as being within the WQMA of the impaired water.

Implementation Strategy for NR 151

Agricultural Nonpoint Performance Standards and Prohibitions

The Land and Water Conservation Department will implement the following strategy to ensure that farms are in compliance or attain compliance with the Agricultural Nonpoint Performance Standards and Prohibitions.

Information and Education Activities (related to Standards and Prohibitions)

In order to educate landowners about the Agricultural Performance Standards and Prohibitions, including applicable conservation practices and cost-sharing availability, the following will be implemented:

- Articles will be included in the LWCD newsletters.
- Information will be posted on the LWCD website.
- Education materials from DNR and DATCP will be provided to landowners, and made available at the LWCD office, cooperatives in the area, and other partners upon request.

Determining Compliance

Records Inventory

1. Continue to develop and maintain a database for a record of the parcels, fields, and facilities subject to standards and prohibitions.

2. Review available records of conservation programs to determine participants with contracts to install conservation practices. Note: All applicable privacy protection rules and laws will be followed.
3. Determine compliance status of parcels, fields, and facilities that are subject to standards and prohibitions for each landowner.

Onsite Evaluations

1. Determine and prepare a list of the lands that require onsite evaluations.
2. Contact landowners of lands that have no record of compliance and offer a site evaluation.
3. Conduct onsite evaluation for those willing to participate.
 - a. Determine and document the extent of current compliance with each of the NR 151 performance standards and prohibitions.
 - b. If lands are found to be non-compliant, determine practices needed, cost associated with practices, and eligibility for cost sharing.

Compliance Checklist When determining compliance, the LWCD staff will use a Compliance Checklist (Appendix A). The Checklist will be refined as necessary.

Landowner Compliance Notification

1. Prepare an NR 151 Land Owner Notification and send to landowners of evaluated lands. This notification will contain the following:
 - Current status of compliance with each of the performance standards and prohibitions.
 - If lands are non-compliant, identify options for corrective action.
 - Eligibility for cost-sharing.
 - Identification of funding sources and technical assistance including from federal, state, county, and third party service providers.
 - Conditions and technical standards that apply with cost-sharing.
 - Information about voluntary compliance and steps that will be taken if compliance is not voluntary.
 - Signature line indicating landowner agreement or disagreement with report findings.
2. Any Land Owners who refuse an onsite evaluation and have no records of compliance will be noted as such in the database and assumed to be non-compliant.
3. The compliance reports will be maintained in the LWCD office.

Voluntary Compliance Protocol

1. Receive request for cost-sharing and/or technical assistance from landowner.
2. Confirm cost-share eligibility and determine availability of technical assistance.
3. If State or County cost-share will be used, develop and issue cost-share contract.
4. If Federal cost-share will be used, initiate and assist with communication between agency staff and the landowner.

Non-Voluntary Compliance Protocol

If the landowner chooses not to install or implement corrective actions after an offer of cost-sharing is made, then LWCD will issue a Landowner Noncompliance according to NR 151.09(5-6) and/or 151.095(6-7).

Landowner Noncompliance letters will be drafted by the LWCD and DNR and will contain the following:

- A description of the performance standard or prohibition being addressed.
- The compliance status determination made in accordance with NR 151.
- The determination as to which best management practices or other corrective measures are needed and which, if any, are eligible for cost sharing.
- The determination that cost sharing is or has been made available, including a written offer of cost sharing when appropriate.
- An offer to provide or coordinate technical assistance.
- A compliance period for meeting the performance standard or prohibition.
- An explanation of the possible consequences if the owner or operator fails to comply with provisions of the notice.
- An explanation of state or local appeals procedures if required.

Implementation of Corrective Action and Cost-Sharing (see cost-share practices in Appendix B)

1. If cost sharing is involved, finalize and execute the cost-share agreement including a schedule for installing or implementing the best management practice(s).
2. Provide technical services and oversight:
 - Provide or review conservation plans.
 - Provide or review engineering designs.
 - Provide construction oversight.
 - Evaluate and certify installation of conservation practices.
3. After corrective measures are applied, conduct evaluation to determine if land is now in compliance with relevant performance standards and prohibitions.
 - If a site is compliant, update NR 151 Compliance Checklist and issue a NR 151 Land Owner Notification. A NR 151 Land Owner Notification serves as an official notification that the site has been determined to be in compliance with applicable performance standards and prohibitions. The issuance of a Letter NR 151 Land Owner Notification could be a joint effort with the DNR in order to give it the significance and standing that it merits.
 - If site is not compliant, seek non-regulatory remedies or initiate enforcement action.

Wisconsin DNR Enforcement with LWCD Partnership

The Land and Water Conservation Department plans to meet with staff from the DNR as necessary (approximately every two years) to determine and review enforcement

responsibilities and protocols for violations to the Agricultural Nonpoint Performance Standards and Prohibitions. DNR staff at the meeting will include applicable DNR personnel that could include Nonpoint Source Coordinators, Water Quality Biologist, Notice of Discharge Program Coordinator, Wastewater Engineer, Wastewater Specialist, Storm water staff, and Conservation Warden. The goal of the meeting(s) will be to develop a Memorandum of Understanding that spells out the protocols for enforcement and the responsibilities of each party. The document will cover the items below:

1. If a landowner does not fix the identified problem by the deadline, then prepare and issue Notice of NR 151 Violation letter, or other appropriate notice per local ordinance, pursuant to NR 151.09(5) or (6), or 151.095(6) or (7).
2. Schedule enforcement conference with DNR and the Land Owner
3. Participate in enforcement conference with DNR and the Land Owner
4. Determine the course of action with DNR for the site.
5. Initiate enforcement action

Compliance Monitoring

1. Conduct periodic evaluations to verify ongoing compliance.
2. Respond to public complaints alleging noncompliance.
3. Ensure new owners are made aware of (and have access to) NR 151 compliance information that may pertain to the property they have just acquired.

Annual Reporting

1. Maintain a record of annual site evaluations including their location and compliance status.
2. Maintain a record showing parcels where cost sharing has been applied to achieve compliance with standards and prohibitions, the amount and source of those funds, and the landowner share.
3. Maintain a record and location of lands receiving a NR 151 Land Owner Notification and Notice of Violation letters.
4. Share reports with DNR and DATCP.

Information and Education Strategy

Education is an integral part of the work of the Land and Water Conservation Department. Ongoing education efforts are implemented in concert with the Land and Water Resource Management Plan to ensure the success of the plan. Some education efforts are done in partnership with other entities including the University of Wisconsin Extension, other government entities, and agricultural and resource groups. The following is a list of typical educational actions that are taken to implement the work plan:

Personal Contacts with Landowners

Demonstration Projects

Workshops

Newsletters – LWCD Conservation Counts, FSA, various Extension newsletters

Press Releases to newspaper, local cable stations, radio stations

LWCD Website and Jefferson County Facebook page

Radio Interviews

Pamphlets and Brochures

The Land and Water Conservation Department and the Federal agriculture departments (FSA and NRCS) in Jefferson County are currently located in two separate locations. This sometimes leads to confusion and inconvenience for the landowners. As a way to be a “one-stop-shop” for the landowners, the LWCD and the federal departments have looked for opportunities to co-locate. In 2020, FSA and NRCS updated their lease and remodeled their offices. So, co-location will not occur in the near future. However, this language is being kept in the plan just in case it is an option in the future.

The LWCD will work with various staff of the University of Wisconsin Extension to plan educational programs/talks that relate to agriculture and the goals contained in this plan.

It is more important than ever (due to budgetary constraints) to have citizens contribute to monitoring of our water resources. In addition, the citizens that use the water resources often are the ones who are able to identify possible problems before they get too big to manage. To this end, the LWCD will train citizens to perform water quality monitoring, and invasive species monitoring.

Monitoring and Evaluation

Monitoring and evaluation is an integral component to the success of the Land and Water Plan and its goals. It will be an ongoing process that is implemented in a variety of ways. Throughout this process, necessary adjustments will be made to how actions in the work plan are implemented to ensure achievability of the goals.

Land and Water Resource Management Monitoring and Evaluation

Agricultural Performance Standards and Prohibitions – annually – track compliance status of farms

Conservation Practice Implementation – ongoing – map completed practices, tally the total practice units, estimate phosphorus and sediment reductions achieved using tools and models (such as SnapPlus), and include DNR staff, as appropriate, to assist with determining pollutant load reductions.

Farmland Preservation Program – annually - FPP participants in one quarter of the county are monitored annually (so the entire county is covered within 4 years) – determine if farms are following required conservation standards

Livestock Inventory – every 5 years – determine location, number of facilities, quantitative ranking, and trend analysis

Manure Complaint Investigations – ongoing – track complaints, identify problems, and track progress toward rectifying problems

Nonmetallic Mines – annually and as needed – track exposed and reclaimed acreage meeting approved plan standards

Nutrient Management Plans – annually – All of the farmer-written plans and a portion of the other plans submitted to LWCD are reviewed for adherence to all applicable standards. The total acreages and landowners with NMPs are tracked.

Transect Survey – annually – estimates soil loss, tracks residue levels and cropping system trends

Water Quality Monitoring in Lakes and Streams – annually and as available – track water quality conditions through monitoring data

Aquatic Plant Surveys – as available – track changes to plant communities, including aquatic invasive species

NOTE: The County's Geographic Information System is an important tool in the monitoring and evaluation process. Much of the information we collect (transect survey, livestock inventory, FPP participation, Nutrient Management Plans, etc.) is entered onto the system. A wide variety of maps can be produced at different scales that will assist in conservation planning and land and water resource protection.

Administrative Monitoring and Evaluation

All Office Programs – annually – review and refine administration of programs, evaluate available financial and staff resources and make necessary adjustments

Cost-Share Programs– annually – review and update ranking system to allocate money to the most critical resource concerns first, regularly review and make necessary changes to implementation procedures, track amount of funds used in implementation of practices
Federal and County Cooperation – quarterly meetings between LWCD, FSA, and NRCS department heads to discuss coordination of activities and programs, twice-a-year meetings with all staff from LWCD, FSA, and NRCS to discuss coordination of activities
Financial Audit – annual audit of grant revenues and expenditures by a 3rd party
LWCD Staff meetings – monthly meetings to discuss coordination of activities and programs

Partners in Management

Many different entities are involved in the management of Jefferson County's land and water resources and the LWCD is dedicated to expanding and diversifying its partnerships. Though each entity has its own mission, jurisdiction, and priorities, they all work towards the goal of protecting and enhancing land and water resources. This section lists a sampling of these governmental and private organizations.

Federal Government

United States Department of Agriculture

Farm Service Agency (FSA) and Natural Resources Conservation Service (NRCS)

FSA is the financial agency responsible for administering the Federal Farm Bill. They manage programs such as Conservation Reserve and Conservation Reserve Enhancement Program, price supports, production controls, and conservation cost sharing.

NRCS is responsible for the soil survey development and updates. They provide technical assistance to local land users and administer programs such as the Environmental Quality Incentives Program, Wildlife Habitat Incentives Program, and the Wetland Reserve...

Army Corps of Engineers (Corps)

The Corps is the federal agency responsible for issuing permits to allow alteration of wetlands.

U.S. Fish and Wildlife Service (F&WS)

Federal agency that has a grant program that supports projects that protect, restore, or enhance wetland and associated upland migratory bird habitats.

State Government

Department of Natural Resources (DNR)

The state agency responsible for managing state-owned lands and protecting public waters. DNR administers programs to regulate, guide, and assist with managing land, water quality, fish, and wildlife. DNR works to assess waterways and has programs to reduce nonpoint and point source pollutants to restore impaired waters via TMDLs and/or nine-key element watershed plans.

Department of Agriculture, Trade, and Consumer Protection (DATCP)

The state agency responsible for establishing and administering statewide soil and water conservation policies and programs. DATCP administers state cost-sharing funds for a variety of LWCD operations, including support of staff, materials, and conservation practices.

University of Wisconsin – Extension (UW-EX)

The outreach of the University of Wisconsin system responsible for formal and informal educational programs throughout the state.

County Government

Farm Drainage Committee

The Jefferson County committee that oversees the legal drainage districts throughout the County.

Land and Water Conservation Department

The Jefferson County Land and Water Conservation Department is responsible for the implementation of land and water conservation practices to achieve greater environmental stewardship of the land.

Land Information Office

The Jefferson County Land Information Office compiles and maintains real estate rolls and maps for property assessment and taxation.

Parks Department

The Jefferson County Parks Department is responsible for maintaining and improving the park facilities within the park system, as well as expanding the system as the demand for additional recreational facilities increases.

Zoning and Sanitation Department

The Jefferson County Zoning and Sanitation Department advises applicants about required permits and approvals, issues permits, makes inspections, and takes enforcement actions under the Jefferson County Zoning, Land Division/Subdivision, Floodplain, and Sanitation Ordinances.

Town Organizations

Jefferson County Towns Association

Agricultural Organizations

Jefferson County Farm Bureau

Lake, River and Wetland Organizations

Blue Spring Lake Management District
Golden Lake Association
Johnson Creek Watershed Alliance
Joint Rock Lake Committee
Lake Ripley Management District
Lower Spring Lake Protection and Rehabilitation District

Mauneshia River Alliance
Rock Koshkonong Lake District
Rock Lake Improvement Association
Rock River Coalition
Rock River Rescue Foundation
Rome Lake Improvement Association
Lake Koshkonong Wetland Association

APPENDIX A

Jefferson County Land and Water Conservation Department

NR 151 Compliance Checklist

Landowner:	Parcel Numbers:
-------------------	------------------------

Conservation Compliance Standard (Shaded boxes indicate non-compliance)	Yes	No
Sheet, Rill, Gully, and Wind Erosion		
Cropland soil erosion meets tolerable soil loss and all concentrated flow channels are addressed.		
Nutrient Management		
Is there a nutrient management plan on all cropland that meets the NRCS 590 Standard?		
All Manure Storage Facilities Must Be Complaint With The Following		
If the manure storage facility was constructed after 10/2002 it must meet NRCS Standards.		
If an existing storage structure has been substantially altered it must meet NRCS Standards.		
If a manure storage structure has not had manure added or removed for a period of 24 months it must be properly abandoned.		
If a manure storage structure poses an imminent threat to public health, fish and aquatic life, or is causing a violation of groundwater standards it must be abandoned.		
Clean Water Diversion		
Has runoff been diverted from contacting feedlot manure storage areas and barnyard areas within water quality management area (WQMA)?		
Manure Management Prohibitions		
Is there any overflow of manure storage structures?		
Are there any unconfined manure stacks in a WQMA?		
Is there direct runoff from a feedlot or stored manure into waters of the state?		
Is there unlimited access by livestock to waters of the state in where high concentrations of animals prevent the maintenance of adequate sod or self-sustaining vegetative cover?		
New Conservation Compliance Standards *December 31, 2018 Compliance Deadline*		
Are there adequate tillage setbacks (minimum of 5 feet) from top of channel of surface water?		
Are pastures included in NMP?		
Is there significant discharge of processed wastewater to waters of the State?		

Notes:

Final Compliance Status

☐

Compliance

☐

Non-Compliance

Completed By LWCD Staff:

Date:

This report contains details of the status review that was conducted on your farm for the Wisconsin Statue NR 151. If you have questions on this status review, please contact the Jefferson County Land and Water Conservation Department at (920) 674-7110.

Definitions

Adequate Sod or Self-sustaining Vegetative Cover: The maintenance of sufficient vegetation so that the physical integrity of a stream bank or lakeshore is preserved. Self-sustaining vegetative cover includes grasses, forbs, and sedges.

Direct Runoff: A discharge of a significant amount of pollutants to waters of the state resulting from any of the following:

1. Runoff from a manure facility
2. Runoff from an animal lot that can be predicted to reach surface water of the state through a defined or channelized flow path or a man-made conveyance
3. Discharge of leachate from a manure pile
4. Seepage from a manure storage facility
5. Construction of a manure storage facility in permeable soils or over fractured bedrock without a liner designed in accordance with NR 154.04 (3)

NRCS Standards for Manure Storage: Refers to NRCS 313 Standard for construction of manure storage facilities.

Unconfined Manure Stack: A quantity of manure that is at least 175 cubic feet in volume which covers the ground surface to a depth of at least 2 inches and is not confined within a manure storage facility. For example, a typical 140 bushel manure spreader contains about 175 cubic feet of manure.

Water Quality Management Area (WQMA): The area within 1,000 feet from the ordinary high water mark of navigable waters of a lake pond or flowage; the area within 300 feet from the ordinary high water mark of navigable waters of a river or stream; a site that is susceptible to groundwater contamination or that has the potential to be a direct conduit for contamination to reach groundwater. A site susceptible to groundwater contamination means the following:

1. An area within 250 feet of a private well
2. An area within 100 feet of a municipal well
3. An area within 300 feet upslope or 100 feet down slope of karst features
4. A channel with a cross-sectional area equal to or greater than 3 square feet that flows to a karst feature
5. An area where the soil depth to groundwater or bedrock is less than 2 feet
6. An area where the soil above groundwater or bedrock does not exhibit one of the following:
 - At least a 2 foot soil layer with 40% fines or greater
 - At least a 3 foot soil layer with 20% fines or greater
 - At least a 5 foot soil layer with 10% fines or greater

Waters of the State: All lakes, bays, rivers, streams, springs, ponds, wells, impounding reservoirs, marshes, water courses, drainage systems or other surface water or ground water, natural or artificial, public or private within the state or under its jurisdiction except those waters that are entirely confined and retained completely upon the property of a person.

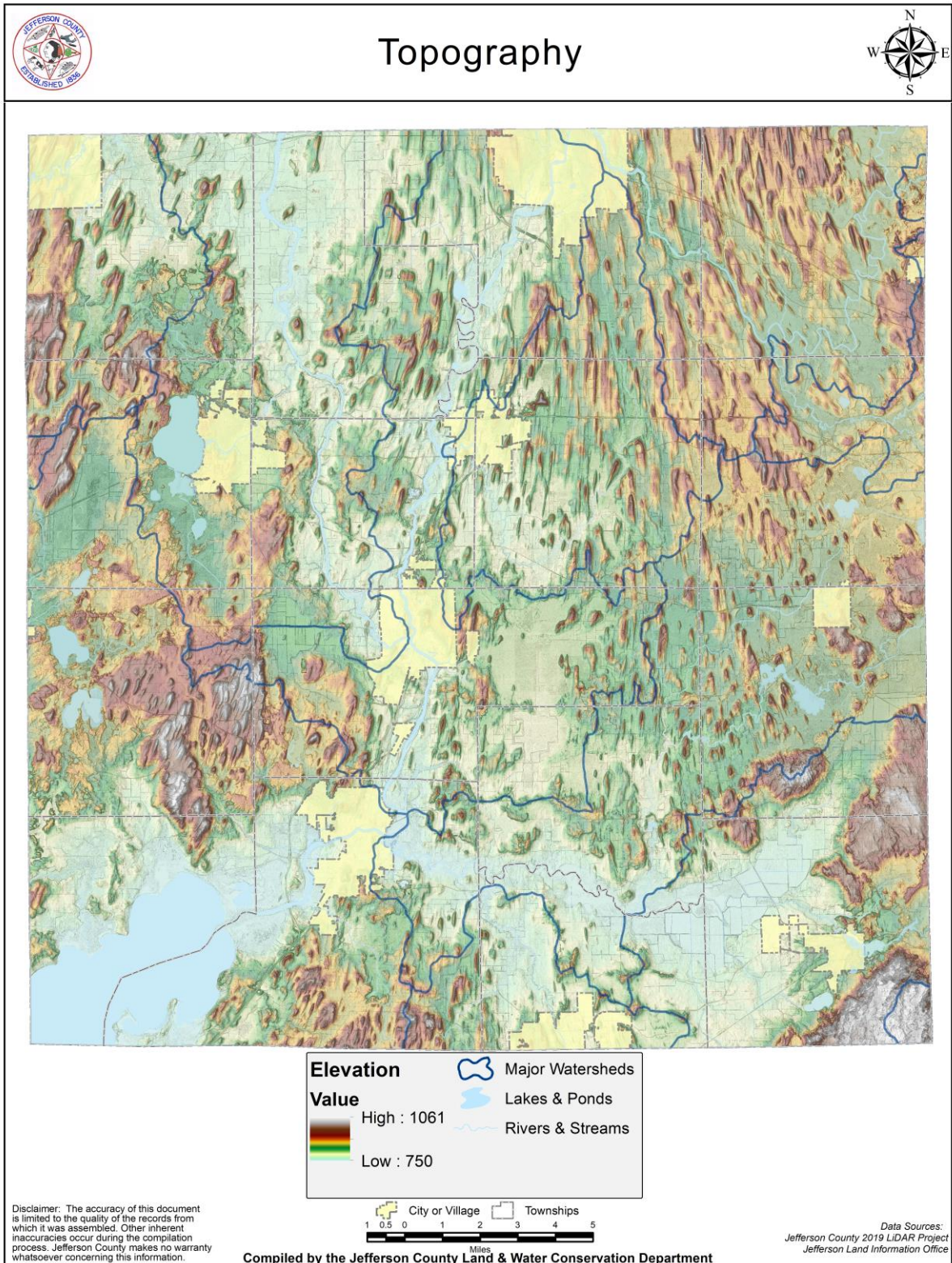
APPENDIX B

Cost-Share Practices

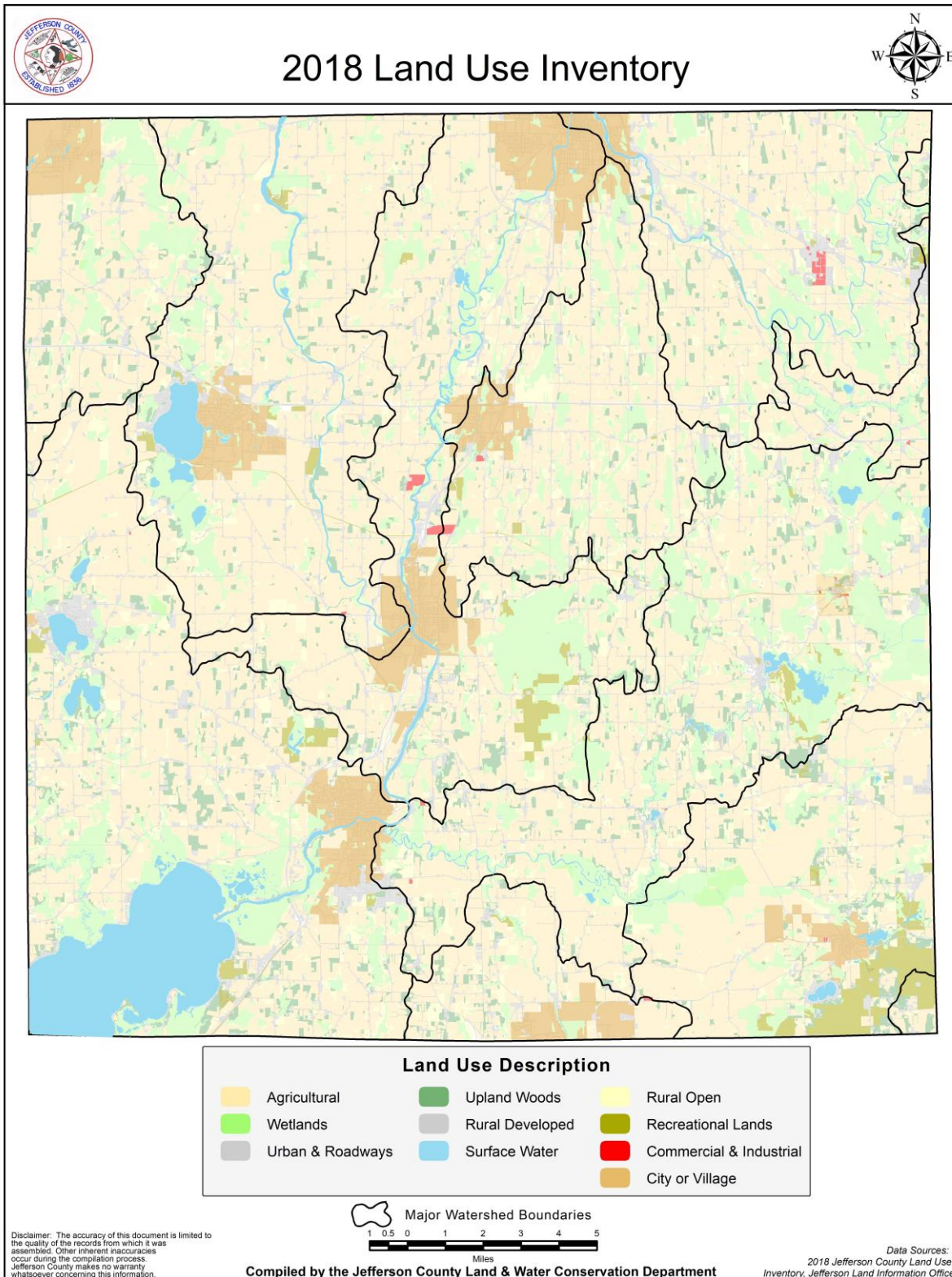
Land taken out of agricultural production
Riparian land taken out of agricultural production
Manure storage systems
Manure storage closure
Barnyard runoff control systems
Access road
Trails and walkways
Contour farming
Cover and green manure crop
Critical area stabilization
Diversions
Field windbreaks
Filter strips
Feed storage runoff control systems
Grade stabilization structures
Livestock fencing
Livestock water facilities
Milking center waste control systems
Nutrient management for cropland or pasture
Pesticide management plans (management plans & structures)
Prescribed grazing (management plan, permanent & non-permanent fencing, establish permanent pasture with seeding)
Relocating or abandoning animal feeding operations
Residue management
Riparian buffers (installation, and mowing and maintenance beyond initial 10 year period)
Roofs
Roof runoff systems
Sediment basins
Sinkhole treatment
Stream bank and shoreline protection
Stream crossing
Strip-cropping
Subsurface drains
Terrace systems
Underground outlet
Waste transfer systems
Water and sediment control basins
Waterway systems
Well decommissioning
Wetland restoration
Engineering services in connection with completed cost-share practices which uses bond revenue
Other practices with DATCP's written approval

MAPS

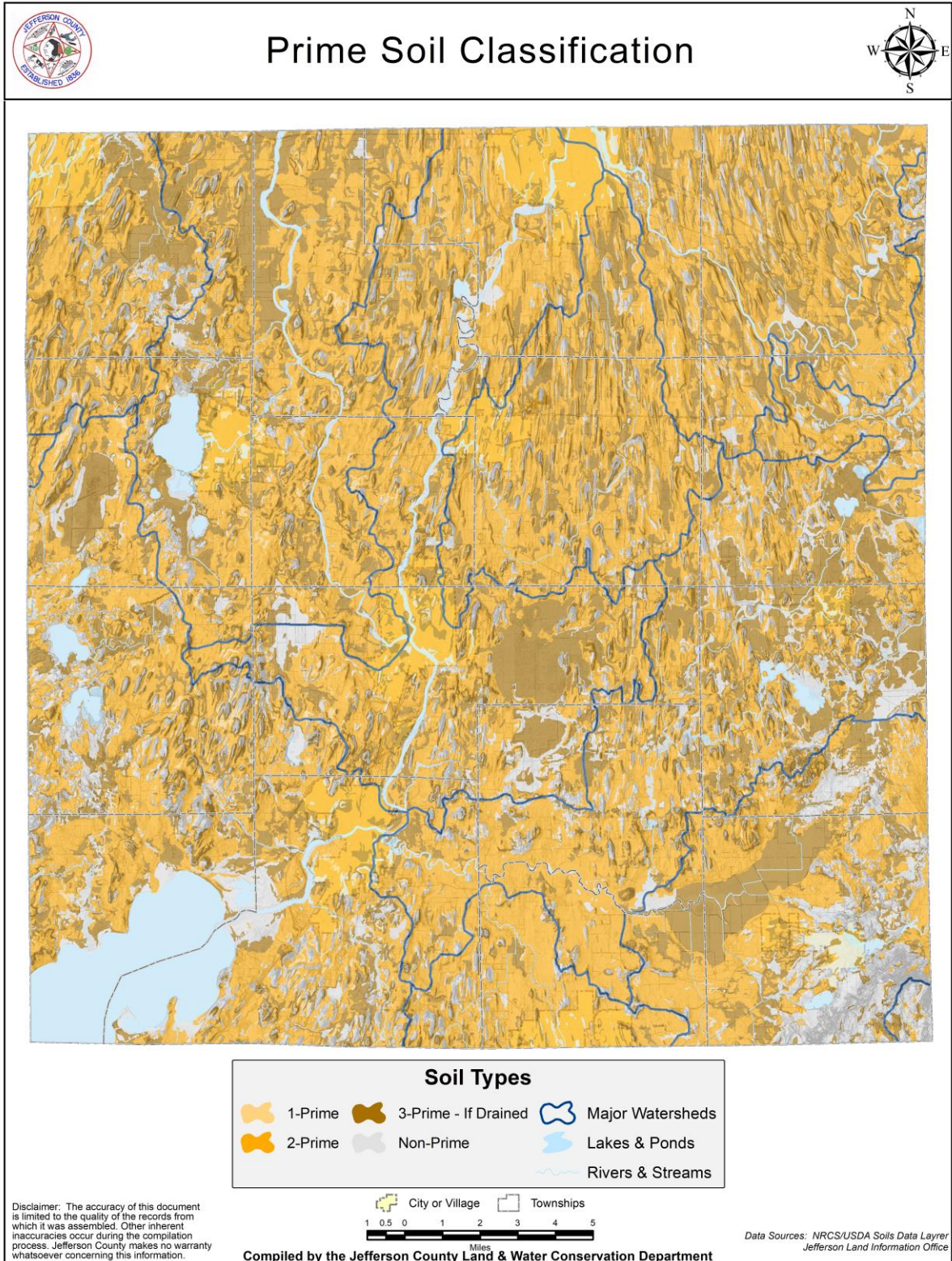
Map 1



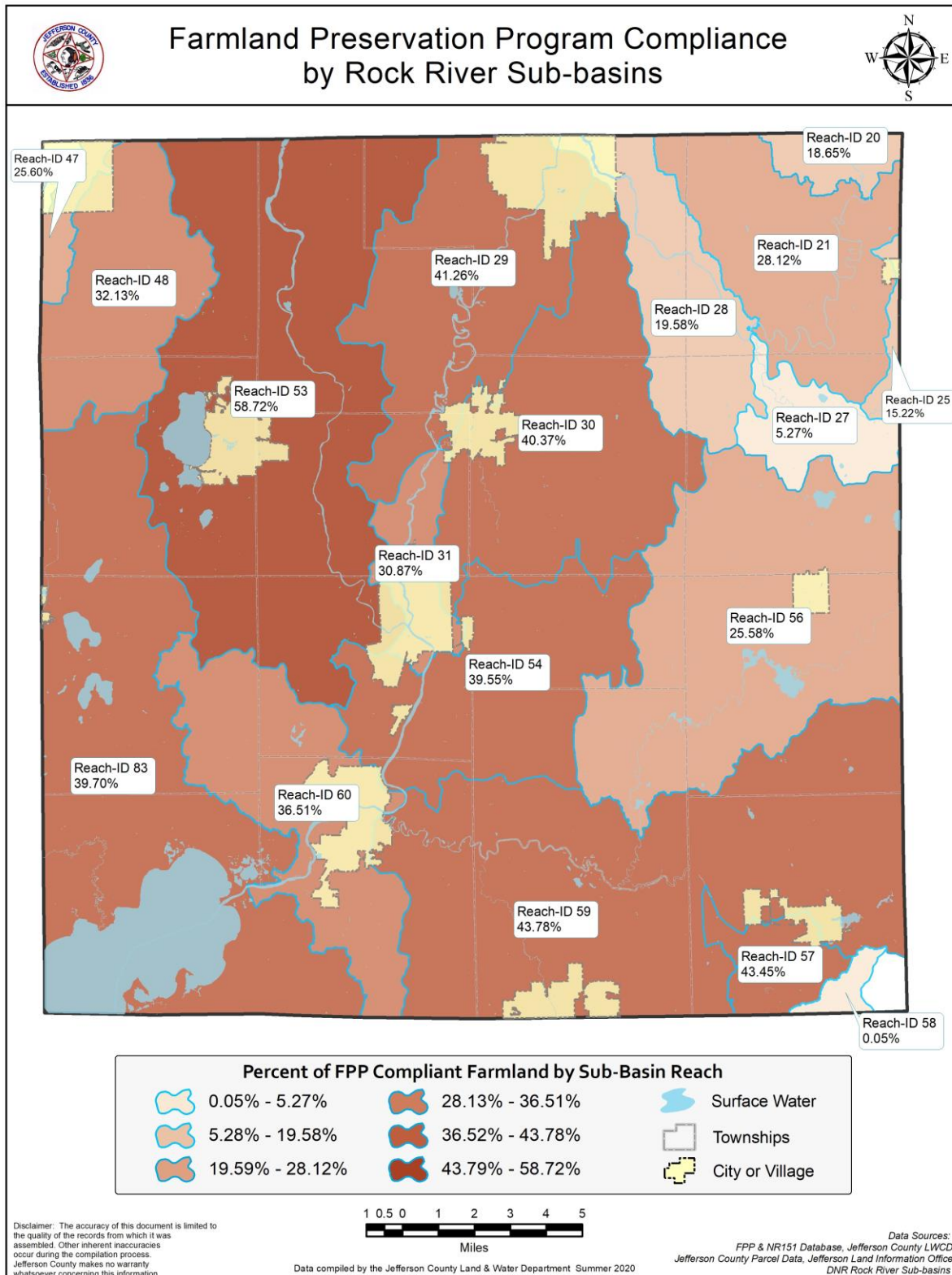
Map 2



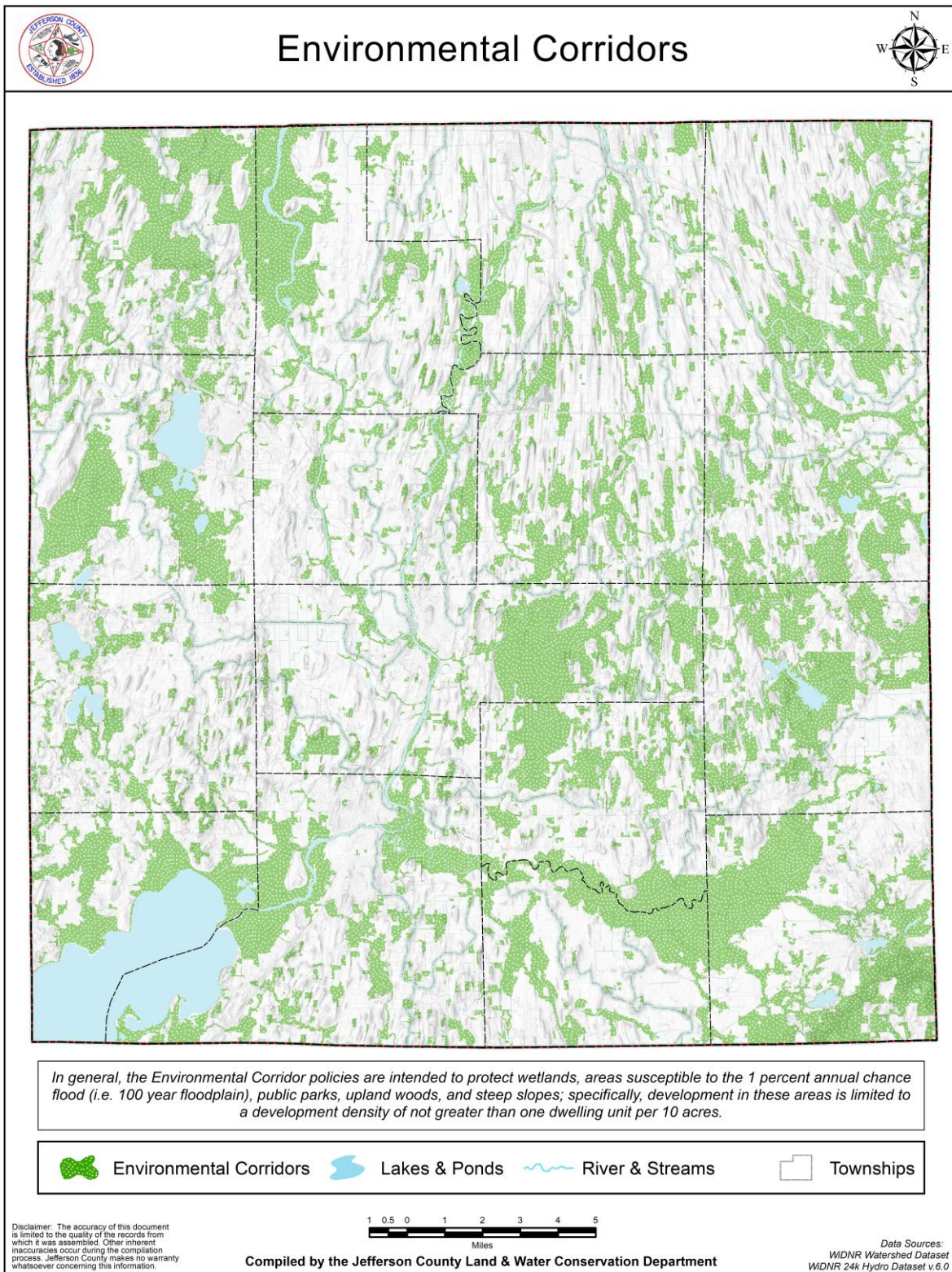
Map 3



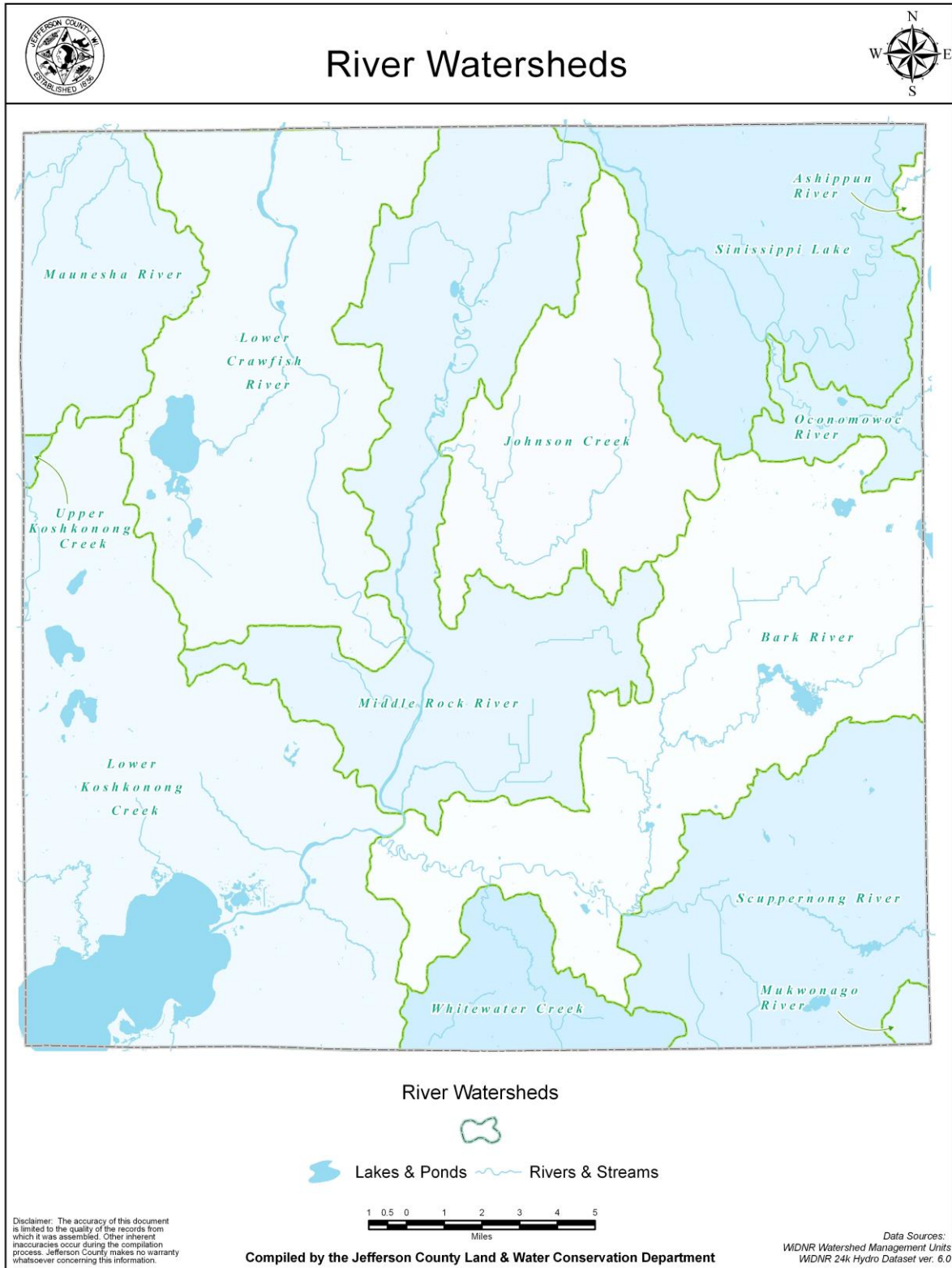
Map 4



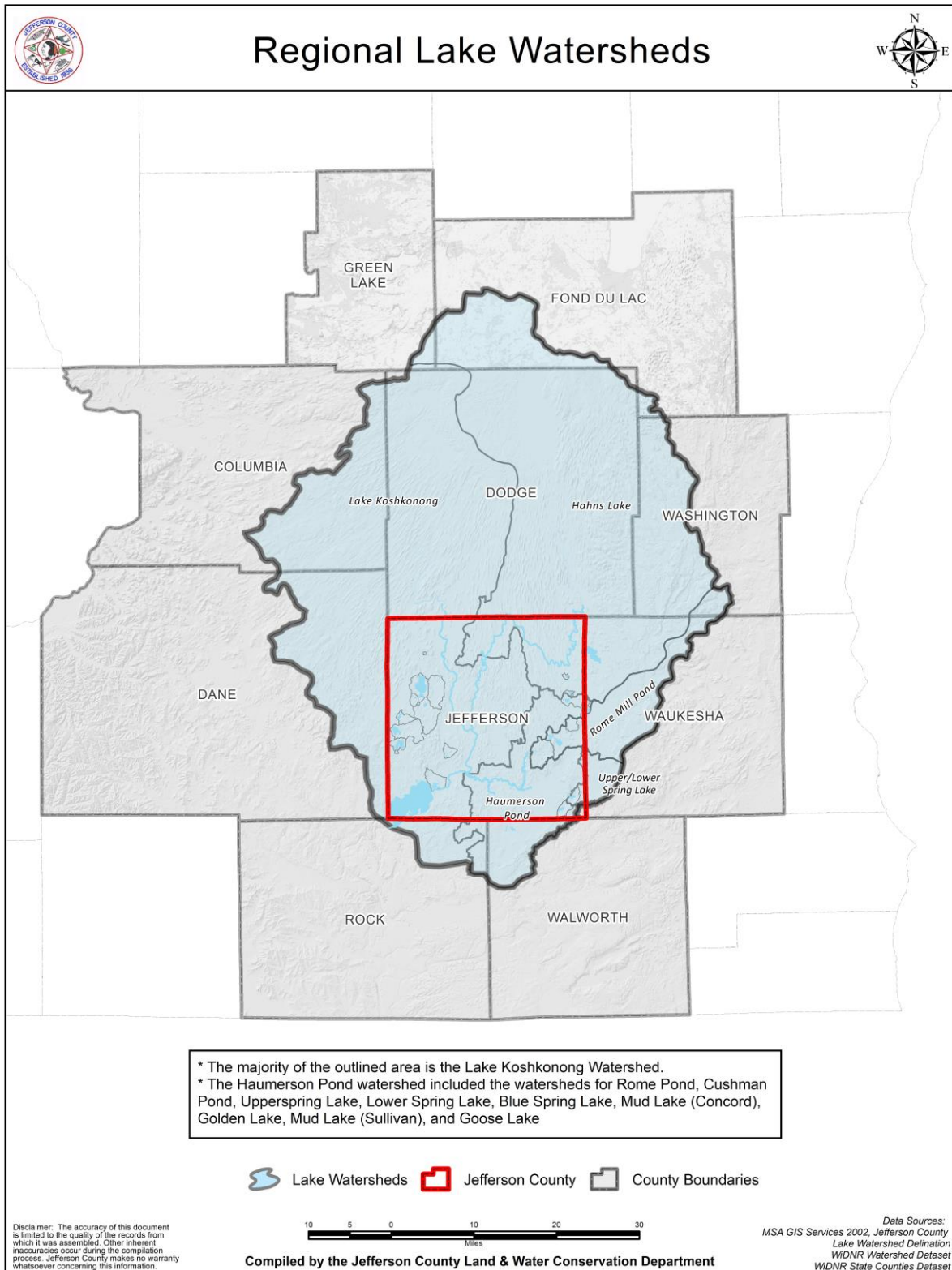
Map 5



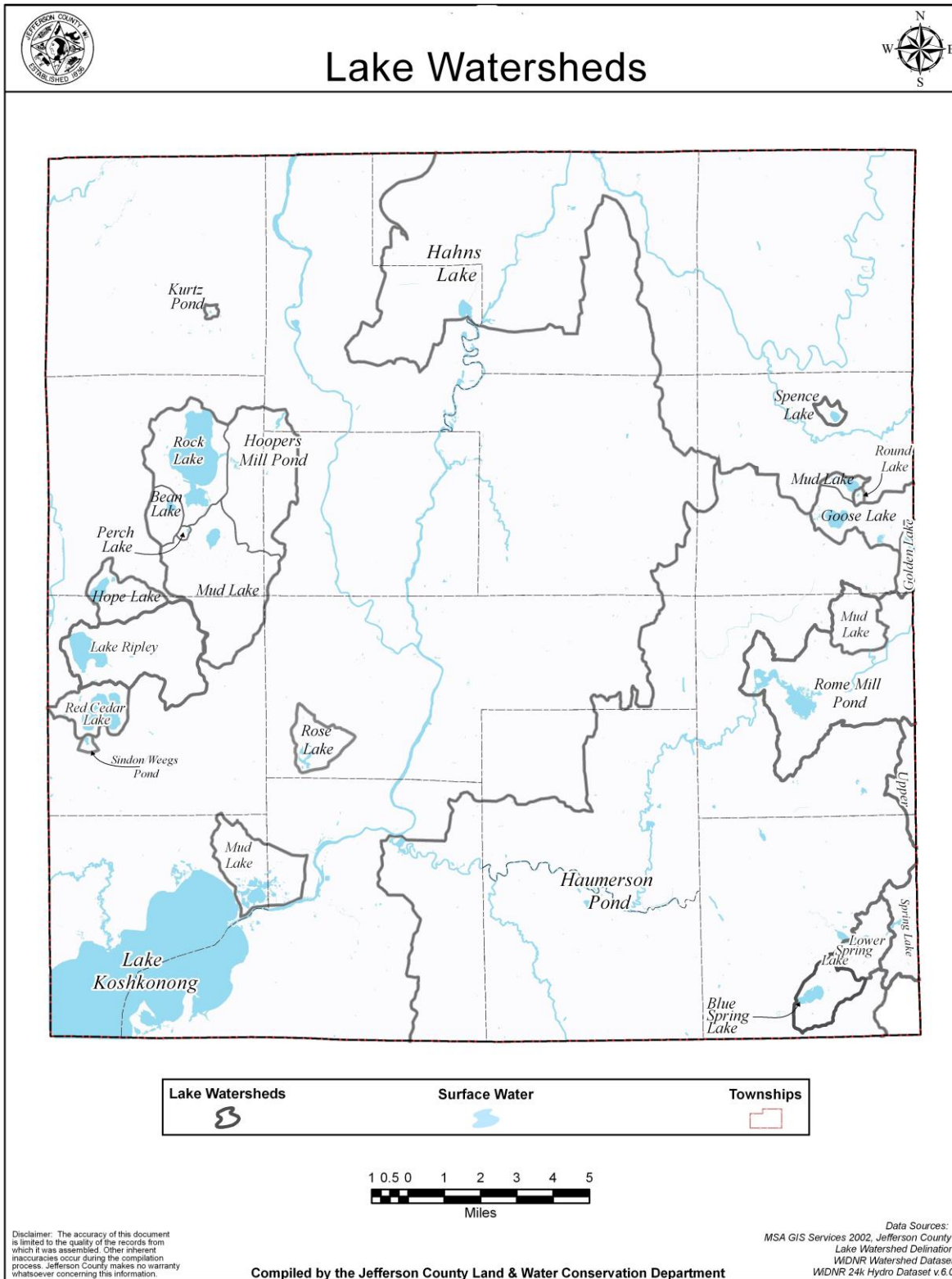
Map 6



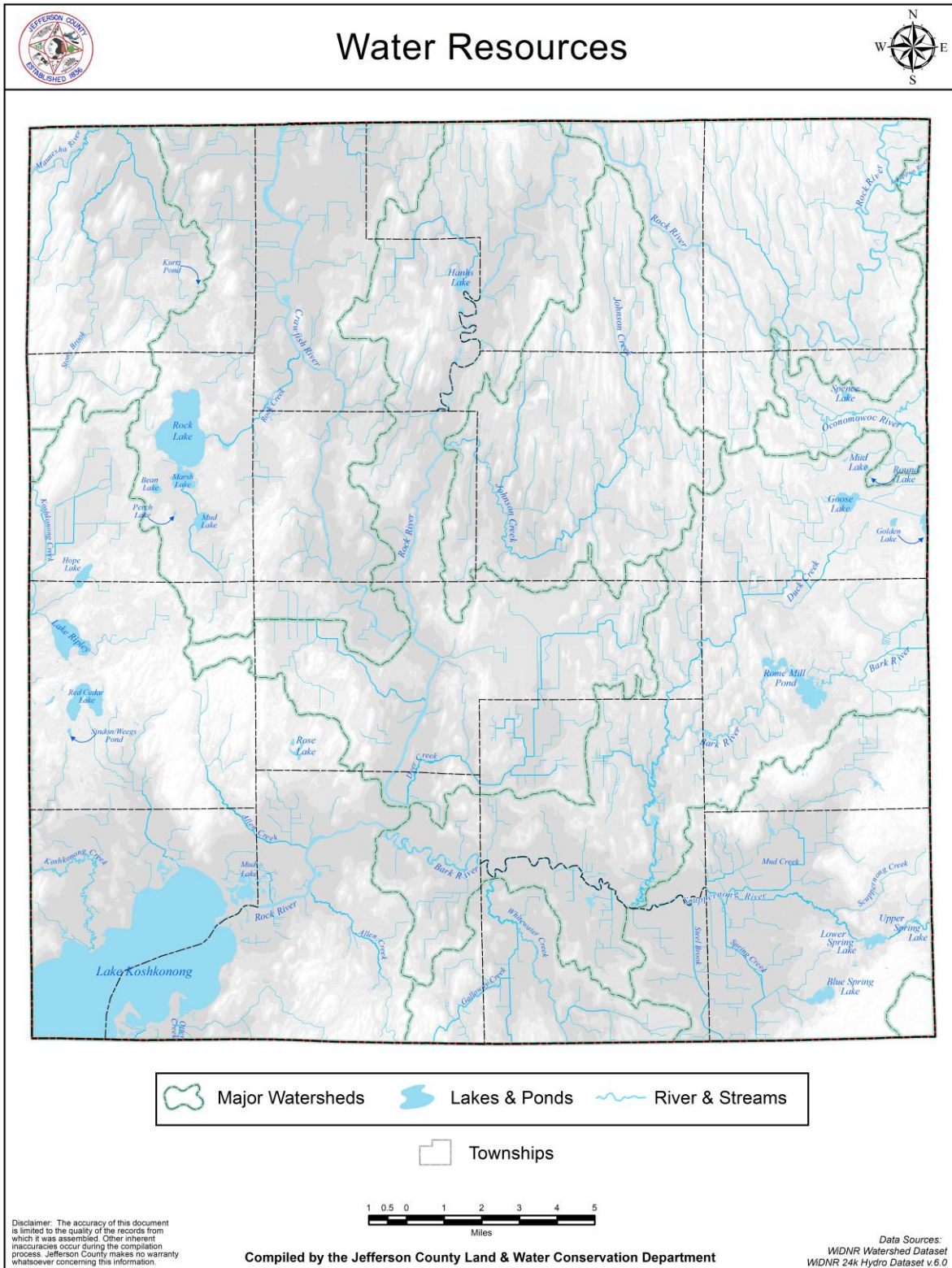
Map 7



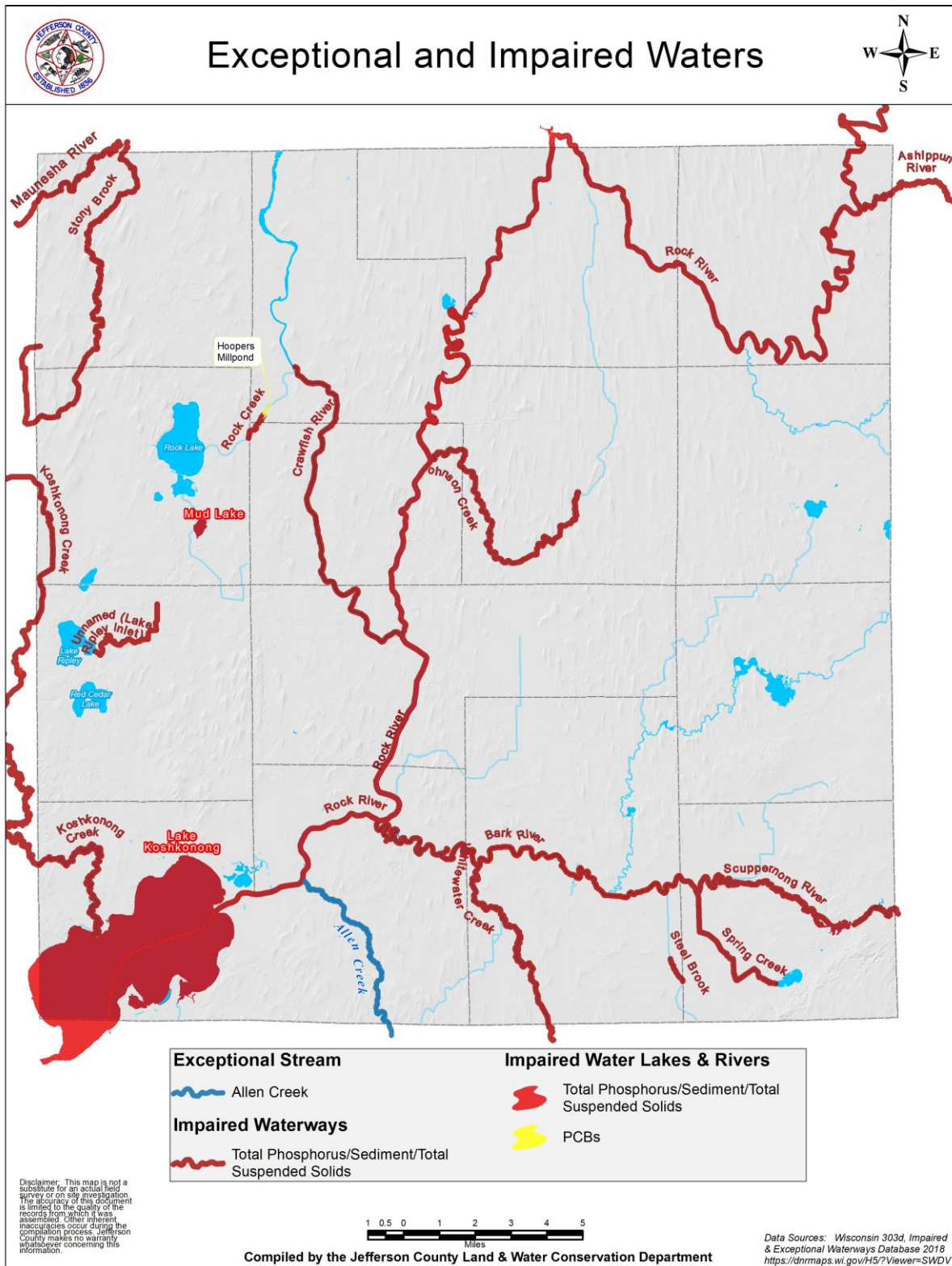
Map 8



Map 9



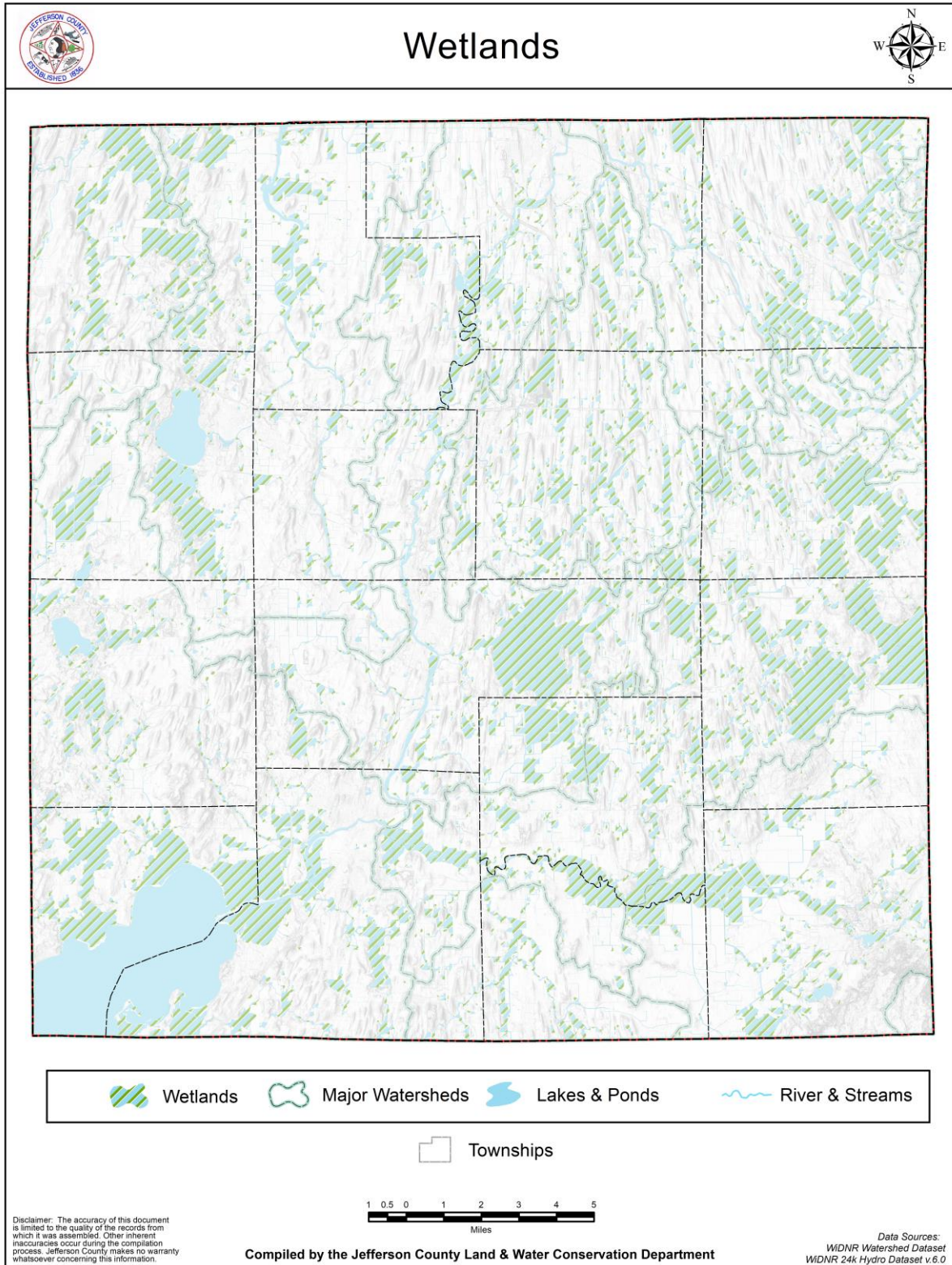
Map 10



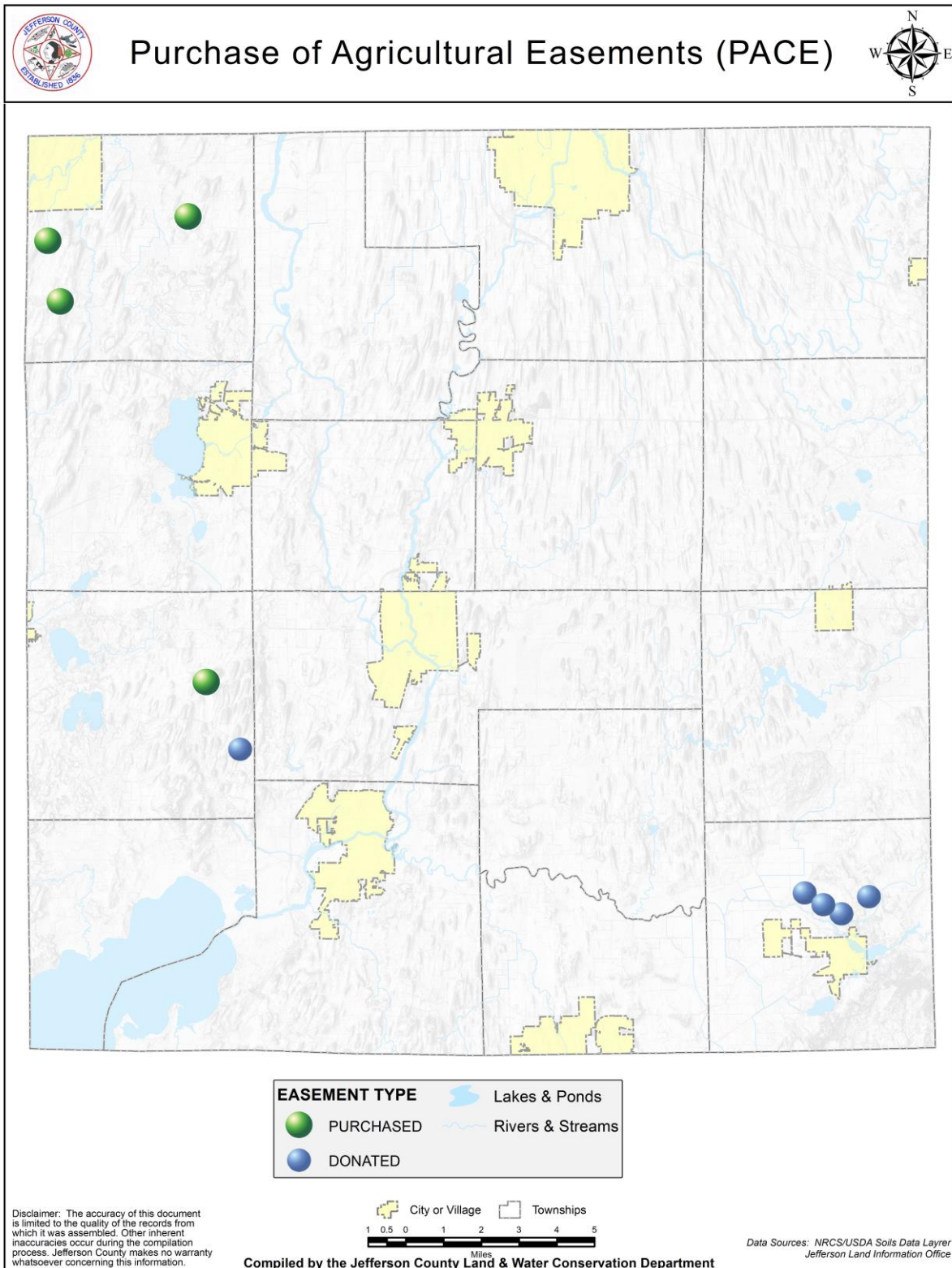
Map 11



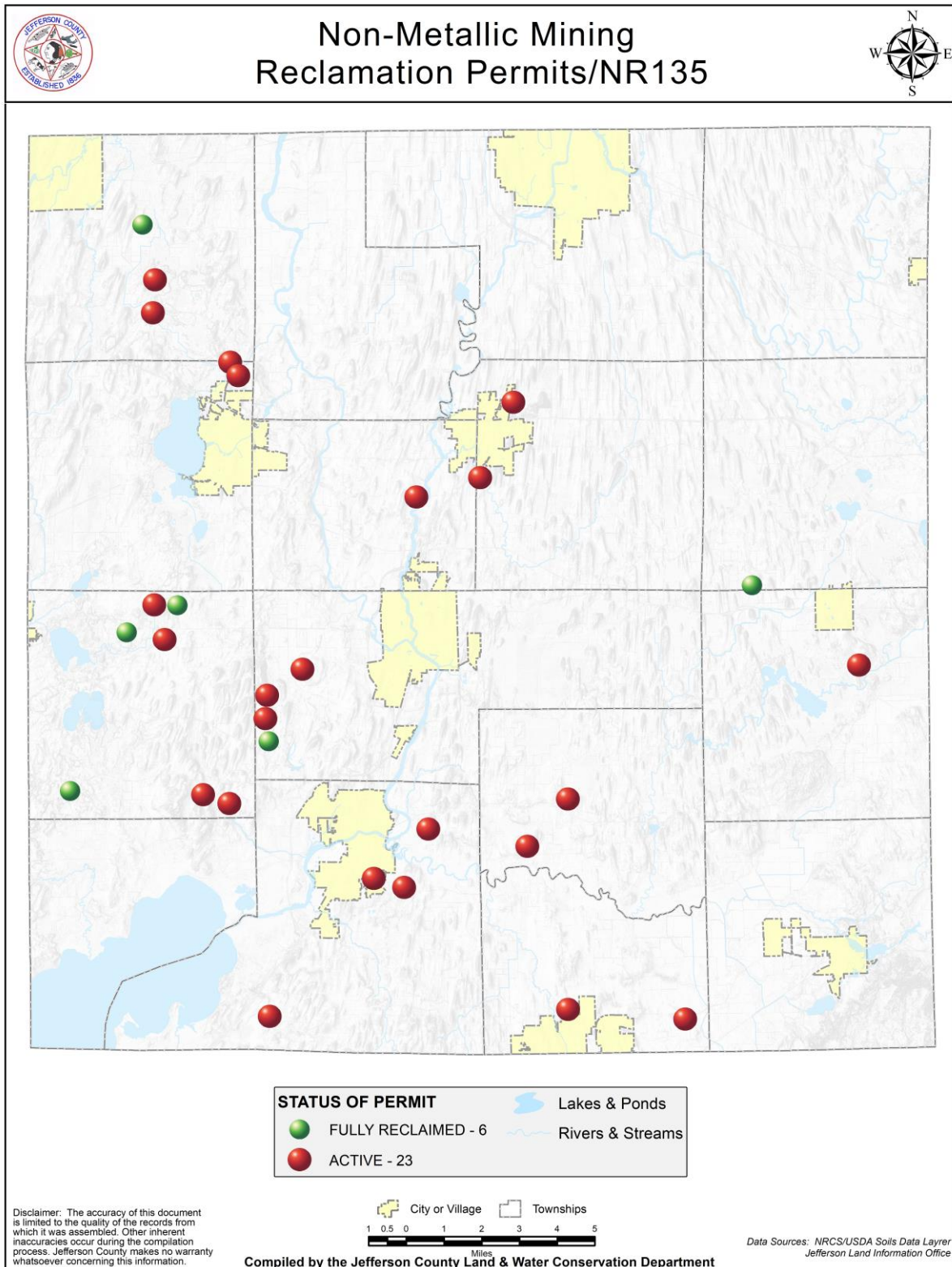
Map 12



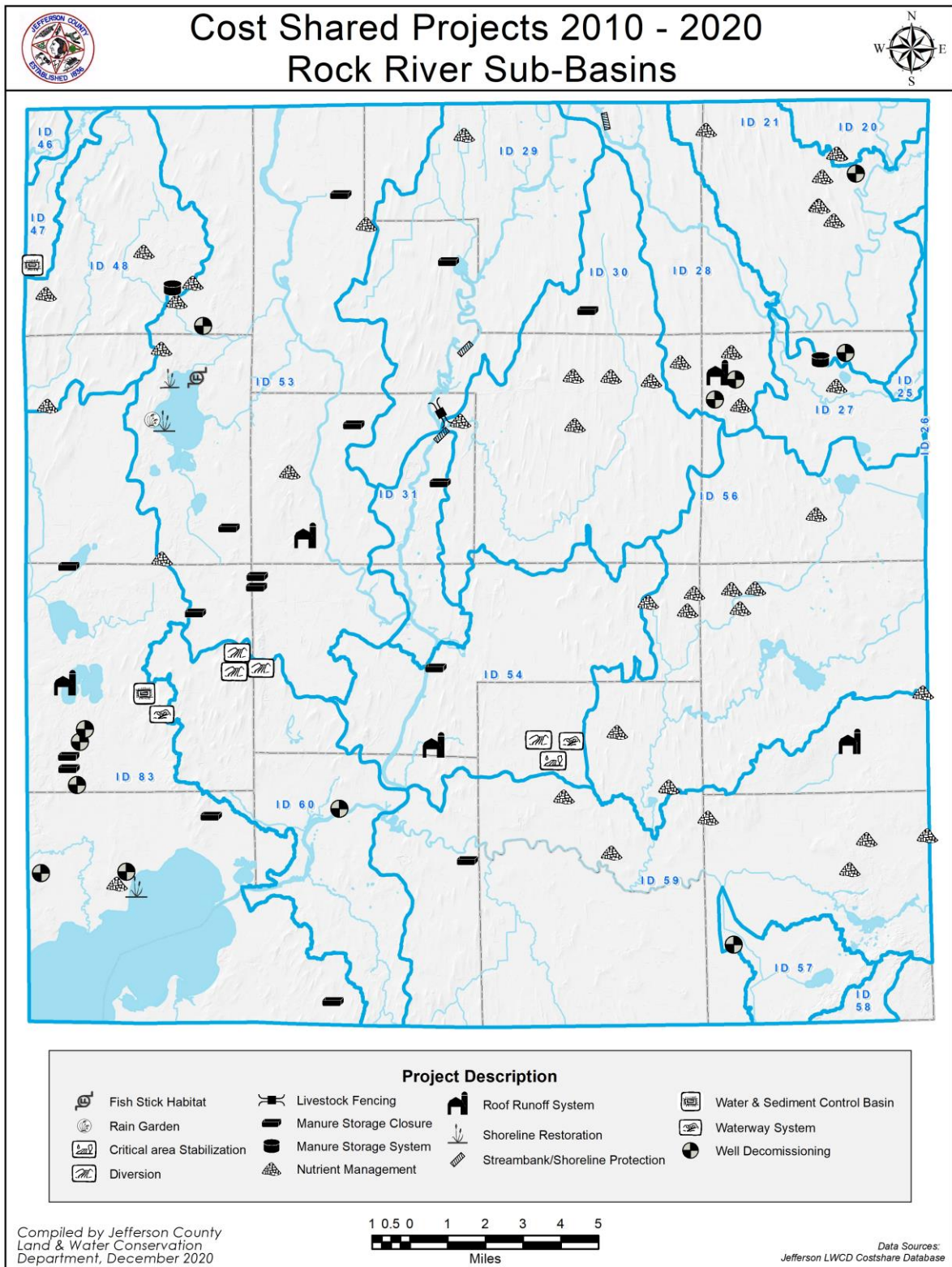
Map 13



Map 14



Map 15



Land and Water Conservation Department and Committee Authority, Duties, and Personnel

Authority

The history of the Land and Water Conservation Department (LWCD) dates back to December 18, 1946 when the Jefferson County Board of Supervisors first created what was then called the Soil and Water Conservation District. The LWCD is supervised by the Land and Water Conservation Committee (LWCC) which was established by County Board Resolution No. 82-34 on June 8, 1982. Subsequent to changes in Chapter 92 of the Wisconsin Statutes which eliminated the District, County Board Resolution 82-73 adopted in October of 1982 further defined powers and procedures to be followed by the LWCC.

The Rules of Order for the Jefferson County Board of Supervisors details the following for the Land and Water Conservation Committee:

- Seven members appointed by the County Board Chair consisting of not less than three County Board Supervisors, including at least two members of the University Extension Education Committee. The Chair of the Farm Service Agency (or his/her designee) shall serve on the Land and Water Conservation Committee.
- The Land and Water Conservation Committee shall have the powers as set forth in Chapter 92, Wisconsin Statutes, and provide policy oversight to the Land and Water Conservation Department.
- This Committee shall also be responsible for acquiring conservation easements, reviewing applications to grant such easements and recommending action thereon to the County Board when appropriate.
- This Committee shall also manage, supervise and be responsible for County farmland not held for future parks development. Leases of the farmland shall be approved by the County Board.

LWCD Duties

The purpose of the LWCD is to provide for the conservation of the soil and water resources of the Jefferson County. The department has been charged with administering State Statutes and County ordinances all leading to the conservation and protection of our natural resources. The work of the LWCD is detailed in the Land and Water Resources Management Plan – a plan required by the Wisconsin Department of Agriculture, Trade and Consumer Protection in order to be eligible for both staffing funds as well as funds to cost-share the construction of conservation practices.

Various programs and activities, as identified in the Land and Water Resources Management Plan, are undertaken in conjunction with cooperating agencies in order to carry out the purpose of the LWCD and fulfill a multitude of local, state and federal mandates.

Programs and activities implemented include: Farmland Preservation Program, implementation of the Agricultural Performance Standards, Conservation Reserve Enhancement Program, Animal Waste and Nutrient Management Ordinance, Livestock Siting law, state conservation cost-share program, Non-metallic Mining, tree seedling sale, Agricultural Conservation Easement Program, aquatic invasive species prevention and management, Jefferson County farm management, nutrient management plan classes, water quality monitoring, water resource planning and protection projects, soil erosion and animal waste pollution investigations, land and water conservation education and outreach, land and water resources information and technical assistance, and Wildlife Damage Abatement and Claims Program.

Personnel

The LWCD has the following full time staff: Director/County Conservationist, 2 Resource Conservationists, Water Resources Management Specialist, and Administrative Assistant.

Patricia Cicero

Director

920-674-7121; partriciac@jeffersoncountywi.gov

Joshua Butteris

Resource Conservationist

920-674-7115; jbutteris@jeffersoncountywi.gov

Kim Liakopoulus

Administrative Specialist

920-674-7110; kiml@jeffersoncountywi.gov

Joe Strupp

Resource Conservationist

920-674-7483; joes@jeffersoncountywi.gov

Marisa Ulman

Water Resources Management Specialist

920-674-7111, marisau@jeffersoncountywi.gov

LCC MEMBER RESOURCES

As a Land Conservation Committee (LCC) member, you are a key player in the natural resource protection arena. You provide vital input into the task of identifying resource needs and developing programs and policies to address those needs. It is important for LCC members to be knowledgeable about the work and workings of the Land and Water Conservation Department (LWCD). This knowledge can be put to good use both in your committee and in your contacts with the public. These resources will help you learn about your role as an LCC member and about conservation in Wisconsin.

MEMBERS HUB

Visit the WI Land+Water Members Hub to explore the LCC Member Resources page. Here you'll find the materials mentioned below, along with other helpful information.

Visit the LCC Member Resources page: wisconsinlandwater.org/members-hub/lcc-resources

LCC HANDBOOK

The LCC Handbook has been developed by WI Land+Water to assist you in understanding your leadership role as an LCC member.

Read the handbook: wisconsinlandwater.org/members-hub/lcc-resources

LCC TRAINING VIDEO SERIES

Browse our selection of on-demand trainings curated specifically for LCC members. Most videos are less than 10 minutes.

- » What is Chapter 92? (9:03)
- » Learn about WI Land+Water (6:08)
- » How to Get Involved with WI Land+Water (6:08)
- » Advice from Fellow LCC Members (11:19)
- » Advice from County Conservationists (10:12)
- » Intro to the State Land and Water Conservation Board (10:19)
- » DATCP – Nutrient Management Program Introduction (2:32)
- » DATCP – Land and Water Resource Management Plans Training Webinar (6:16)
- » DATCP – Soil and Water Resource Management Grants (6:05)
- » DNR – Wisconsin Nonpoint Source Pollution Abatement Program (10:27)

Watch these videos and browse more on-demand trainings:
wisconsinlandwater.org/members-hub/lcc-resources

05/03/2022
09:10:11

Jefferson County
FLEXIBLE PERIOD REPORT

PAGE 1
glflxrpt

FROM 2022 01 TO 2022 03

ACCOUNTS FOR:		ORIGINAL	TRANFRS/	REVISED			AVAILABLE	PCT
100 General Fund		APPROP	ADJSTMTS	BUDGET	ACTUALS	ENCUMBRANCES	BUDGET	USED
12401 Land Conservation								
12401	411100 General Property Taxes	-370,797	0	-370,797	-92,699.13	.00	-278,097.42	25.0%
12401	421001 State Aid	-196,197	0	-196,197	-11,703.02	.00	-184,493.98	6.0%
12401	432099 Other Permits	-150	0	-150	.00	.00	-150.00	.0%
12401	451010 Sale Of Maps & Plat Books	-50	0	-50	.00	.00	-50.00	.0%
12401	451020 Other Fees	-310	0	-310	-120.00	.00	-190.00	38.7%
12401	451421 Crep Cancellation Fee	-250	0	-250	-334.87	.00	84.87	133.9%
12401	458001 Tree Sales	-8,400	0	-8,400	-2,605.00	.00	-5,795.00	31.0%
12401	458005 Ag & Hortic Supply Revenue	-50	0	-50	.00	.00	-50.00	.0%
12401	458009 Livestock Siting App Review F	-1,500	0	-1,500	.00	.00	-1,500.00	.0%
12401	458013 Farmland Cert Fee	-16,500	0	-16,500	-8,225.00	.00	-8,275.00	49.8%
12401	511110 Salary-Permanent Regular	87,050	0	87,050	21,479.07	.00	65,570.96	24.7%
12401	511210 Wages-Regular	328,238	0	328,238	75,018.69	.00	253,219.74	22.9%
12401	511330 Wages-Longevity Pay	949	0	949	.00	.00	948.75	.0%
12401	512141 Social Security	30,961	0	30,961	7,008.27	.00	23,952.83	22.6%
12401	512142 Retirement (Employer)	27,055	0	27,055	6,272.36	.00	20,783.07	23.2%
12401	512144 Health Insurance	59,767	0	59,767	15,909.97	.00	43,857.11	26.6%
12401	512145 Life Insurance	100	0	100	10.13	.00	90.19	10.1%
12401	512151 HSA Contribution	5,000	0	5,000	2,500.00	.00	2,500.00	50.0%
12401	512173 Dental Insurance	4,860	0	4,860	1,344.27	.00	3,515.73	27.7%
12401	531100 Permits Purchased	31	0	31	30.75	.00	.25	99.2%
12401	531301 Office Equipment	100	0	100	.00	.00	100.00	.0%
12401	531303 Computer Equipmt & Software	1,300	0	1,300	.00	.00	1,300.00	.0%
12401	531311 Postage & Box Rent	1,250	0	1,250	87.65	.00	1,162.35	7.0%
12401	531312 Office Supplies	600	0	600	29.60	.00	570.40	4.9%
12401	531313 Printing & Duplicating	400	0	400	116.16	.00	283.84	29.0%
12401	531314 Small Items Of Equipment	1,100	0	1,100	24.99	.00	1,075.01	2.3%
12401	531324 Membership Dues	1,845	0	1,845	1,845.00	.00	.00	100.0%
12401	531341 Agricultural & Hortic Suppli	5,100	0	5,100	.00	.00	5,100.00	.0%
12401	531348 Educational Supplies	50	0	50	.00	.00	50.00	.0%
12401	531351 Gas/Diesel	1,300	0	1,300	69.21	.00	1,230.79	5.3%
12401	532325 Registration	1,600	0	1,600	636.00	.00	964.00	39.8%
12401	532332 Mileage	20	0	20	.00	.00	20.00	.0%
12401	532335 Meals	150	0	150	14.99	.00	135.01	10.0%
12401	532336 Lodging	800	0	800	.00	.00	800.00	.0%
12401	533225 Telephone & Fax	300	0	300	32.58	.00	267.42	10.9%
12401	533236 Wireless Internet	1,100	0	1,100	248.70	.00	851.30	22.6%
12401	535242 Maintain Machinery & Equip	1,800	0	1,800	64.12	.00	1,735.88	3.6%
12401	535259 Tree Planter Service	50	0	50	.00	.00	50.00	.0%

05/03/2022
09:10:12

Jefferson County
FLEXIBLE PERIOD REPORT

PAGE 2
glflxprt

FROM 2022 01 TO 2022 03

ACCOUNTS FOR:		ORIGINAL	TRANFRS/	REVISED			AVAILABLE	PCT
100 General Fund		APPROP	ADJSTMTS	BUDGET	ACTUALS	ENCUMBRANCES	BUDGET	USED
12401	535349 Other Supplies	80	0	80	52.94	.00	27.06	66.2%
12401	571004 IP Telephony Allocation	824	0	824	206.01	.00	617.99	25.0%
12401	571005 Duplicating Allocation	165	0	165	41.25	.00	123.75	25.0%
12401	571009 MIS PC Group Allocation	20,000	0	20,000	5,000.01	.00	14,999.99	25.0%
12401	571010 MIS Systems Grp Alloc(ISIS)	4,448	0	4,448	1,112.01	.00	3,335.99	25.0%
12401	571020 Fleet Allocation	952	0	952	.00	.00	952.00	.0%
12401	591519 Other Insurance	4,857	0	4,857	1,216.59	.00	3,640.82	25.0%
12402 wildlife Crop Damage								
12402	421001 State Aid	-20,000	0	-20,000	-2,838.42	.00	-17,161.58	14.2%
12402	529299 Purchase Care & Services	20,000	0	20,000	3,808.42	.00	16,191.58	19.0%
12404 Local Cost Share Program								
12404	421001 24403 State Aid	-11,000	0	-11,000	.00	.00	-11,000.00	.0%
12404	472337 24404 Municipal Grant Revenue	-39,500	0	-39,500	-67,359.79	.00	27,859.79	170.5%
12404	529299 24403 Purchase Care & Service	11,000	0	11,000	.00	.00	11,000.00	.0%
12404	529299 24404 Purchase Care & Service	39,500	24,154	63,654	.00	.00	63,653.72	.0%
12404	699700 24404 Resv Applied Operating	0	-24,154	-24,154	.00	.00	-24,153.72	.0%
12405 DATCP Cost Share								
12405	421001 24405 State Aid	0	-18,522	-18,522	.00	.00	-18,522.00	.0%
12405	421003 State Aid GPR	-12,000	0	-12,000	.00	.00	-12,000.00	.0%
12405	421004 State Aid Bonded	-35,000	0	-35,000	.00	.00	-35,000.00	.0%
12405	485200 24405 Donations Restricted	0	-3,000	-3,000	-1,000.00	.00	-2,000.00	33.3%
12405	529299 24405 Purchase Care & Service	0	21,522	21,522	.00	.00	21,522.00	.0%
12405	593701 Cost Share Payment	47,000	0	47,000	.00	.00	47,000.00	.0%
12406 Non-Metallic Mining								
12406	411100 General Property Taxes	12,800	0	12,800	3,200.01	.00	9,599.99	25.0%
12406	432004 Non-Metallic Permit Fee	-900	0	-900	.00	.00	-900.00	.0%
12406	432005 Non-Metallic Annual Fee	-10,500	0	-10,500	.00	.00	-10,500.00	.0%
12406	474175 Highway Billed	-2,000	0	-2,000	.00	.00	-2,000.00	.0%
12406	531311 Postage & Box Rent	50	0	50	20.02	.00	29.98	40.0%
12406	531312 Office Supplies	50	0	50	.00	.00	50.00	.0%

05/03/2022
09:10:13

Jefferson County
FLEXIBLE PERIOD REPORT

PAGE 3
glflxrpt

FROM 2022 01 TO 2022 03

ACCOUNTS FOR:	ORIGINAL	TRANFRS/	REVISED	ACTUALS	ENCUMBRANCES	AVAILABLE	PCT
100 General Fund	APPROP	ADJSTMTS	BUDGET			BUDGET	USED
12406 531348 Educational Supplies	25	0	25	.00	.00	25.00	.0%
12406 531351 Gas/Diesel	50	0	50	.00	.00	50.00	.0%
12406 532325 Registration	100	0	100	.00	.00	100.00	.0%
12406 532335 Meals	25	0	25	.00	.00	25.00	.0%
12406 532336 Lodging	300	0	300	.00	.00	300.00	.0%
12407 Farmland Easement							
12407 424001 Federal Grants	-80,000	0	-80,000	.00	.00	-80,000.00	.0%
12407 481001 Interest & Dividends	-3,000	0	-3,000	-47.31	.00	-2,952.69	1.6%
12407 531311 Postage & Box Rent	25	0	25	.00	.00	25.00	.0%
12407 531312 Office Supplies	25	0	25	.00	.00	25.00	.0%
12407 531313 Printing & Duplicating	20	0	20	.00	.00	20.00	.0%
12407 594816 Capital Conserve Easement	120,000	0	120,000	.00	.00	120,000.00	.0%
12407 594960 Capital Reserve	98,687	-4,989	93,697	.00	.00	93,697.49	.0%
12407 699800 Resv Applied Capital	-135,757	4,989	-130,767	.00	.00	-130,767.49	.0%
12408 County Farm							
12408 411100 General Property Taxes	95,740	0	95,740	23,934.96	.00	71,804.92	25.0%
12408 482003 County Farm Land Rent	-100,427	0	-100,427	-50,213.25	.00	-50,213.75	50.0%
12408 529170 Grounds Keeping Charges	2,687	0	2,687	22.70	.00	2,664.42	.8%
12408 535249 Sundry Repair	2,000	0	2,000	.00	.00	2,000.00	.0%
12409 Farm Drainage Board							
12409 411100 General Property Taxes	-10,000	0	-10,000	-2,499.99	.00	-7,500.01	25.0%
12409 514151 Per Diem	4,000	0	4,000	605.00	.00	3,395.00	15.1%
12409 521212 Legal	3,000	0	3,000	.00	.00	3,000.00	.0%
12409 531312 Office Supplies	250	0	250	.00	.00	250.00	.0%
12409 531313 Printing & Duplicating	130	0	130	.00	.00	130.00	.0%
12409 531324 Membership Dues	100	0	100	.00	.00	100.00	.0%
12409 531349 Other Operating Expenses	250	0	250	.00	.00	250.00	.0%
12409 532325 Registration	900	0	900	20.00	.00	880.00	2.2%
12409 532332 Mileage	100	0	100	129.04	.00	-29.04	129.0%
12409 591513 Drainage Board Insurance	1,270	0	1,270	1,385.00	.00	-115.00	109.1%

05/03/2022
09:10:13

Jefferson County
FLEXIBLE PERIOD REPORT

PAGE 4
glflxrpt

FROM 2022 01 TO 2022 03

	ORIGINAL APPROP	TRANFRS/ ADJSTMTS	REVISED BUDGET	ACTUALS	ENCUMBRANCES	AVAILABLE BUDGET	PCT USED
GRAND TOTAL	0	0	0	-66,149.31	.00	66,149.31	.0%

05/03/2022
09:10:13

Jefferson County
FLEXIBLE PERIOD REPORT

PAGE 5
glflxrpt

REPORT OPTIONS

	Field #	Total	Page Break	
Sequence 1	1	N	Y	From Yr/Per: 2022/ 1
Sequence 2	9	N	N	To Yr/Per: 2022/ 3
Sequence 3	0	N	N	Budget Year: 2022
Sequence 4	0	N	N	Print totals only: N
				Format type: 1
				Double space: N
Report title:				Suppress zero bal accts: Y
				Amounts/totals exceed 999 million dollars: N
FLEXIBLE PERIOD REPORT				Roll projects to object: N
				Print journal detail: N
Includes accounts exceeding 0% of budget.				From Yr/Per: 2019/ 1
Print Full or Short description: F				To Yr/Per: 2019/ 1
Print full GL account: N				Include budget entries: Y
Sort by full GL account: N				Incl encumb/liq entries: Y
Print Revenues-Version headings: N				Sort by JE # or PO #: J
Print revenue as credit: Y				Detail format option: 1
Print revenue budgets as zero: N				Multiyear view: D
				Budget From Yr/Per: /
				To Yr/Per: /
Include biennium-to-date actuals/encumbrances: N				